



3975 LANDMARK STREET
CULVER CITY, CA 90232



leewestla.com A DIVISION OF  LEE & ASSOCIATES®

No warranty or representation is made to the accuracy of the foregoing information. Terms of sale or lease are subject to change or withdrawal without notice.



**3975 LANDMARK STREET
CULVER CITY, CA 90232**

PREMISES | Unit 3 ±1,909 SF

RENT | \$3.45/ SF FSG

OCCUPANCY | 30 Days

PARKING | 6 Spaces at \$150.00/space

TERM | Sublease through 2/28/19

FEATURES |

- Functional Office Space
- Walk to the Expo Line
- Walk to the new Platform Development in Minutes
- Lobby
- Kitchen
- Conference Room

CONTACT | **Douglas Marshall, SIOR**
310.899.2745
dmarshall@leewestla.com
BRE 00869275

Ian Ameche
310.899.2748
iameche@leewestla.com
BRE 01976053



1508 17th Street, Santa Monica, CA
310.899.2700

WWW.LEEWESTLA.COM | BRE 01222000



Douglas Marshall, SIOR

310.899.2745

dmarshall@leewestla.com

BRE 00869275

Ian Ameche

310.899.2748

iameche@leewestla.com

BRE 01976053



A DIVISION OF



FLOOR PLAN

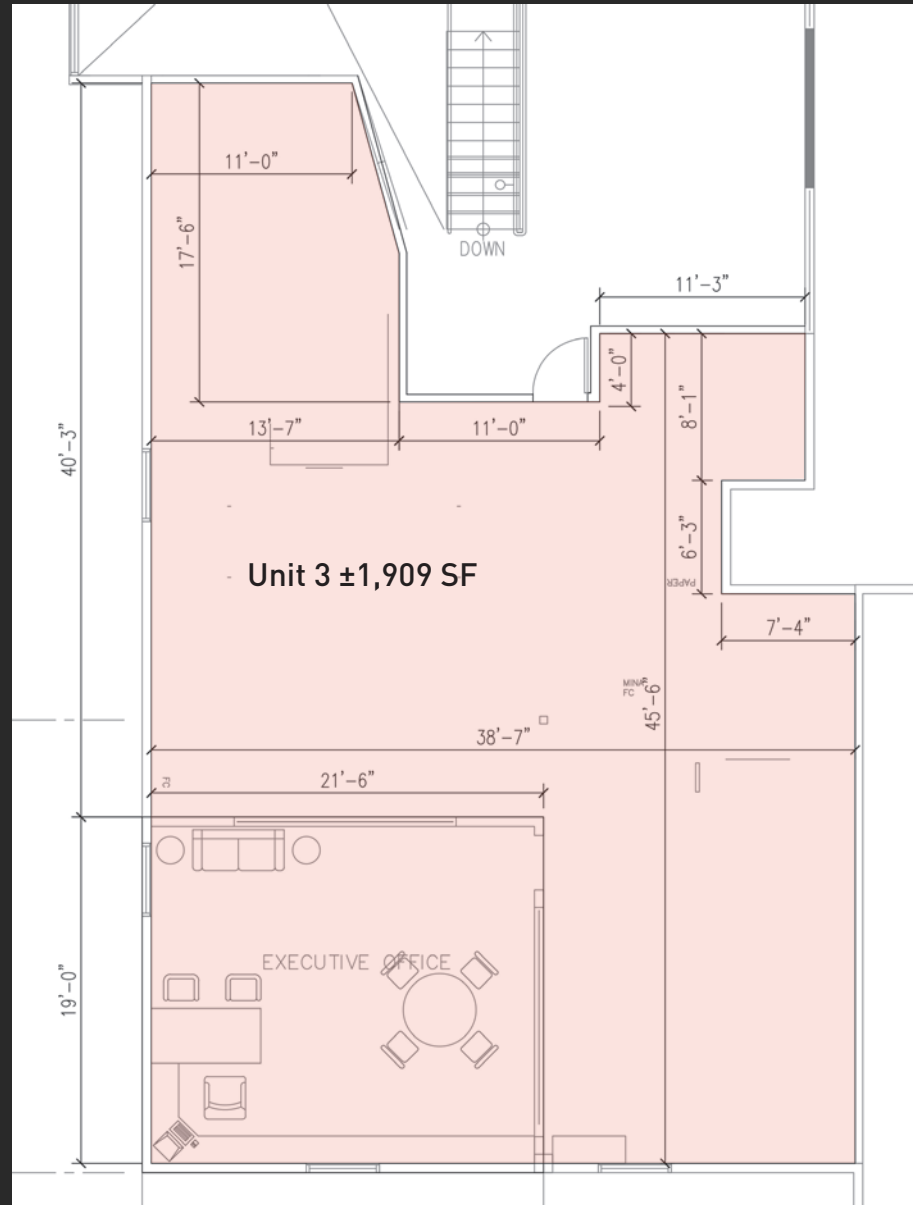
3975 LANDMARK STREET
CULVER CITY, CA 90232

Douglas Marshall, SIOR
310.899.2745
dmarshall@leewestla.com
BRE 00869275

Ian Ameche
310.899.2748
iameche@leewestla.com
BRE 01976053

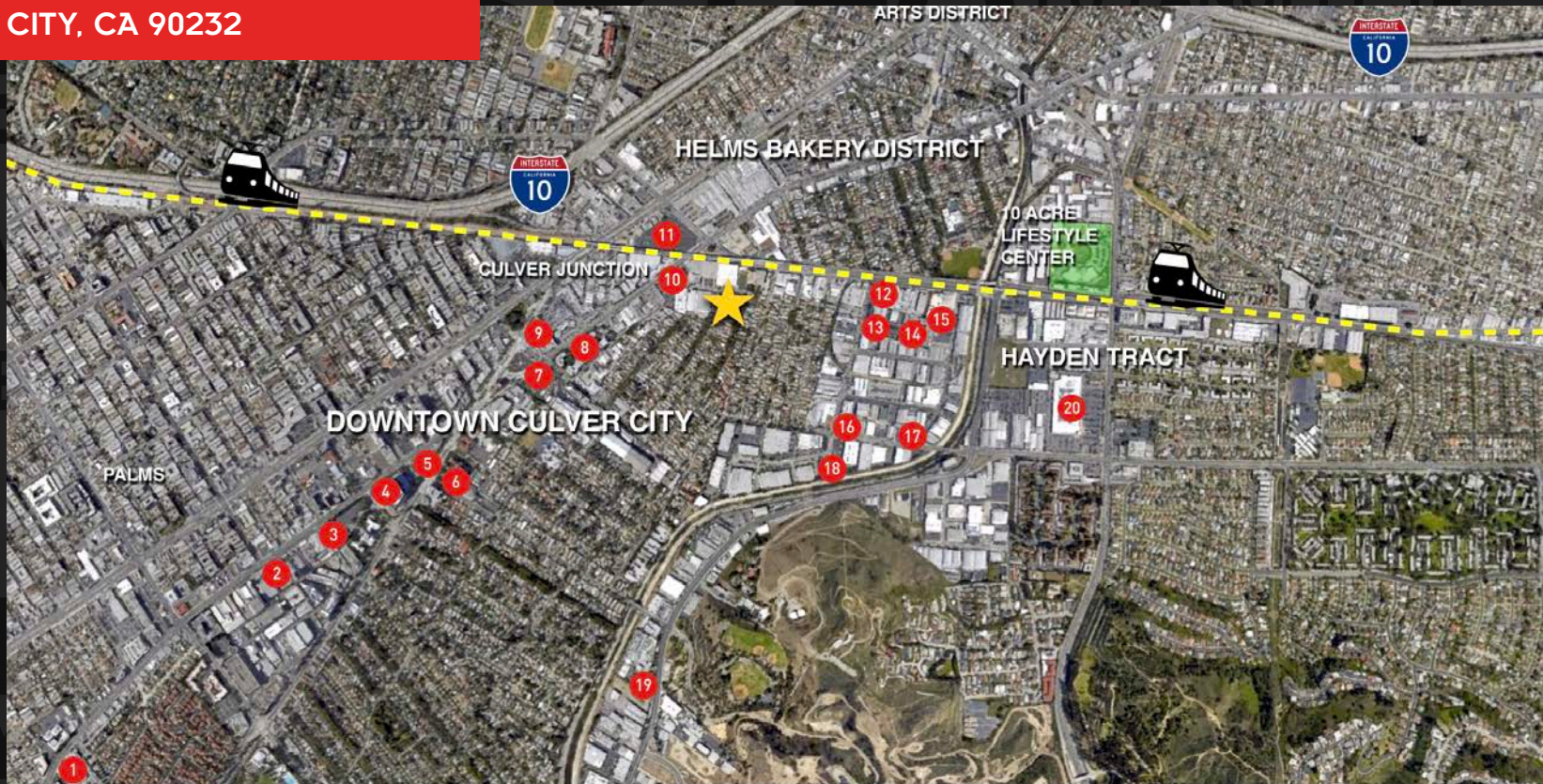


1508 17th Street, Santa Monica, CA
310.899.2700
WWW.LEEWESTLA.COM | BRE 01222000



MAP

3975 LANDMARK STREET
CULVER CITY, CA 90232



- | | | | |
|--------------------------|-------------------------------------|--|-------------------------------|
| 1. NFL Network | 6. Culver City City Hall | 11. Metro Expo Culver City Station  | 16. Smashbox Studios |
| 2. Sony Pictures Studios | 7. The Culver Studios | 12. Big Picture Entertainment | 17. The Schiff Company |
| 3. Columbia Pictures | 8. Sony Pictures Digital | 13. Scopely Entertainment | 18. Beats by Dre Headquarters |
| 4. Sony Studio Tour | 9. Trader Joe's | 14. Fourth Wall Studios | 19. National Public Radio |
| 5. Kirk Douglas Theater | 10. The Platform Retail Development | 15. POP Sugar Studios | 20. Target |



Douglas Marshall, SIOR
310.899.2745
dmarshall@leewestla.com
BRE 00869275

Ian Ameche
310.899.2748
iameche@leewestla.com
BRE 01976053