

8915 La Cienega Blvd. Unit F Inglewood, CA 90301



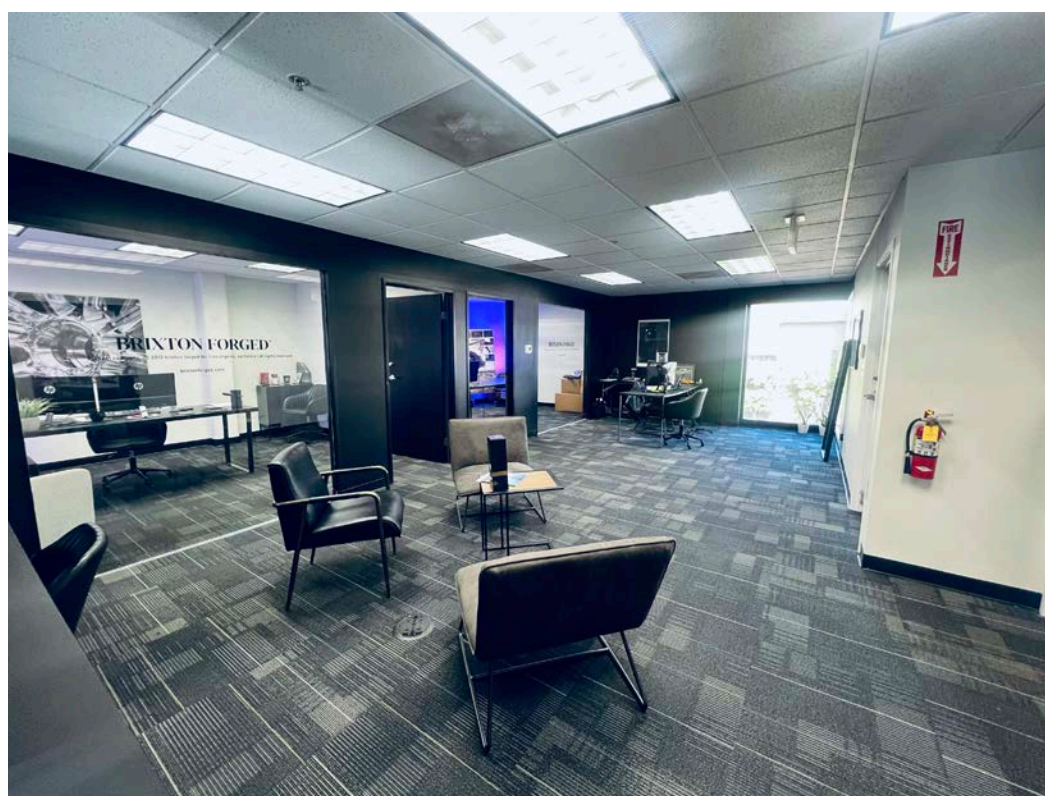
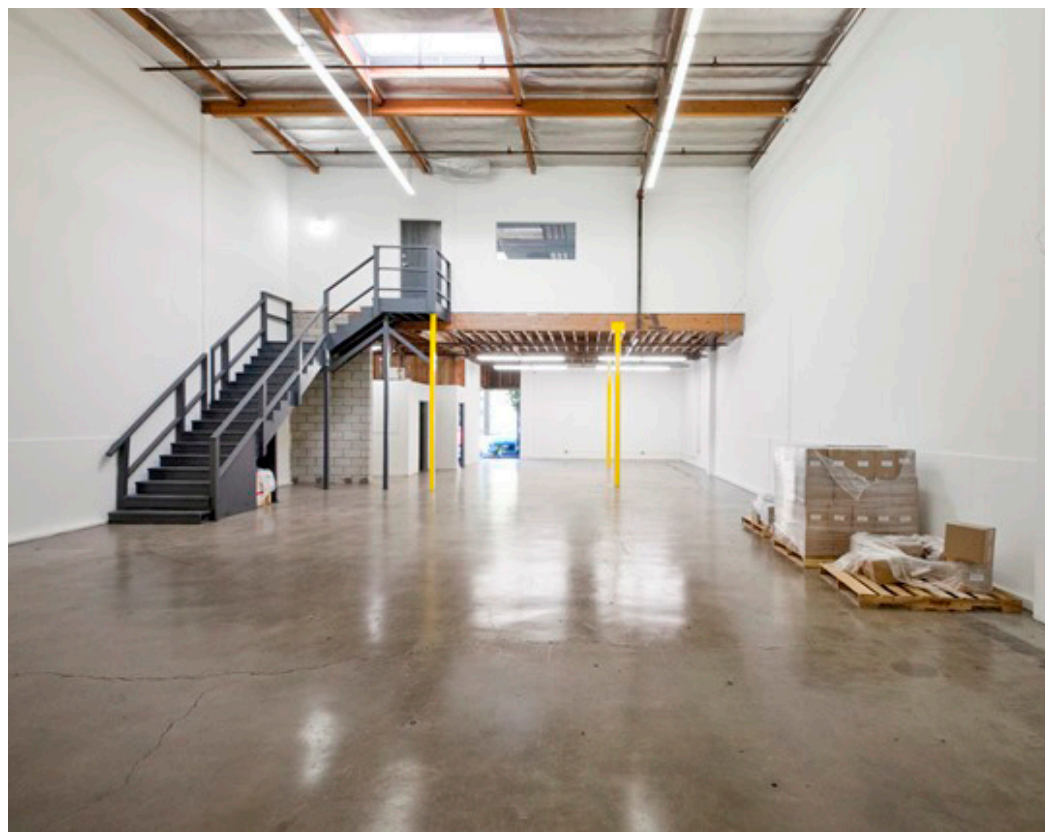
A DIVISION OF



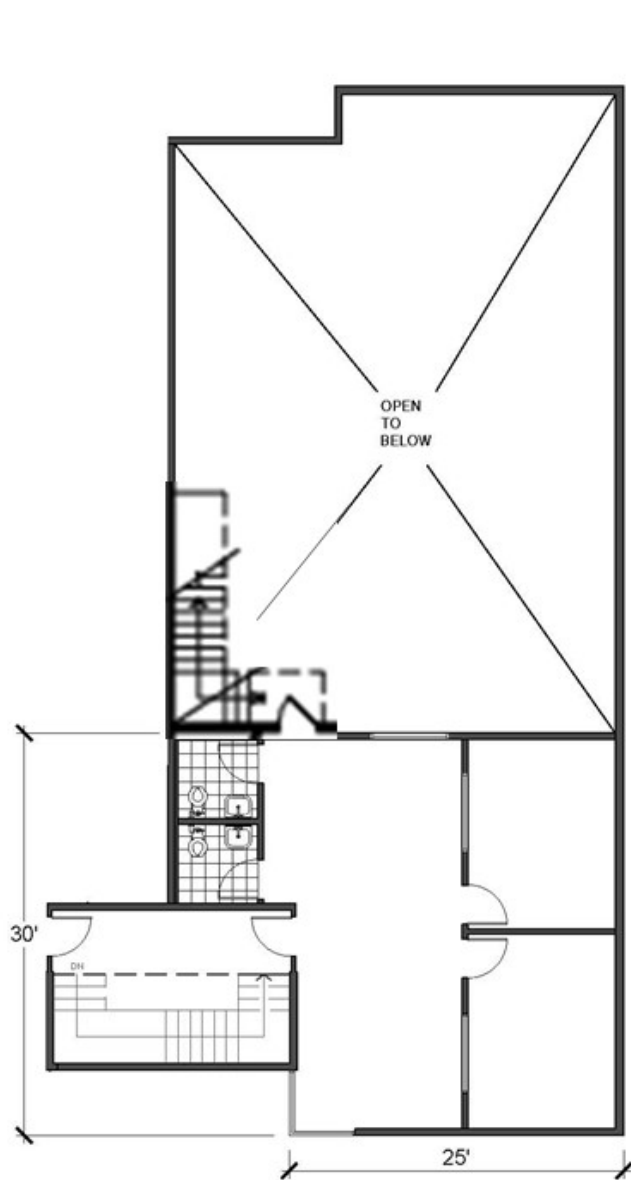
LEE &
ASSOCIATES



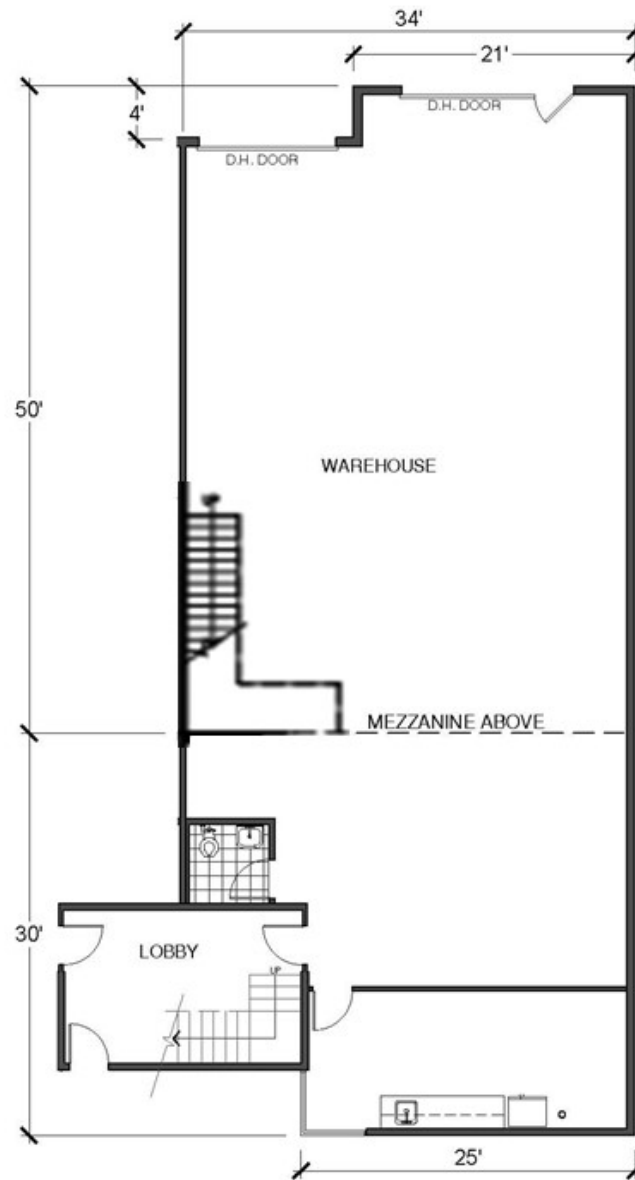
PREMISES	± 3,800 SF ± 2,800 SF Warehouse ± 1,000 SF Office
RENT	\$2.15/SF, NNN
OCCUPANCY	Immediate
TERM	3 - 5 Years
PARKING	5 Parking Spaces
FEATURES	- Two Private Offices - Restrooms Upstairs and Down - 22' Clear Height - LAX & 405 FWY Adjacent - One block from the new ConRAC LAWA car rental facility - No 53' Trucks Allowed
WALKABILITY	72, Very Walkable
CONTACT	Gage Danley Associate 310.899.2749 gdanley@leewestla.com DRE #: 02075191



FLOOR PLANS

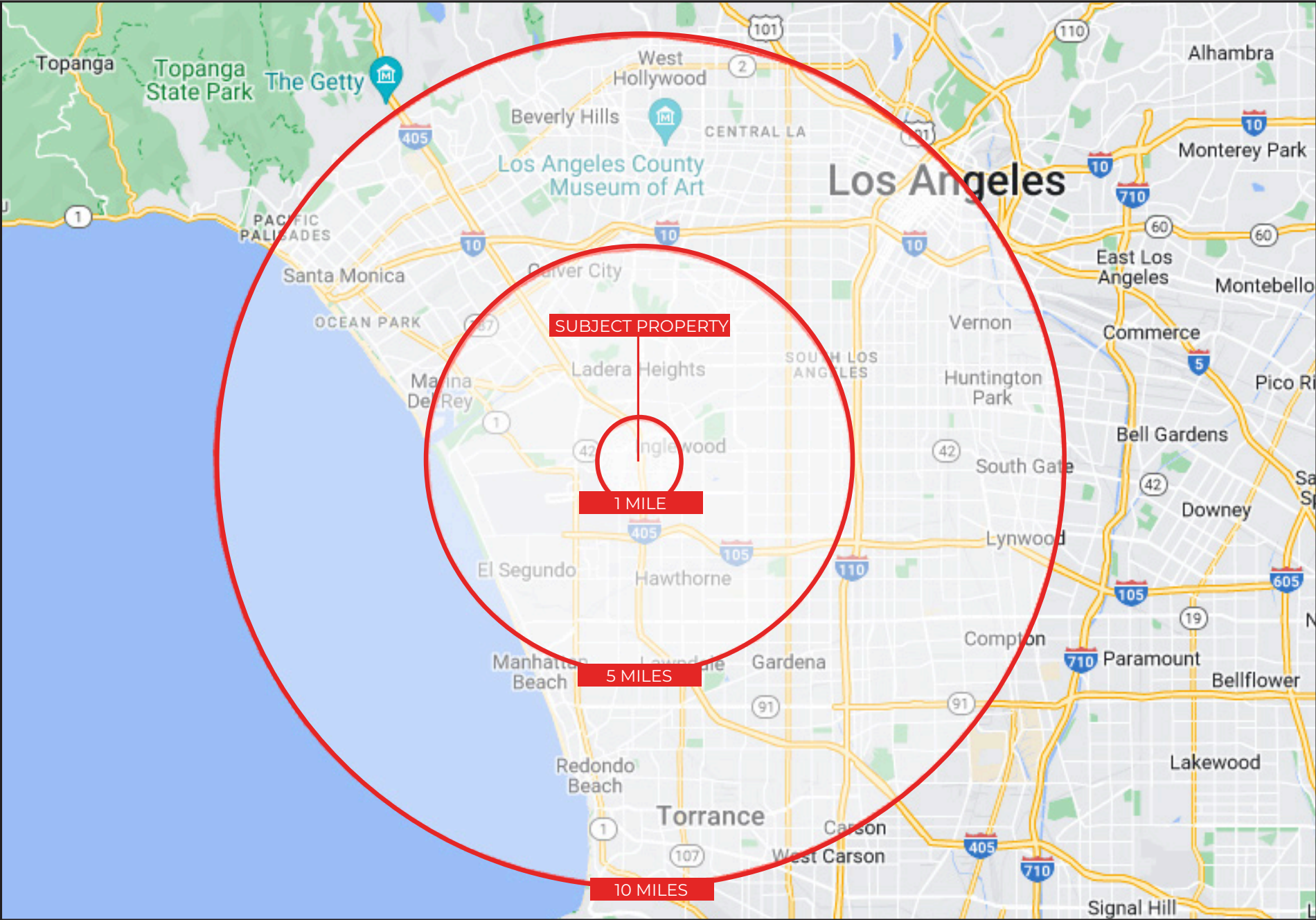


SECOND FLOOR_1,000 ± SF



FIRST FLOOR_2,800 ± SF

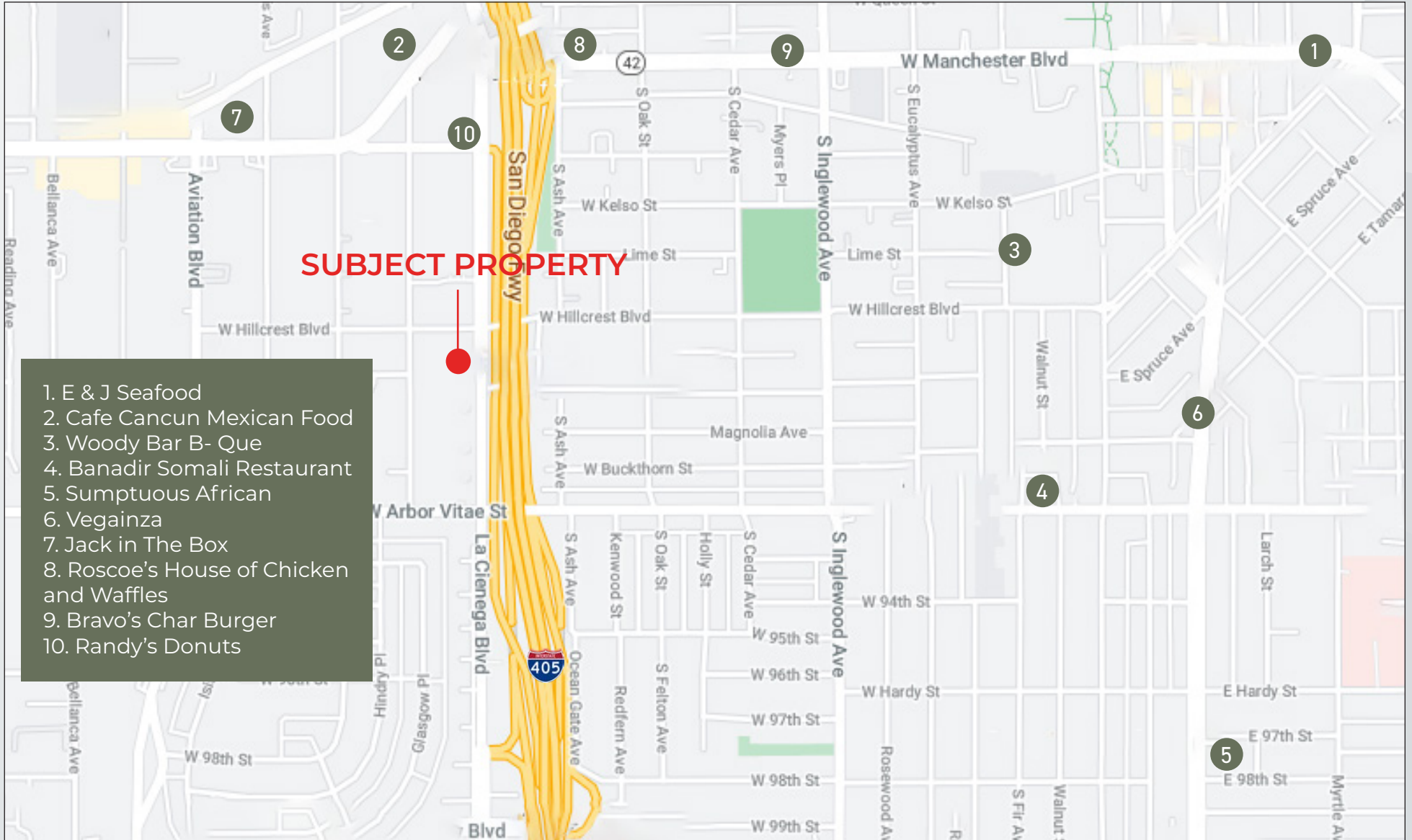
RADIUS MAP



A DIVISION OF
LEE & ASSOCIATES

8915 S La Cienega Blvd. Unit F Inglewood, CA 90301

NEARBY RESTAURANTS



CONTACT

Gage Danley
310.899.2749
gdanley@leewestla.com
Lic#: 02075191



A DIVISION OF



8915 S La Cienega Blvd. Unit F Inglewood, CA 90301