



± 1,114 - 3,775 SF MEDICAL / OFFICE SPACE AVAILABLE

12381 WILSHIRE BOULEVARD, LOS ANGELES, CA 90025

PREMISES Suite 201 ± 2,662 SF - [View Virtual Tour](#)
Suite 203 ± 1,114 SF - [View Virtual Tour](#)
Suites 201 & 203 Contiguous ± 3,775 SF

RENT \$3.75/SF, FSG

AVAILABLE Now

TERM 3 - 5 Years

FEATURES

- Excellent Light
- Large Windows
- Newly Renovated Lobby
- Walking Distance to Nearby Restaurants and Amenities

CONTACT **Brad McCoy** **Dylan Mahood, CCIM**
310.899.2730 310.899.2706
bmccoy@leewestla.com dmahood@leewestla.com
BKR DRE 01938098 AGT DRE 02027002



1508 17th Street, Santa Monica, CA | 310.899.2700

WWW.LEEWESTLA.COM | DRE 01222000

No warranty or representation is made to the accuracy of the foregoing information. Terms of sale or lease are subject to change or withdrawal without notice.

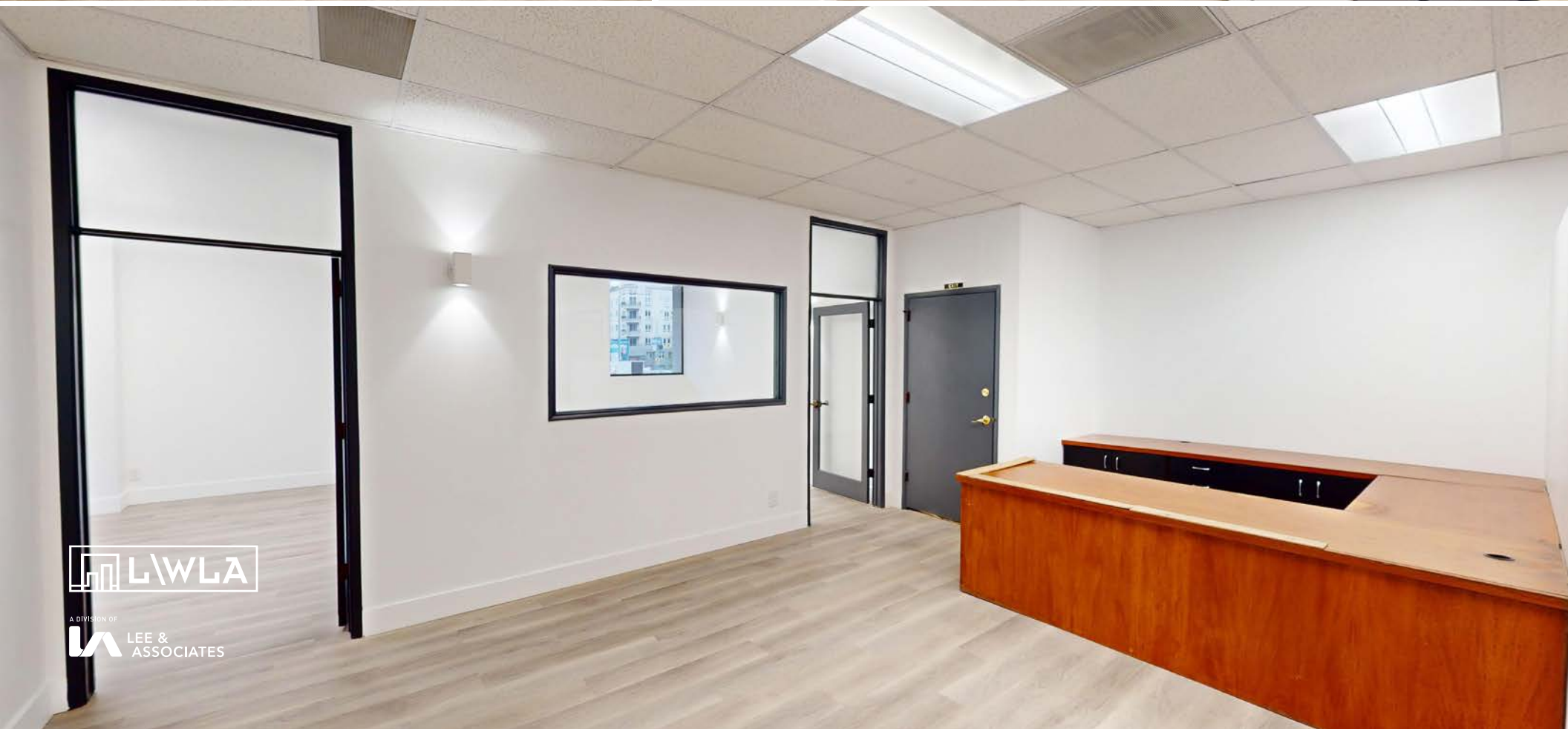
12381 WILSHIRE BOULEVARD
LOS ANGELES, CA 90025

ADAMSON
12381

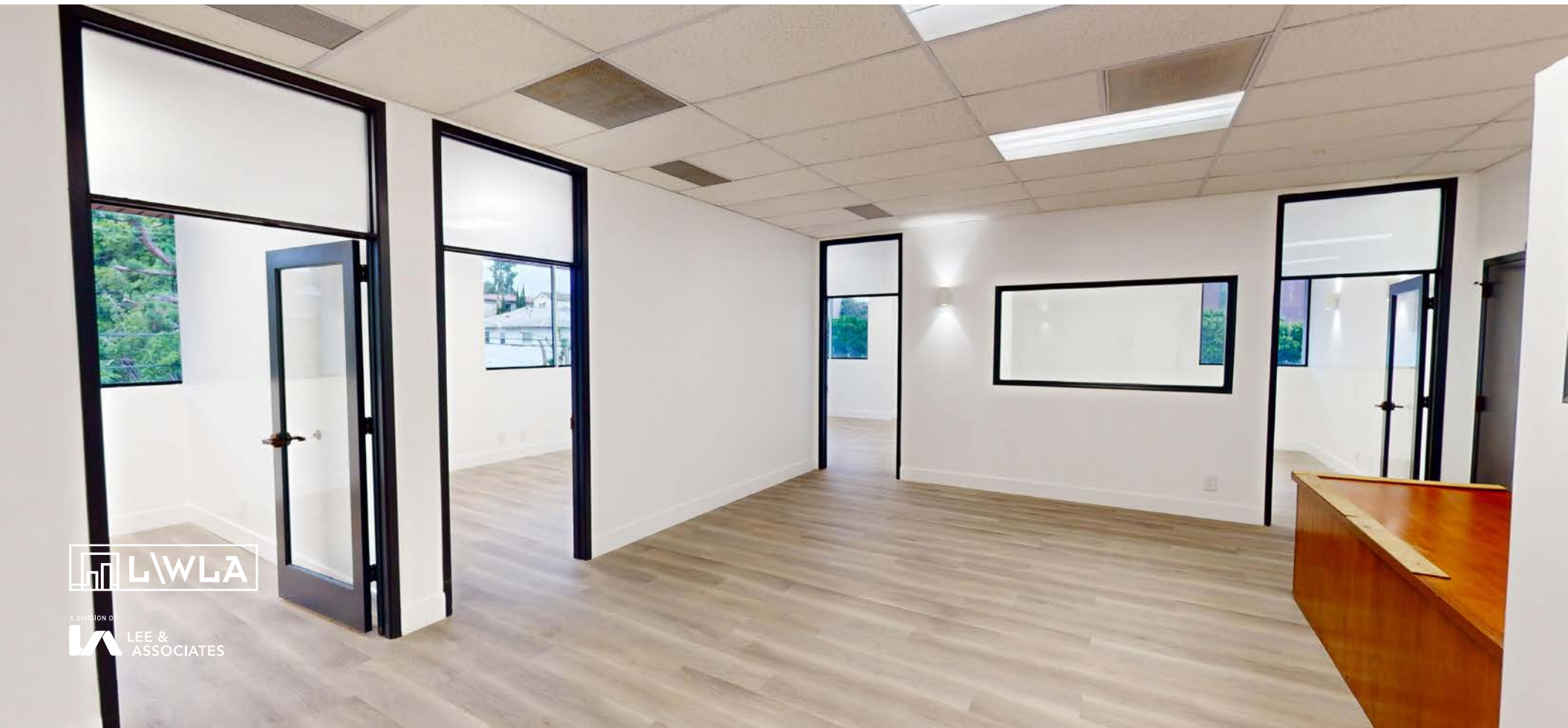


A DIVISION OF
LEE &
ASSOCIATES

SUITE 201



SUITE 201



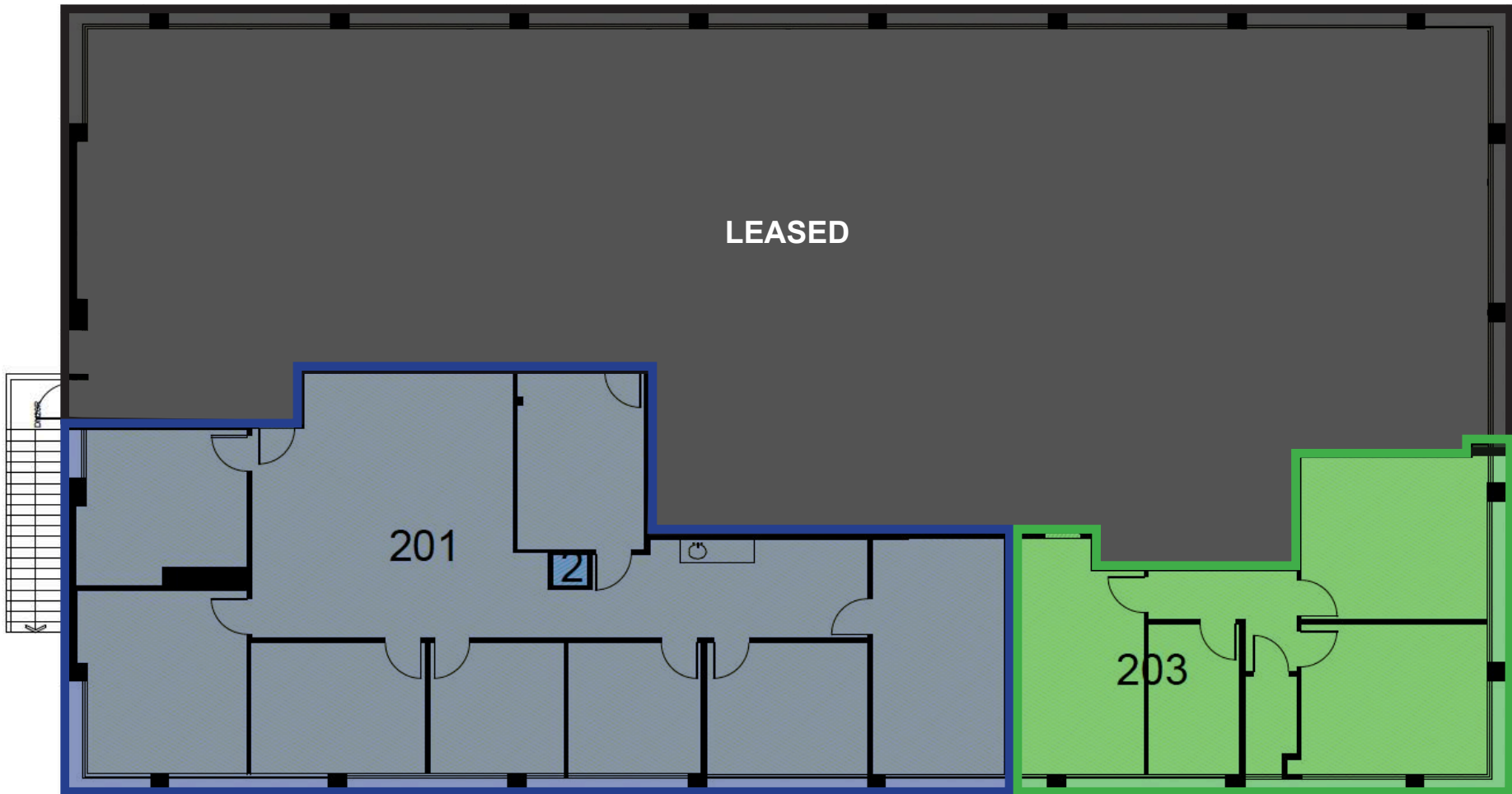
A DIVISION OF
LEE & ASSOCIATES

SUITE 203

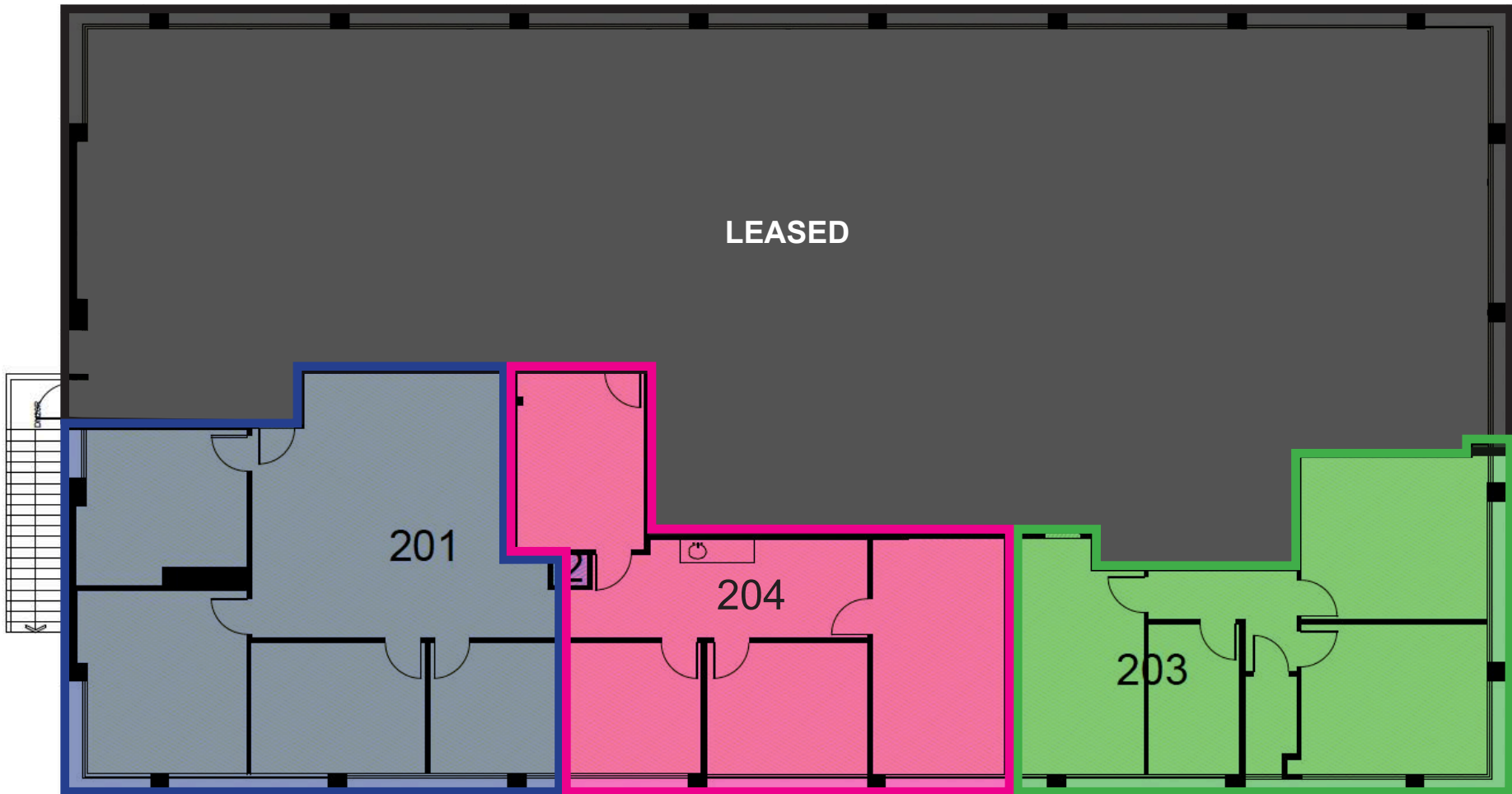


A DIVISION OF
LEE & ASSOCIATES

FLOOR PLAN



POTENTIAL SUITE DIVISIONS



Downtown Santa Monica

Subject Property



A DIVISION OF
LEE & ASSOCIATES

Brad McCoy
310.899.2730

bmccoy@leewestla.com
BKR DRE 01938098

Dylan Mahood, CCIM
310.899.2706

dmahood@leewestla.com
AGT DRE 02027002