



**± 1,100 - 2,662 SF MEDICAL / OFFICE SPACE AVAILABLE**

**12381 WILSHIRE BOULEVARD, LOS ANGELES, CA 90025**

PREMISES Suite 203 ± 2,662 SF - [View Virtual Tour](#)  
Suite 203 is Divisible to ± 1,100 & 1,562 SF

RENT \$3.75/SF, FSG

AVAILABLE Now

TERM 3 - 5 Years

FEATURES

- Excellent Light
- Large Windows
- Newly Renovated Lobby
- Walking Distance to Nearby Restaurants and Amenities

CONTACT **Brad McCoy** **Dylan Mahood, CCIM**  
310.899.2730 310.899.2706  
bmccoy@leewestla.com dmahood@leewestla.com  
BKR DRE 01938098 AGT DRE 02027002



1508 17th Street, Santa Monica, CA | 310.899.2700

[WWW.LEEWESTLA.COM](http://WWW.LEEWESTLA.COM) | DRE 01222000

No warranty or representation is made to the accuracy of the foregoing information. Terms of sale or lease are subject to change or withdrawal without notice.

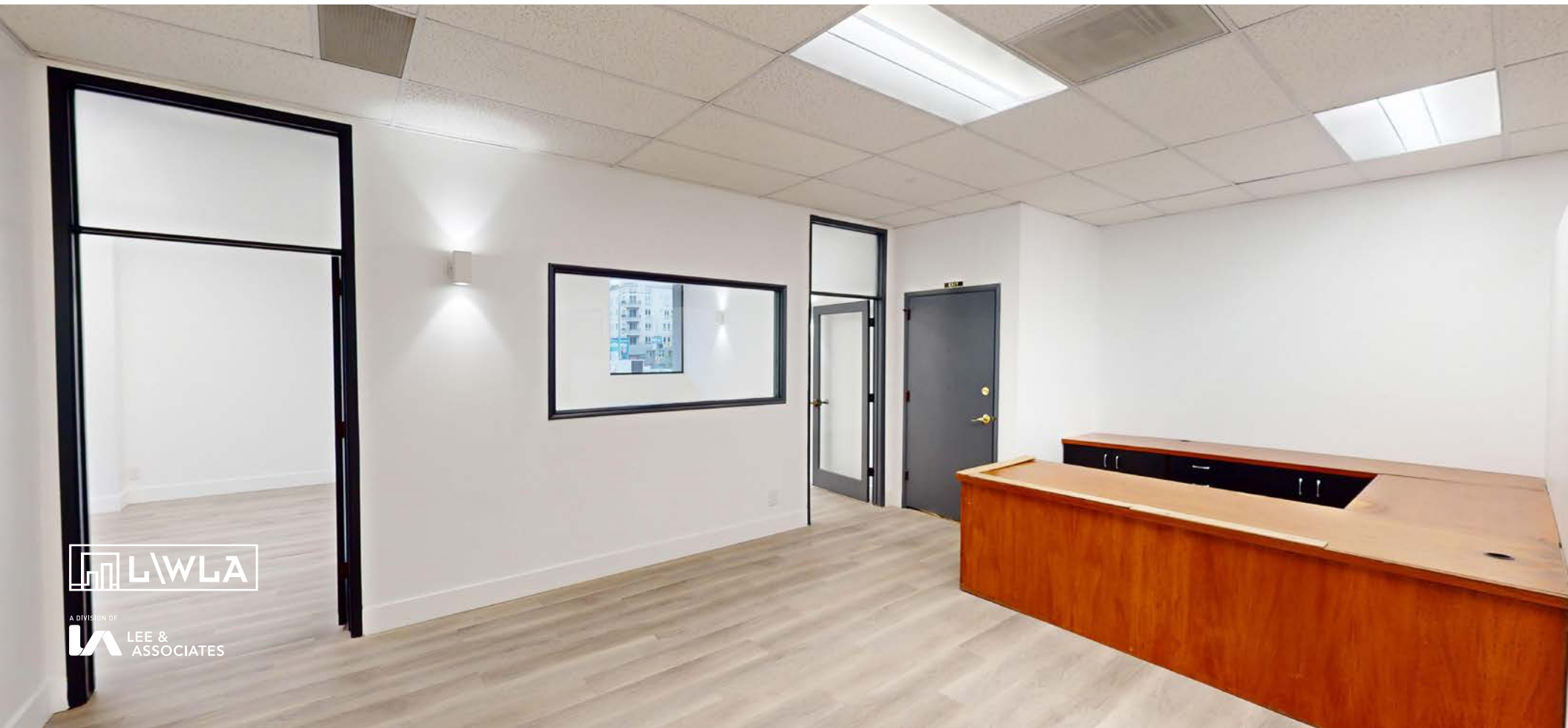
**12381 WILSHIRE BOULEVARD**  
**LOS ANGELES, CA 90025**

ADAMSON  
12381



A DIVISION OF  
LEE &  
ASSOCIATES

# SUITE 203

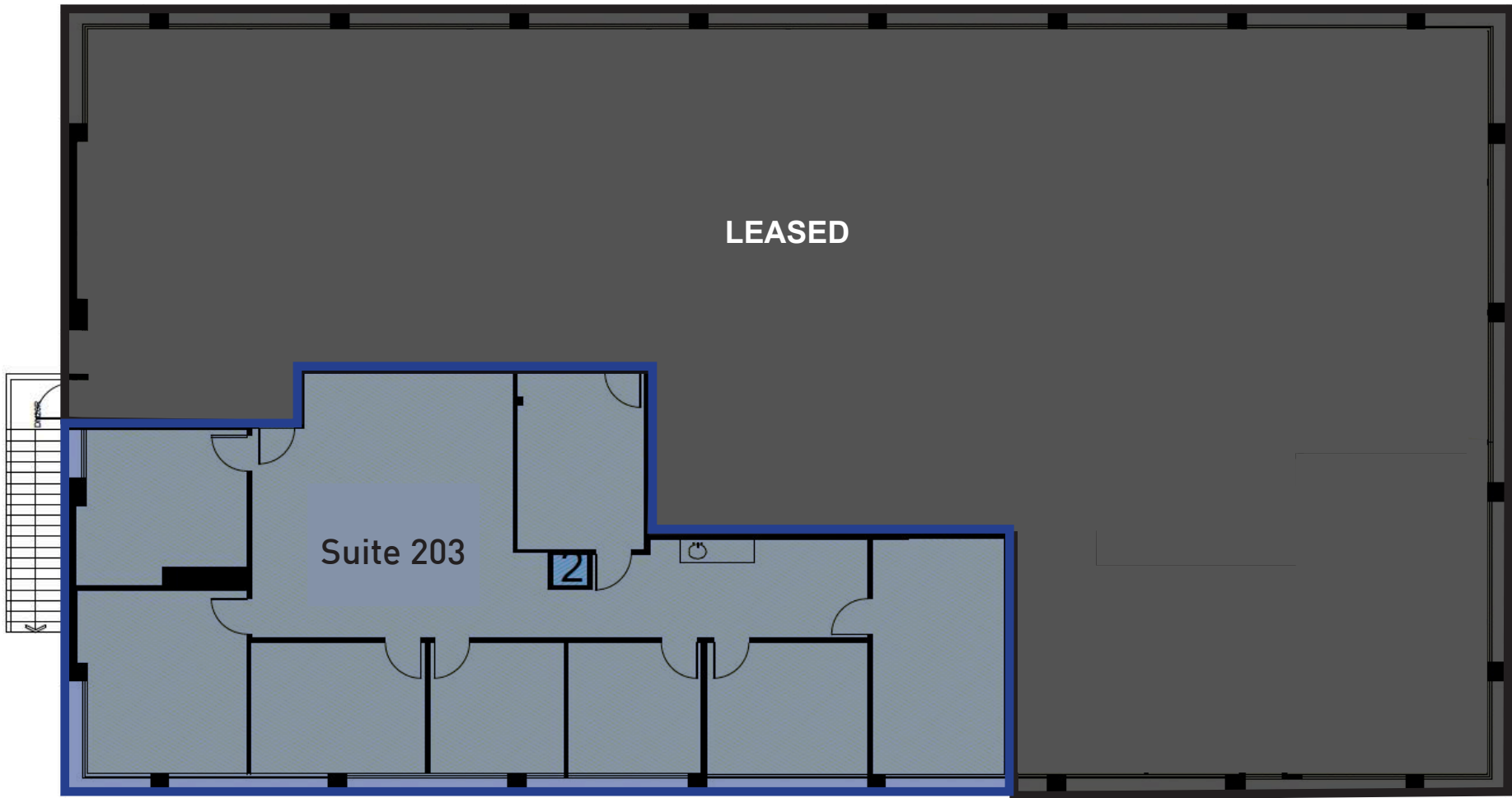


# SUITE 203



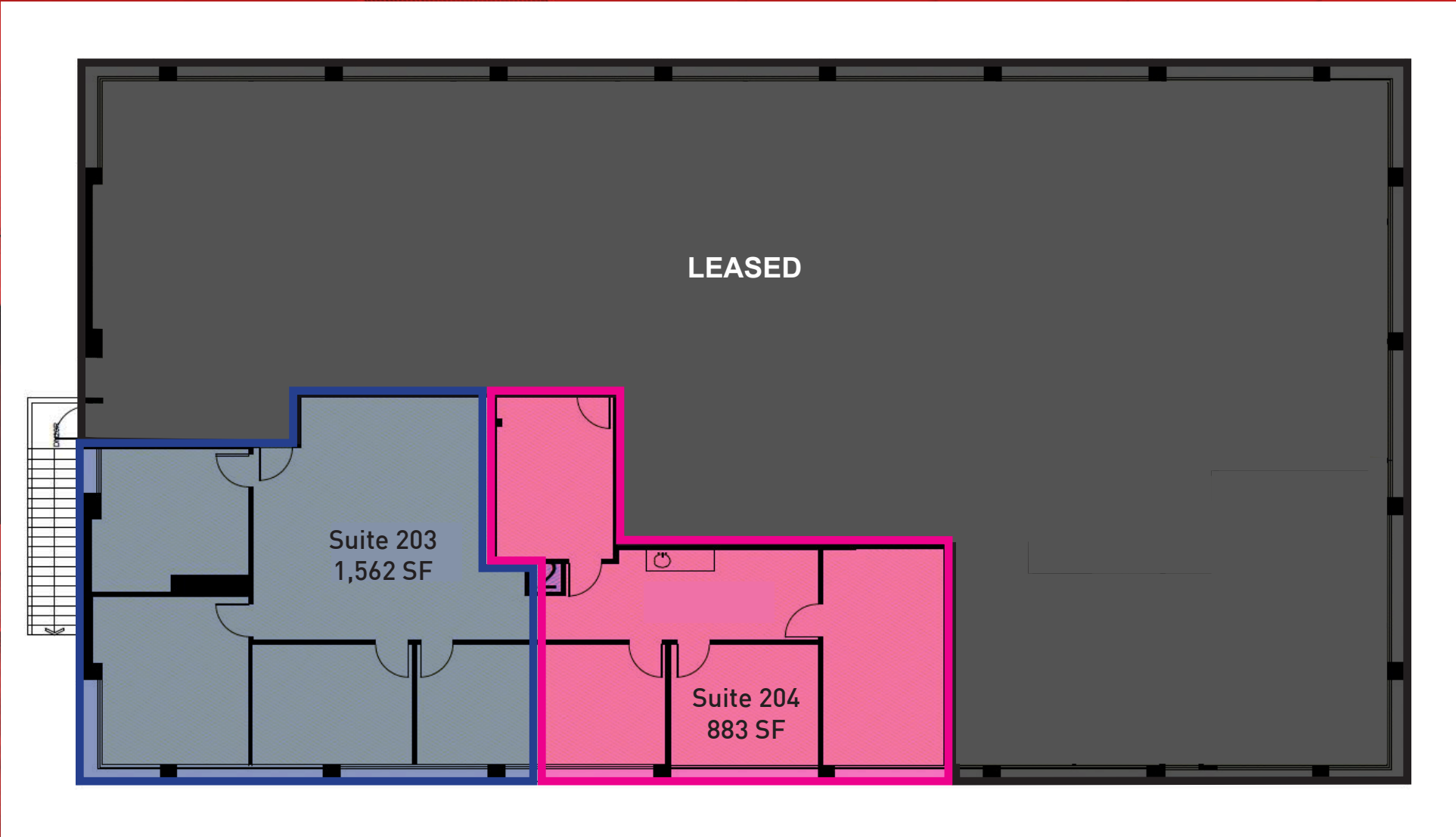
A DIVISION OF  
**LEE & ASSOCIATES**

# FLOOR PLAN



A DIVISION OF  
**LEE & ASSOCIATES**

# POTENTIAL SUITE DIVISIONS



Downtown Santa Monica

Subject Property



A DIVISION OF  
**LEE & ASSOCIATES**

Brad McCoy  
310.899.2730

[bmccoy@leewestla.com](mailto:bmccoy@leewestla.com)  
BKR DRE 01938098

Dylan Mahood, CCIM  
310.899.2706

[dmahood@leewestla.com](mailto:dmahood@leewestla.com)  
AGT DRE 02027002