



**MEDICAL / OFFICE SPACE AVAILABLE**  
**12381 WILSHIRE BOULEVARD, LOS ANGELES, CA 90025**

PREMISES Suite 105 ± 1,113  
Suite 203 ± 1,562 SF - [View Virtual Tour](#)

RENT Office - \$3.75/SF, FSG  
Medical - Inquire with Broker

AVAILABLE Now

TERM 3 - 5 Years

FEATURES

- Excellent Light
- Large Windows
- Newly Renovated Lobby
- Walking Distance to Nearby Restaurants and Amenities

CONTACT **Brad McCoy** 310.899.2730  
[bmccoy@leewestla.com](mailto:bmccoy@leewestla.com)  
BKR DRE 01938098

**Dylan Mahood, CCIM** 310.899.2706  
[dmahood@leewestla.com](mailto:dmahood@leewestla.com)  
AGT DRE 02027002



1508 17th Street, Santa Monica, CA | 310.899.2700

[WWW.LEEWESTLA.COM](http://WWW.LEEWESTLA.COM) | DRE 01222000

No warranty or representation is made to the accuracy of the foregoing information. Terms of sale or lease are subject to change or withdrawal without notice.

**12381 WILSHIRE BOULEVARD  
LOS ANGELES, CA 90025**

ADAMSON  
12381



A DIVISION OF  
**LEE & ASSOCIATES**



 LWLA

A DIVISION OF  
 LEE &  
ASSOCIATES

# SUITE 105



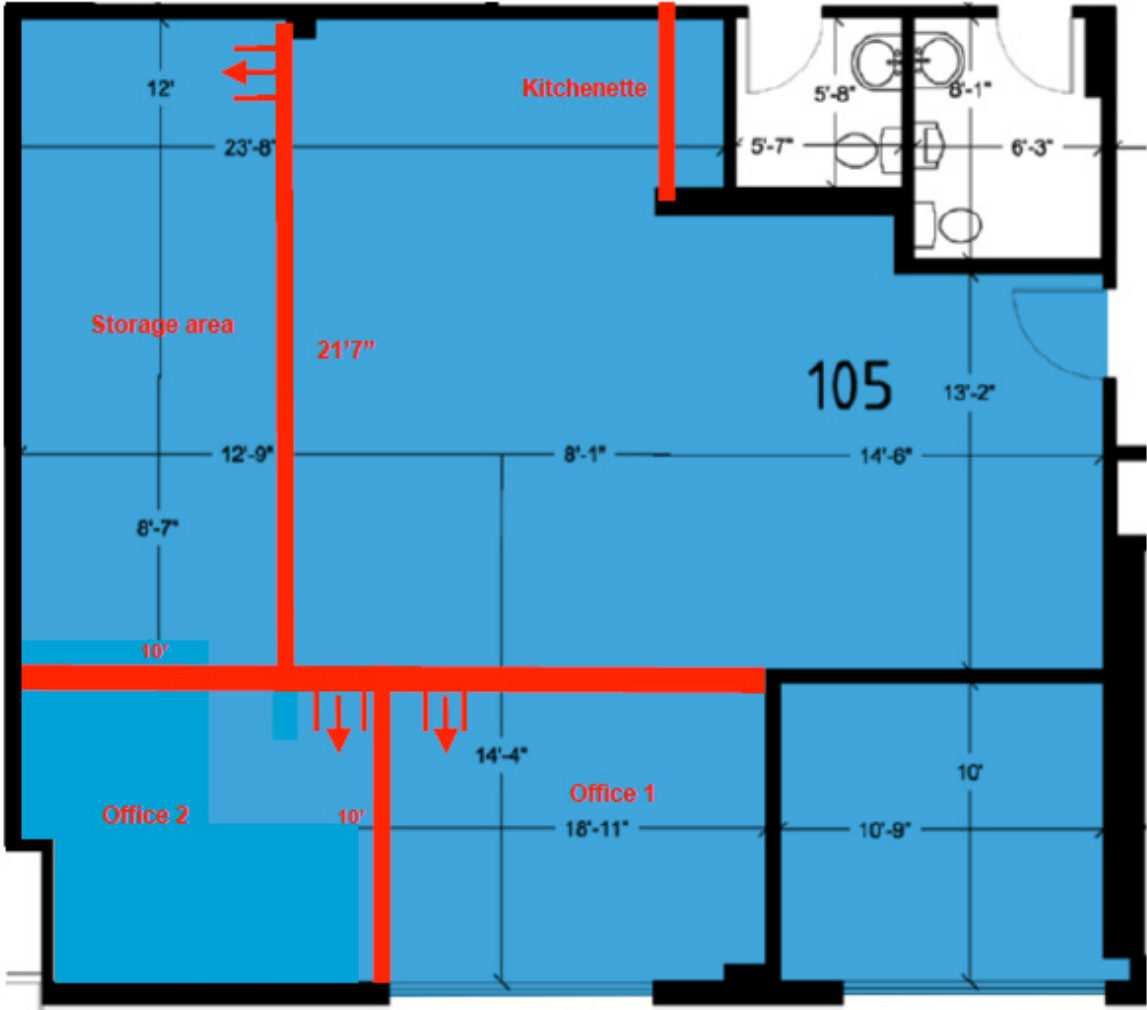
A DIVISION OF  
**LWLA** LEE & ASSOCIATES

# SUITE 203



A DIVISION OF  
**LEE & ASSOCIATES**

# FLOOR PLAN - SUITE 105



# FLOOR PLAN - SUITE 203

NOT A PART

Suite 203  
1,562 SF



A DIVISION OF  
**LEE & ASSOCIATES**



Subject Property



A DIVISION OF  
**LEE & ASSOCIATES**

Brad McCoy  
310.899.2730

[bmccoy@leewestla.com](mailto:bmccoy@leewestla.com)  
BKR DRE 01938098

Dylan Mahood, CCIM  
310.899.2706

[dmahood@leewestla.com](mailto:dmahood@leewestla.com)  
AGT DRE 02027002