

# 1512 16TH STREET

SANTA MONICA, CA 90404



FOR LEASE



A DIVISION OF



PRIVATE CREATIVE STUDIO



# FEATURES

- Private Creative Studio for Lease
- Modern High End Kitchen (Sub Zero Refrigerator, Bluestar Gas Range, Dishwasher)
- Wood Floors Throughout
- Abundant Natural Light
- Operable Windows with Exceptional Airflow Throughout
- Self Contained HVAC
- Building Signage Visible from Street
- Offices and Open Work Space
- Easy Access to Olympic Boulevard, Metro Rail, 10 Fwy and PCH



No warranty or representation is made to the accuracy of the foregoing information. Terms of sale or lease are subject to change or withdrawal without notice.

## PREMISES

Studio 2 - 1,200 RSF

## TERM

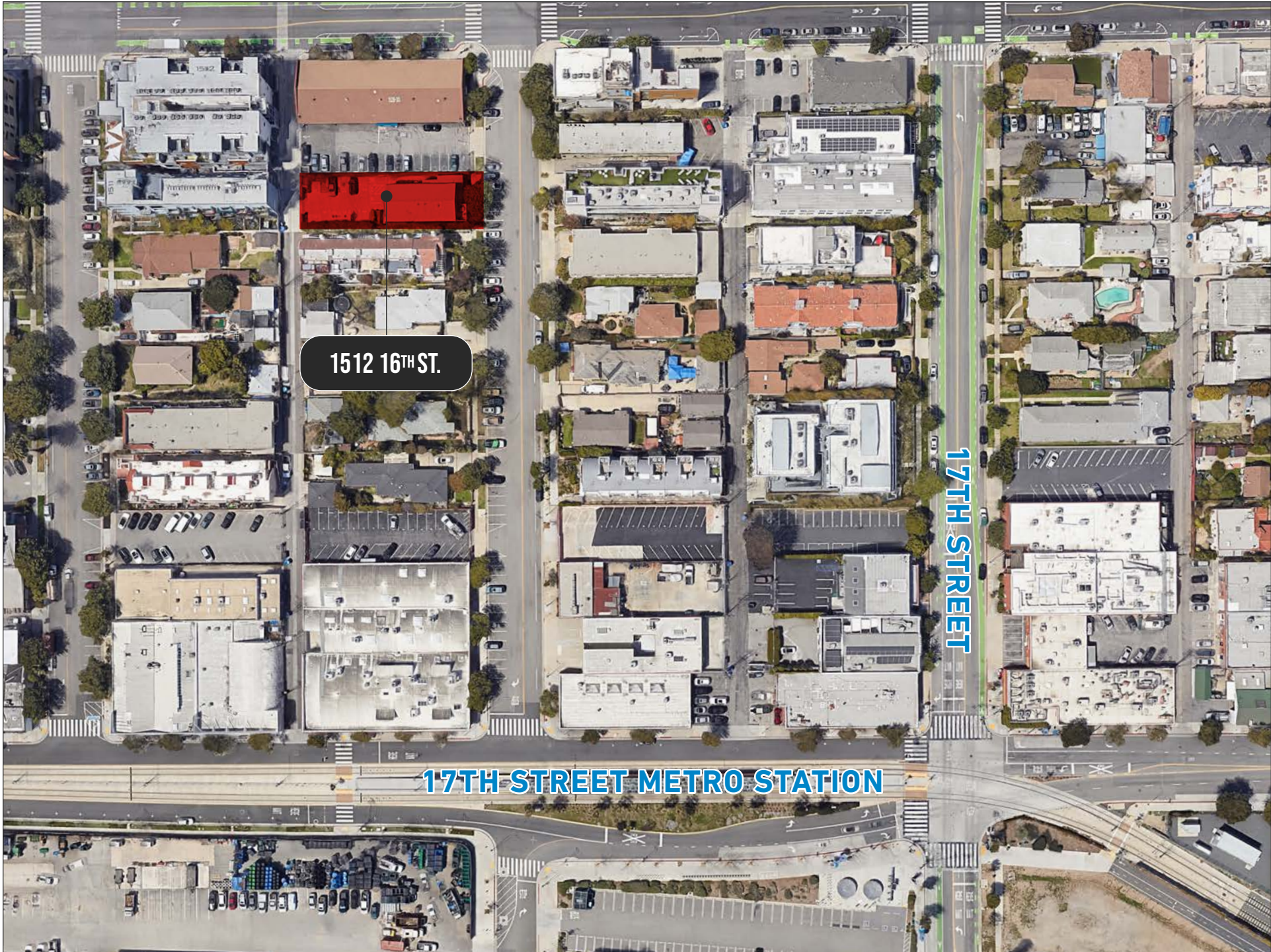
3+ Years

## OCCUPANCY

Immediate

## PARKING

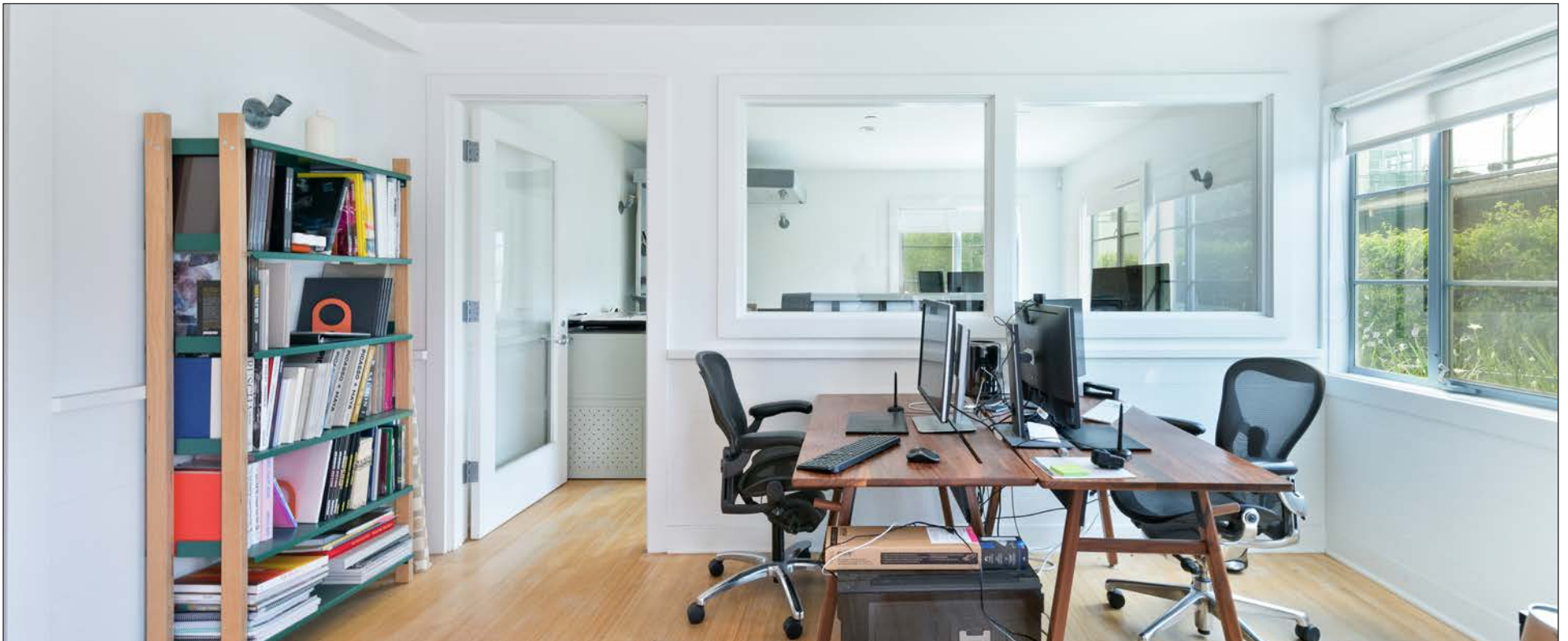
2 - 4 Spaces



1512 16<sup>TH</sup> ST.

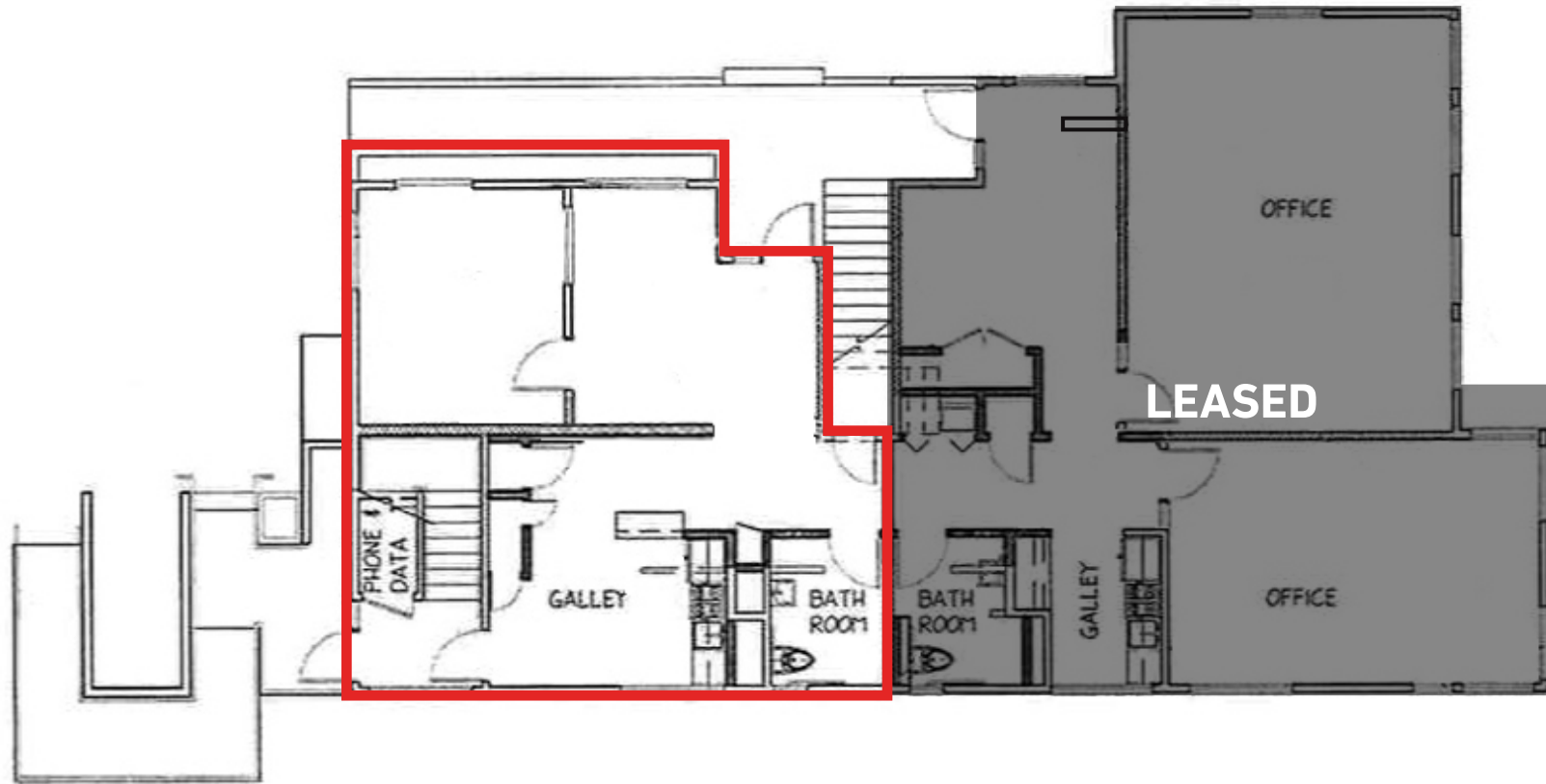
17<sup>TH</sup> STREET

17<sup>TH</sup> STREET METRO STATION





# FLOOR PLAN



# NEARBY MAJOR TENANTS

## WEST OLYMPIC CORRIDOR

Bad Robot  
Indian Paintbrush  
Final Cut  
JBC Music  
Arsenal FX Color  
Digital Nation Entertainment  
Cutters  
Parks Mac Donald  
Planet Blue HQ  
Radical Media  
Threshold Entertainment

## BROADWAY PLACE

General Editorial  
TigerConnect  
Cut + Run  
Cosmo Street Editorial  
Apache

MAD Architects  
Rock Paper Scissors  
Cross Creek Entertainment

## COLORADO CENTER

HULU  
HBO  
Bird  
ShoeDazzle

## PENN FACTORY/PENN STATION

GoodRX  
Kite Pharma  
Redbull North America HQ  
Tala  
Center for Media & Design

1512 16TH ST.

## COLORADO CORRIDOR

Viacom  
Lionsgate  
Interscope Records  
Illumination  
Gameshow Network  
Universal Music Group  
Starz Entertainment  
Simple Practice  
Goop  
The Honest Company  
FIGS  
Reddit

## WATER GARDEN

Amazon Studios  
CBS  
AMC Networks  
Oracle

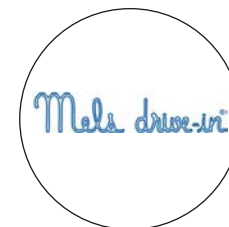
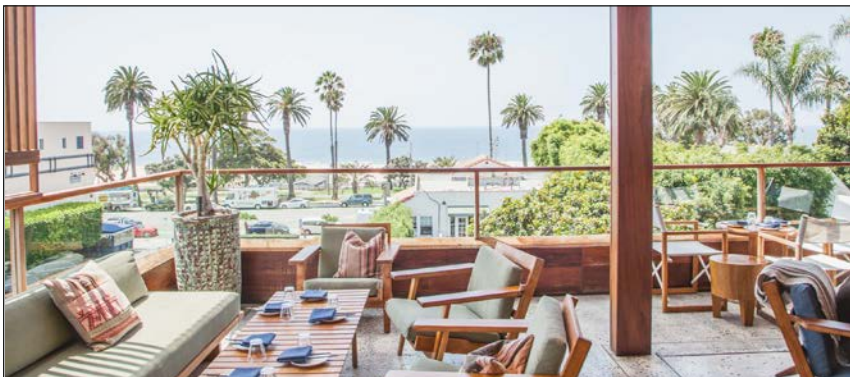
## BERGAMOT STATION

FIG Gallery  
Ikon Limited Fine Art  
Montalba Architects  
Sulkin Studio Architecture

## BERKELEY SM EAST

Blackbear Pictures  
Blue Bonsai  
Jenni Kayne  
Soundbox  
Apogee Electronics  
Cartel  
Yoga Glo

# AREA AMENITIES





# CONTACTS

**GEORGE WILSON**

310.899.2738  
gwilson@leewestla.com  
AGT DRE 02090678

**DAVID WILSON**

310.899.2707  
dwilson@leewestla.com  
AGT DRE 00822760

**BRAD MCCOY**

310.899.2730  
bmccoy@leewestla.com  
BKR DRE 01938098

Lee & Associates Los Angeles West, Inc.  
1508 17th Street, Santa Monica, CA 90404  
www.leewestla.com | DRE 01222000



A DIVISION OF



LEE &  
ASSOCIATES