

1725

**BERKELEY STREET
SANTA MONICA, CA 90404**



A DIVISION OF



**LEE &
ASSOCIATES**

CREATIVE OFFICE / PRODUCTION STUDIOS FOR LEASE

FEATURES

- Fully built out creative office suite(s)
- Great for Production / Post Production, Tech, Media, & Advertising
- Kitchenette
- Operable steel windows
- Concrete floors
- Exposed high-height ceilings
- Excellent natural light and airflow throughout
- In suite restroom (additional common restrooms also available)
- Located in the highly desirable Santa Monica Media District
- Convenient access to Olympic Blvd 10 Fwy, PCH, & 405 Fwy

No warranty or representation is made to the accuracy of the foregoing information. Terms of sale or lease are subject to change or withdrawal without notice.

**SO
UTH**
IC & SOUND DESIGN



PREMISES

Studio 101 ± 1,000 SF
Studio 102 ± 1,200 SF
Total Contiguous ± 2,200 SF

RENT

Contact Broker

TERM

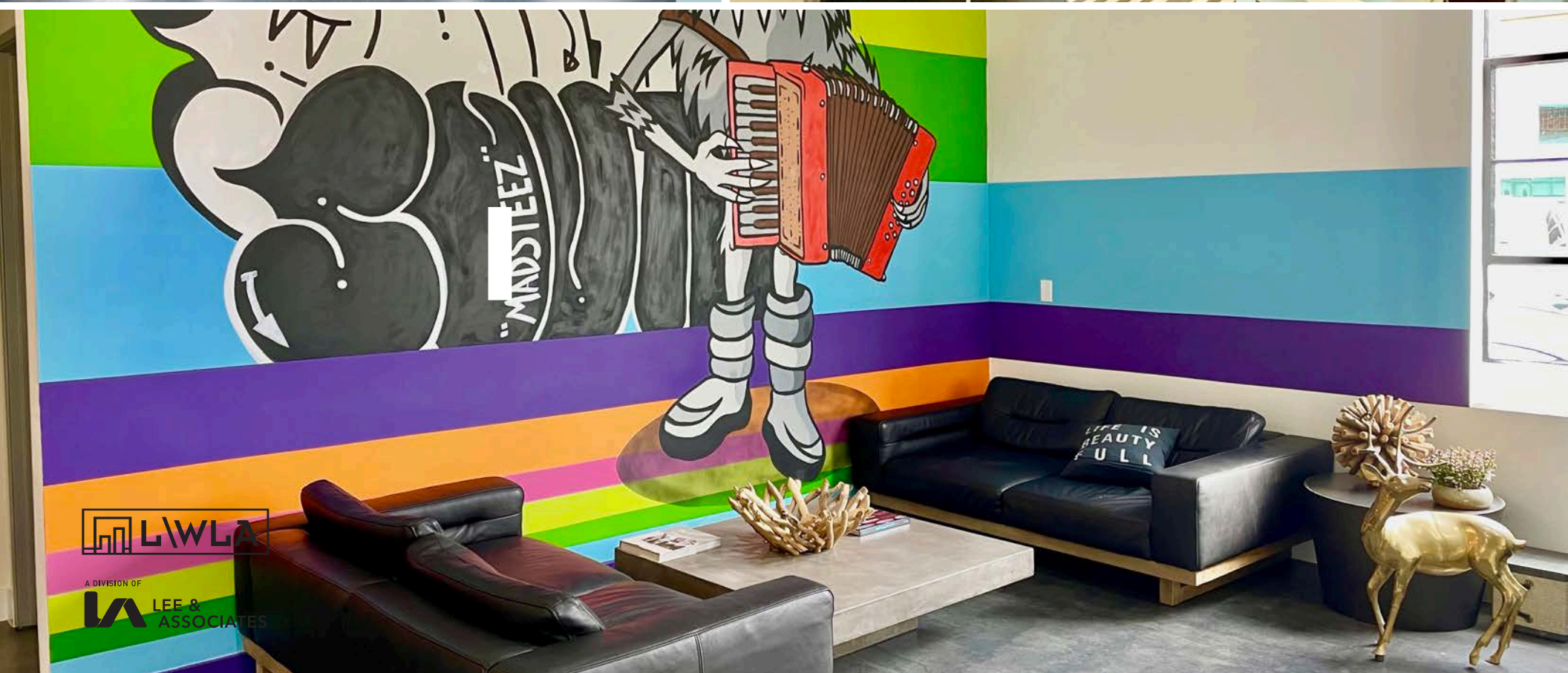
1- 5 Years

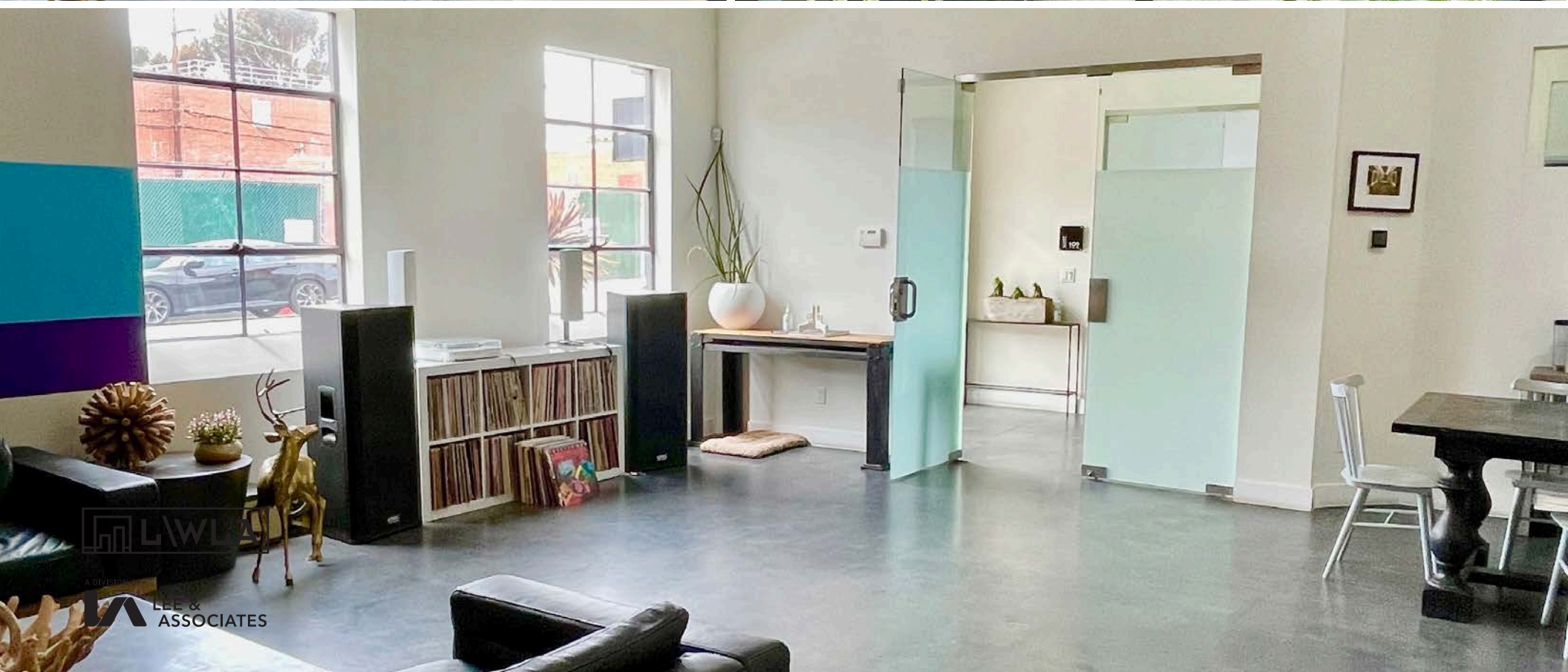
OCCUPANCY

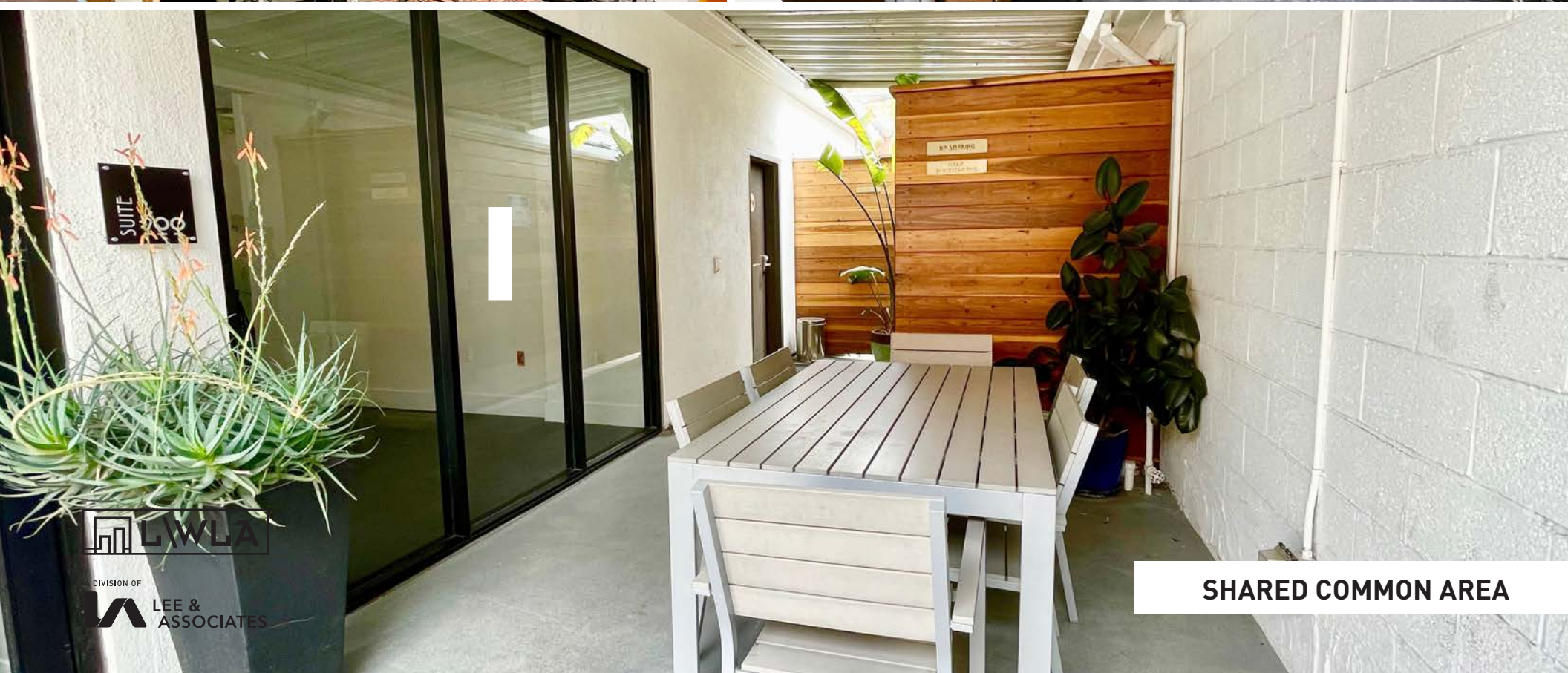
July 1, 2021

PARKING

Five (5) Spaces On Site
Parked in Tandem behind the building

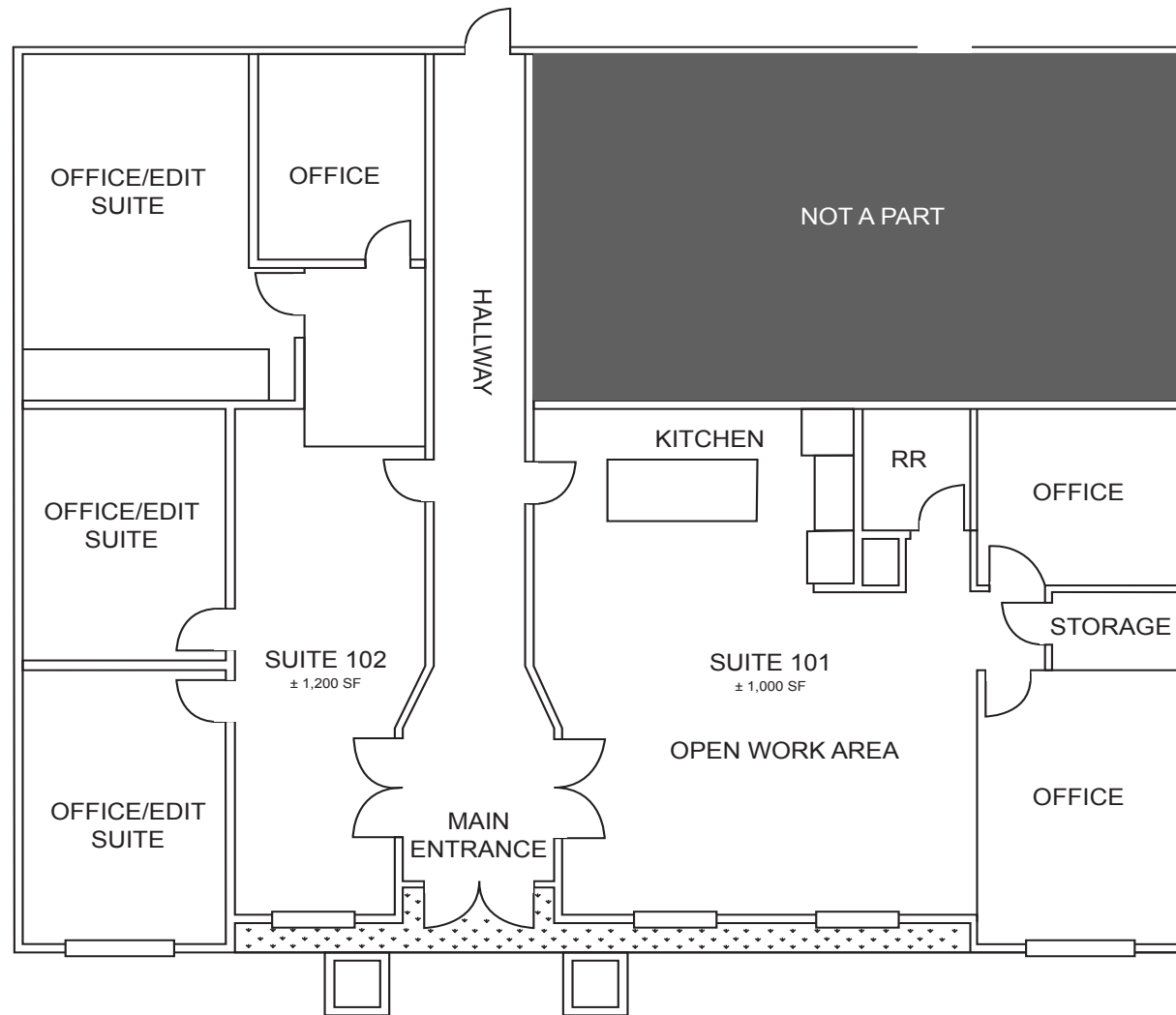






SHARED COMMON AREA

FLOOR PLAN



BERKELEY STREET



A DIVISION OF
LEE & ASSOCIATES

Brad McCoy

310.899.2730

bmccoy@leewestla.com

BKR DRE 01938098

David Wilson

310.899.2707

dwilson@leewestla.com

AGT DRE 00822760

George Wilson

310.899.2738

gwilson@leewestla.com

AGT DRE 02090678

NEARBY TENANTS



A DIVISION OF
LEE & ASSOCIATES

Brad McCoy

310.899.2730

bmccoy@leewestla.com

BKR DRE 01938098

David Wilson

310.899.2707

dwilson@leewestla.com

AGT DRE 00822760

George Wilson

310.899.2738

gwilson@leewestla.com

AGT DRE 02090678