

2-BUILDING CREATIVE CAMPUS WITH PATIO AND GATED PARKING



2200 MICHIGAN AVENUE
SANTA MONICA, CA

PREMISES Building A ± 5,990 SF (Inclusive of ± 2,690 SF Mezzanine)
Building B ± 3,160 SF

Property is contiguous to ± 9,150 SF of interior space with a bonus ± 962 SF patio inbetween both buildings.

RENT \$3.50/SF, MG

TERM 3 - 5 Years

PARKING 25 Interior Spaces
5 Exterior Spaces
Parking Included Years 1 - 2, Price Negotiable Years 3+

OCCUPANCY April 2025

ZONING IC - Industrial Conservation

FEATURES

- Recently Renovated
- Flexible Floor Plan
- High Ceilings
- Operable Windows
- Large Open Court Yard and Private Patio

CONTACT

James Wilson 310.899.2708 jwilson@leewestla.com AGT DRE 00883324	Dylan Mahood, CCIM 310.899.2706 dmahood@leewestla.com AGT DRE 02027002
--	--



A DIVISION OF



1508 17th Street, Santa Monica, CA | 310.899.2700

WWW.LEEWESTLA.COM | DRE 01222000

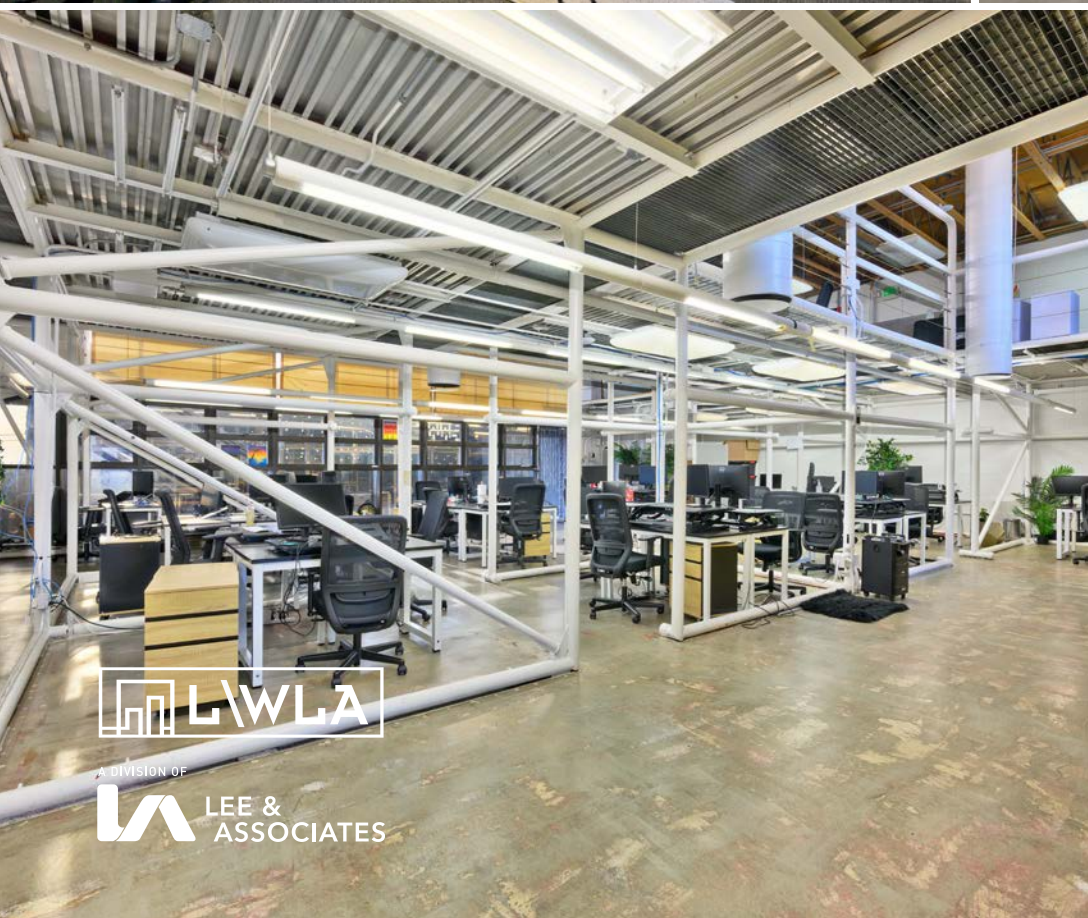
No warranty or representation is made to the accuracy of the foregoing information.
Terms of sale or lease are subject to change or withdrawal without notice.

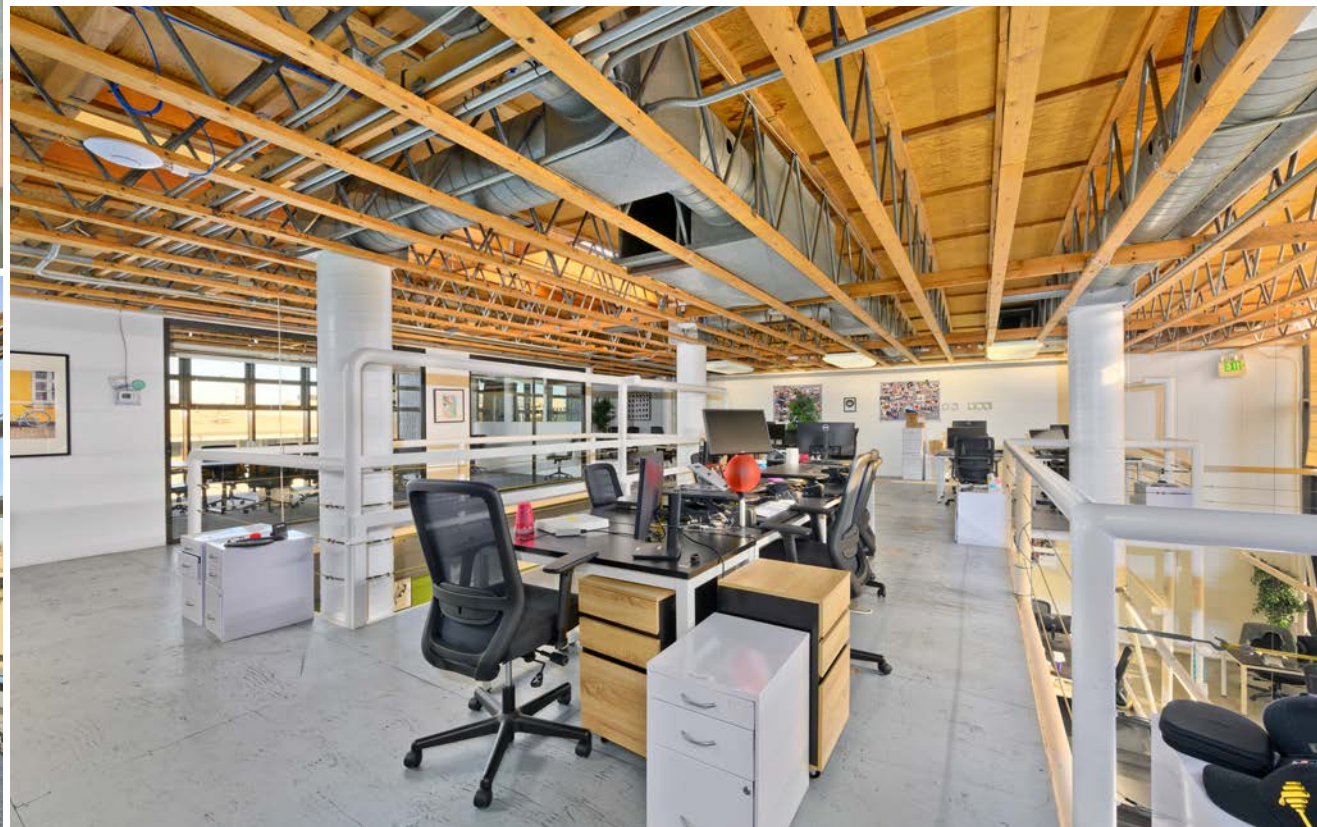
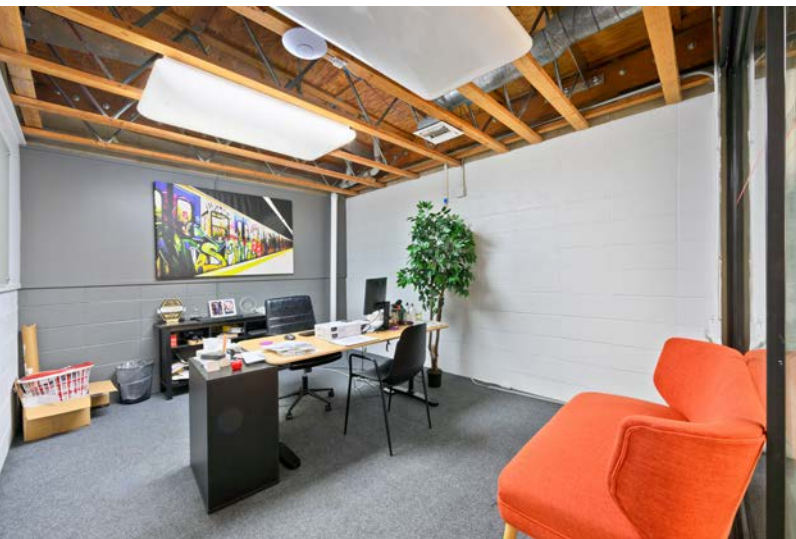
**2200 MICHIGAN AVENUE
SANTA MONICA, CA 90404**



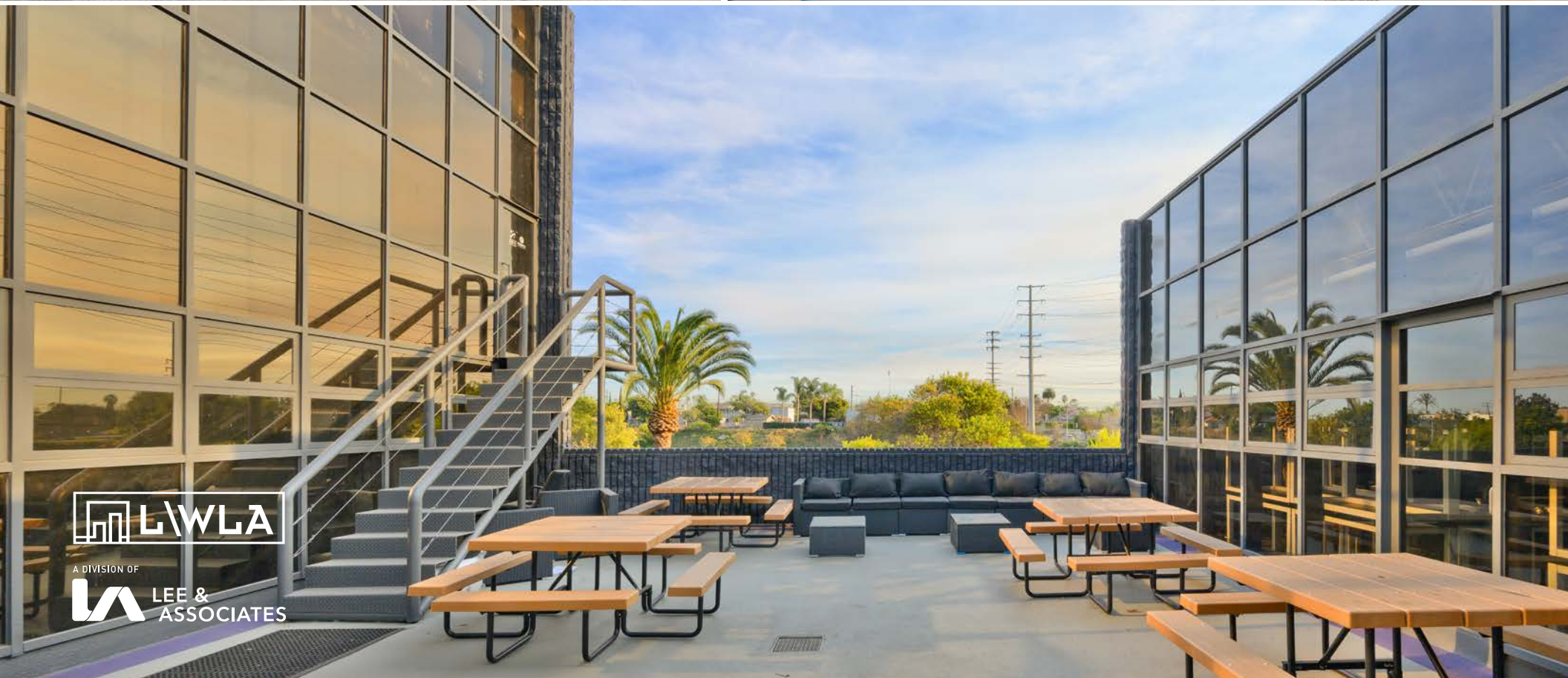
A DIVISION OF





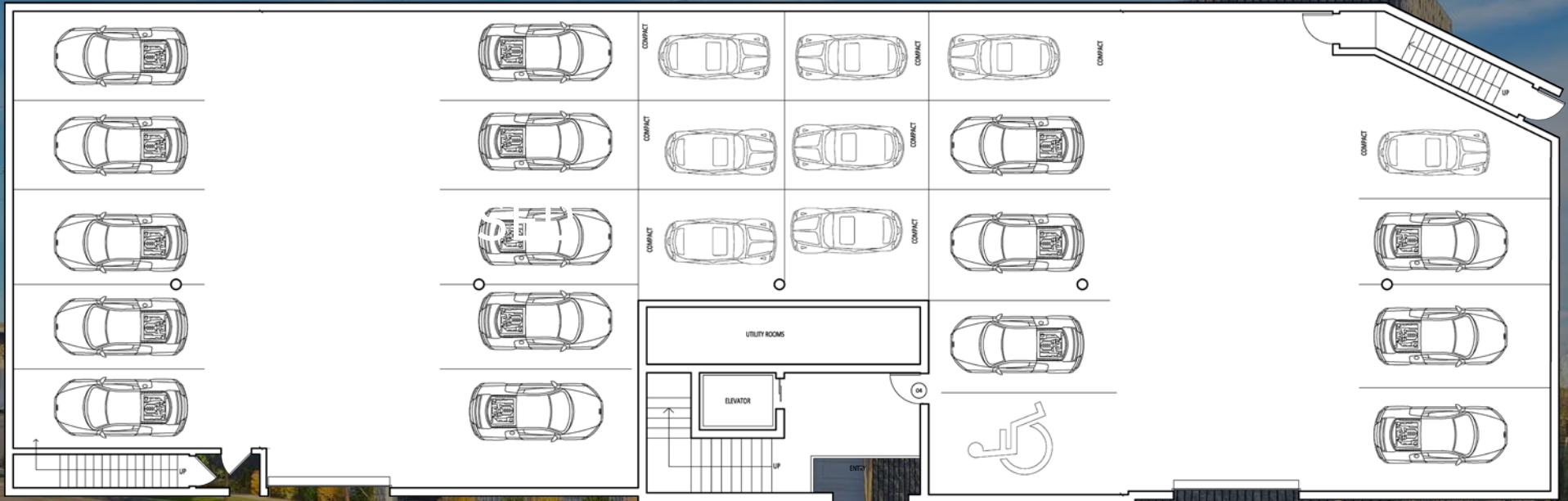


LWLA
A DIVISION OF
LEE & ASSOCIATES



FLOOR PLAN

GROUND FLOOR PARKING



A DIVISION OF



James Wilson
310.899.2708
jwilson@leewestla.com
AGT DRE 00883324

Dylan Mahood, CCIM
310.899.2706
dmahood@leewestla.com
AGT DRE 02027002

FLOOR PLAN

SECOND FLOOR



A DIVISION OF

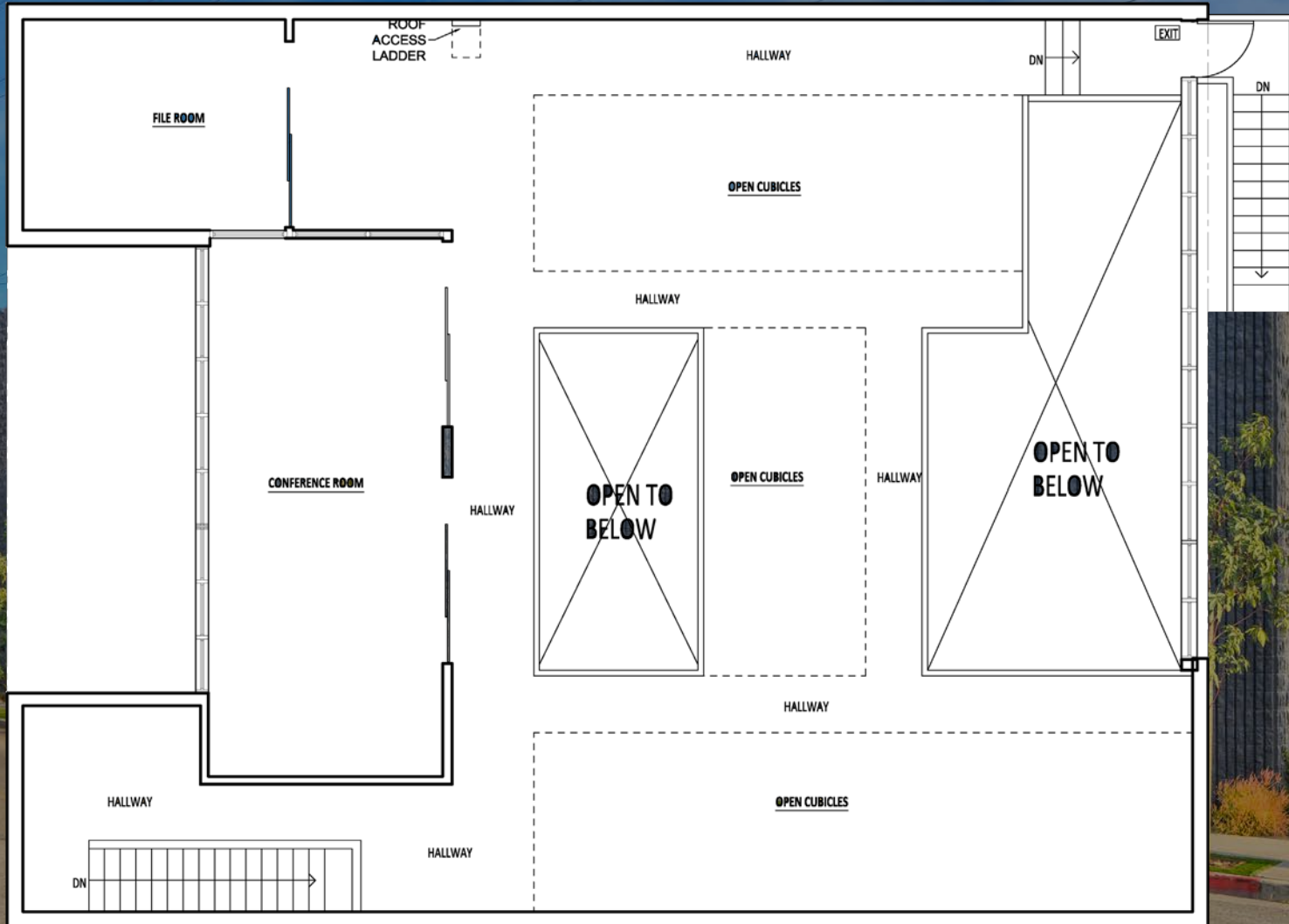


James Wilson
310.899.2708
jwilson@leewestla.com
AGT DRE 00883324

Dylan Mahood, CCIM
310.899.2706
dmahood@leewestla.com
AGT DRE 02027002

FLOOR PLAN

THIRD FLOOR MEZZANINE



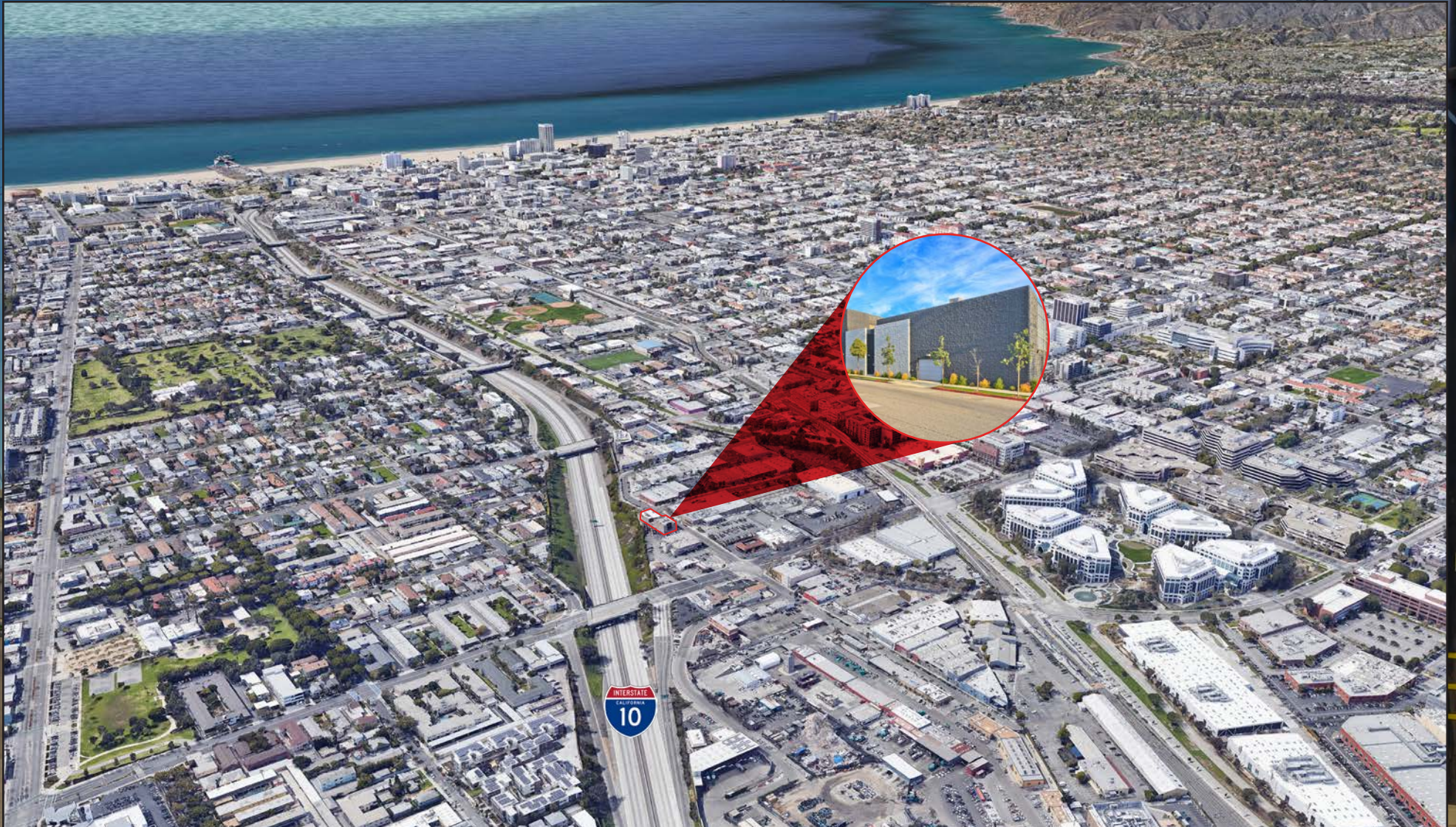
A DIVISION OF



James Wilson
310.899.2708
jwilson@leewestla.com
AGT DRE 00883324

Dylan Mahood, CCIM
310.899.2706
dmahood@leewestla.com
AGT DRE 02027002

LOCATION MAP



A DIVISION OF



James Wilson

310.899.2708

jwilson@leewestla.com

AGT DRE 00883324

Dylan Mahood, CCIM

310.899.2706

dmahood@leewestla.com

AGT DRE 02027002