



1330
4TH STREET
SANTA MONICA, CA 90401

Outstanding Downtown Santa Monica
Freestanding Creative Retail

Property Information

PREMISES



± 7,363 RSF

RENT



Negotiable

TERM



Negotiable

PARKING



Ample Parking
(On-Site and Neighborhood)

FEATURES

- Prime Location (Bayside District)
- Freestanding Art Deco Building
- Extremely Architectural Creative Space
- Soaring Ceiling Heights (approx. 18 feet)
- Open Plan with Kitchen, Restrooms, and Mezanine Offices
 - Retail & Gym Uses Permitted
 - Ample Parking



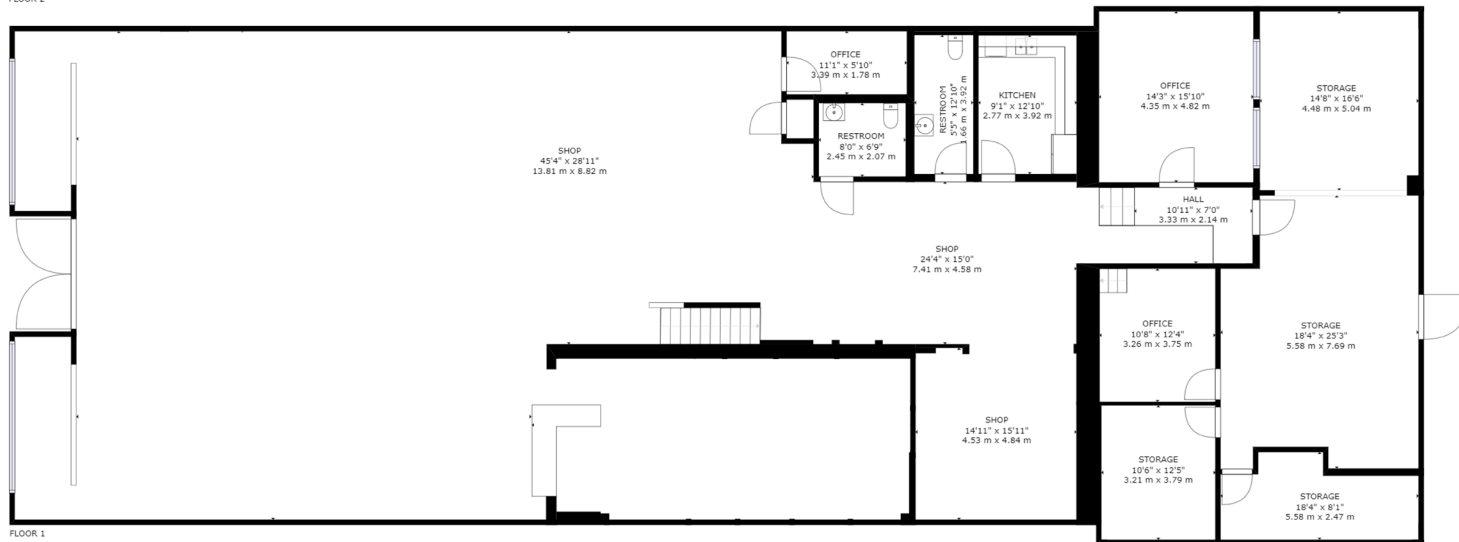
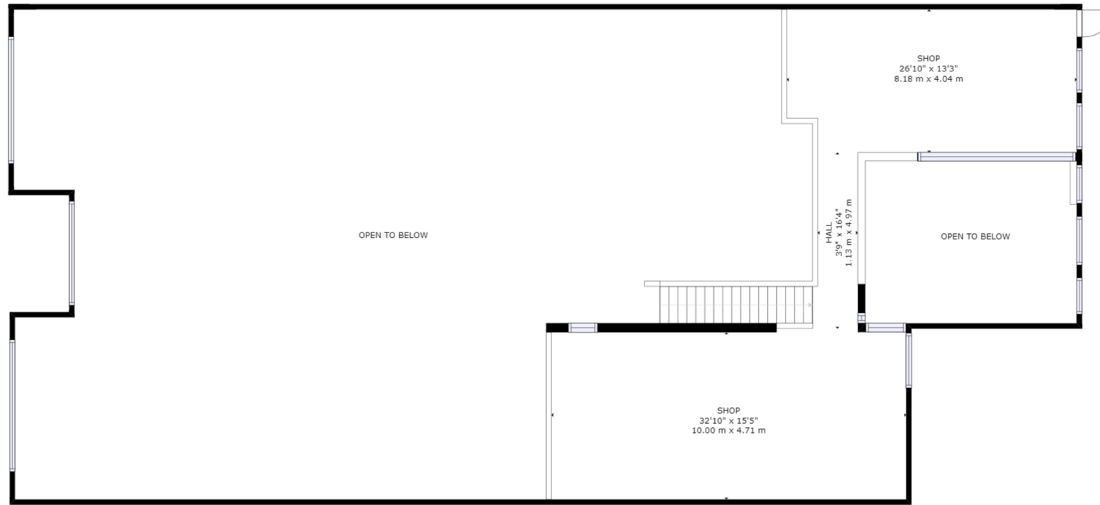
1330 4TH STREET
SANTA MONICA, CA 90401



1330 4TH STREET
SANTA MONICA, CA 90401

LWLA
A DIVISION OF
LEE & ASSOCIATES

Floor Plan



1330 Fourth Street Santa Monica, CA 90401

1330 4TH STREET
SANTA MONICA, CA 90401

Location Map



1330 4TH STREET
SANTA MONICA, CA 90401

Nearby Amenities



1. THIRD STREET PROMENADE

- APPLE
- REI
- ANTHROPOLOGIE
- PATAGONIA
- LULULEMON
- STARBUCKS
- TESLA
- ZARA
- LEMONADE
- ELEPHANTE
- SWEETGREEN
- JOHNNY ROCKET'S

2. SANTA MONICA PLACE

- BLOOMINGDALE'S
- BARNEY'S NEW YORK
- ALL SAINTS
- NORDSTROM
- PELATON
- LOUIS VUITTON
- NIKE
- HUGO BOSS
- MICHAEL KORS
- CHEESECAKE FACTORY
- TRUE FOOD KITCHEN
- STARBUCKS

3. SANTA MONICA PIER

4. DOWNTOWN SANTA MONICA METRO STATION

METRO LINE 

PUBLIC PARKING STRUCTURES 

1330 4TH STREET
SANTA MONICA, CA 90401



Andrew Wilson | Principal

310.899.2717
awilson@leewestla.com
AGT DRE 00921356



1330
4TH STREET
SANTA MONICA, CA 90401



1508 17th Street, Santa Monica, CA
310.899.2700
WWW.LEEWESTLA.COM | DRE 01222000

No warranty or representation is made to the accuracy of the foregoing information. Terms of sale or lease are subject to change or withdrawal without notice.