

# RESTAURANT AND CREATIVE OFFICE FOR LEASE



1600 LINCOLN BOULEVARD, SANTA MONICA, CA 90404



**PREMISES**

RESTAURANT: ± 5,001 SF  
 OFFICE: ± 5,605 SF

TOTAL  
 ± 10,606 SF

**RENT**

\$6.00/SF, NNN

**TERM**

5 - 10 Years

**OCCUPANCY**

Immediate

**PARKING**

17 Spaces @ \$175/space

**FEATURES**

- New Redevelopment
- Walking Distance to Trainstop
- Bayside Location
- Premium Restaurant Location

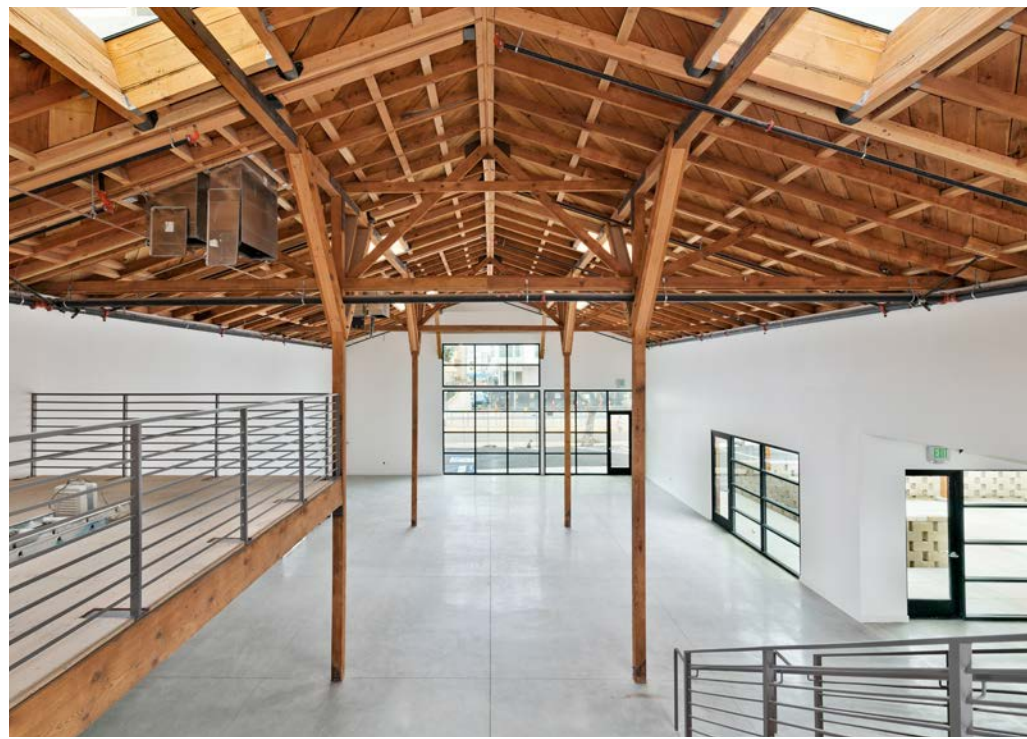
**CONTACT**

Aleks Trifunovic, SIOR  
 310.899.2721  
 atrifunovic@leewestla.com  
 BKR DRE 01363109

Tibor Lody, SIOR  
 310.899.2720  
 tlody@leewestla.com  
 AGT DRE 01261129

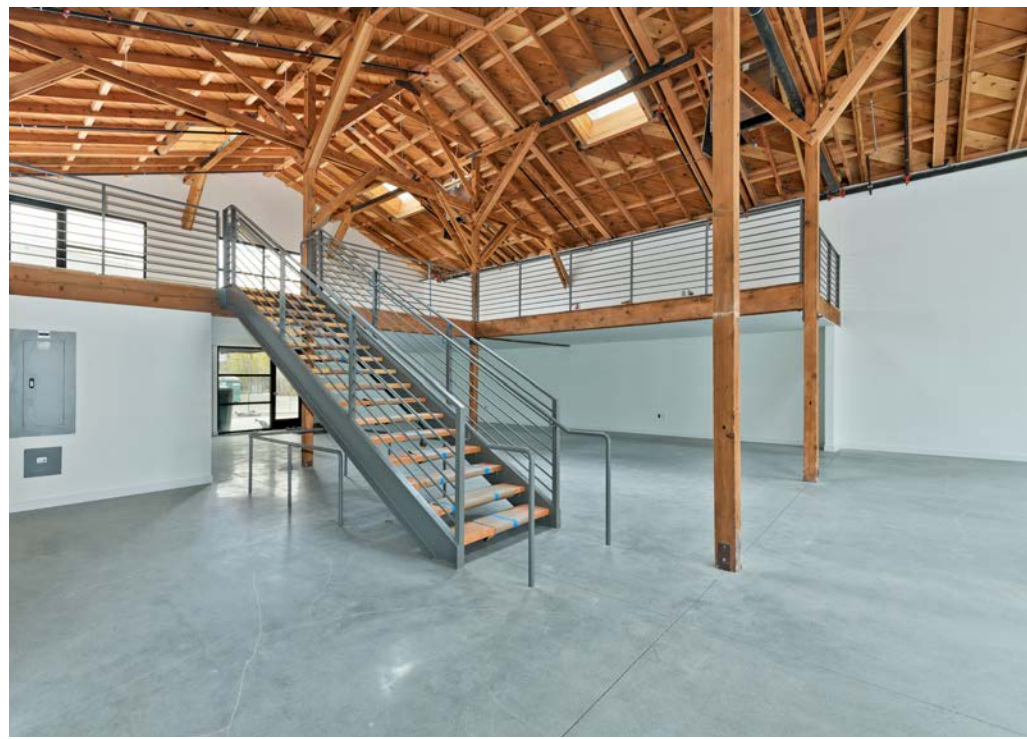
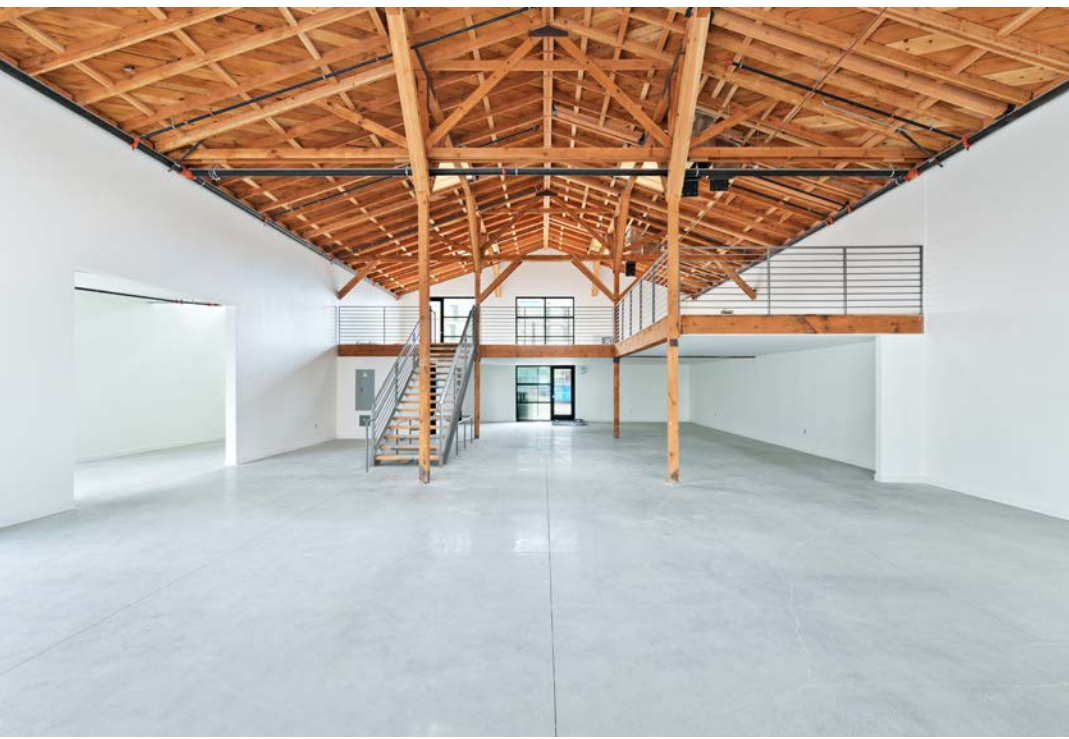
Keith Fielding  
 310.899.2719  
 kfielding@leewestla.com  
 AGT DRE 01729915

Tommy Isola  
 310.899.2709  
 tisola@leewestla.com  
 AGT DRE 01974024



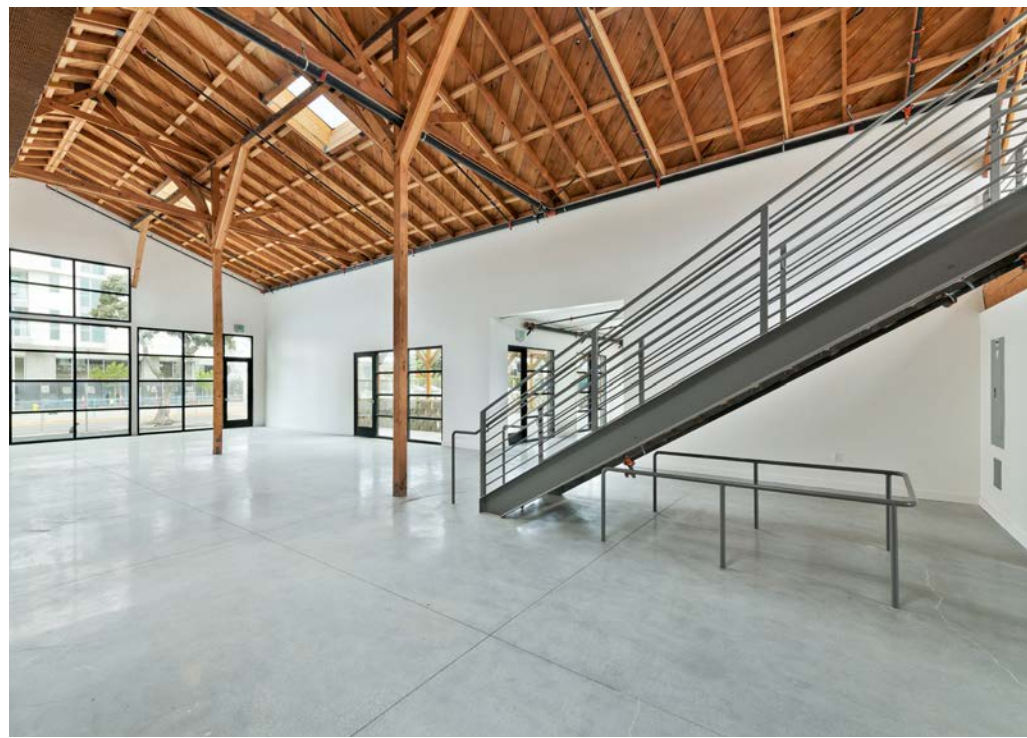
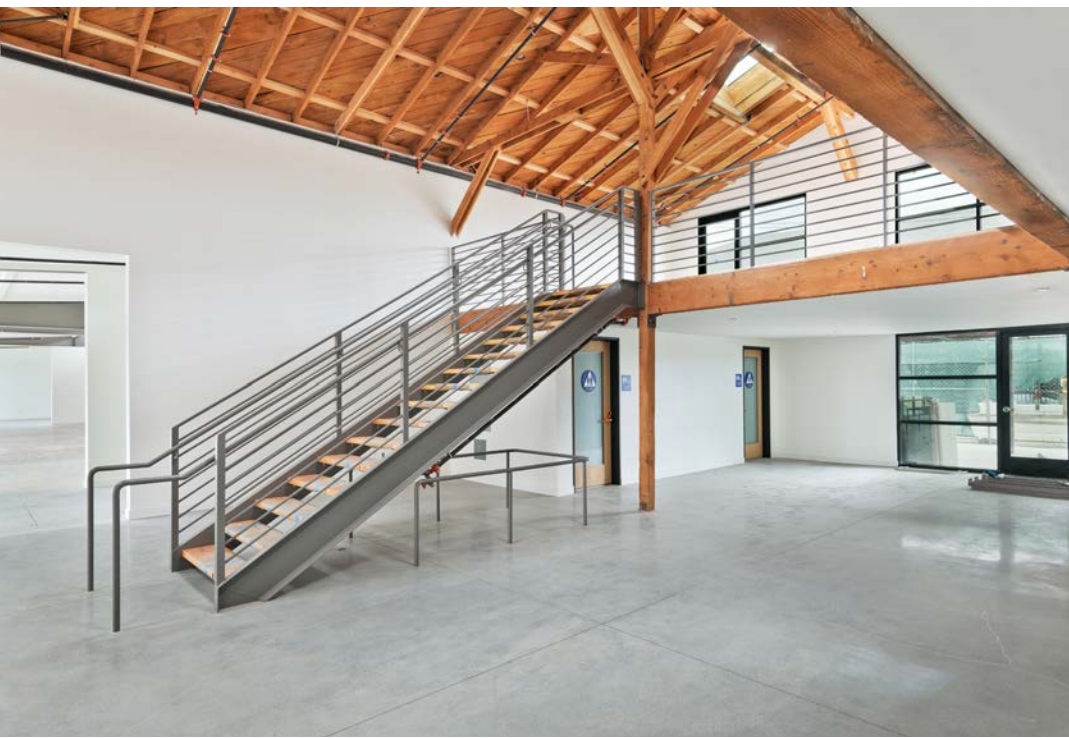
## INTERIOR PHOTOS





## INTERIOR PHOTOS





## INTERIOR PHOTOS





## EXTERIOR PHOTOS





## EXTERIOR PHOTOS



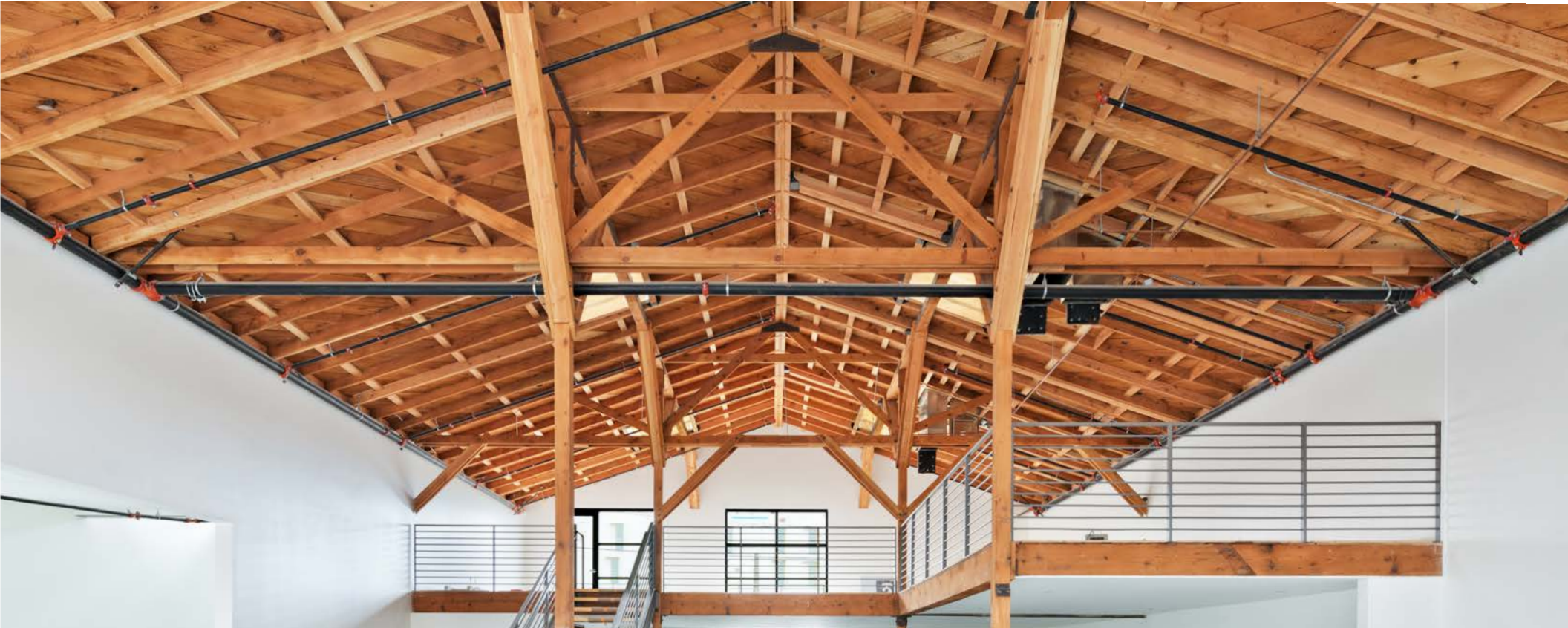
# FLOOR PLAN







- |                  |                        |                       |                                      |
|------------------|------------------------|-----------------------|--------------------------------------|
| 1. Philz Coffee  | 6. BOA Steakhouse      | 11. Santa Monica Pier | 16. Cassia                           |
| 2. Unami Burger  | 7. Water Grill         | 12. Mercado           | 17. Benny's Tacos & Chick Rotisserie |
| 3. Sweetgreen    | 8. Blue Daisy          | 13. Hillstone         | 18. Wexler's Deli                    |
| 4. P.F. Chang's  | 9. Del Frisco          | 14. Hotel Shangri-La  | 19. Sweetfin                         |
| 5. Tender Greens | 10. Santa Monica Place | 15. Sidecar Doughnuts | 20. Bay Cities Italian Deli & Bakery |



Aleks Trifunovic, SIOR  
President  
310.899.2721  
atrifunovic@leewestla.com  
BKR DRE 01363109

Tibor Lody, SIOR  
Principal  
310.899.2720  
tlody@leewestla.com  
AGT DRE 01261129

Keith Fielding  
Principal  
310.899.2719  
kfielding@leewestla.com  
AGT DRE 01729915

Tommy Isola  
Principal  
310.899.2709  
tisola@leewestla.com  
AGT DRE 01974024

A DIVISION OF



Lee & Associates Los Angeles West, Inc.  
1508 17th Street, Santa Monica, CA  
310.899.2700 www.leewestla.com | DRE 01222000

