



# FOR LEASE

3 SPACES FOR LEASE  
±2,570 and ±2,150 SF OF GROUND FLOOR RETAIL / WAREHOUSE /  
GALLERY / OFFICE SPACE  
±1,000 SF OF SECOND FLOOR OFFICE SPACE  
IN THE CULVER CITY ARTS DISTRICT

2728-2740 S LA CIENEGA BLVD  
LOS ANGELES, CA 90034



# EXECUTIVE SUMMARY

	2728 S LA CIENEGA BLVD	2736 S LA CIENEGA BLVD	2740 S LA CIENEGA BLVD
<b>ASKING RENT:</b>	\$2.60 / SF (Modified Gross)	\$2.75 / SF (Modified Gross)	\$2.50 / SF (Modified Gross)
<b>AVAILABLE SF:</b>	±2,570 SF	±2,150 SF	±1,000 SF
<b>SPACE TYPE:</b>	Office / Gallery / Retail	Office / Gallery / Retail	Office
<b>OCCUPANCY:</b>	Immediate	Immediate	Immediate
<b>PARKING:</b>	6 Spaces (Tandem)	4 Spaces (Tandem)	Spaces (Tandem)
<b>ZONING:</b>	CM-1VL (Hybrid Industrial)	CM-1VL (Hybrid Industrial)	CM-1VL (Hybrid Industrial)
<b>ROLLUP:</b>	Yes (in Alley)	Yes (in Alley)	No
<b>LOCATION:</b>	Ground Floor	Ground Floor	Second Floor

## PROPERTY HIGHLIGHTS

- Located in Culver City Arts District
- South of Venice Blvd and North of Washington Blvd
- Excellent access to both the 10 and 405 Freeways
- Close proximity to the Metro Rail Station
- Walkscore of 86 (Very Walkable)
- Good parking

## 2728 S LA CIENEGA BLVD

Consists of three wood-panel offices, conference room, central hallway, storage rooms, bathroom, kitchenette, storage rooms, and loading door in the rear of the property.

## 2736 S LA CIENEGA BLVD

Consists of open space with two sectioned areas in the front, bathroom, commercial sink, storage area in the rear, and loading area.

## 2740 S LA CIENEGA BLVD

Second floor office space with large office, two smaller offices, reception area, bathroom/kitchen, and patio.

**Paul Brehme**  
Principal  
310-899-2755  
pbrehme@leewestla.com  
DRE# 01476686

Lee & Associates | Los Angeles West, Inc.  
1508 17<sup>th</sup> St. Santa Monica, CA 90404  
310-899-2700  
www.leewestla.com  
DRE# 01222000

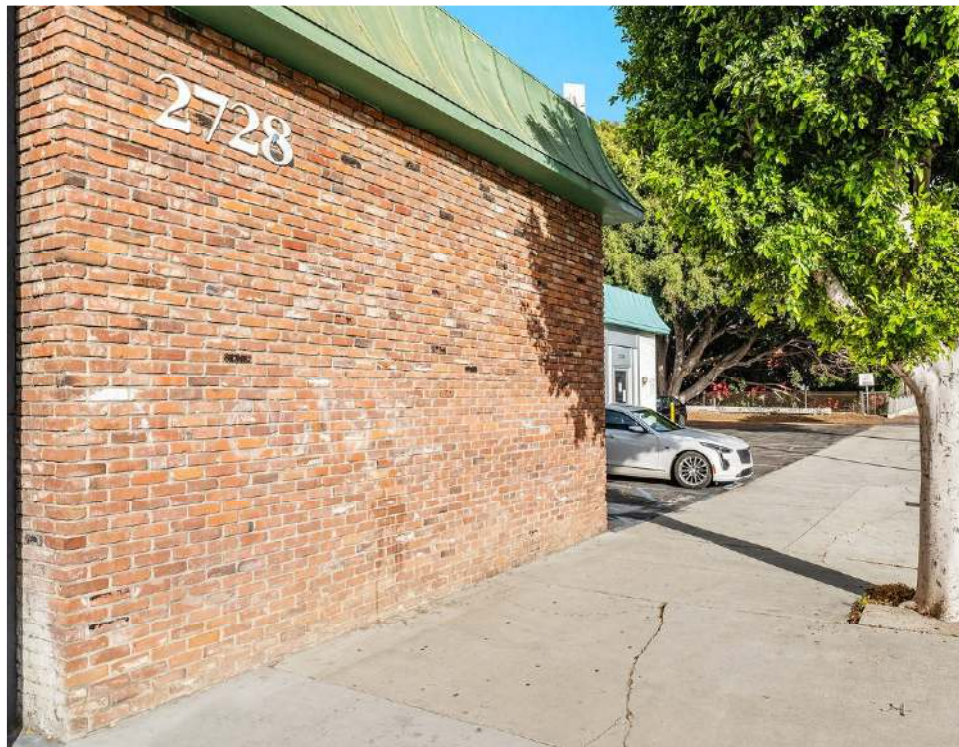
**Greg Batiste**  
Executive Vice President  
310-966-4343  
batiste@westmac.com  
DRE# 01071488

WESTMAC Commercial Brokerage Co.  
1515 S Sepulveda Blvd, Los Angeles, CA 90025  
310-478-7700  
www.westmac.com  
DRE# 01096973

No warranty or representation is made to the accuracy of the foregoing information. Terms of sale or lease are subject to change or withdrawal without notice.











A DIVISION OF  
**LEE & ASSOCIATES**

**WESTMAC**  
Commercial Brokerage Company

**2728 LA CIENEGA**





A DIVISION OF  
**LEE & ASSOCIATES**

**WESTMAC**  
Commercial Brokerage Company

**2728 LA CIENEGA**





A DIVISION OF  
**LEE & ASSOCIATES**

**WESTMAC**  
Commercial Brokerage Company

**2736 LA CIENEGA**

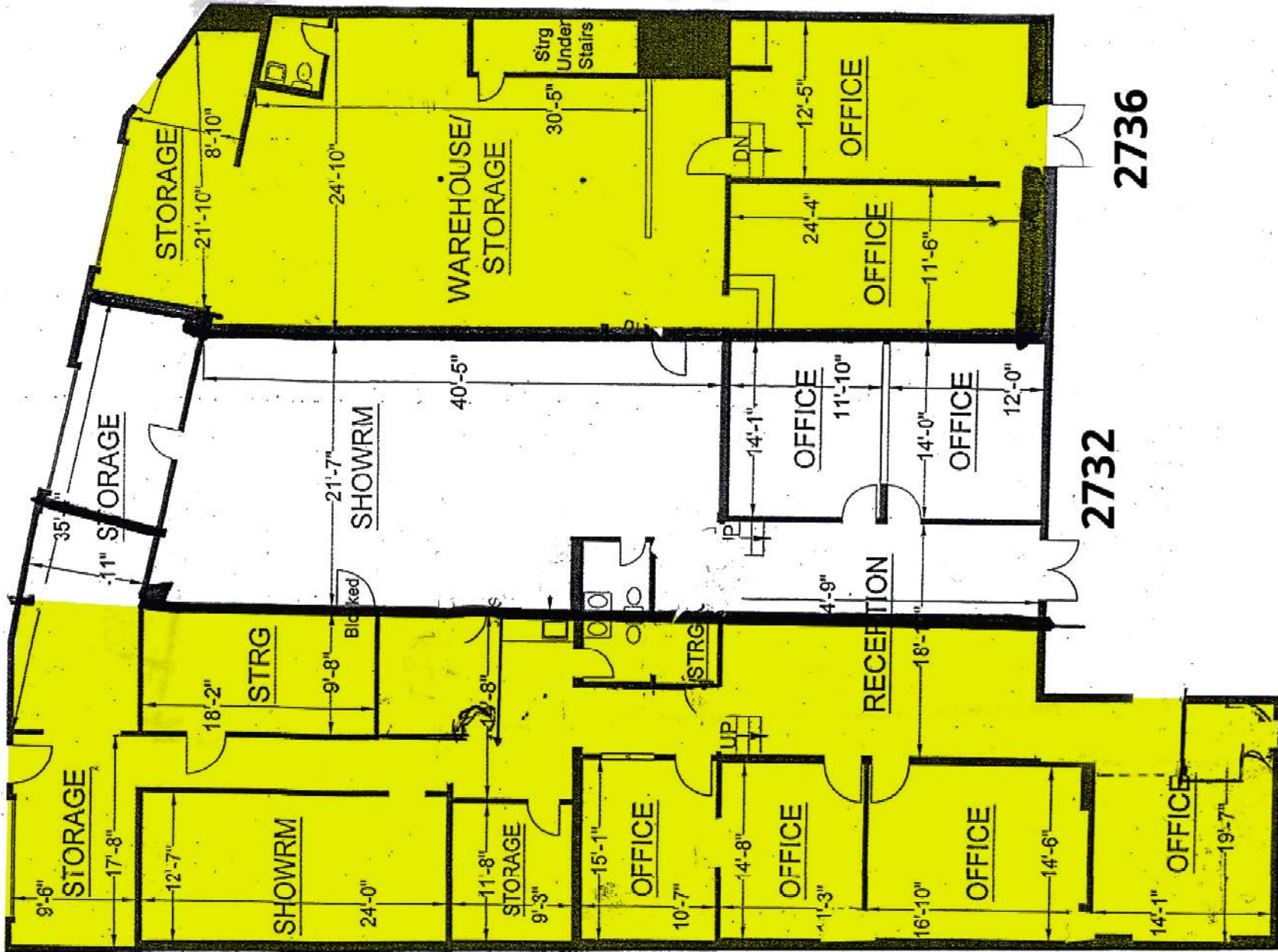




A DIVISION OF  
**LEE & ASSOCIATES**

**WESTMAC**  
Commercial Brokerage Company

**2740 LA CIENEGA**



Assumed Wall Thickness



A DIVISION OF  
**LEE & ASSOCIATES**

**WESTMAC**  
 Commercial Brokerage Company

**FLOORPLAN**





2728 S LA CIENEGA BLVD

2740 S LA CIENEGA BLVD

2736 S LA CIENEGA BLVD

LA CIENEGA BLVD



A DIVISION OF  
**LEE & ASSOCIATES**

**WESTMAC**  
Commercial Brokerage Company

**AERIAL**



