

5301 BEETHOVEN STREET

LOS ANGELES, CA 90066



A DIVISION OF

**LEE &
ASSOCIATES**

FOR LEASE



FEATURES

- Offices With Open Floor Plans
- Ample Parking
- Central Location
- Close Proximity to an Abundance of Shopping and Dining
- One Mile from the 405 Freeway



No warranty or representation is made to the accuracy of the foregoing information. Terms of sale or lease are subject to change or withdrawal without notice.

PREMISES

Suite 120 \pm 1,091 SF
Suite 208 \pm 1,556 SF
Suite 230 \pm 2,985 SF

RENT

\$1.95/SF, FSG

TERM

3 - 5 Years

OCCUPANCY

Immediate

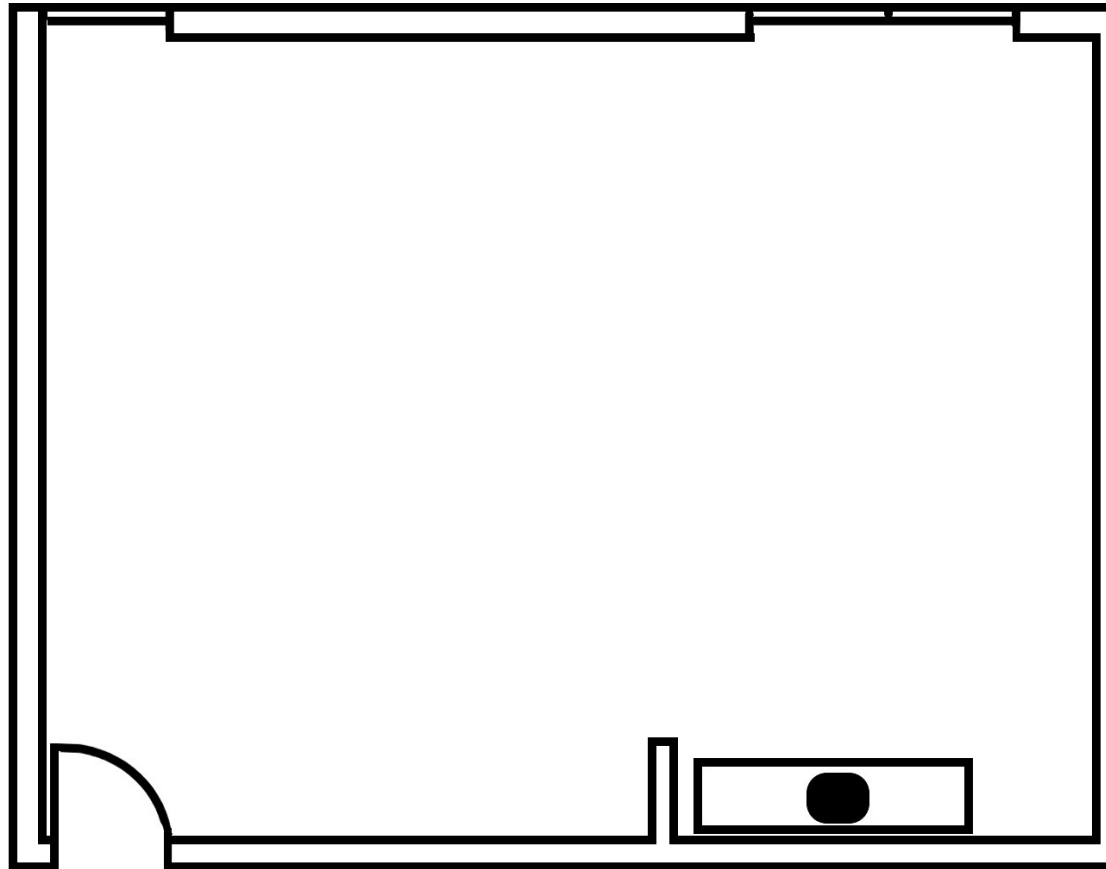
PARKING

Free 3/1,000



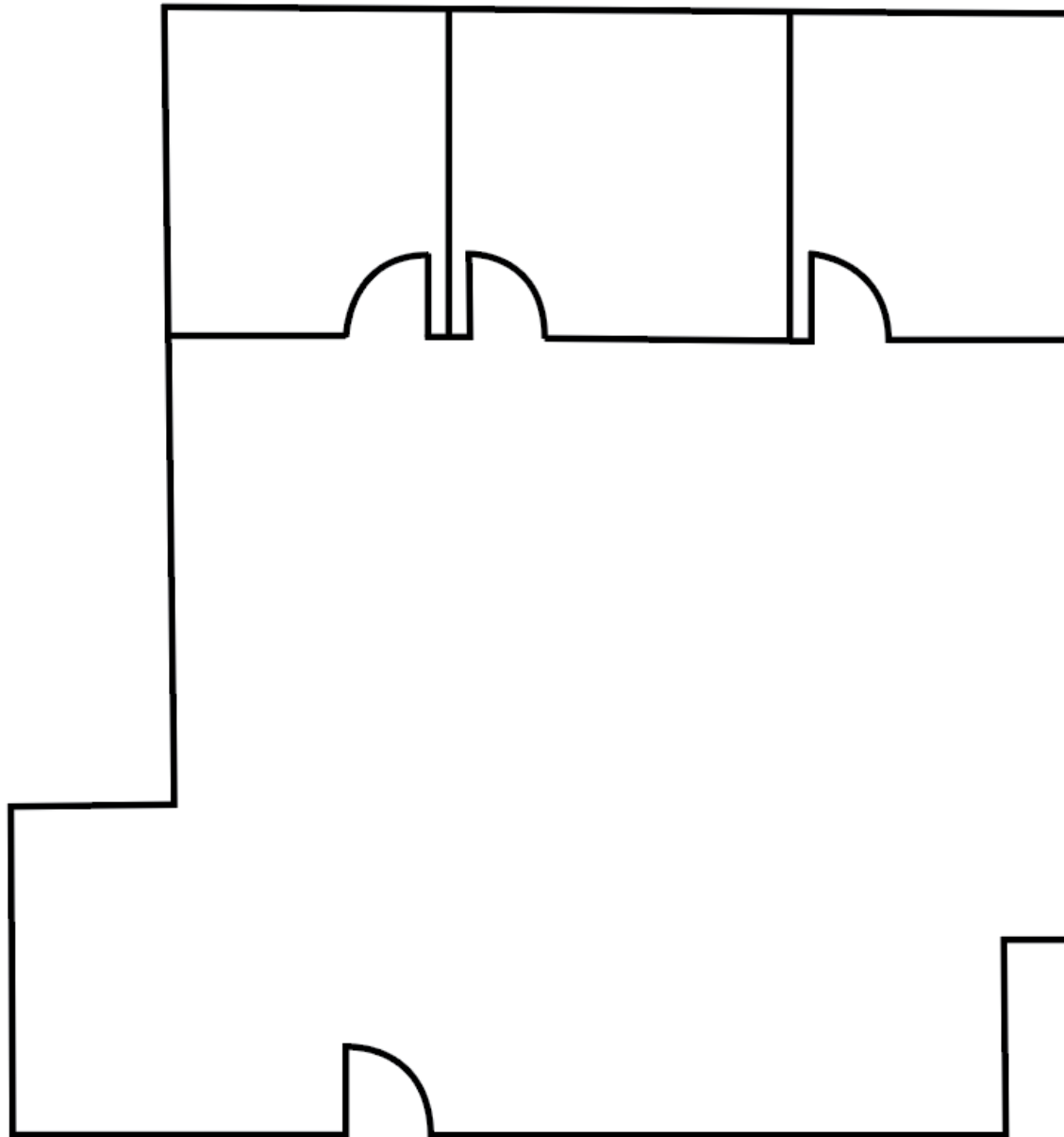
FLOOR PLAN

SUITE 120
± 1,091 SF



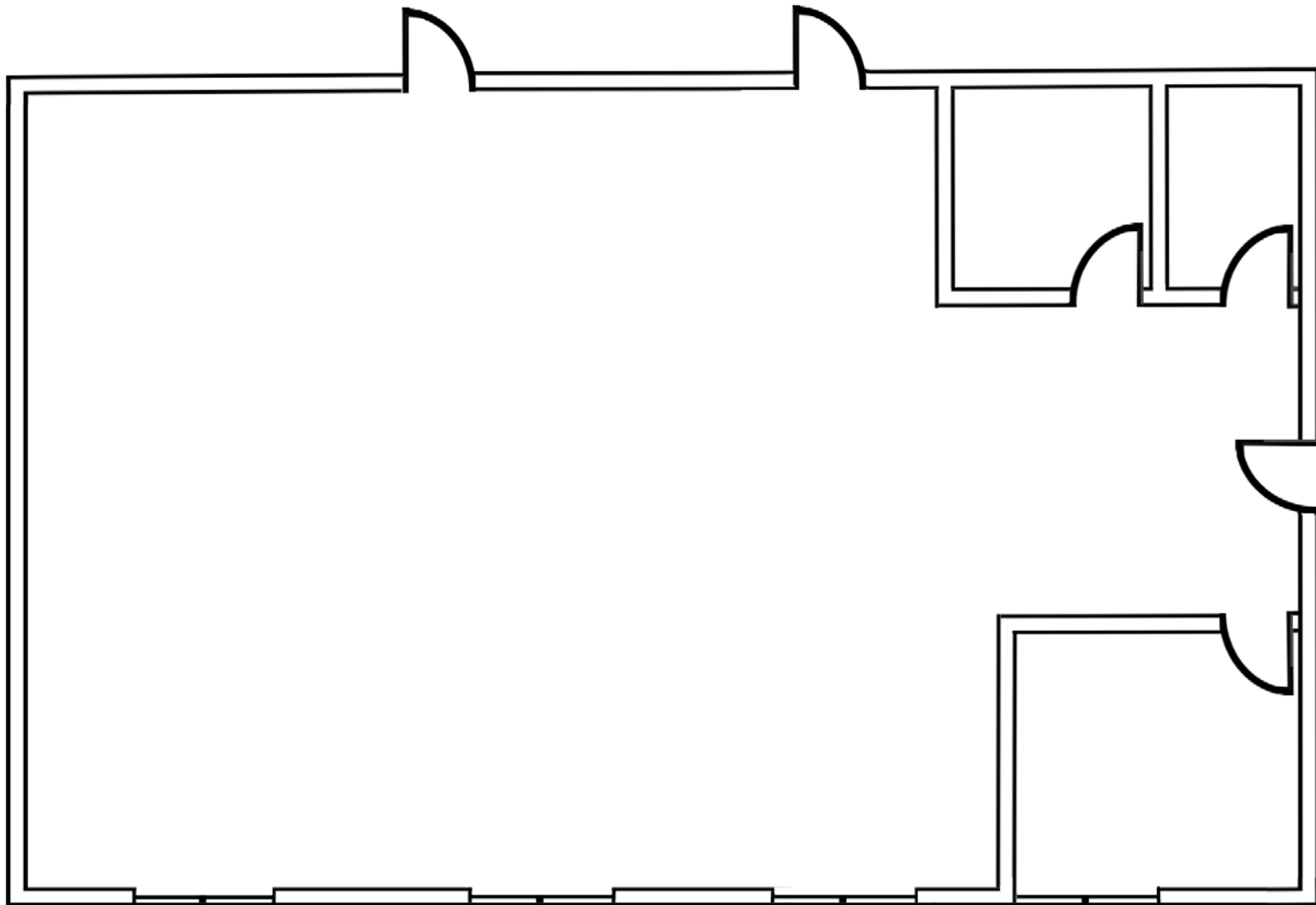
FLOOR PLAN

SUITE 208
± 1,556 SF

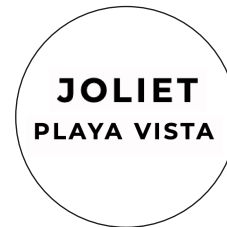


FLOOR PLAN

SUITE 230
± 2,985 SF



AREA AMENITIES



NOTABLE TENANTS IN THE AREA



CONTACTS

DYLAN MAHOOD, CCIM

310.899.2706
dmahood@leewestla.com
AGT DRE 02027002

JAMES WILSON

310.899.2708
jwilson@leewestla.com
AGT DRE 00883324

Lee & Associates Los Angeles West, Inc.
1508 17th Street, Santa Monica, CA 90404
www.leewestla.com | DRE 01222000



A DIVISION OF



**LEE &
ASSOCIATES**