



CREATIVE OFFICE FOR LEASE

3767 OVERLAND AVENUE #101, #110, #111
LOS ANGELES, CA 90034

PREMISES Suite 101 ± 1,556 SF
Suite 110 ± 1,348 SF
Suite 111 ± 1,455 SF

RENT \$3.65/ SF MG

OCCUPANCY 30 Days

PARKING Suite 101: 2 Spaces @ \$150/Space/Month
Suite 110: 3 Spaces @ \$150/Space/Month
Suite 111: 3 Spaces @ \$150/Space/Month

FEATURES - Operable Windows and Glass Roll-up Door
- Creative Loft
- Across from Coffee Bean & LA Fitness
- Central Location

CONTACT **Douglas R. Marshall, SIOR**
310.899.2745
dmarshall@leewestla.com
AGT DRE 00869275

Gage Danley
310.899.2749
gdanley@leewestla.com
AGT DRE 02075191

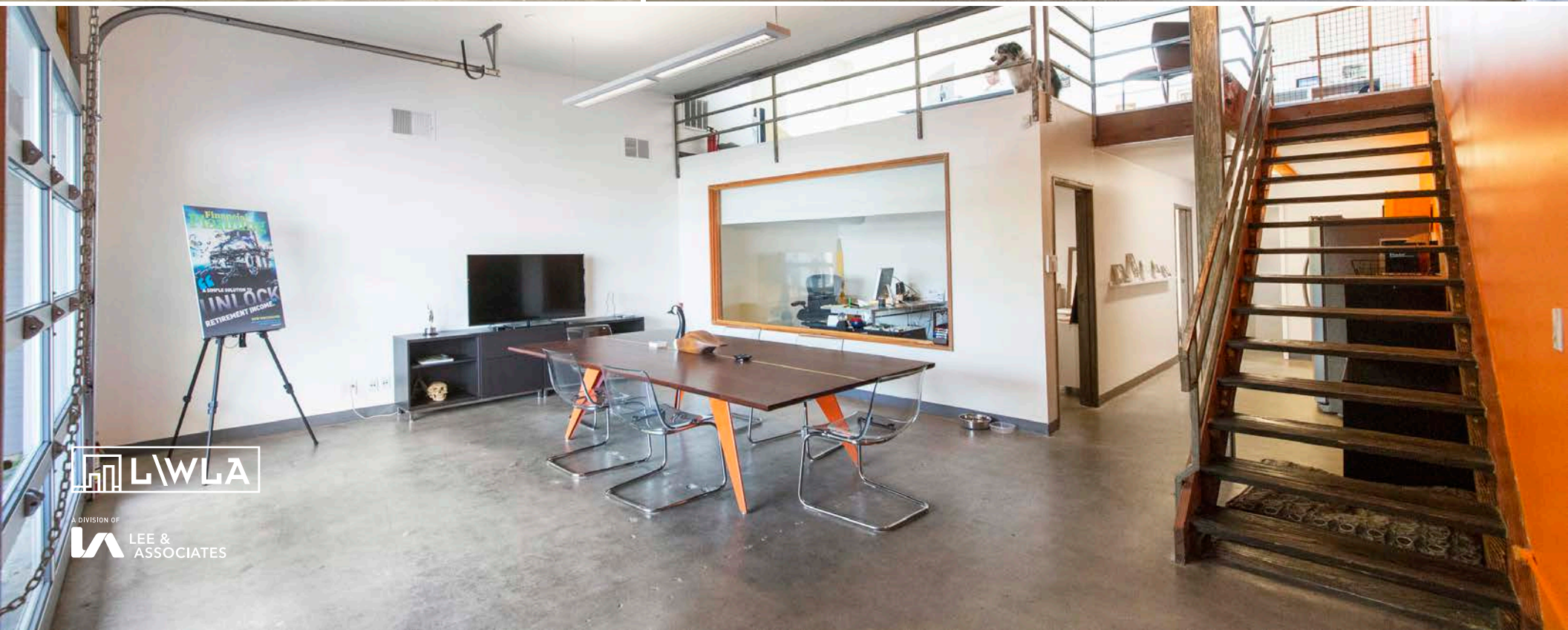


1508 17th Street, Santa Monica, CA | 310.899.2700
WWW.LEEWESTLA.COM | DRE 01222000

No warranty or representation is made to the accuracy of the foregoing information. Terms of sale or lease are subject to change or withdrawal without notice.

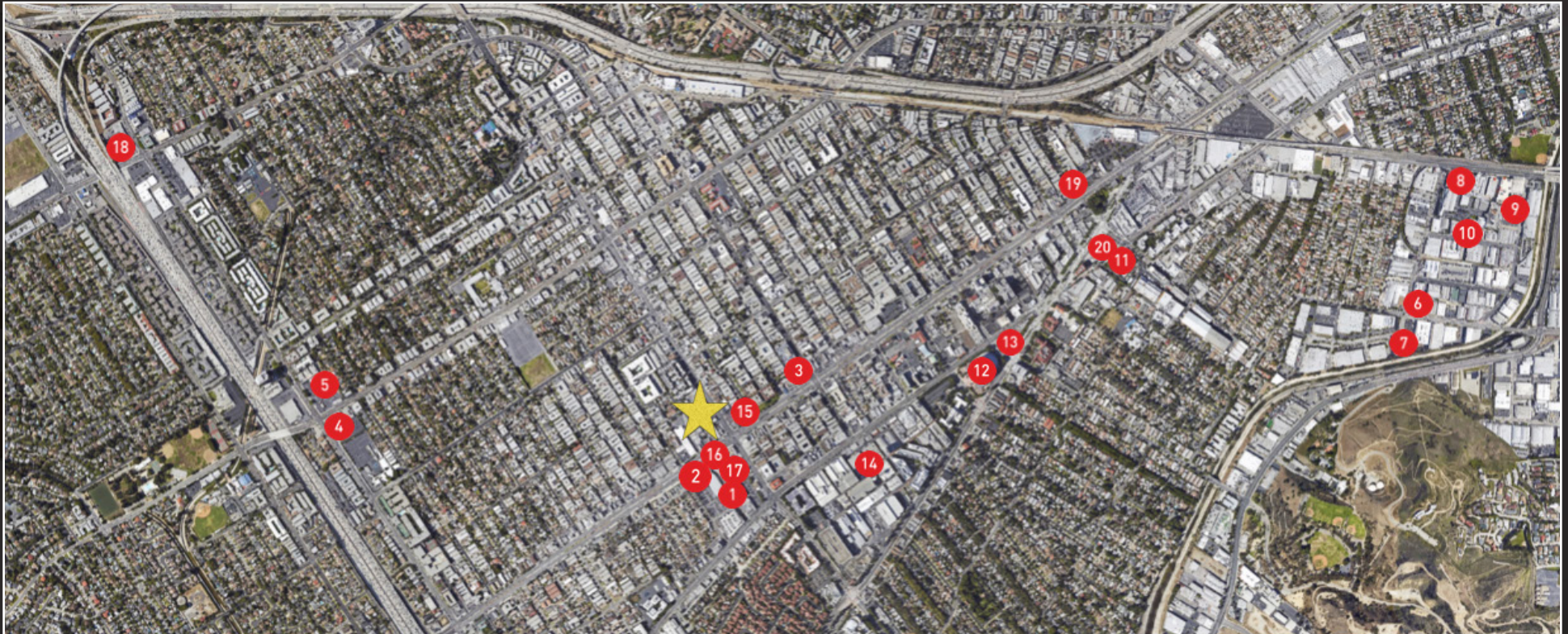
3767 OVERLAND AVENUE #101, #110, #111
LOS ANGELES, CA 90034

NOT ACTUAL UNIT



A DIVISION OF
LEE &
ASSOCIATES

AREA MAP



- | | | | |
|------------------|-------------------------|--------------------------|------------------------------|
| 1. LA Fitness | 6. Smashbox Studios | 11. Culver Studios | 16. California Pizza Kitchen |
| 2. Panda Express | 7. Beats by Dre | 12. Sony Picture Tours | 17. Smashburger |
| 3. Coffee Bean | 8. Big Picture Studios | 13. Kirk Douglas Theatre | 18. The Habit |
| 4. Burger King | 9. POPSUGAR Inc. | 14. Sony Studio | 19. In N Out |
| 5. Trader Joe's | 10. Fourth Wall Studios | 15. McDonalds | 20. Tender Greens |



A DIVISION OF
LEE & ASSOCIATES

Douglas R. Marshall, SIOR
310.899.2745
dmarshall@leewestla.com
AGT DRE 00869275

Gage Danley
310.899.2749
gdanley@leewestla.com
AGT DRE 02075191