



**SANTA MONICA
CREATIVE OFFICE FOR LEASE**

1505 4TH ST. SANTA MONICA, CA 90401

PREMISES Suite 200 ± 795 SF
Suite 300 ± 2,100 SF

RENT Suite 200: Negotiable
Suite 300: \$4.95 MG (Inclusive of Electric)

OCCUPANCY Immediate

TERM 3 - 5 Years

PARKING Off Site at Prevailing Rates
(Santa Monica Lot, Double Tree Hotel)

FEATURES

- Operable Windows
- Great Mix of Open Space & Offices
- One Block from the 4th St. Metro Stop
- High Ceilings & Hardwood Flooring
- Private Bathroom
- Built in Desks
- Plenty of Natural Light

CONTACT Spencer Horak
Principal
310.899.2728
shorak@leewestla.com
AGT DRE 01921906



A DIVISION OF



LEE &
ASSOCIATES

1508 17th Street, Santa Monica, CA | 310.899.2700

WWW.LEEWESTLA.COM | DRE 01222000

No warranty or representation is made to the accuracy of the foregoing information. Terms of sale or lease are subject to change or withdrawal without notice.

**1505 4TH STREET
SANTA MONICA, CA 90401**

SUITE 200



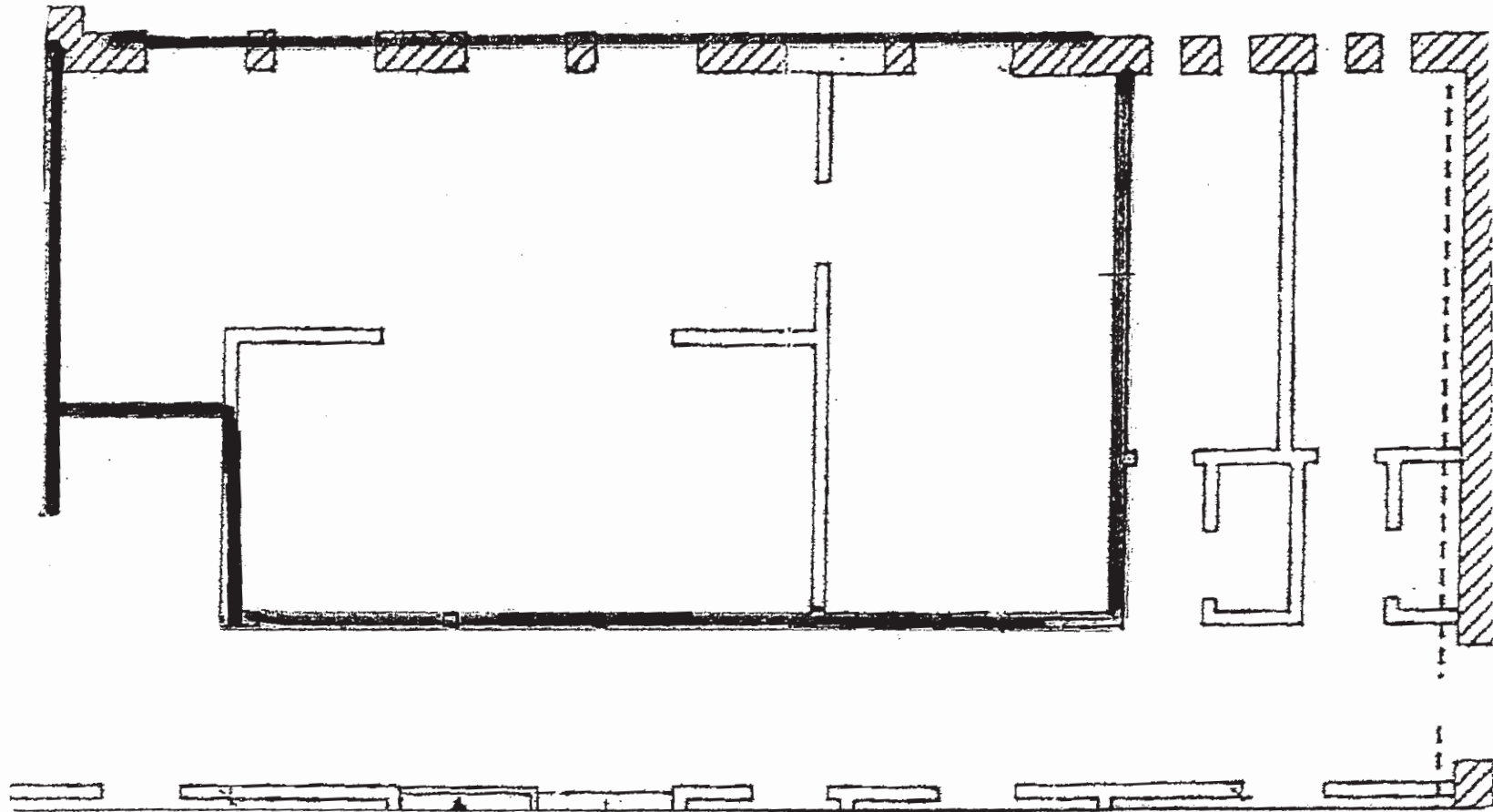
A DIVISION OF

**LEE &
ASSOCIATES**

SUITE 300



SUITE 200 FLOOR PLAN



A DIVISION OF

**LEE &
ASSOCIATES**

Spencer Horak - Principal

310.899.2728

shorak@leewestla.com

DRE 01921906