

**REDUCED RATE
\$2.25 NNN**



**1757 STANFORD STREET
SANTA MONICA, CA 90404**

PREMISES

± 47,249 SF Total
Ground Floor ± 33,250 SF Warehouse &
± 7,000 SF Warehouse/Shipping Office
Second Floor ± 6,999 SF Office

RENT

\$2.25 NNN (.10 PSF Taxes and Insurance)

TERM

3 - 5 Years

OCCUPANCY

March 2024

PARKING

On-site Parking Available
Off-site Parking Lot Available at Prevailing Monthly Rates

FEATURES

- Last True Large Industrial Space Available in Santa Monica/West LA
- Large Streetfront Signage Opportunity
- Two Loading Docks, Eleven Ground Level Roll Up Doors and 16' High Ceilings
- Private, Built-out Restrooms
- Rack System Available
- Located Within Walking Distance to Bergamot Station Amenities and the Expo Line Rail Station
- Easy Access to the 10 Freeway via Cloverfield

CONTACT

Keith Fielding

310.899.2719

kfielding@leewestla.com

AGT DRE 01729915

Tibor Lody, SIOR

310.899.2720

tlody@leewestla.com

AGT DRE 01261129

Adam Levine

310.899.2703

alevine@leewestla.com

AGT DRE 02104830

Aleks Trifunovic, SIOR

310.899.2721

atrifunovic@leewestla.com

BKR DRE 013631095

Tommy Isola

310.899.2709

tisola@leewestla.com

AGT DRE 01974024



A DIVISION OF



LEE & ASSOCIATES

1508 17th Street, Santa Monica, CA | 310.899.2700

WWW.LEEWESTLA.COM | DRE 01222000

No warranty or representation is made to the accuracy of the foregoing information. Terms of sale or lease are subject to change or withdrawal without notice.



**1757 STANFORD STREET
SANTA MONICA, CA 90404**



MAX LOAD
CAPACITY
PER LEVEL
2000 LBS

MAX LOAD
CAPACITY
PER LEVEL
2000 LBS

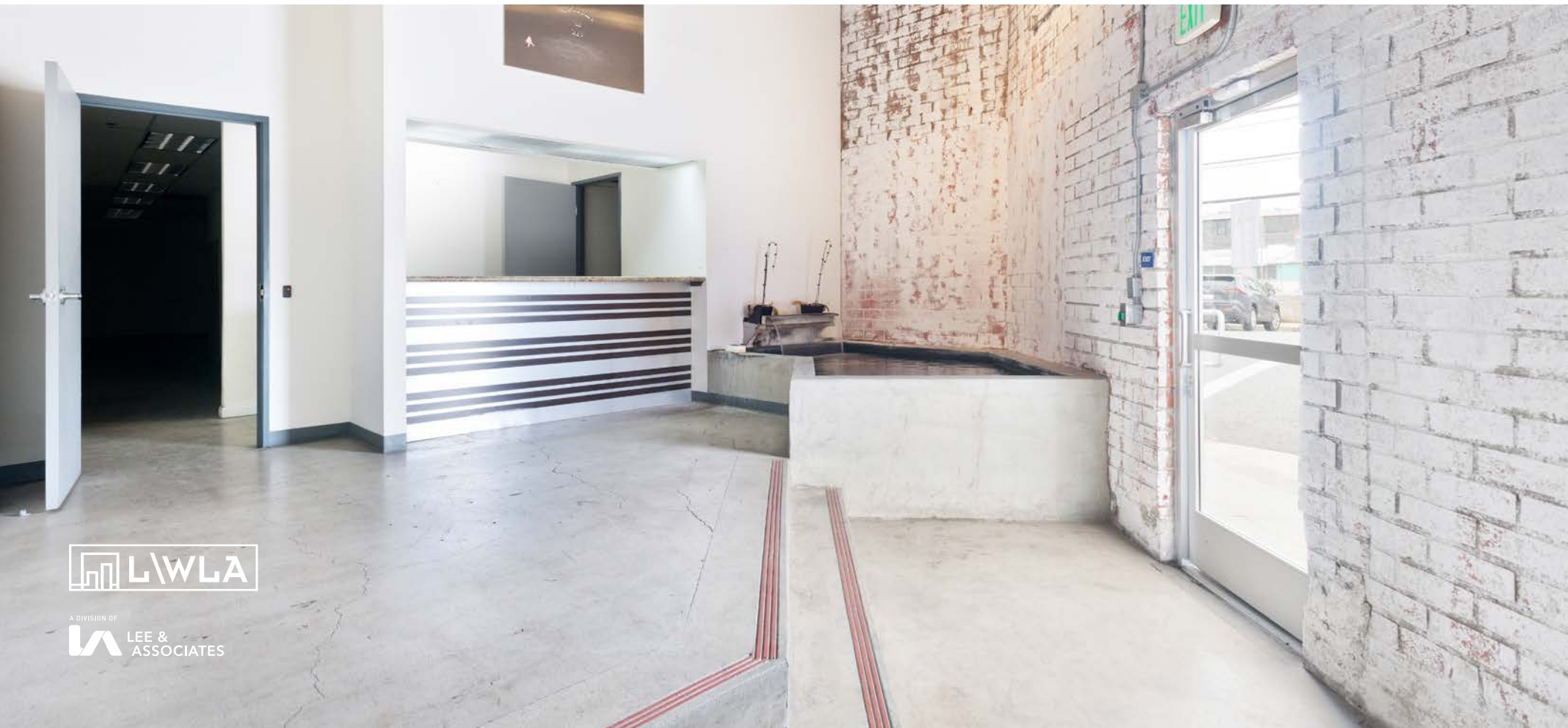


A DIVISION OF
LEE & ASSOCIATES



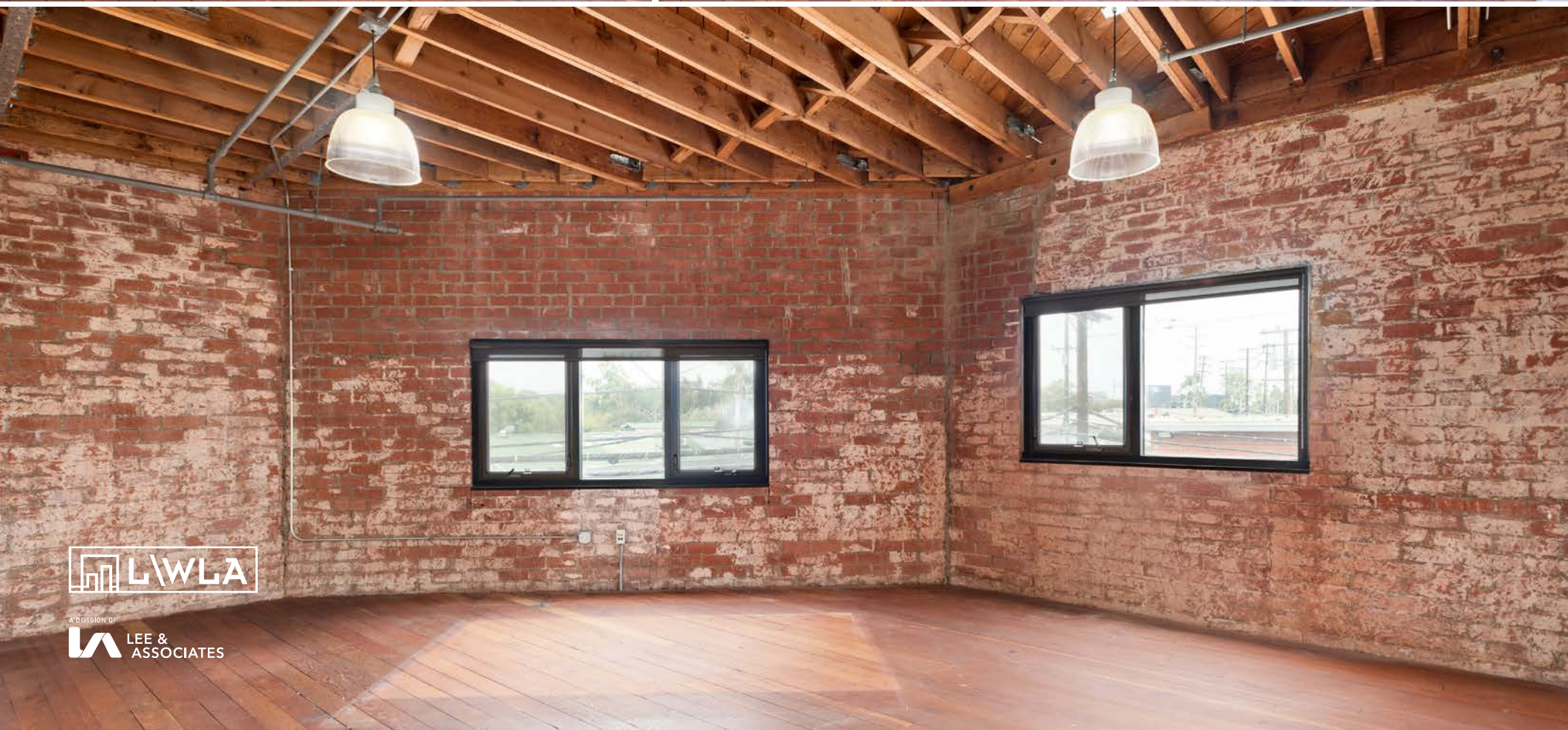
LWLA

A DIVISION OF
LEE & ASSOCIATES



LWLA

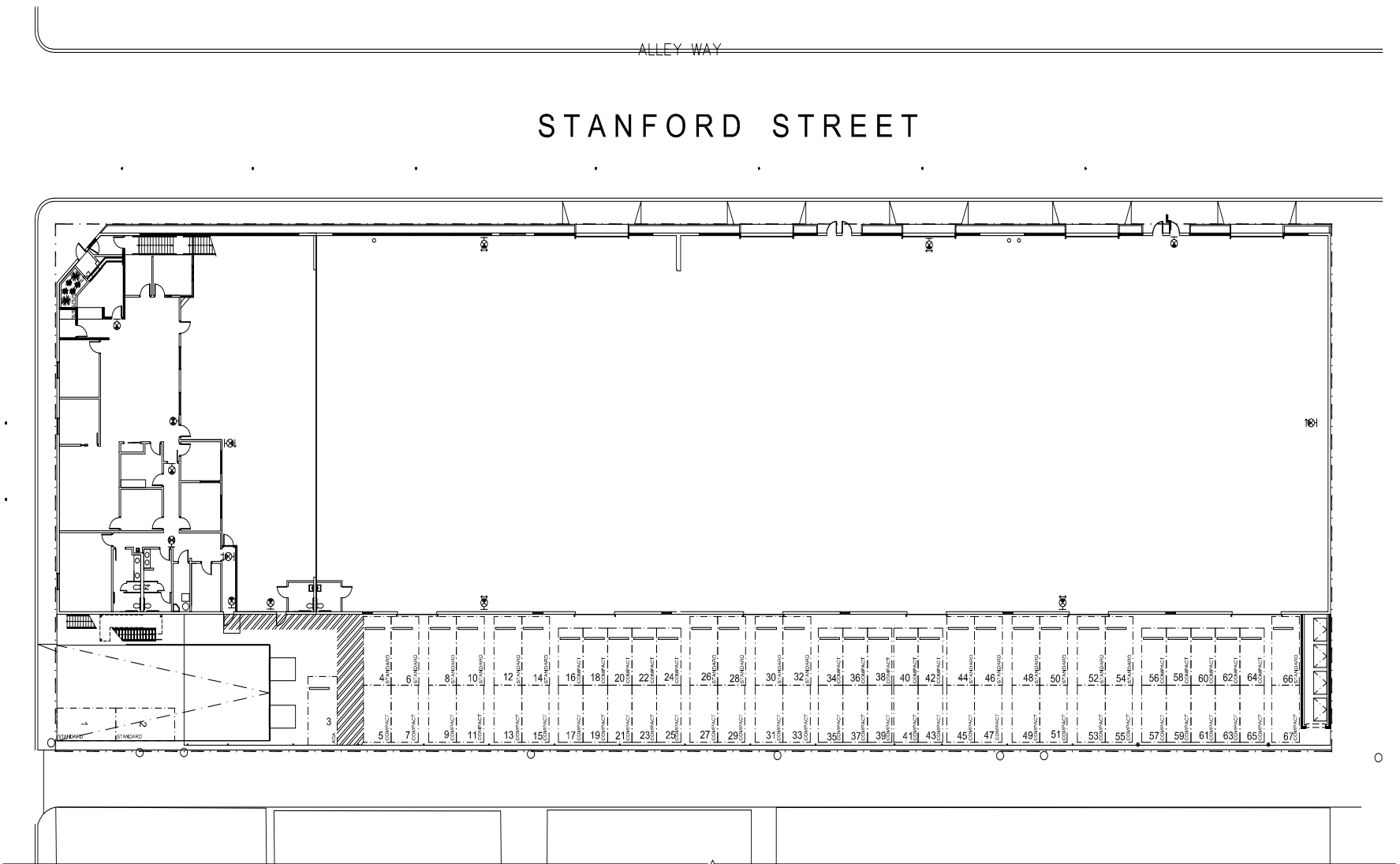
A DIVISION OF
LEE & ASSOCIATES



LWLA

A DIVISION OF
LEE &
ASSOCIATES

FIRST FLOOR PLAN



A DIVISION OF
LEE & ASSOCIATES

Keith Fielding

310.899.2719

kfielding@leewestla.com

AGT DRE 01729915

Aleks Trifunovic, SIOR

310.899.2721

atrifunovic@leewestla.com

BKR DRE 013631095

Tibor Lody, SIOR

310.899.2720

tlody@leewestla.com

AGT DRE 01261129

Tommy Isola

310.899.2709

tisola@leewestla.com

AGT DRE 01974024

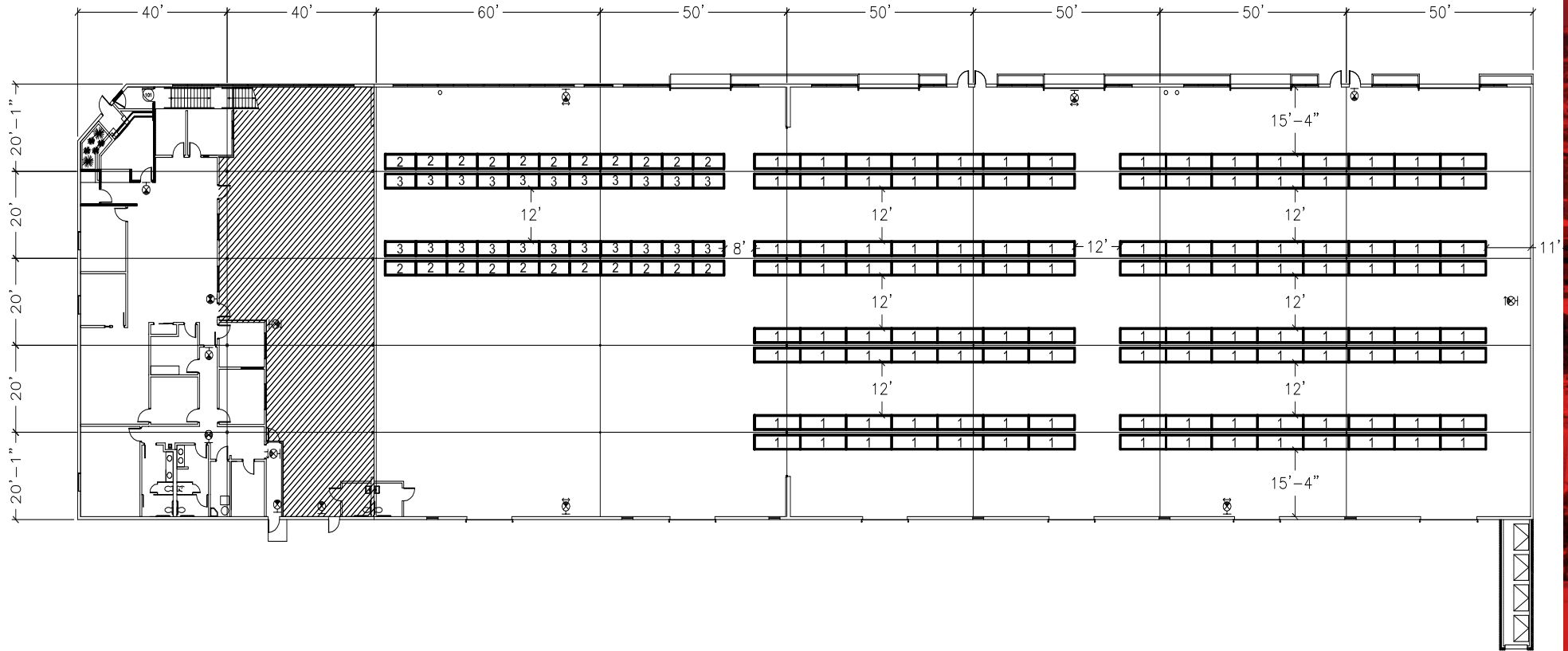
Adam Levine

310.899.2703

alevine@leewestla.com

AGT DRE 02104830

FIRST FLOOR RACKING PLAN



A DIVISION OF
LEE & ASSOCIATES

Keith Fielding

310.899.2719

kfielding@leewestla.com

AGT DRE 01729915

Aleks Trifunovic, SIOR

310.899.2721

atrifunovic@leewestla.com

BKR DRE 013631095

Tibor Lody, SIOR

310.899.2720

tlody@leewestla.com

AGT DRE 01261129

Tommy Isola

310.899.2709

tisola@leewestla.com

AGT DRE 01974024

Adam Levine

310.899.2703

alevine@leewestla.com

AGT DRE 02104830



Downtown Santa Monica

Bad Robot

Indian Paintbrush

CBS TV

Hulu

HBO

AMC Networks

Amazon Studios

Viacom

Lionsgate Ent.

The Pen Factory

Redbull HQ

Subject Property

10 FREEWAY

OLYMPIC BOULEVARD

COLORADO AVENUE



A DIVISION OF
LEE & ASSOCIATES

Keith Fielding
310.899.2719

kfielding@leewestla.com
AGT DRE 01729915

Aleks Trifunovic, SIOR
310.899.2721

atrifunovic@leewestla.com
BKR DRE 013631095

Tibor Lody, SIOR
310.899.2720

tlody@leewestla.com
AGT DRE 01261129

Tommy Isola
310.899.2709

tisola@leewestla.com
AGT DRE 01974024

Adam Levine
310.899.2703

alevine@leewestla.com
AGT DRE 02104830