



www.leewestla.com | dre 01222000

CULVER CITY FLEX/CREATIVE OFFICE - FOR LEASE

3960 LANDMARK STREET, CULVER CITY, CA 90232

PROPERTY HIGHLIGHTS

- Private Compound Creative/Flex Facility



- Large Glass Roll Up Doors for Fresh Air Cross Ventilation



- Secured Facility with Access Controls Throughout



- Dedicated, Independent HVAC System



- Walker's Paradise(95)



- Separate Delivery Area for Packages, Mail & Food Delivery



A DIVISION OF
LEE & ASSOCIATES



PREMISES 3960 Landmark: ± 15,596 SF

RENT Call Agent

AVAILABLE Immediate

TERM 3 - 10 Years

PARKING 2.5-3/1,000 (with Valet) \$150 Stall/month

FEATURES

- 16' - 23' Clear Span Column-free Open Areas
- Large Roll-Up Door Providing both Dock High and Drive-in Use
- Adjacent to The Platform and Countless Amenities
- Across from Metro Expo's Culver City Station
- Minutes from I-10 on-ramp

CONTACT

Tibor Lody, SIOR
310.899.2720
tlody@leewestla.com
AGT DRE# 01261129

Keith Fielding
310.899.2719
kfielding@leewestla.com
AGT DRE# 01729915

Aleks Trifunovic, SIOR
310.899.2721
atrifunovic@leewestla.com
BKR DRE# 01363109

Tommy Isola
310.899.2709
tisola@leewestla.com
AGT DRE# 01934684



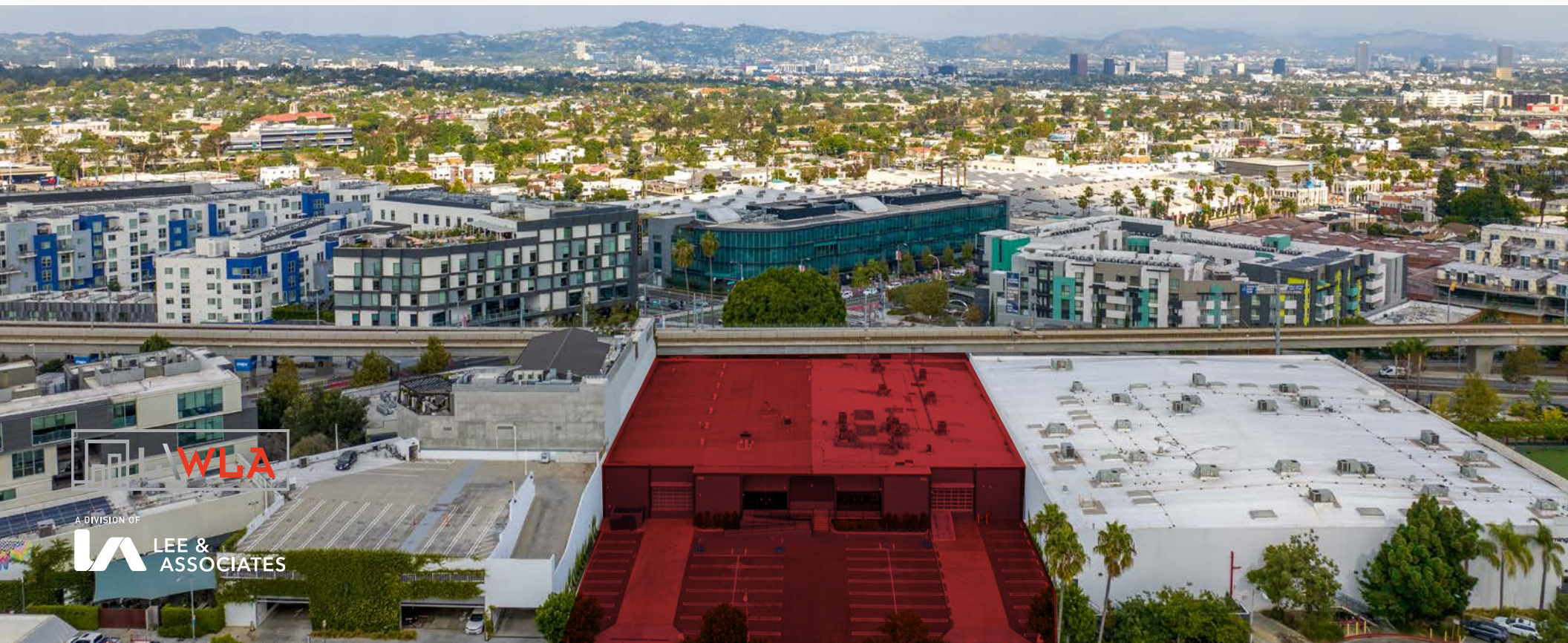
A DIVISION OF
LEE & ASSOCIATES



1508 17th Street, Santa Monica, CA 90404
310.899.2700 | www.leewestla.com | dre# 01222000

No warranty or representation is made to the accuracy of the foregoing information.
Terms of sale or lease are subject to change or withdrawal without notice.





NEARBY TENANTS

LAX

Playa Vista

Marina del Rey

Venice



Sony Studios

One Culver

Amazon

Culver Steps

The Platform

Ivy Station/HBO

Apple

Apple

Helms Bakery District



A DIVISION OF
LEE & ASSOCIATES



AMENITIES MAP



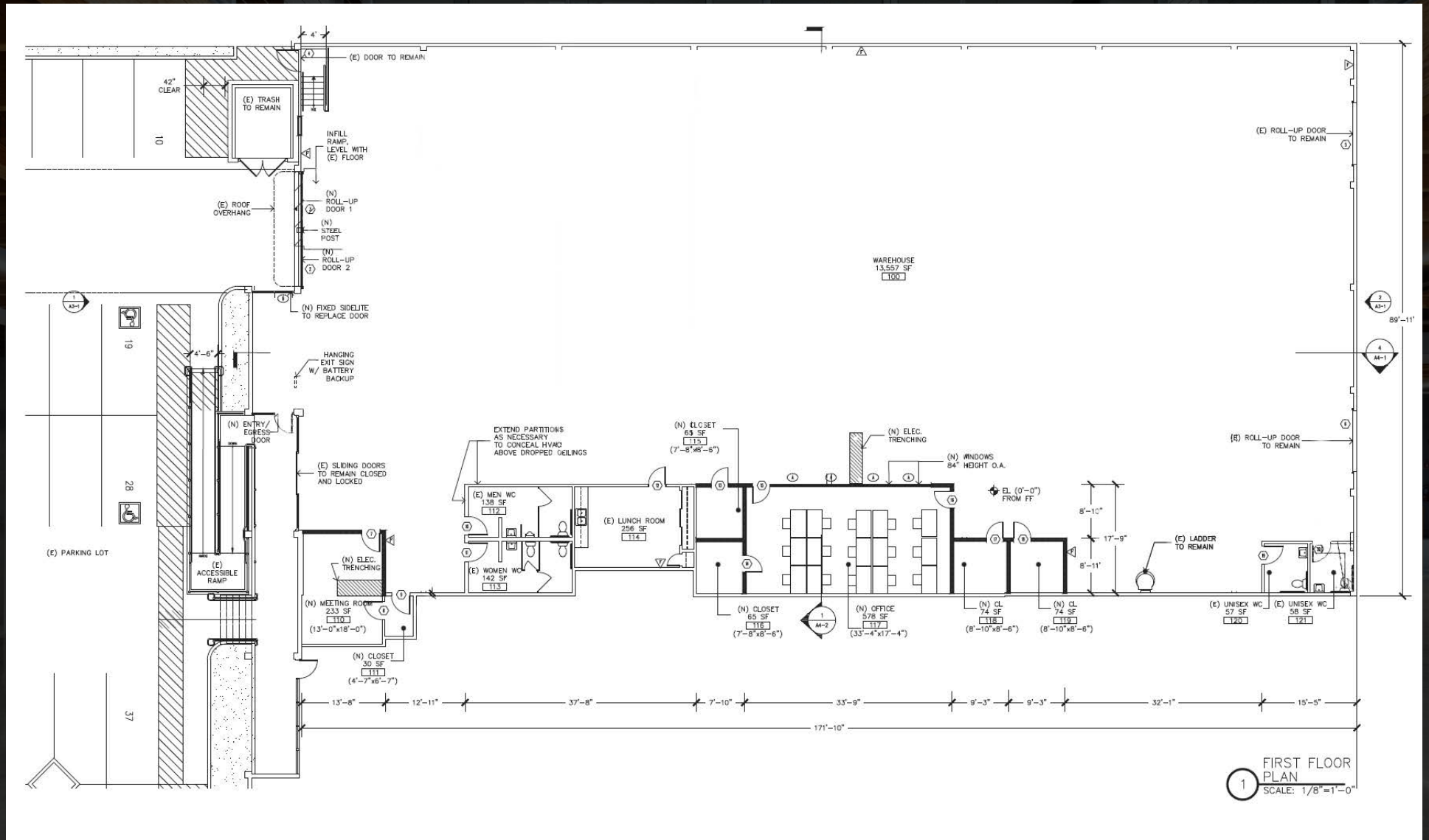
SUBJECT PROPERTY

1. Margot
2. Platform
3. Bianca
4. Etta
5. Co-opportunity
6. Father's Office
7. Pasta Sisters
8. Pinches Tacos
9. Monroe Place
10. Trader Joe's
11. In-N-Out
12. Erewhon
13. Juliet
14. Roberta's
15. Los Angeles Ale Works
16. Equator Coffees
17. Cognoscenti Coffee
18. Altano Sports Bar
19. Breakaway Cafe
20. Van Leeuwen Ice



A DIVISION OF
LEE & ASSOCIATES

FLOOR PLAN



A DIVISION OF
LEE & ASSOCIATES

Tibor Lody, SIOR
 310.899.2720
 tlody@leewestla.com
 AGT DRE 01261129

Aleks Trifunovic, SIOR
 310.899.2721
 atrifunovic@leewestla.com
 BKR DRE 01363109

Keith Fielding
 310.899.2719
 kfielding@leewestla.com
 AGT DRE 01729915

Tommy Isola
 310.899.2709
 tisola@leewestla.com
 AGT DRE 01934684



Tibor Lody, SIOR
310.899.2720
tlody@leewestla.com
AGT DRE 01261129

Aleks Trifunovic, SIOR
310.899.2721
atrifunovic@leewestla.com
BKR DRE 01363109

Keith Fielding
310.899.2719
kfielding@leewestla.com
AGT DRE 01729915

Tommy Isola
310.899.2709
tisola@leewestla.com
AGT DRE 01934684

Adam Levine
310.899.2703
alevine@leewestla.com
AGT DRE 02104830

Sofa Kristiansen
310.899.2718
skristiansen@leewestla.com
AGT DRE 02219316