

11708 CULVER
BLVD
LOS ANGELES, CA

RETAIL/OFFICE SPACE FOR LEASE



PREMISES 11708 - ± 1,111 SF

RENT \$3.50/SF, NNN

TERM 3 - 5 Years

OCCUPANCY June 1, 2024

PARKING 9 Spaces in common with other Tenants

FEATURES

- Signalized Corner
- Retail/Office Space with Restroom
- Perfect for Salon, Food, Office, Medical Testing, etc.

CONTACT Spencer Horak
Principal
310.899.2728
shorak@leewestla.com
AGT DRE 01921906



1508 17th Street, Santa Monica, CA | 310.899.2700
WWW.LEEWESTLA.COM | DRE 01222000

No warranty or representation is made to the accuracy of the foregoing information.
Terms of sale or lease are subject to change or withdrawal without notice.



INTERIOR PHOTOS



A DIVISION OF



LEE &
ASSOCIATES

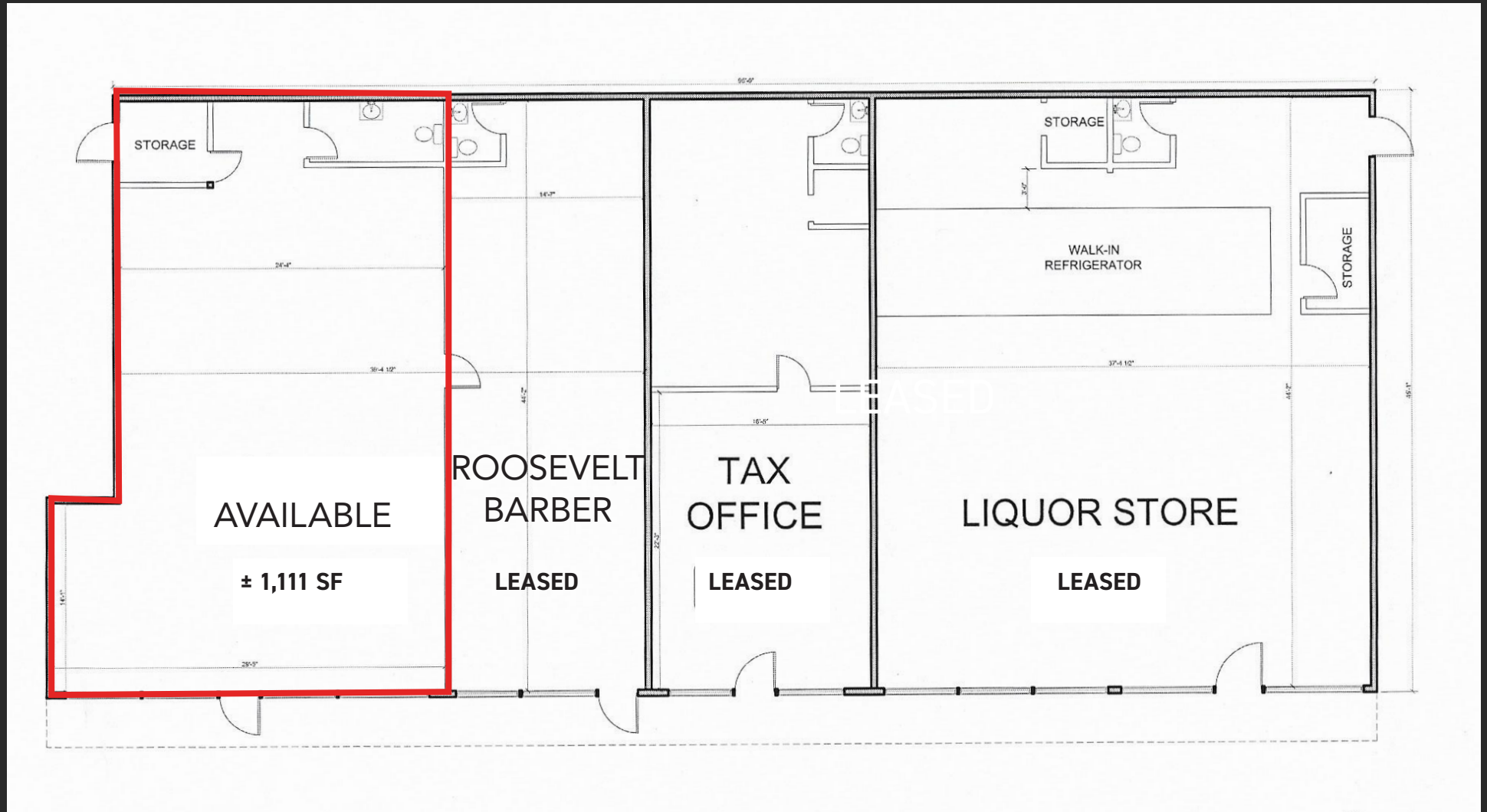
Spencer Horak
Principal

310.899.2728

shorak@leewestla.com

AGT DRE 01921906

FLOOR PLAN

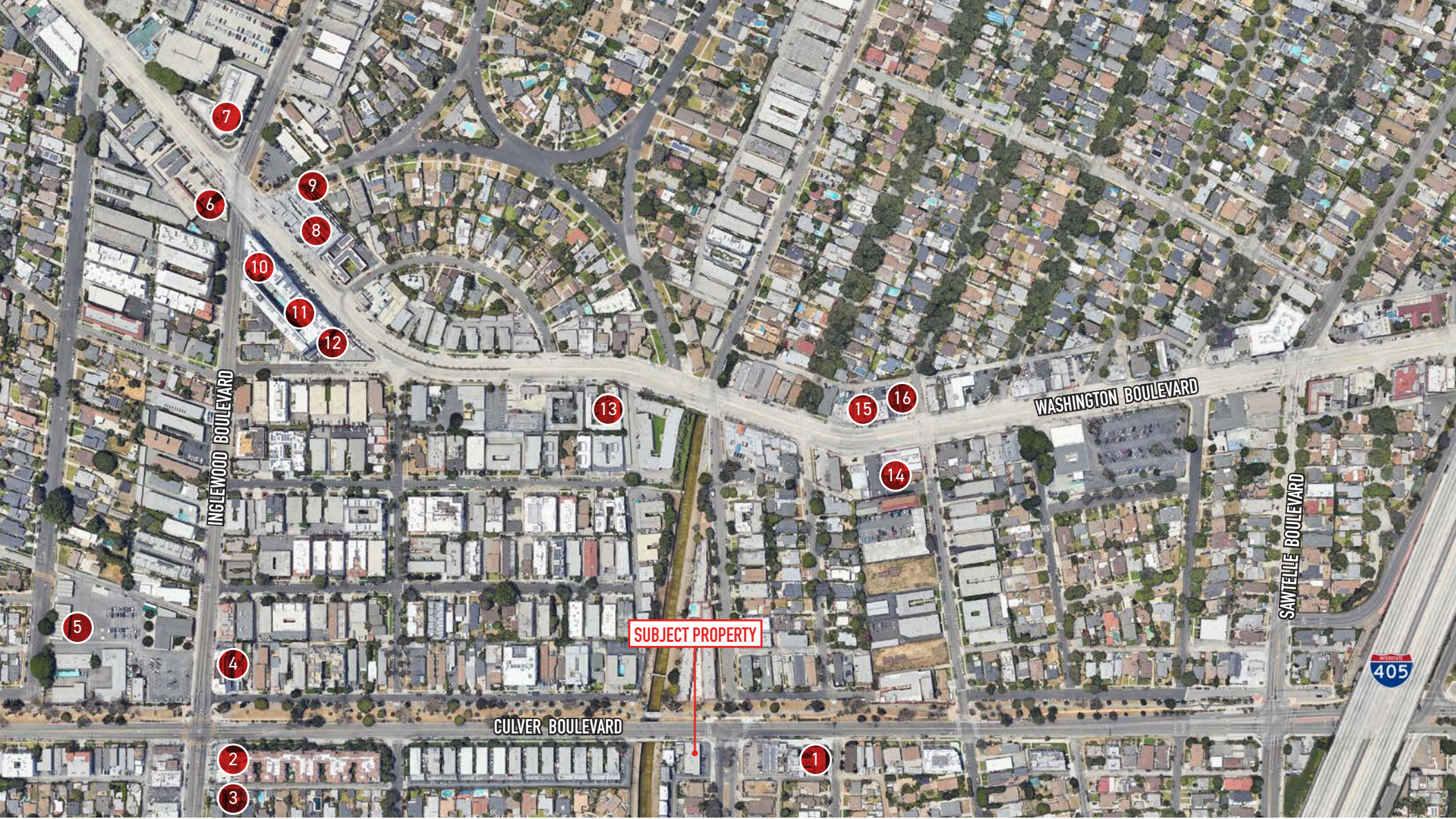


A DIVISION OF



LEE &
ASSOCIATES

Spencer Horak
Principal
310.899.2728
shorak@leewestla.com
AGT DRE 01921906



- 1. Coffee Commissary
- 2. Tacomiendo
- 3. Mario's Pizza
- 4. Mad Lab Coffee Roasters

- 5. St. Gerard Majella School
- 6. Everytable
- 7. Kaiser Permanente
- 8. The Hive Beauty Collection

- 9. Red Diamond Yoga
- 10. Brightside Yoga and Saunas
- 11. Orange Theory
- 12. Lodge Bread

- 13. Cafe Brasil
- 14. Samosa House
- 15. Culver Palms Animal Hospital
- 16. Manana Coffe



A DIVISION OF
LEE & ASSOCIATES

Spencer Horak
Principal
310.899.2728
shorak@leewestla.com
AGT DRE 01921906