

5930 W JEFFERSON BLVD

LOS ANGELES, CA 90016



RON RADER, SIOR
310.245.2200
rrader@leewestla.com

GAGE DANLEY
310.899.2749
gdanley@leewestla.com



*Proposed exterior rendering

PREMISES:

First Floor: ± 5,260 SF
 Second Floor: ± 5,600 SF
 Total Premises: ± 10,860 SF
 (Can be Lease Separately)

RENT:

Year 1: \$2.50 Net
 Year 2: \$2.60 Net
 Year 3 and beyond TBD
 (\$0.48 Nets PSF/Mo)

OCCUPANCY:

March 15, 2025

TERM:

3 - 5 Years

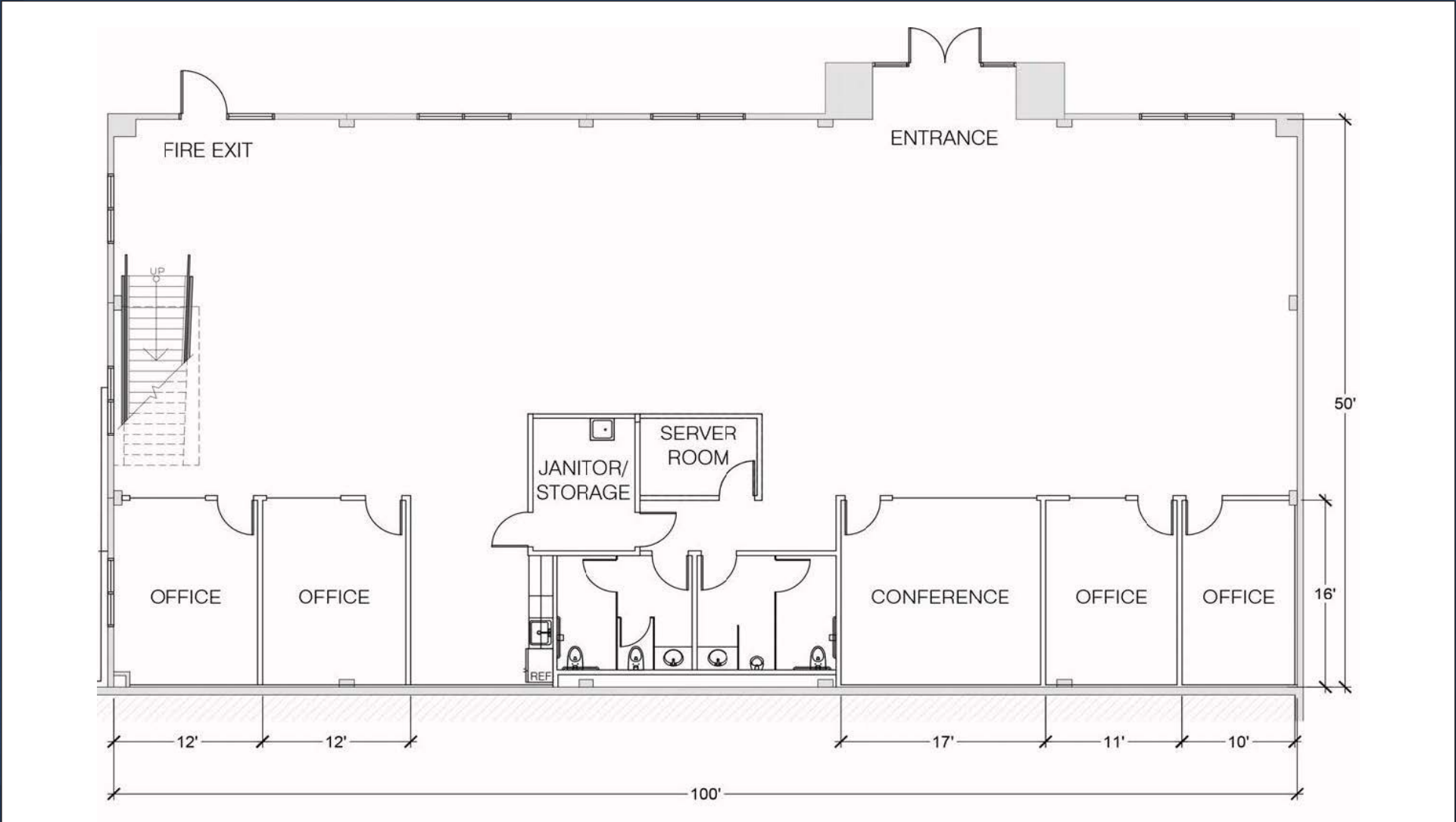
PARKING:

3/1,000 SF AT \$150/
 Space/Month
 (More Parking Available)

FEATURES:

- Building Identity
- Polished concrete floors
- High and exposed ceilings, glass walls
- Natural light
- Private breakout rooms
- Open kitchens with stainless appliances
- Conference room
- Private on-site parking
- Private outdoor patio
- Separate Entrance
- 24/7 HVAC control
- EV Chargers

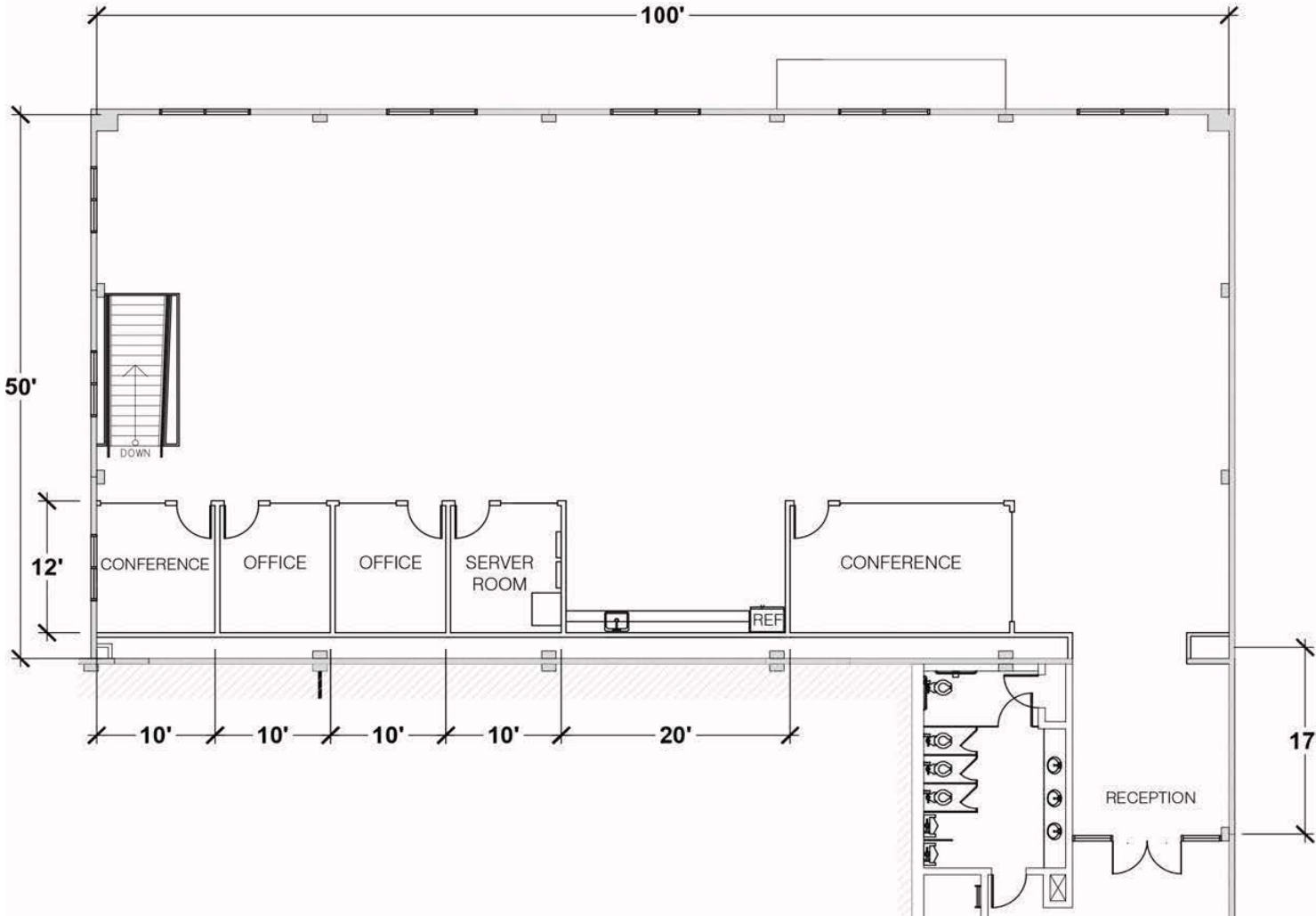
FIRST FLOOR PLAN



FIRST FLOOR INTERIORS



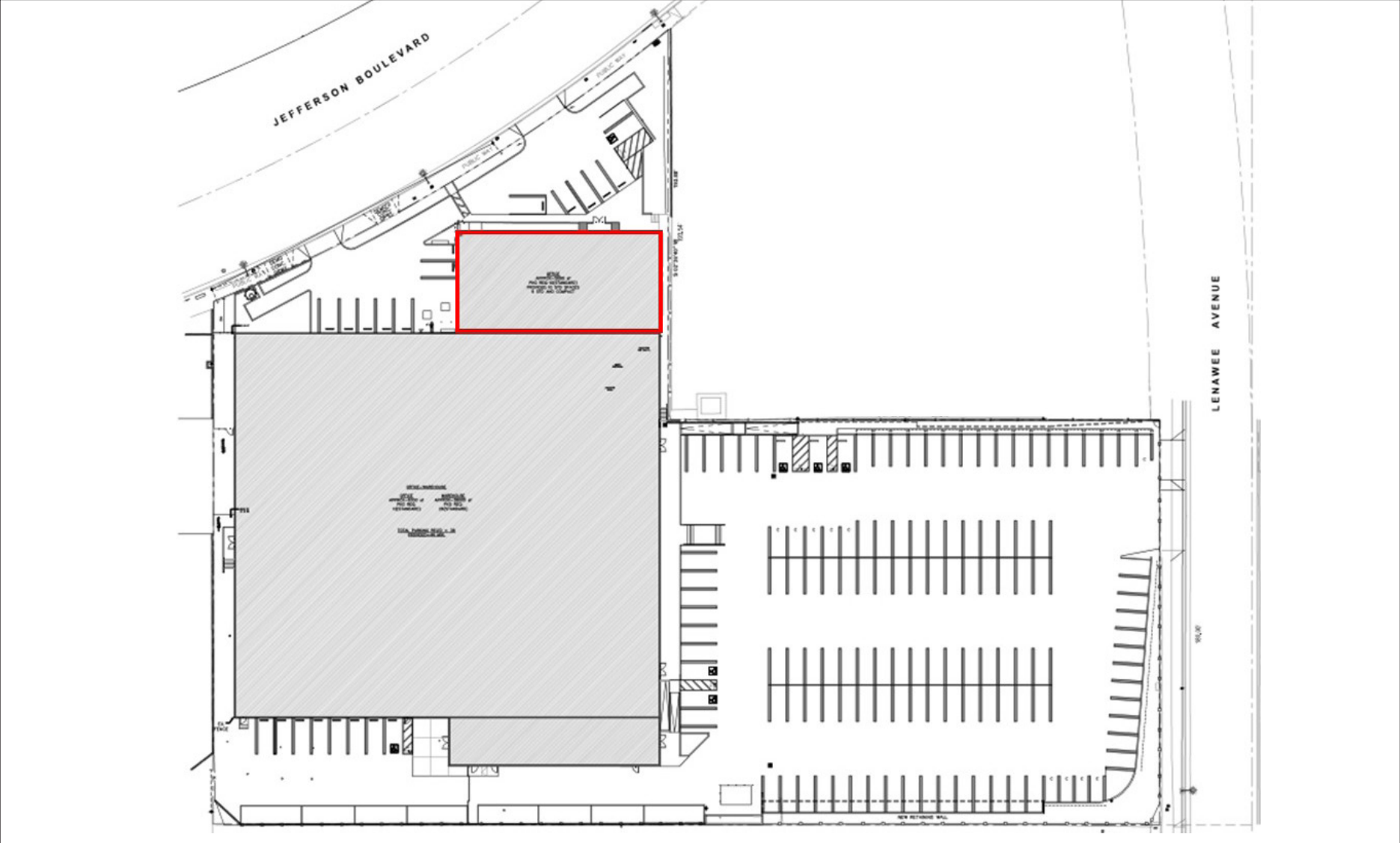
SECOND FLOOR PLAN



SECOND FLOOR INTERIORS



SITE PLAN



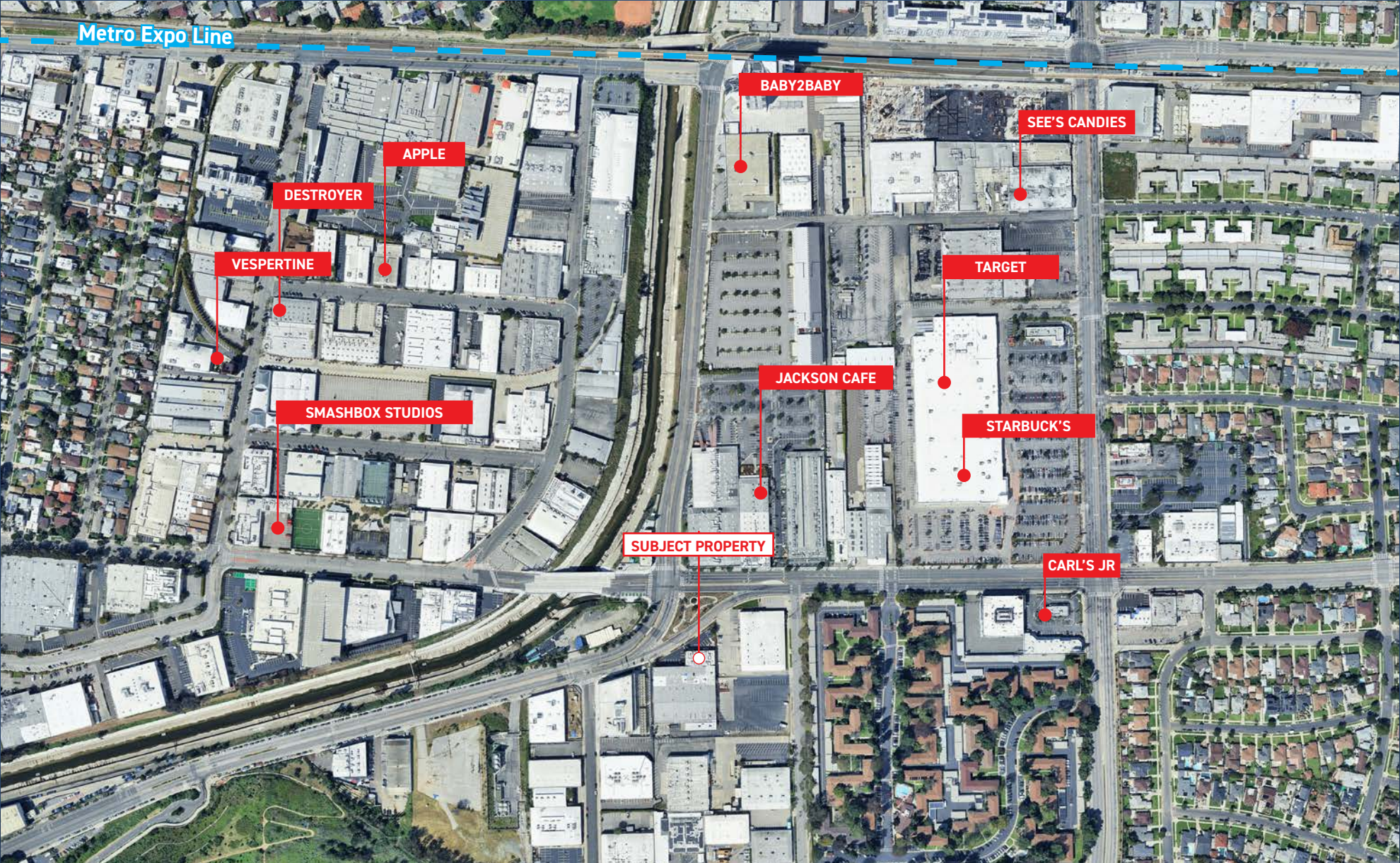
5930 W JEFERSON BLVD

AERIAL MAP



5930 W JEFERSON BLVD

NEARBY RESTAURANTS & AMENITIES



5930 W JEFERSON BLVD

NEARBY TENANTS



5930 W JEFERSON BLVD

NEARBY TENANTS



SUBJECT PROPERTY

MEUNDIES

HERMAN MILLER

ADOBE

APPLE MUSIC

NORDSTROM HQ

CULVER STUDIOS

AMAZON STUDIOS

SONY PICTURES

SMASHBOX STUDIOS

HOWARD INDUSTRIES

SPIN MASTER

RITUAL

SCOPELY, INC.

MORPHOSIS ARCHITECTS

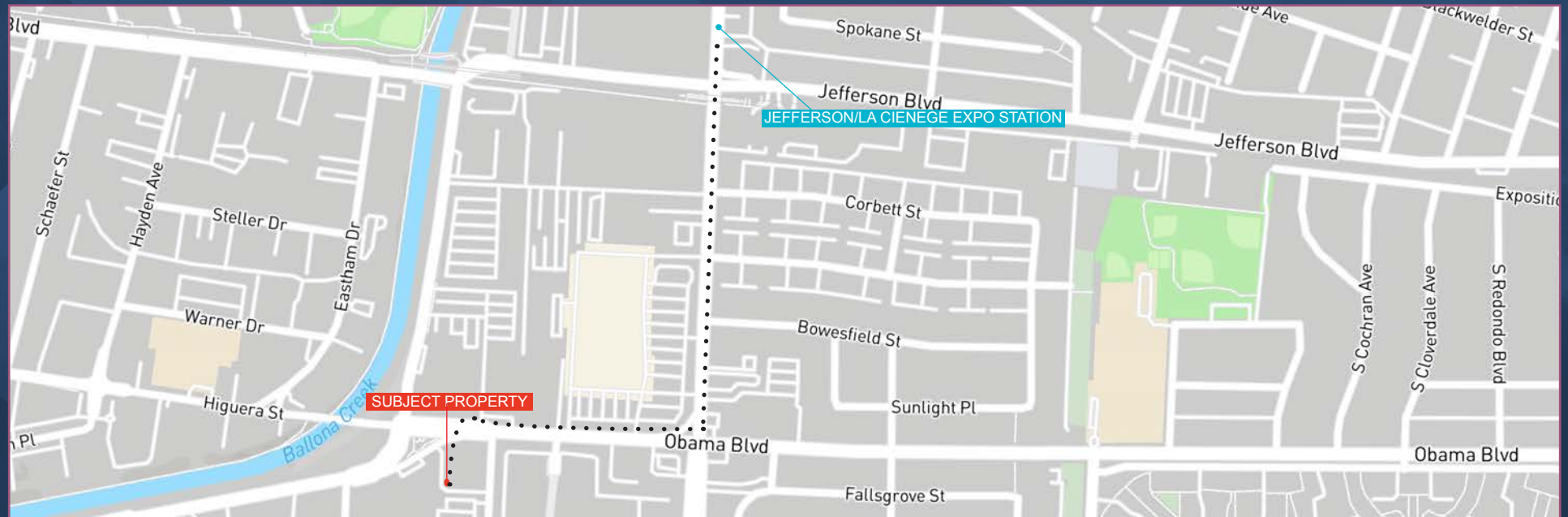
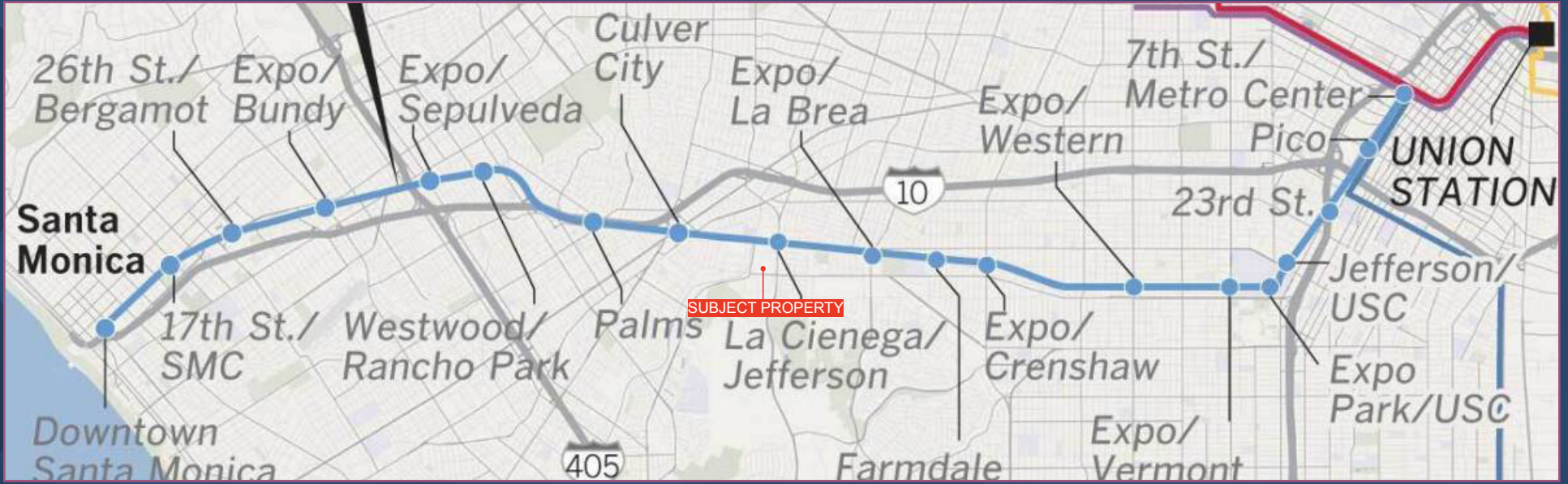
VOX MEDIA

ARSONAL DESIGN

JAM CITY HQ

5930 W JEFERSON BLVD

EXPO LINE



5930 W JEFERSON BLVD

CONTACTS



RON RADER, SIOR
310.245.2200
rrader@leewestla.com
BKR DRE 00452728

GAGE DANLEY
310.899.2749
gdanley@leewestla.com
AGT DRE 02075191

5930 W JEFERSON BLVD