

**PRICE REDUCTION**  
**\$3.95 PSF MG**



**2917 SANTA MONICA BOULEVARD**  
**SANTA MONICA, CA 90404**



PREMISES ± 5,100 SF

RENT \$3.95/SF, MG

TERM 3 - 5 Years

OCCUPANCY 30 Days

PARKING Private, Secure Lot in Back of Building

FEATURES

- Single Tenant Building
- Great Natural Lighting
- Creative Improvements with Exposed Brick
- Large Private Balcony
- Excellent Exposure along Santa Monica Blvd
- Located in the Heart of West Los Angeles
- Walking distance to numerous dining amenities
- Easy Access to 405 Freeway

CONTACT **Keith Fielding**  
310.899.2719  
kfielding@leewestla.com  
AGT DRE 01729915

**Tibor Lody, SIOR**  
310.899.2720  
tlody@leewestla.com  
AGT DRE 01261129

**Adam Levine**  
310.899.2703  
alevine@leewestla.com  
AGT DRE 02104830

**Aleks Trifunovic, SIOR**  
310.899.2721  
atrifunovic@leewestla.com  
BKR DRE 013631095

**Tommy Isola**  
310.899.2709  
tisola@leewestla.com  
AGT DRE 01974024



1508 17th Street, Santa Monica, CA | 310.899.2700

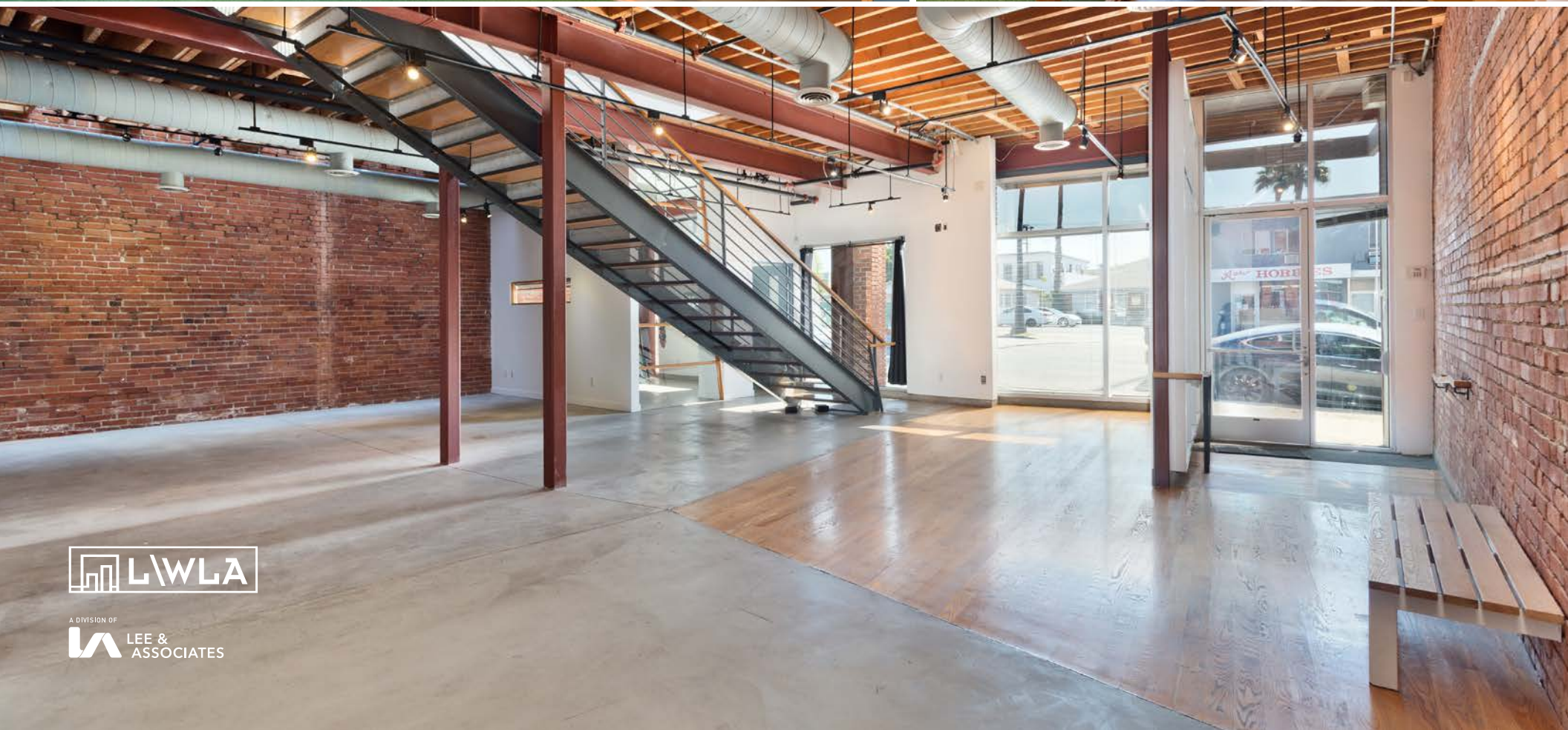
WWW.LEEWESTLA.COM | DRE 01222000

No warranty or representation is made to the accuracy of the foregoing information. Terms of sale or lease are subject to change or withdrawal without notice.



**2917 SANTA MONICA BOULEVARD  
SANTA MONICA, CA 90404**





A DIVISION OF  
**LEE & ASSOCIATES**

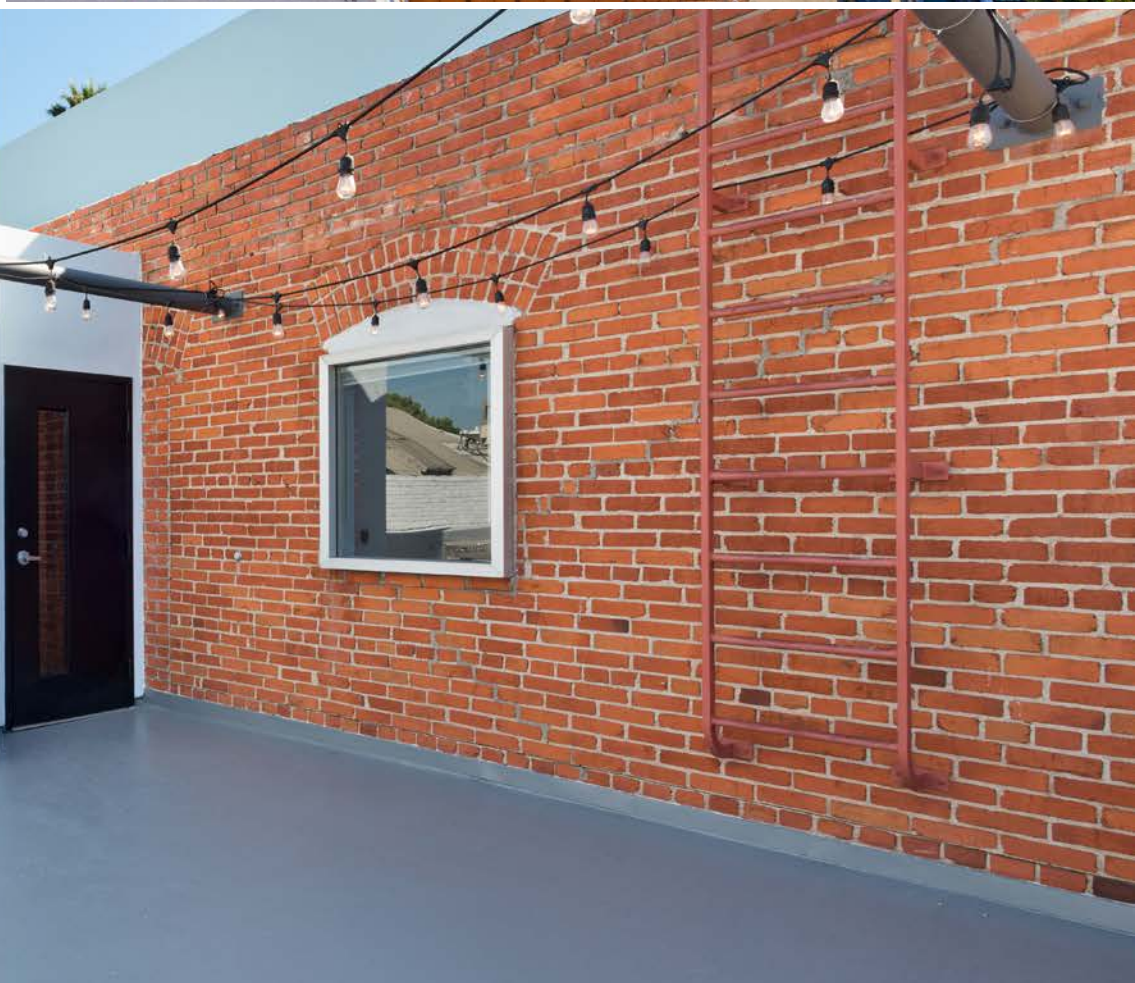
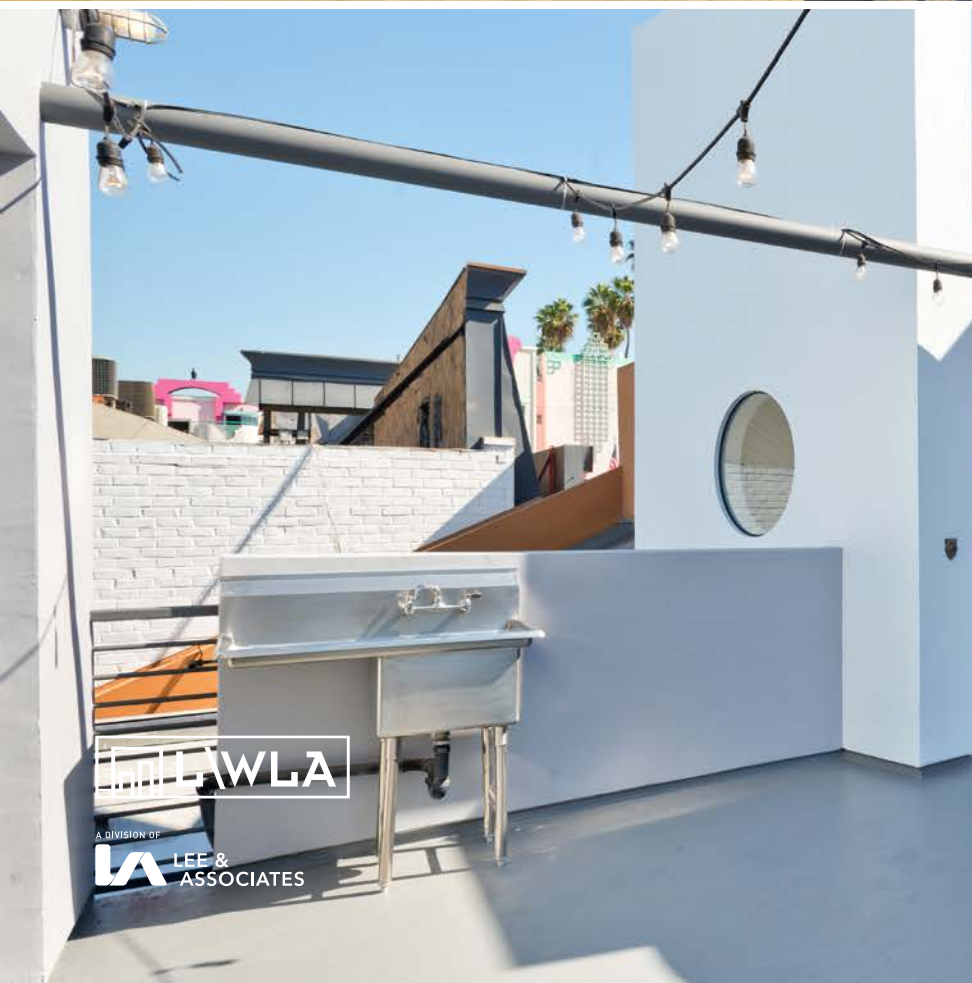




 LWLA

A DIVISION OF  
 LEE & ASSOCIATES





LAWLA

A DIVISION OF  
LEE &  
ASSOCIATES





**LWLA**

A DIVISION OF  
**LEE & ASSOCIATES**

IPHONE REPAIR  
310.895.8926  
2nd Floor Company

2015 MEDICAL

THE AMERICA SCHOOL OF  
NAIL & SKIN CARE

LORD BEAUTY SALON

CHAMPION

WINE EXP



# FLOOR PLAN

## FIRST FLOOR

Keith Fielding

310.899.2719

kfielding@leewestla.com

AGT DRE 01729915

Aleks Trifunovic, SIOR

310.899.2721

atrifunovic@leewestla.com

BKR DRE 013631095

Tibor Lody, SIOR

310.899.2720

tlody@leewestla.com

AGT DRE 01261129

Tommy Isola

310.899.2709

tisola@leewestla.com

AGT DRE 01974024

Adam Levine

310.899.2703

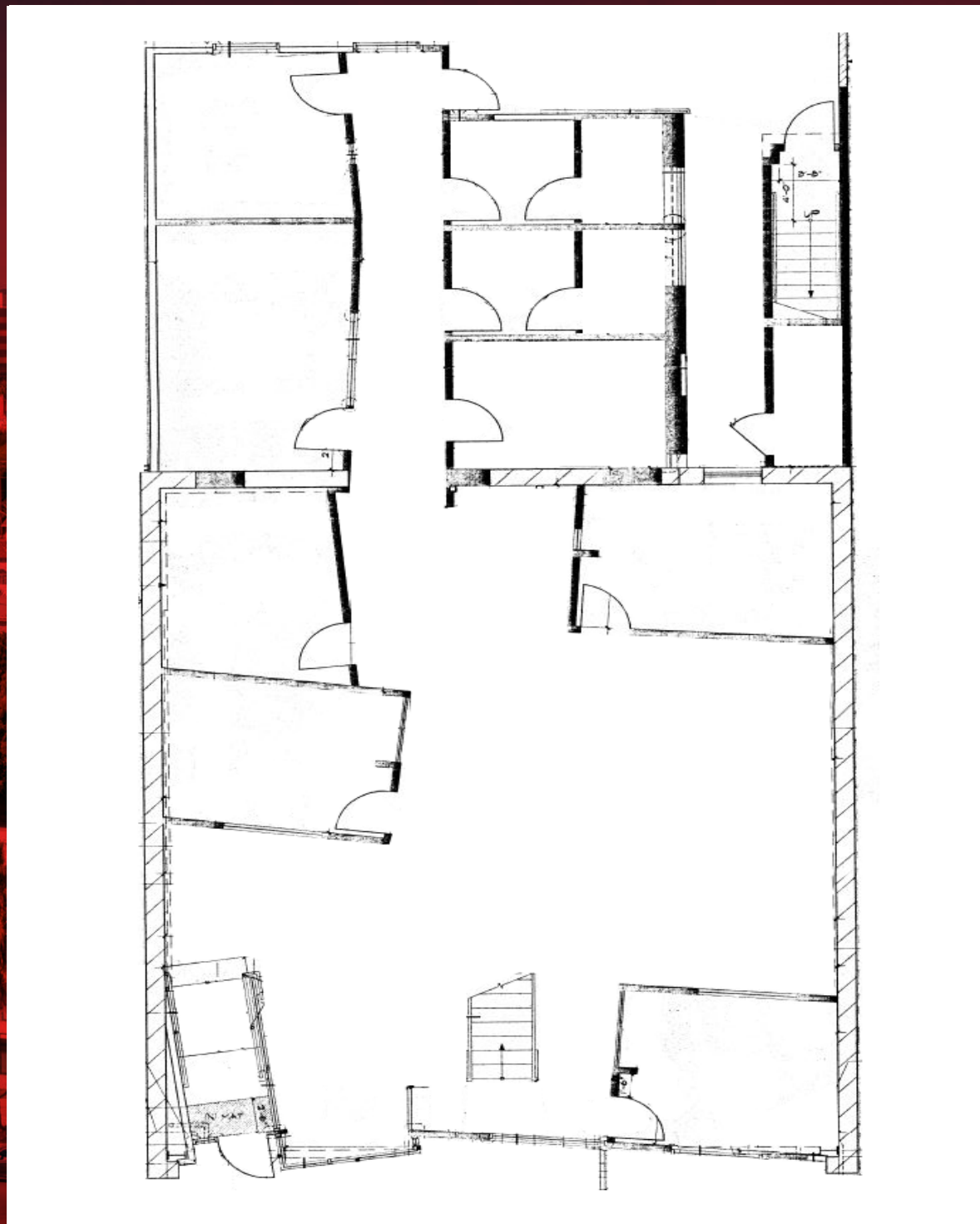
alevine@leewestla.com

AGT DRE 02104830



A DIVISION OF

**LEE & ASSOCIATES**





# FLOOR PLAN

## SECOND FLOOR

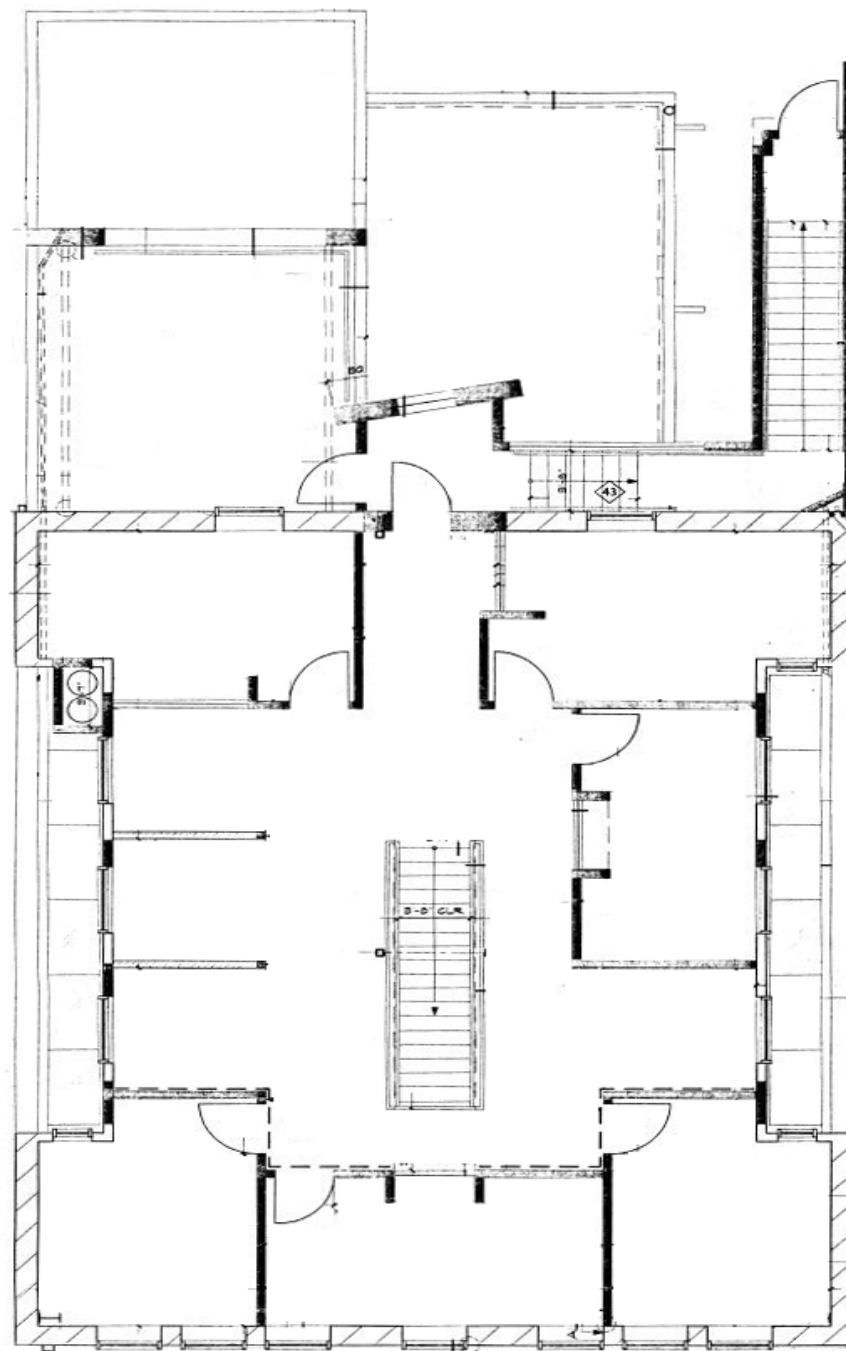
Keith Fielding  
310.899.2719  
kfielding@leewestla.com  
AGT DRE 01729915

Aleks Trifunovic, SIOR  
310.899.2721  
atrifunovic@leewestla.com  
BKR DRE 013631095

Tibor Lody, SIOR  
310.899.2720  
tlody@leewestla.com  
AGT DRE 01261129

Tommy Isola  
310.899.2709  
tisola@leewestla.com  
AGT DRE 01974024

Adam Levine  
310.899.2703  
alevine@leewestla.com  
AGT DRE 02104830



A DIVISION OF  
**LEE & ASSOCIATES**





A DIVISION OF  
**LEE & ASSOCIATES**

Keith Fielding  
310.899.2719

kfielding@leewestla.com  
AGT DRE 01729915

Aleks Trifunovic, SIOR  
310.899.2721

atrifunovic@leewestla.com  
BKR DRE 013631095

Tibor Lody, SIOR  
310.899.2720

tlody@leewestla.com  
AGT DRE 01261129

Tommy Isola  
310.899.2709

tisola@leewestla.com  
AGT DRE 01974024

Adam Levine  
310.899.2703

alevine@leewestla.com  
AGT DRE 02104830