

# INDUSTRIAL / FLEX SPACE FOR LEASE



**1625 17TH STREET**  
**SANTA MONICA, CA 90404**



PREMISES Suite 7 - 2,708 SF

RENT \$2.75/SF, MG

OCCUPANCY Immediate

TERM 2+ Years

PARKING 3 Spaces

FEATURES

- Concrete Floors
- 12' Exposed Ceilings
- Roll Up Door
- Easy Access to the 10 Freeway
- Walking Distance to a Variety of Local Amenities

CONTACT

**James Wilson**  
310.899.2708  
jwilson@leewestla.com  
AGT DRE 00883324



A DIVISION OF  
**LEE & ASSOCIATES**

1508 17th Street, Santa Monica, CA  
310.899.2700 | WWW.LEEWESTLA.COM | DRE 01222000

No warranty or representation is made to the accuracy of the foregoing information.  
Terms of sale or lease are subject to change or withdrawal without notice.



**1625 17TH STREET  
SANTA MONICA, CA 90404**



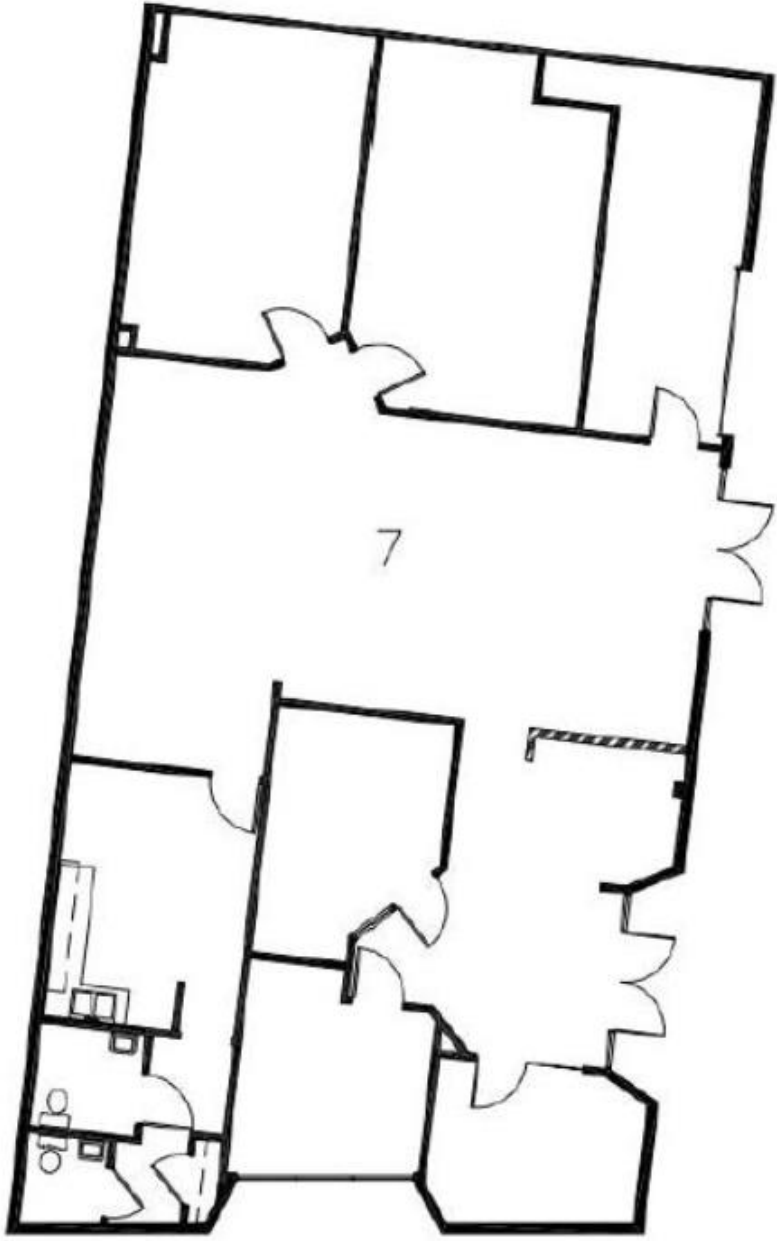


 L/WLA

A DIVISION OF  
 LEE &  
ASSOCIATES

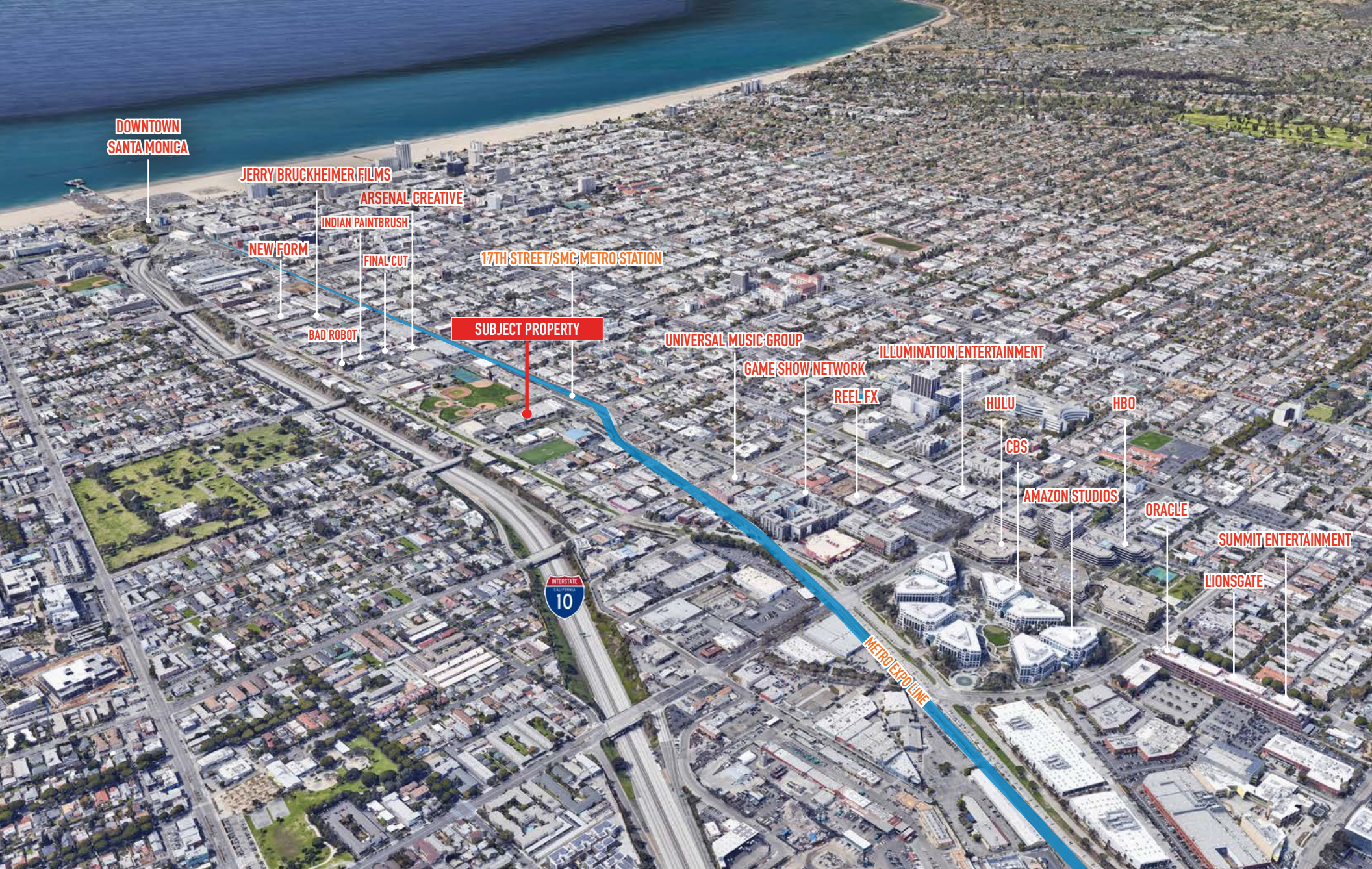


# FLOOR PLAN



A DIVISION OF  
**LEE & ASSOCIATES**





DOWNTOWN  
SANTA MONICA

JERRY BRUCKHEIMER FILMS

ARSENAL CREATIVE

INDIAN PAINTBRUSH

NEW FORM

FINAL CUT

17TH STREET/SMC METRO STATION

BAD ROBOT

SUBJECT PROPERTY

UNIVERSAL MUSIC GROUP

GAME SHOW NETWORK

ILLUMINATION ENTERTAINMENT

REEL FX

HULU

HBO

CBS

AMAZON STUDIOS

ORACLE

SUMMIT ENTERTAINMENT

LIONSGATE



METRO EXPO LINE



A DIVISION OF  
**LEE & ASSOCIATES**

**James Wilson**

310.899.2708

[jwilson@leewestla.com](mailto:jwilson@leewestla.com)

AGT DRE 00883324