

INDUSTRIAL / FLEX SPACE FOR LEASE



1625 17TH STREET
SANTA MONICA, CA 90404

PREMISES Suite 7 - 2,708 SF

RENT \$2.75/SF, MG

OCCUPANCY Immediate

TERM Month-to-Month to 18 Months

PARKING 3 Spaces

FEATURES

- Concrete Floors
- 12' Exposed Ceilings
- Roll Up Door
- Easy Access to the 10 Freeway
- Walking Distance to a Variety of Local Amenities

CONTACT

James Wilson
310.899.2708
jwilson@leewestla.com
AGT DRE 00883324



A DIVISION OF
LEE & ASSOCIATES

1508 17th Street, Santa Monica, CA
310.899.2700 | WWW.LEEWESTLA.COM | DRE 01222000

No warranty or representation is made to the accuracy of the foregoing information.
Terms of sale or lease are subject to change or withdrawal without notice.



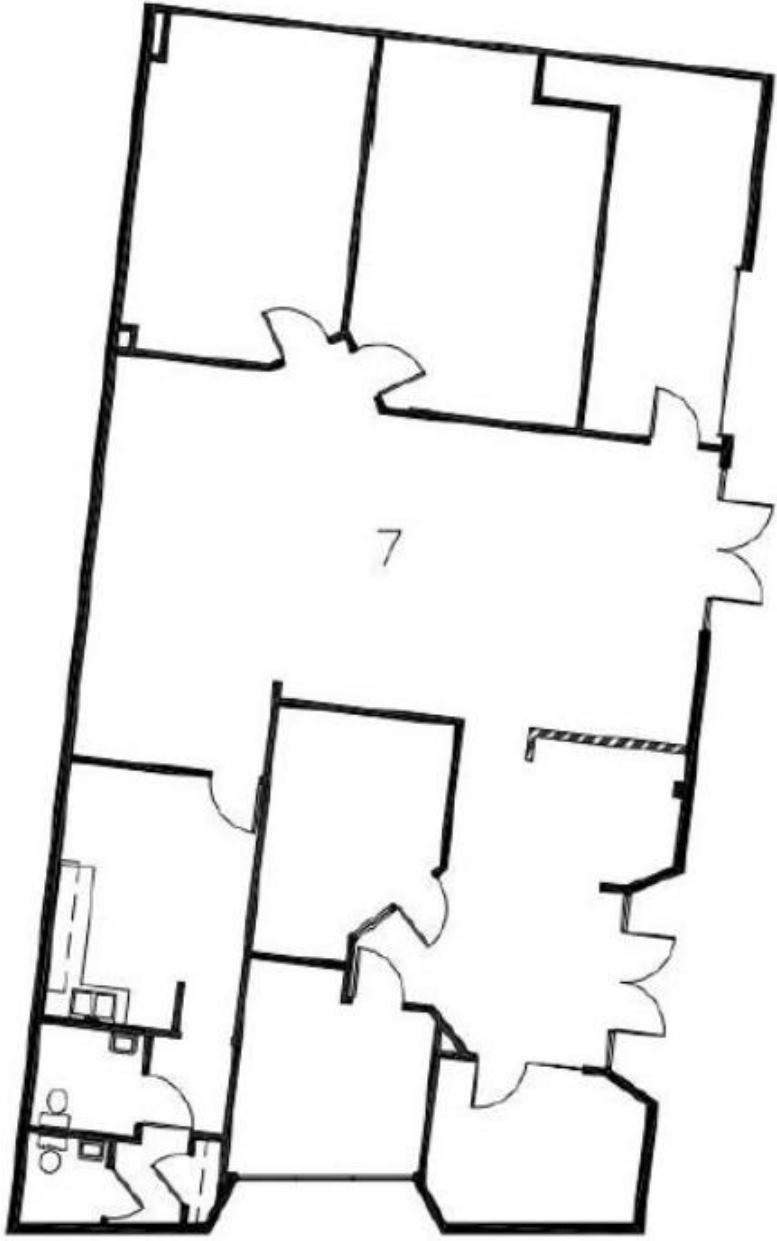
**1625 17TH STREET
SANTA MONICA, CA 90404**



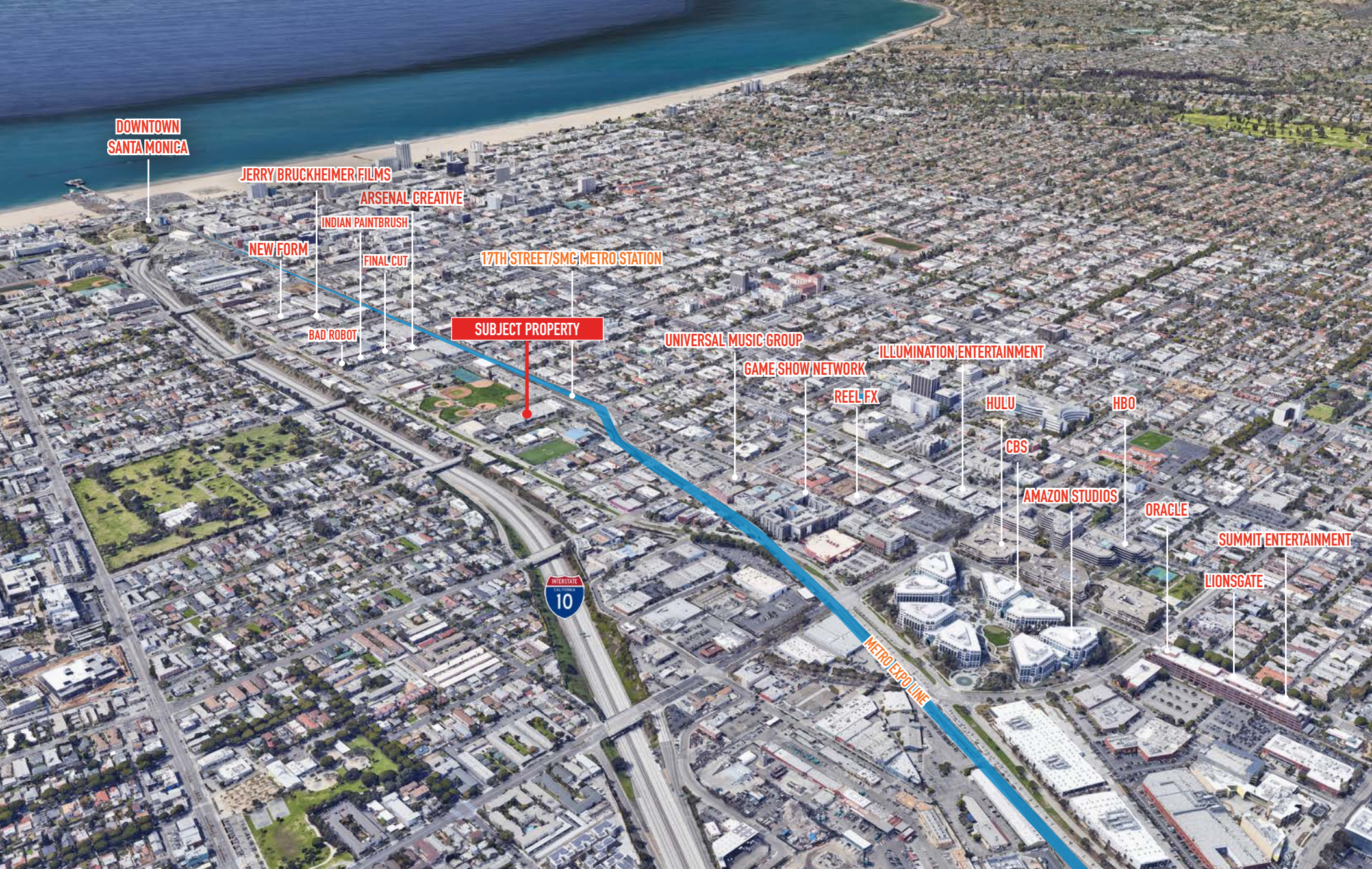
 L/WLA

A DIVISION OF
 LEE &
ASSOCIATES

FLOOR PLAN



A DIVISION OF
L\WLA LEE & ASSOCIATES



DOWNTOWN
SANTA MONICA

JERRY BRUCKHEIMER FILMS

ARSENAL CREATIVE

INDIAN PAINTBRUSH

NEW FORM

FINAL CUT

17TH STREET/SMC METRO STATION

BAD ROBOT

SUBJECT PROPERTY

UNIVERSAL MUSIC GROUP

GAME SHOW NETWORK

ILLUMINATION ENTERTAINMENT

REEL FX

HULU

HBO

CBS

AMAZON STUDIOS

ORACLE

SUMMIT ENTERTAINMENT

LIONSGATE



METRO EXPO LINE



A DIVISION OF
LEE & ASSOCIATES

James Wilson

310.899.2708

jwilson@leewestla.com

AGT DRE 00883324