

5741  
BUCKINGHAM  
PARKWAY



CLEARANCE 12'

A

Lee & Associates



A DIVISION OF  
LEE & ASSOCIATES

Unit A: ± 7,102 SF | Unit C: ± 6,645 SF  
INDUSTRIAL/FLEX UNITS FOR LEASE

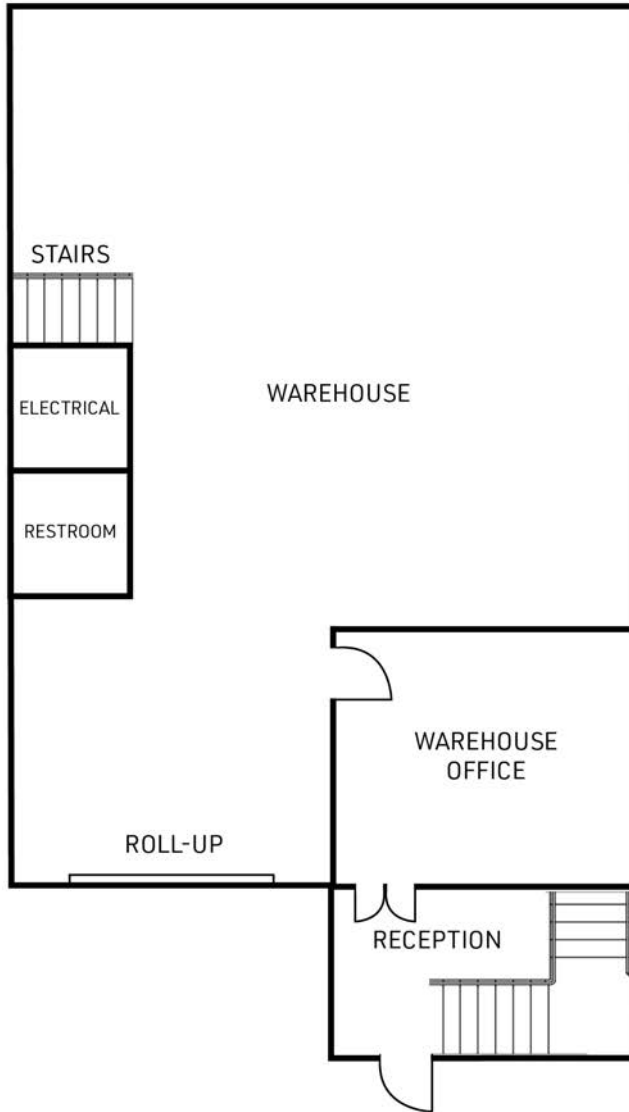
# PROPERTY INFORMATION



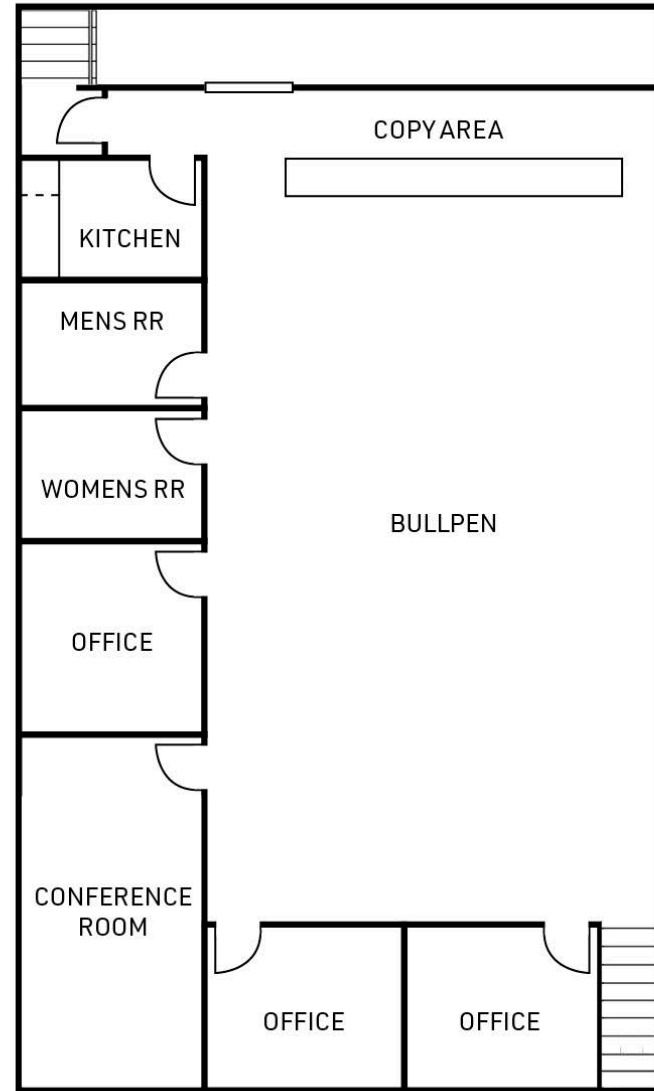
	<u>Unit A</u>	<u>Unit C</u>
<b>PREMISES</b>	7,102 SF	6,645 SF
<b>RENT</b>	\$2.50/SF, NNN	\$2.15/SF, NNN
<b>AVAILABILITY</b>	Immediate	Immediate
<b>TERM</b>	Negotiable	Negotiable
<b>PARKING</b>	2/1,000	2/1,000
<b>POWER</b>	200 Amps (to be confirmed)	200 Amps (to be confirmed)
<b>LOADING</b>	1 Ground Level Door	1 Ground Level Door
<b>FEATURES</b>	<ul style="list-style-type: none"> <li>- Great Industrial Opportunity in Culver City</li> <li>- 20' Ceilings</li> <li>- 24/7 On-Site Property Management &amp; Maintenance</li> <li>- Easy access to the 405 and 90 Freeways</li> <li>- High Speed fiber internet service capability</li> <li>- Short drive to LAX Airport</li> </ul>	
<b>CONTACTS</b>	<p><b>Aleks Trifunovic, SIOR</b>            310.899.2721            atrifunovic@leewestla.com            BKR DRE 01363109</p> <p><b>Adam Levine</b>            310.899.2703            alevine@leewestla.com            AGT DRE 02104830</p>	<p><b>Tommy Isola</b>            310.899.2709            tisola@leewestla.com            AGT DRE 01974024</p> <p><b>Sofia Kristiansen</b>            310.899.2739            skristiansen@leewestla.com            AGT DRE 02219316</p>

# FLOOR PLANS | 5741 BUCKINGHAM SUITE A

FIRST FLOOR - 4,742 SF

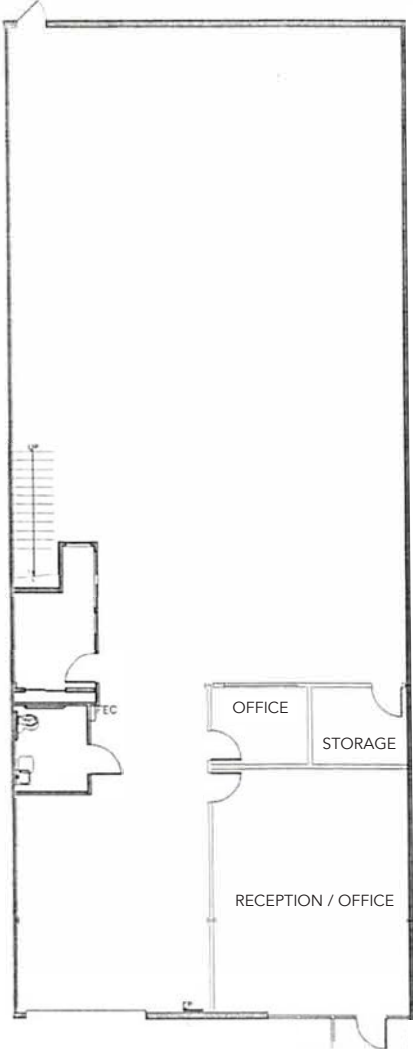


MEZZANINE - 2,360 SF

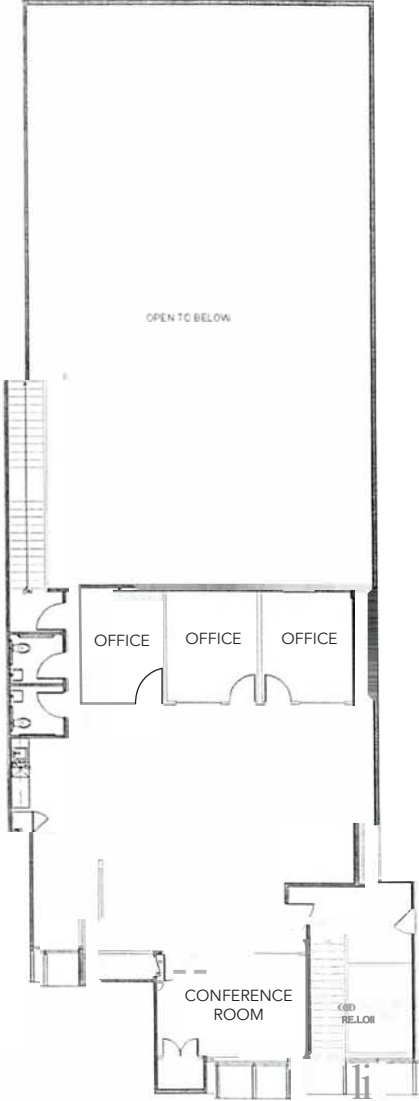


# FLOOR PLAN | 5741 BUCKINGHAM SUITE C

## 1st FLOOR



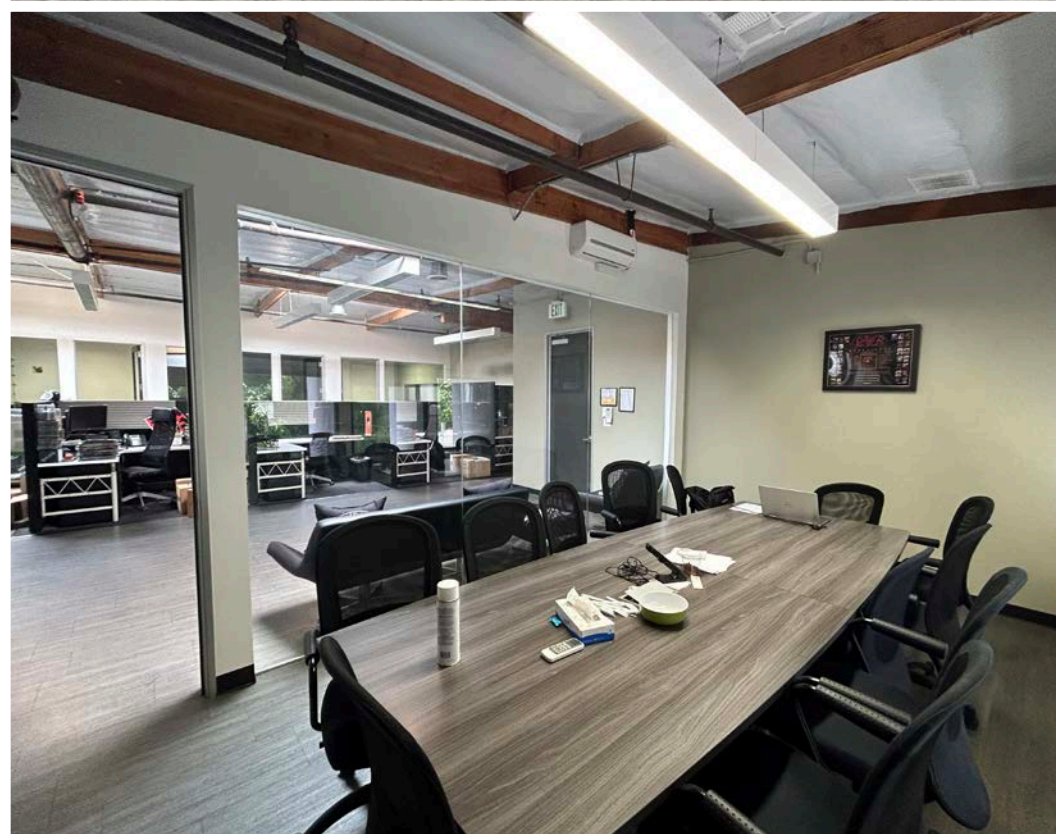
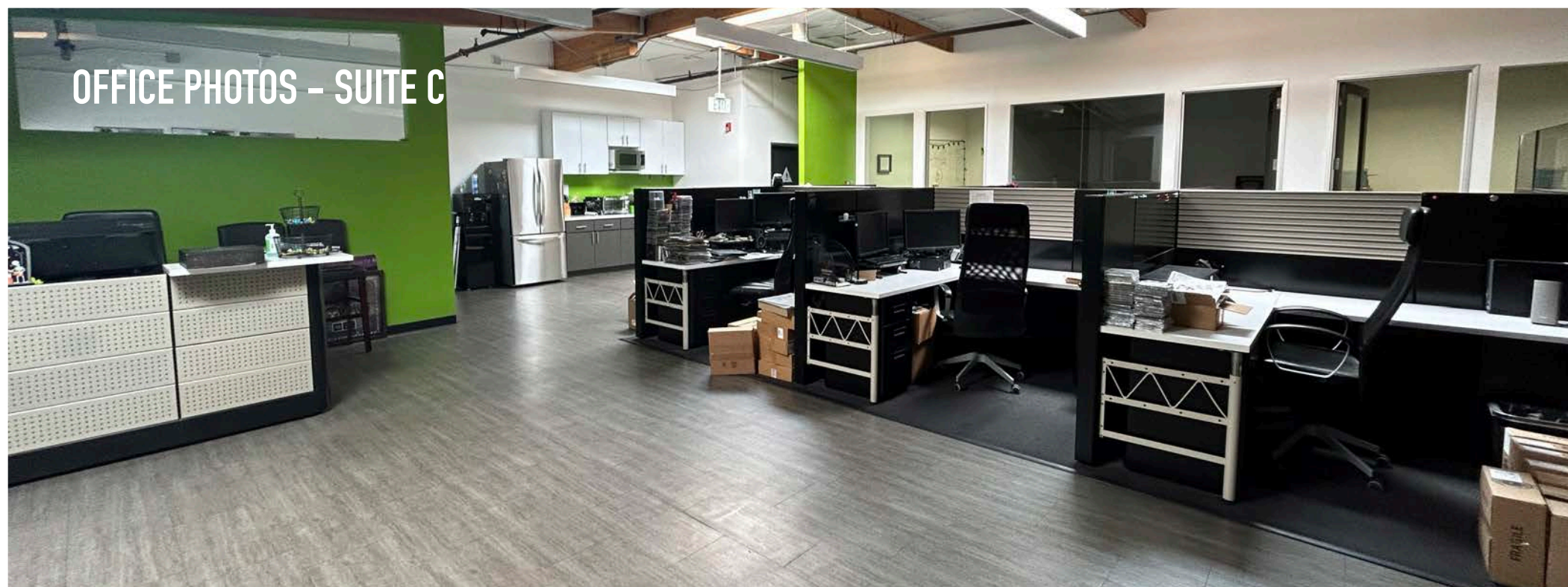
## 2nd FLOOR



WAREHOUSE PHOTOS - SUITE C



# OFFICE PHOTOS - SUITE C



# SITE MAP

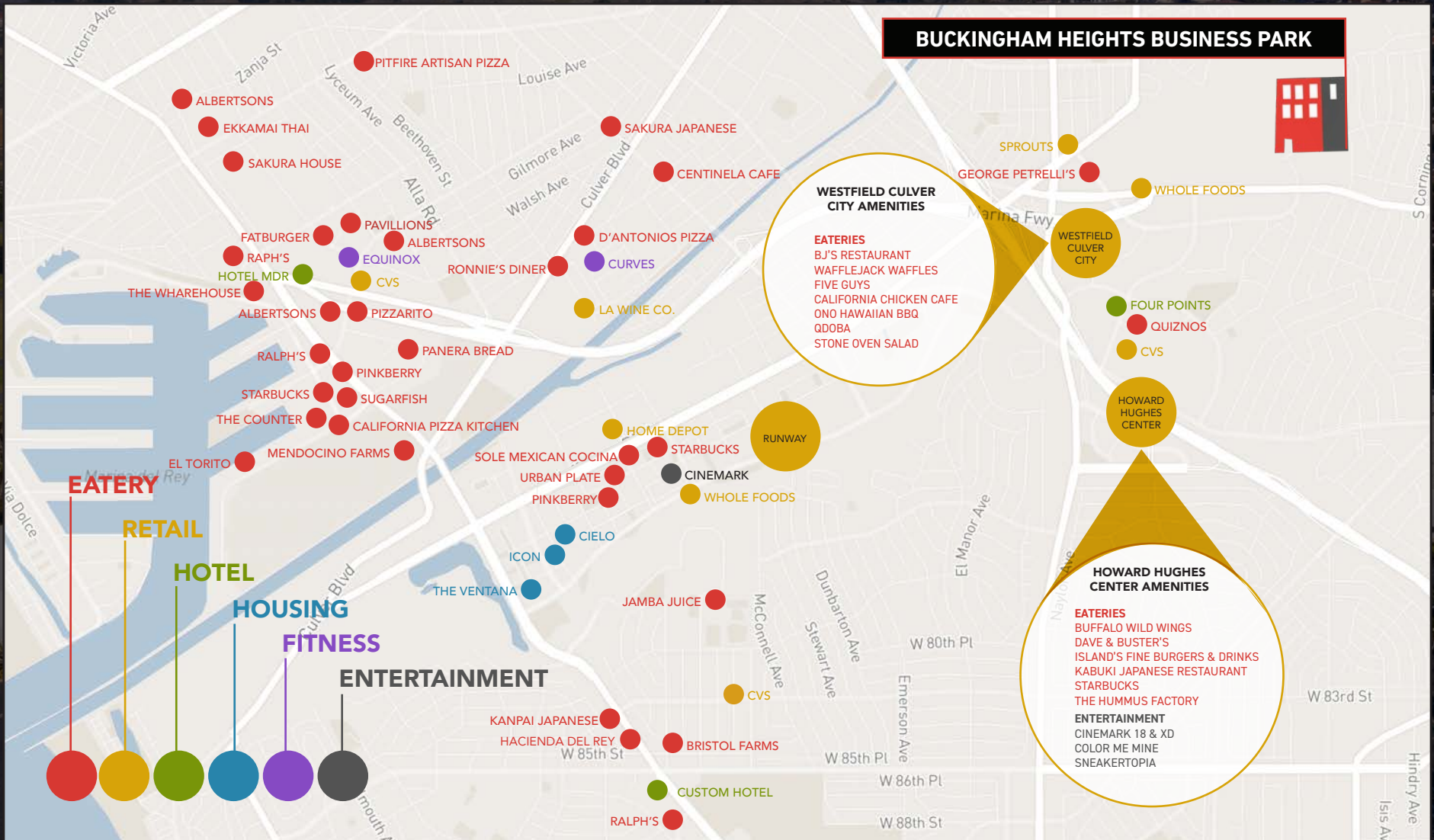


A DIVISION OF



LEE &  
ASSOCIATES

# AMENITY MAP







**Aleks Trifunovic, SIOR**  
President  
310.899.2721  
atrifunovic@leewestla.com  
BKR DRE 01363109



**Tommy Isola**  
Principal  
310.899.2709  
tisola@leewestla.com  
AGT DRE 01974024



**Adam Levine**  
Associate  
310.899.2703  
alevine@leewestla.com  
AGT DRE 02104830



**Sofia Kristiansen**  
Associate  
310.899.2718  
skristiansen@leewestla.com  
AGT DRE 02219316

Lee & Associates Los Angeles West, Inc.  
1508 17th Street, Santa Monica, CA  
310.899.2700 | www.leewestla.com | DRE 01222000

No warranty or representation is made to the accuracy of the foregoing information.