

**5741  
BUCKINGHAM  
PARKWAY**



A DIVISION OF  
**LEE &  
ASSOCIATES**

**± 6,375 SF and 6,645 SF  
INDUSTRIAL/FLEX UNITS FOR LEASE**



# PROPERTY INFORMATION

|  |   |  |  |   |  |
|--|---|--|--|---|--|
| <b>PREMISES</b>  | <u>5741 Buckingham</u><br>Unit C: 6,645 SF<br>Unit E: 6,375 SF (2,040 SF Office)  |  |  |   |  |
| <b>RENT</b>  | Suite E: \$1.90/SF, NNN<br>Suite C: \$2.15/SF, NNN  |  |  |   |  |
| <b>AVAILABILITY</b>  | Immediate   |  |  |   |  |
| <b>TERM</b>  | Negotiable  |  |  |   |  |
| <b>PARKING</b>   | 2/1,000   |  |  |   |  |
| <b>POWER</b>   | Each Unit has 200 Amps (to be confirmed)  |  |  |   |  |
| <b>LOADING</b>   | Each Unit has 1 Ground Level Door   |  |  |   |  |
| <b>FEATURES</b>  | <ul style="list-style-type: none"><li>- Great Industrial Opportunity in Culver City</li><li>- 20' Ceilings</li><li>- 24/7 On-Site Property Management &amp; Maintenance</li><li>- Easy access to the 405 and 90 Freeways</li><li>- High Speed fiber internet service capability</li><li>- Short drive to LAX Airport</li></ul>            |  |  |   |  |
| <b>CONTACTS</b>  | <table><tr><td><b>Aleks Trifunovic, SIOR</b><br/>310.899.2721<br/>atrifunovic@leewestla.com<br/>BKR DRE 01363109</td><td><b>Tommy Isola</b><br/>310.899.2709<br/>tisola@leewestla.com<br/>AGT DRE 01974024</td></tr><tr><td><b>Adam Levine</b><br/>310.899.2703<br/>alevine@leewestla.com<br/>AGT DRE 02104830</td><td></td></tr></table> | <b>Aleks Trifunovic, SIOR</b><br>310.899.2721<br>atrifunovic@leewestla.com<br>BKR DRE 01363109 | <b>Tommy Isola</b><br>310.899.2709<br>tisola@leewestla.com<br>AGT DRE 01974024 | <b>Adam Levine</b><br>310.899.2703<br>alevine@leewestla.com<br>AGT DRE 02104830 |  |
| <b>Aleks Trifunovic, SIOR</b><br>310.899.2721<br>atrifunovic@leewestla.com<br>BKR DRE 01363109 | <b>Tommy Isola</b><br>310.899.2709<br>tisola@leewestla.com<br>AGT DRE 01974024  |  |  |   |  |
| <b>Adam Levine</b><br>310.899.2703<br>alevine@leewestla.com<br>AGT DRE 02104830                |   |  |  |   |  |



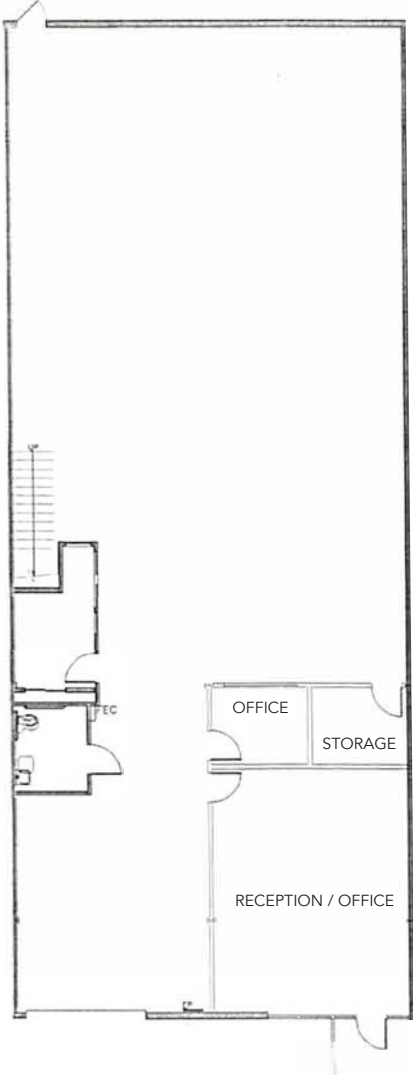
1508 17th Street, Santa Monica, CA | 310.899.2700

WWW.LEEWESTLA.COM | DRE 01222000

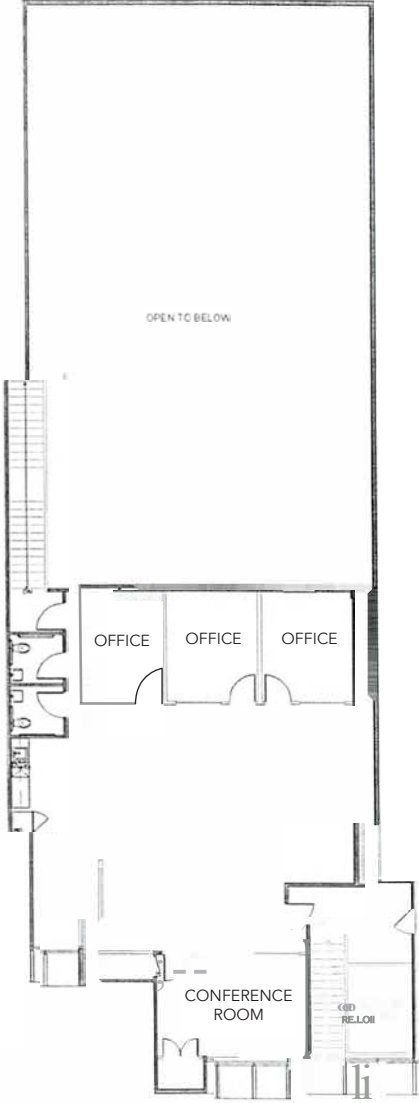
No warranty or representation is made to the accuracy of the foregoing information. Terms of sale or lease are subject to change or withdrawal without notice.

# FLOOR PLAN | 5741 BUCKINGHAM SUITE C

## 1st FLOOR

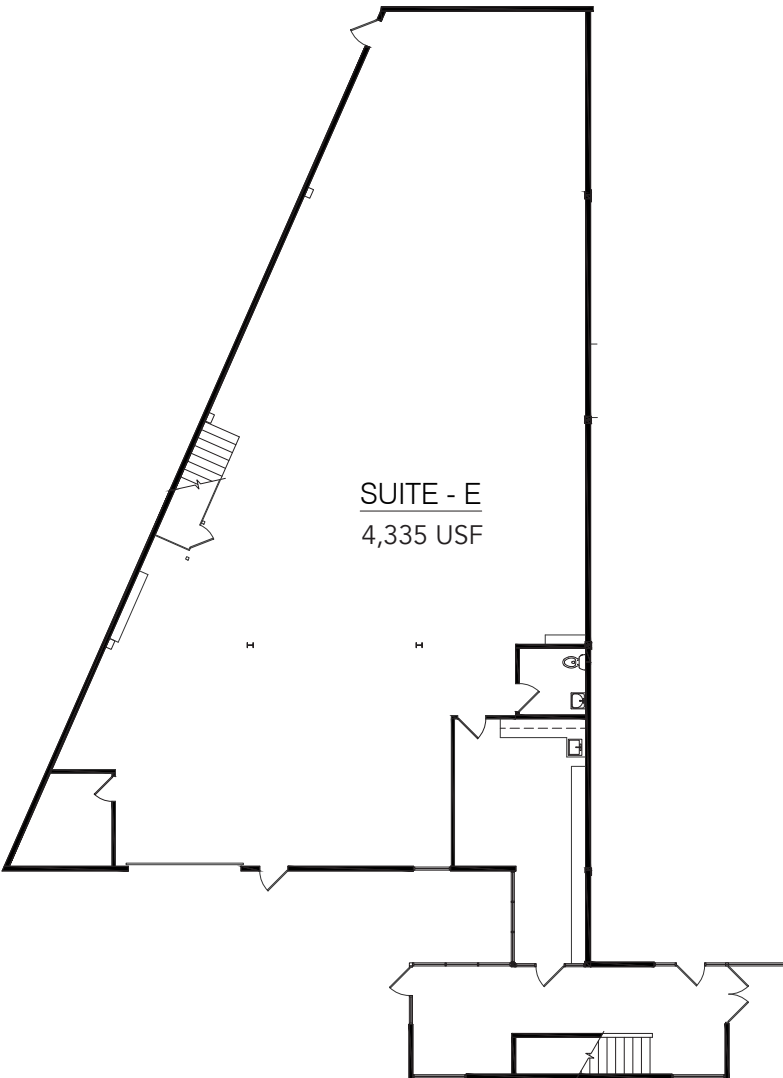


## 2nd FLOOR

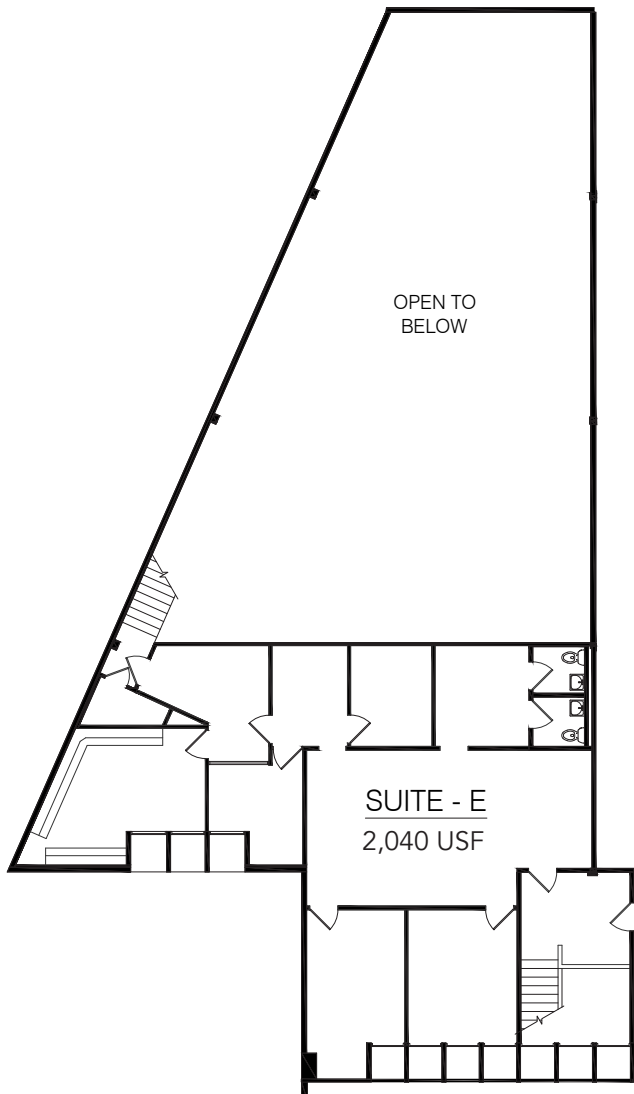


# FLOOR PLAN | 5741 BUCKINGHAM SUITE E

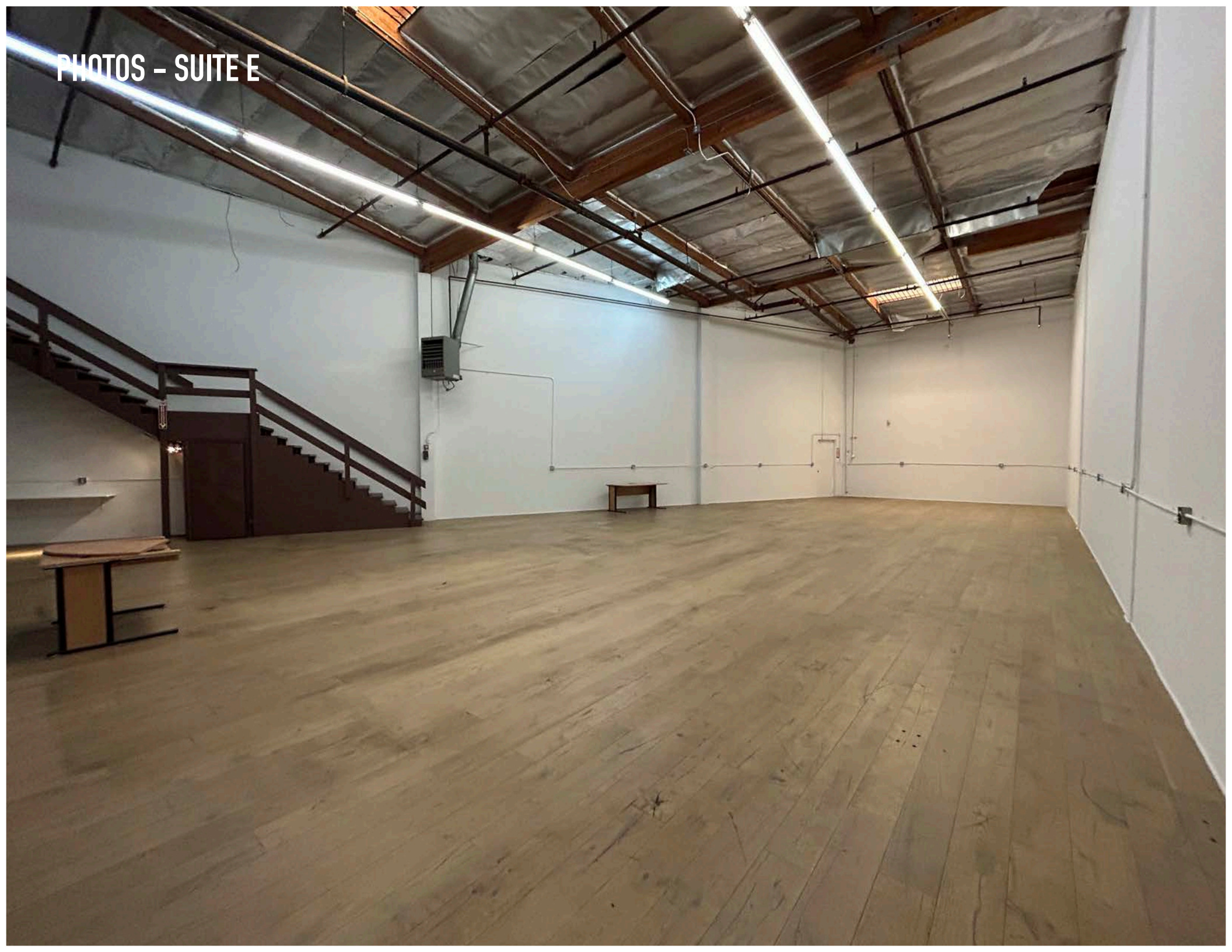
## 1st FLOOR



## 2nd FLOOR



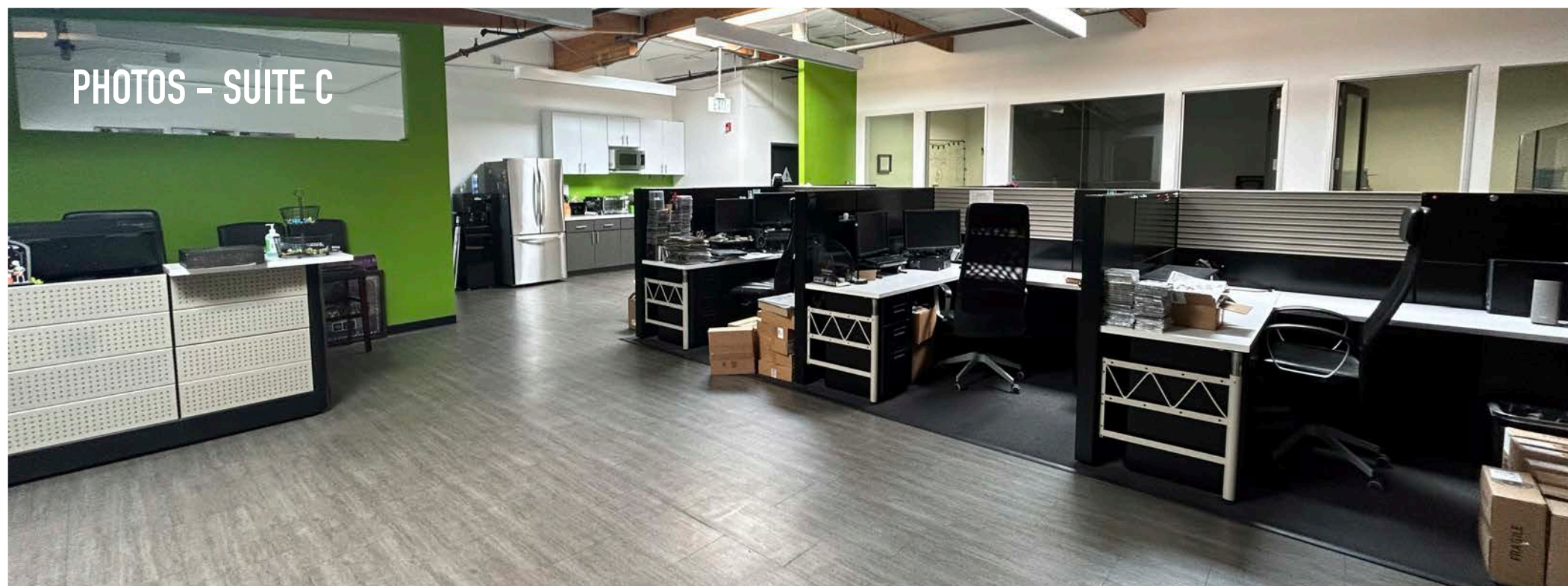
PHOTOS - SUITE E



PHOTOS - SUITE C



PHOTOS - SUITE C



# SITE MAP



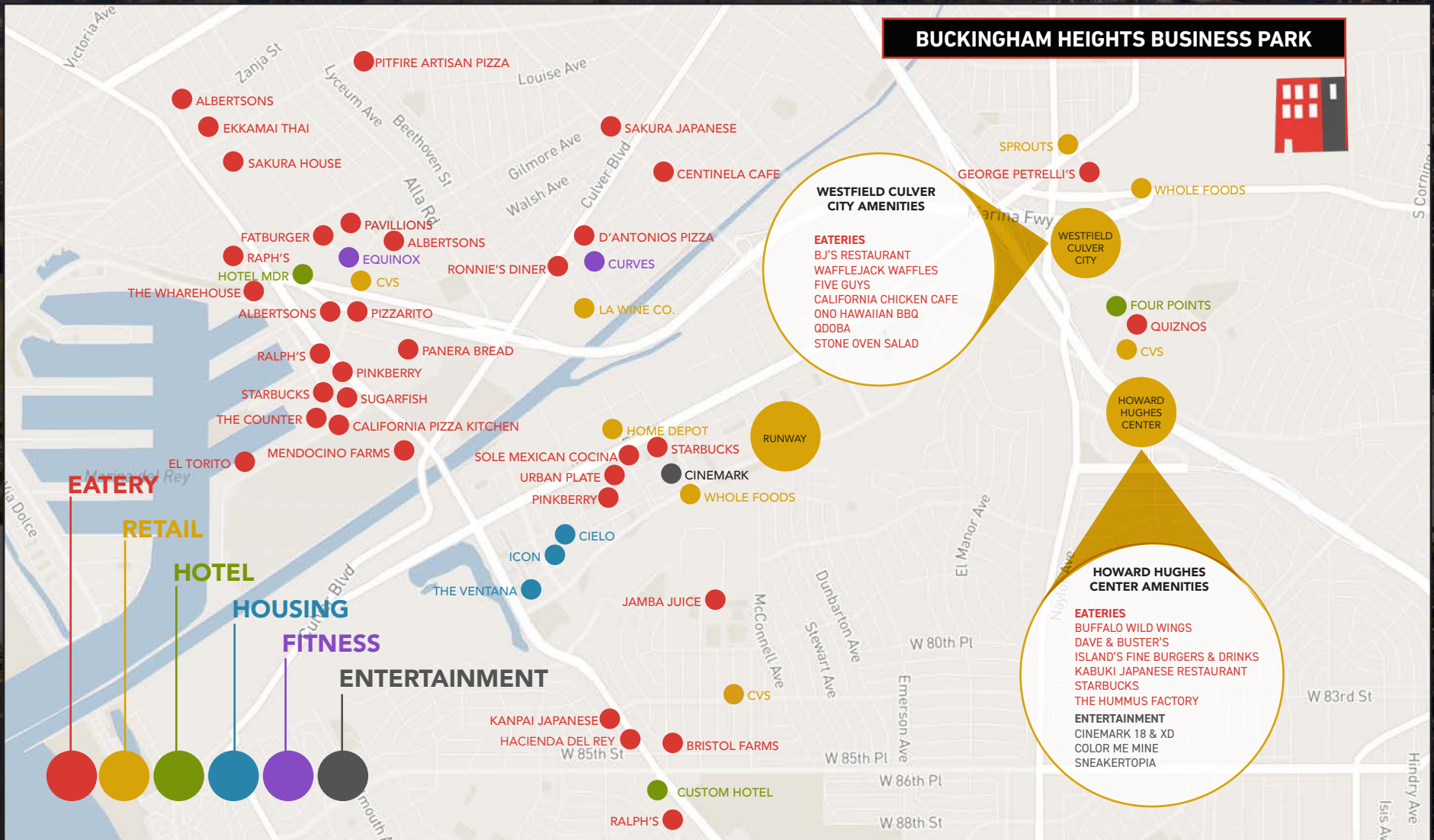
A DIVISION OF



LEE &  
ASSOCIATES



# AMENITY MAP





**Aleks Trifunovic, SIOR**  
President  
310.899.2721  
atrifunovic@leewestla.com  
BKR DRE 01363109

**Tommy Isola**  
Principal  
310.899.2709  
tisola@leewestla.com  
AGT DRE 01974024

**Adam Levine**  
Associate  
310.899.2703  
alevine@leewestla.com  
AGT DRE 02104830

Lee & Associates Los Angeles West, Inc.  
1508 17th Street, Santa Monica, CA  
310.899.2700 | www.leewestla.com | DRE 01222000

No warranty or representation is made to the accuracy of the foregoing information.