

**INDUSTRIAL UNIT
SHORT-TERM LEASE**



**4935 - 4943 MCCONNELL AVENUE
LOS ANGELES, CA 90066**

SPACE 4935 McConnell Ave: Unit 8 ± 2,716 SF
4935 McConnell Ave: Unit 18 ± 2,200 SF

RENT \$2.60 /SF IG (CAM est. \$0.22/SF)

OCCUPANCY Immediate

TERM Short term until June 30,2024

PARKING 1/1,000

FEATURES

- Rare Small Industrial Units on the West Side
- Drive-In Roll Up Doors
- Direct Access to LAX via Lincoln Blvd
- Adjacent to the 90 Freeway and Easily Accessible from the 405
- Minutes from Downtown Culver City via Culver Blvd
- Reach Playa Del Rey and Marina Del Rey in a Few Short Minutes

CONTACT

Aleks Trifunovic, SIOR 310.899.2721 atrifunovic@leewestla.com BKR DRE 013631095	Adam Levine 310.899.2703 alevine@leewestla.com AGT DRE 02104830
---	---

Sofia Kristiansen
310.899.2718
skristiansen@leewestla.com
AGT DRE 02219316



1508 17th Street, Santa Monica, CA | 310.899.2700
WWW.LEEWESTLA.COM | DRE 01222000

No warranty or representation is made to the accuracy of the foregoing information. Terms of sale or lease are subject to change or withdrawal without notice.



4935 - 4943 MCCONNELL AVENUE
LOS ANGELES, CA 90066

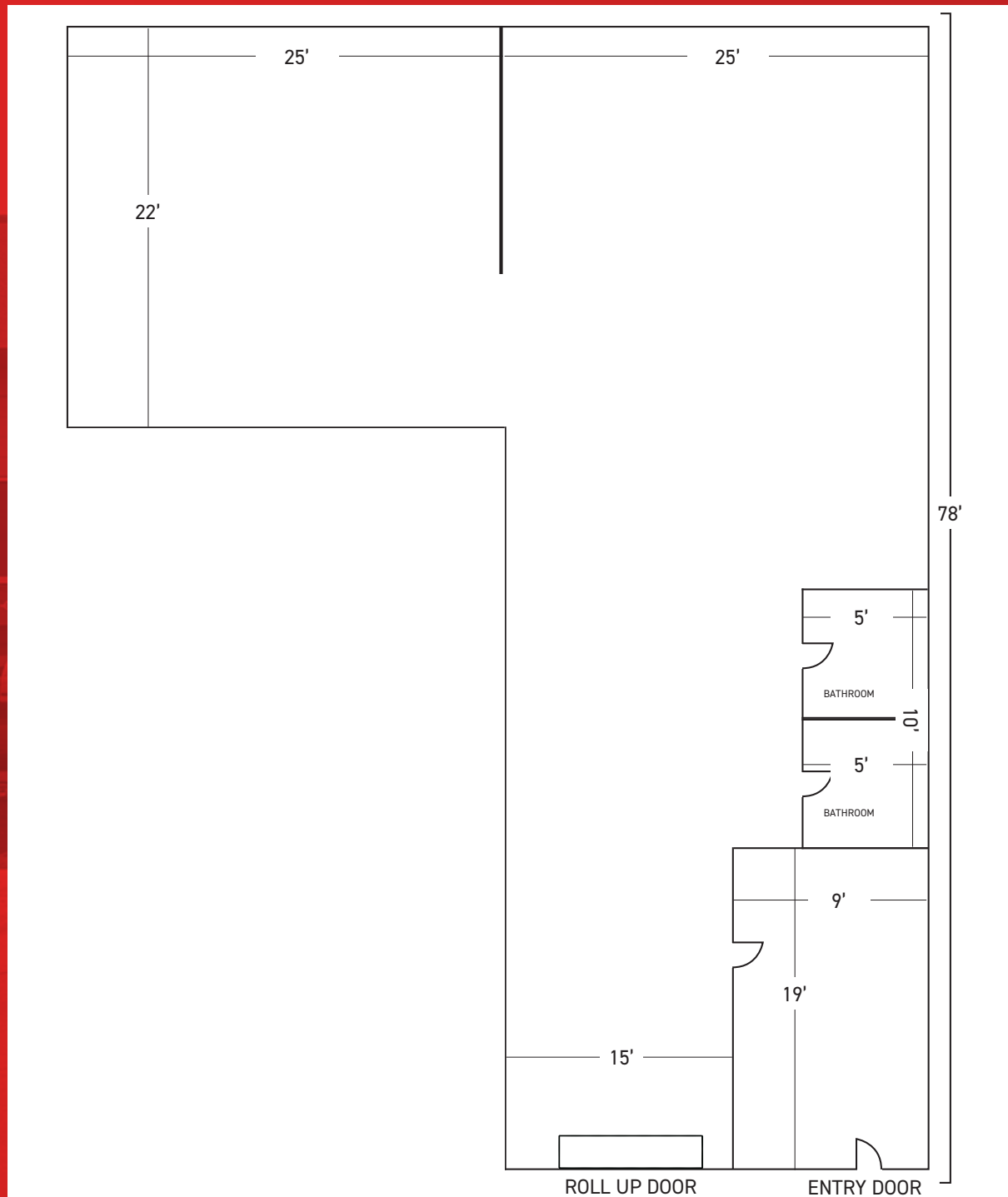


A DIVISION OF
LEE & ASSOCIATES

Aleks Trifunovic, SIOR
310.899.2721
atrifunovic@leewestla.com
BKR DRE 013631095

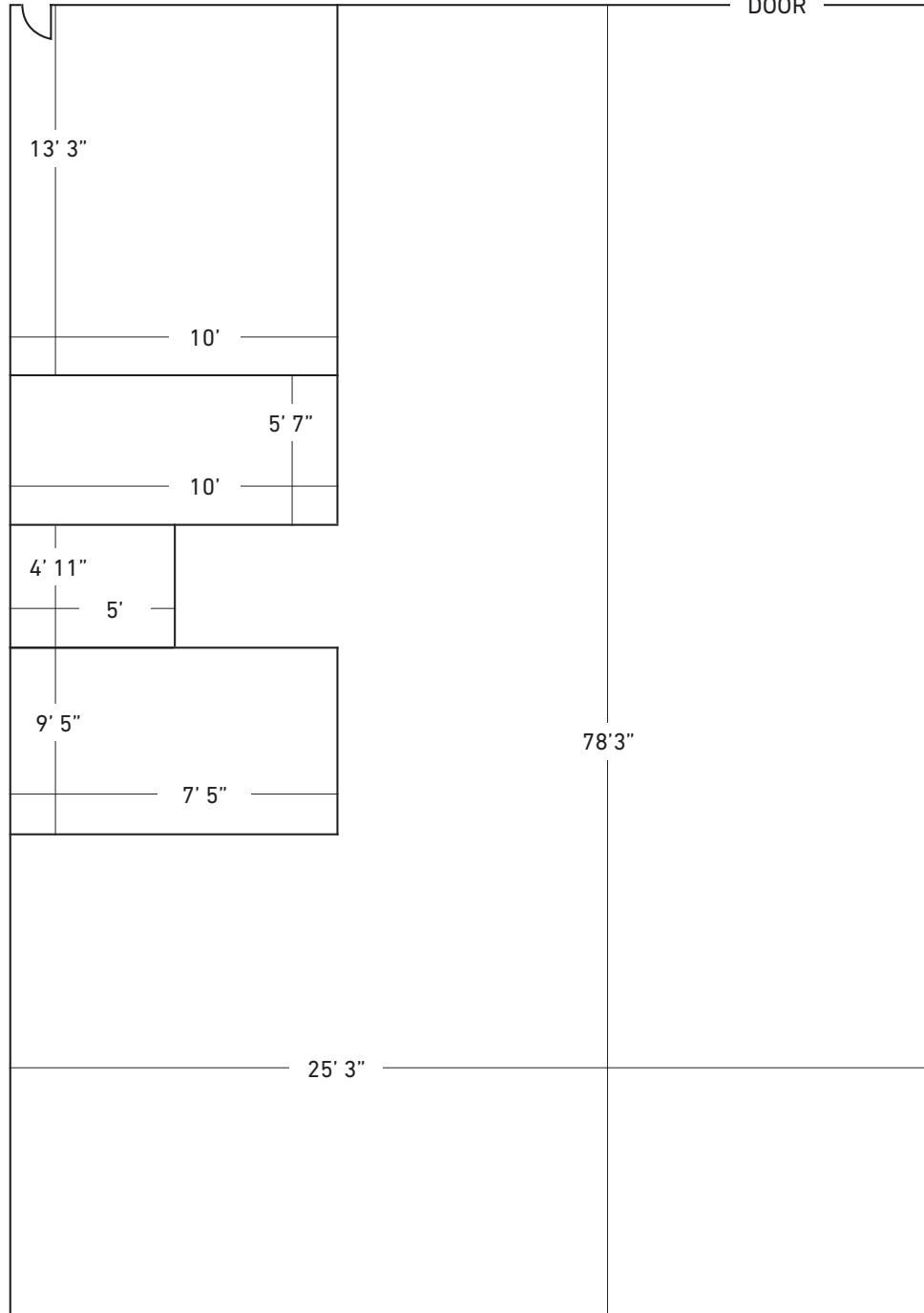
Sofia Kristiansen
310.899.2718
skristiansen@leewestla.com
AGT DRE 02219316

Adam Levine
310.899.2703
alevine@leewestla.com
AGT DRE 02104830



ENTRY DOOR

9' 5" W
DOOR



AERIAL MAP



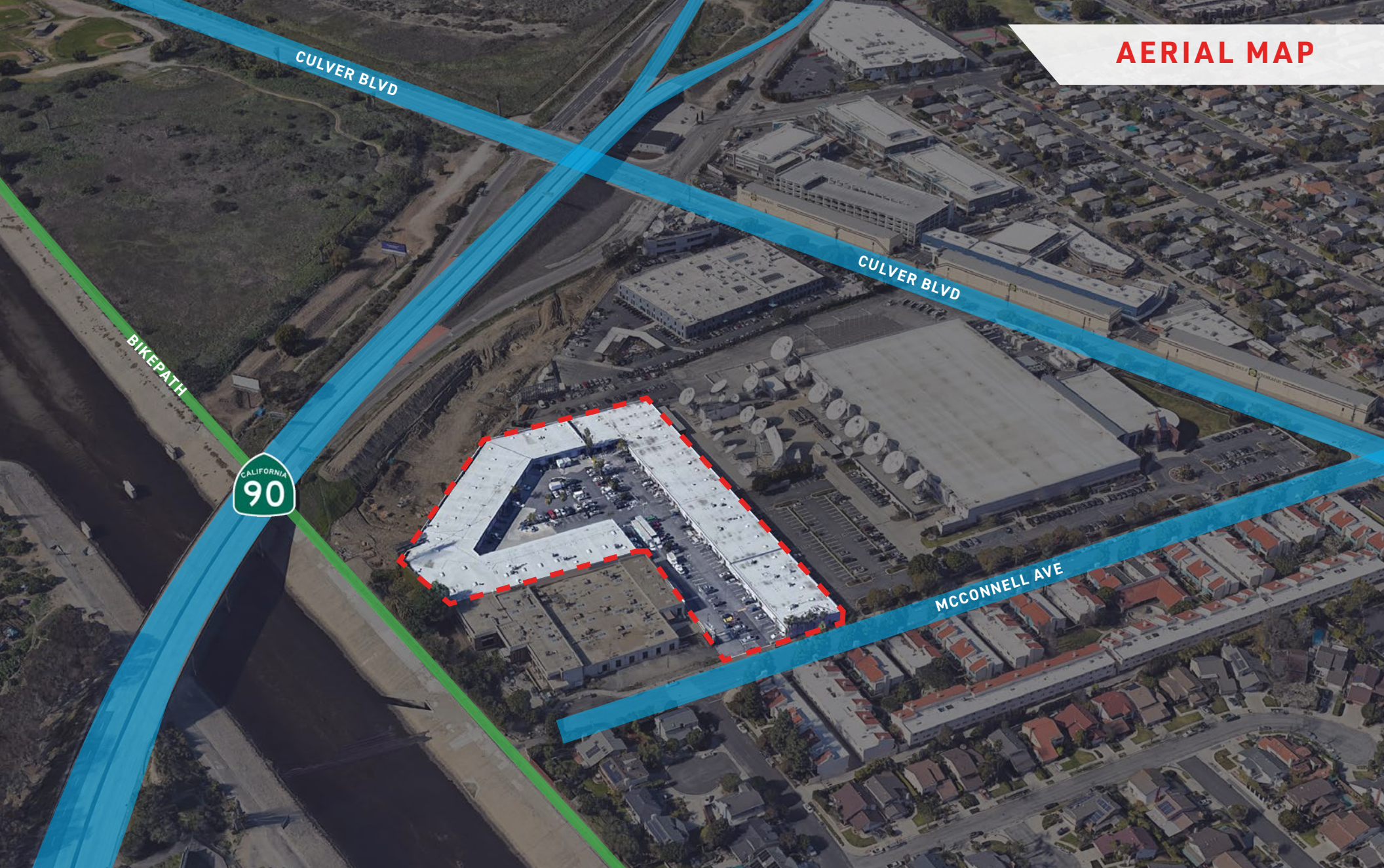
A DIVISION OF
LEE & ASSOCIATES

Aleks Trifunovic, SIOR
310.899.2721
atrifunovic@leewestla.com
BKR DRE 013631095

Sofia Kristiansen
310.899.2718
skristiansen@leewestla.com
AGT DRE 02219316

Adam Levine
310.899.2703
alevine@leewestla.com
AGT DRE 02104830

AERIAL MAP



A DIVISION OF
**LEE &
ASSOCIATES**

Aleks Trifunovic, SIOR
310.899.2721
atrifunovic@leewestla.com
BKR DRE 013631095

Sofia Kristiansen
310.899.2718
skristiansen@leewestla.com
AGT DRE 02219316

Adam Levine
310.899.2703
alevine@leewestla.com
AGT DRE 02104830