

11605-11609

W WASHINGTON PLACE
LOS ANGELES, CA 90066



FOR LEASE: RETAIL/OFFICE



A DIVISION OF
LEE & ASSOCIATES

11605 - 11607 W WASHINGTON PLACE



PREMISES: 11605: ± 600 SF

USE: Retail

RENT: \$4.85 NNN (NNN ± \$0.77)

TERM: 3-5 Years

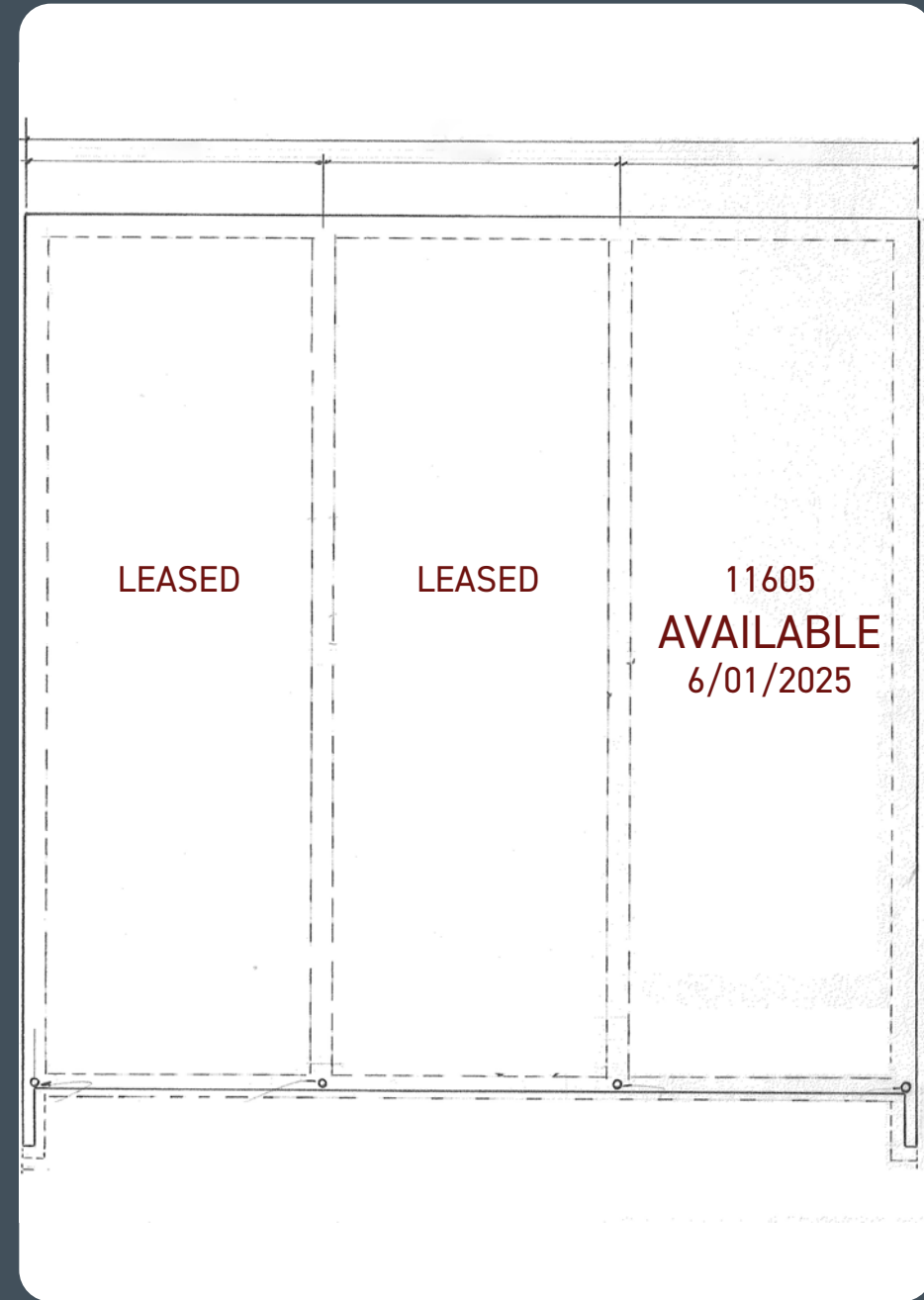
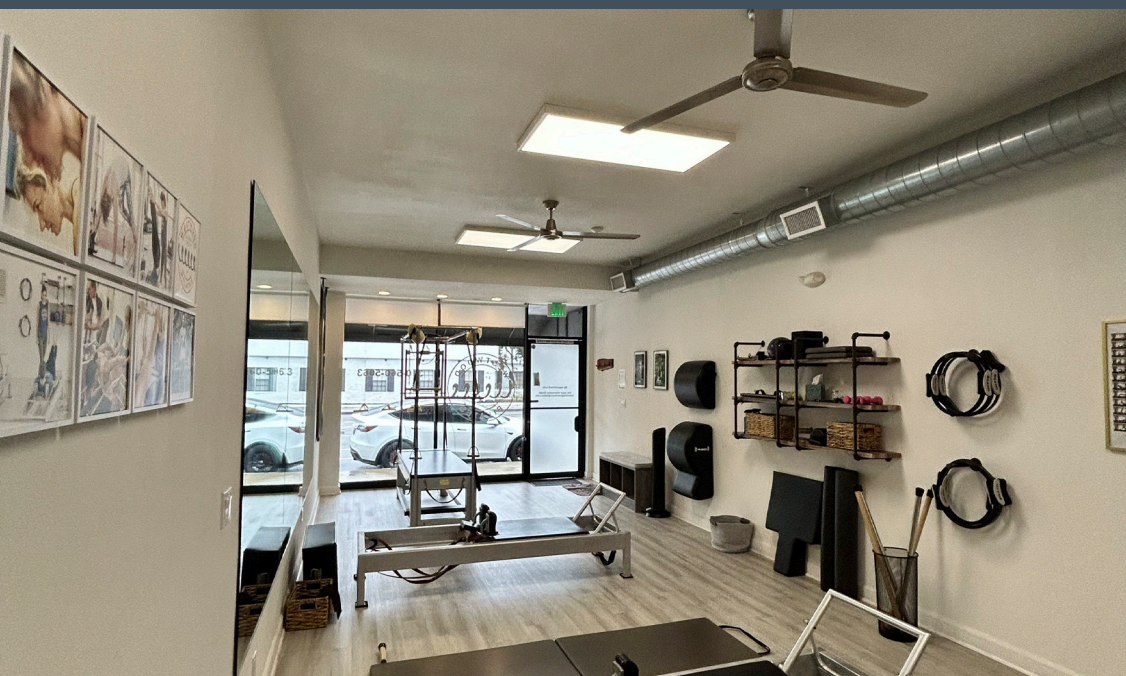
OCCUPANCY: June 1, 2025

PARKING: 1 Tenant Space
Abundant Street Parking

FEATURES:

- Excellent west side location
- Suitable for small commercial business or office
- Great visibility and signage

SUITE 11605 - INTERIOR PHOTOS



AREA DEMOGRAPHICS



2024 POPULATION

1 Mile
43,468
3 Miles
272,441
5 Miles
716,232



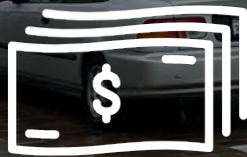
2029 PROJECTION

1 Mile
42,342
3 Miles
266,135
5 Miles
701,628



2021 MEDIAN AGE

1 Mile
38.6
3 Miles
39.3
5 Miles
39.2



AVG HOUSEHOLD INCOME

1 Mile
\$116,872
3 Miles
\$141,262
5 Miles
\$128,197



INCOME OVER \$200K

1 Mile
3,069
3 Miles
29,720
5 Miles
66,646



AVG HOUSEHOLD VALUE

1 Mile
\$1,103,786
3 Miles
\$1,102,372
5 Miles
\$1,073,642

AREA OVERVIEW



LA Tech & Start-Up Community

Los Angeles is the third-largest market for venture capital investment in the United States, with \$4.2 billion invested in the last year alone, and it's perhaps the market where capital commitments are increasing at the fastest pace. Silicon Beach is also home to a number of start-up incubators and accelerators, such as Amplify.LA, Science, Idealab, Disney Accelerator, and TechStars Cedars Sinai. Local distinguished higher education institutions headquartered in and around Silicon Beach include Loyola Marymount University and Otis College of Art and Design, California Institute of Technology, University of California Los Angeles, and University of Southern California. Los Angeles graduates more engineers than any other American urban center with students of broad, diverse backgrounds, gender, and racial diversity.

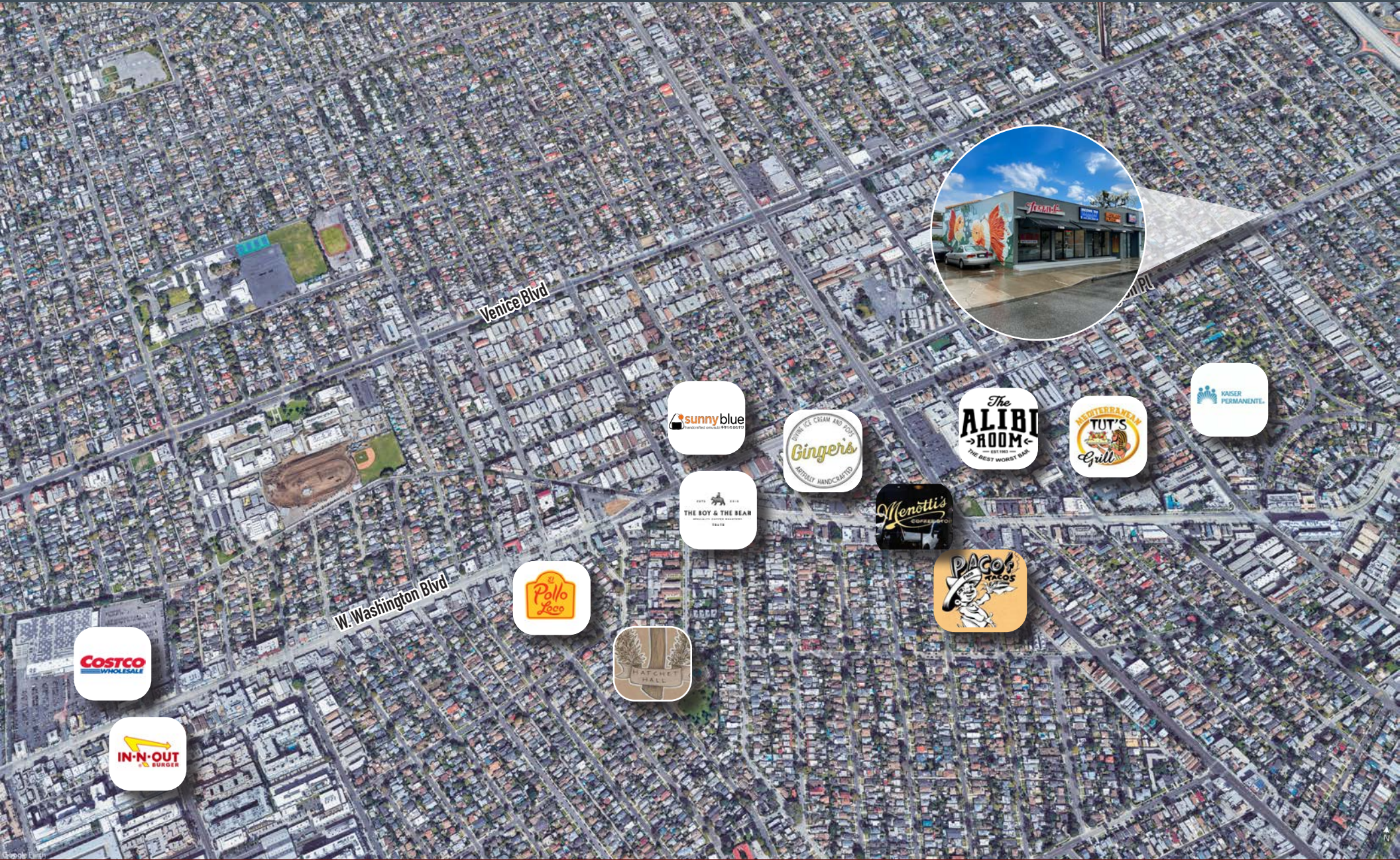
The Rise of Silicon Beach

Silicon Beach is The Oliver's neighboring Westside region of the Los Angeles metropolitan area that is home to over 500 tech companies. A few major technology companies who have set up offices in Silicon Beach include Google, Yahoo!, YouTube, SnapChat, Facebook, Twitter, BuzzFeed, AOL, Electronic Arts, and Tesla. The Region is one of the fastest growing hubs in the world for tech start-ups. What separates Silicon Beach from Silicon Valley is the confluence of technology and entertainment. Apple, Amazon, HBO have recently planned over 500,000 SF of creative space to build out original content studios.

REGIONAL MAP



RETAILERS & AMENITIES



SPENCER HORAK

310.899.2728

shorak@leewestla.com

AGT DRE 01921906



A DIVISION OF



LEE &
ASSOCIATES

Lee & Associates Los Angeles West, Inc.
1508 17th Street, Santa Monica, CA 90404
www.leewestla.com | DRE 01222000