

6374 ARIZONA CIRCLE

Los Angeles, CA 90045

6374 ARIZONA CIRCLE
VIRTUAL TOUR

±8,100 SF Class A
Creative Office For Lease





THE OFFERING

Lee & Associates is pleased to present the opportunity to lease an approximately 8,100 SF creative office located at 6374 Arizona Circle in Los Angeles, CA. The opportunity for a tenant to occupy the entirety of the space. Ideally located between Playa Vista, Culver City, and El Segundo/LAX, this high-image property is in excellent “turnkey” condition with natural light, operable windows, covered outdoor seating areas and private restrooms.

The Premises can be leased along with the adjacent building at 6368 Arizona Circle (7,000 SF) for a combined 15,100 SF.

[Click for 6368 Arizona Circle Brochure](#)



PREMISES

± 8,100 SF Building
± 13,950 SF Land

LEASE RATE

Call Agent for Lease Rate

PARKING

15 Total Parking Spaces (\$150/Space/Month)

ZONING

LAM1

FEATURES

- Fully Remodeled Creative Office
- Single Tenant Building
- Modern Amenities
- Adjacent to Silicon Beach
- Minutes from Amenities at Westfield Mall & the Runway

CONTACT

Brad McCoy
310.899.2730
bmccoy@leewestla.com
BKR DRE 01938098

David Wilson
310.899.2707
dwilsoon@leewestla.com
AGT DRE 00822760

Keith Fielding
310.899.2719
kfielding@leewestla.com
AGT DRE 01729915

Dylan Mahood
310.899.2706
dmahood@leewestla.com
AGT DRE 02027002

George Wilson
310.899.2738
gwilson@leewestla.com
AGT DRE 02090678

Conor Halloran
310.899.2724
challoran@leewestla.com
AGT DRE 02085970

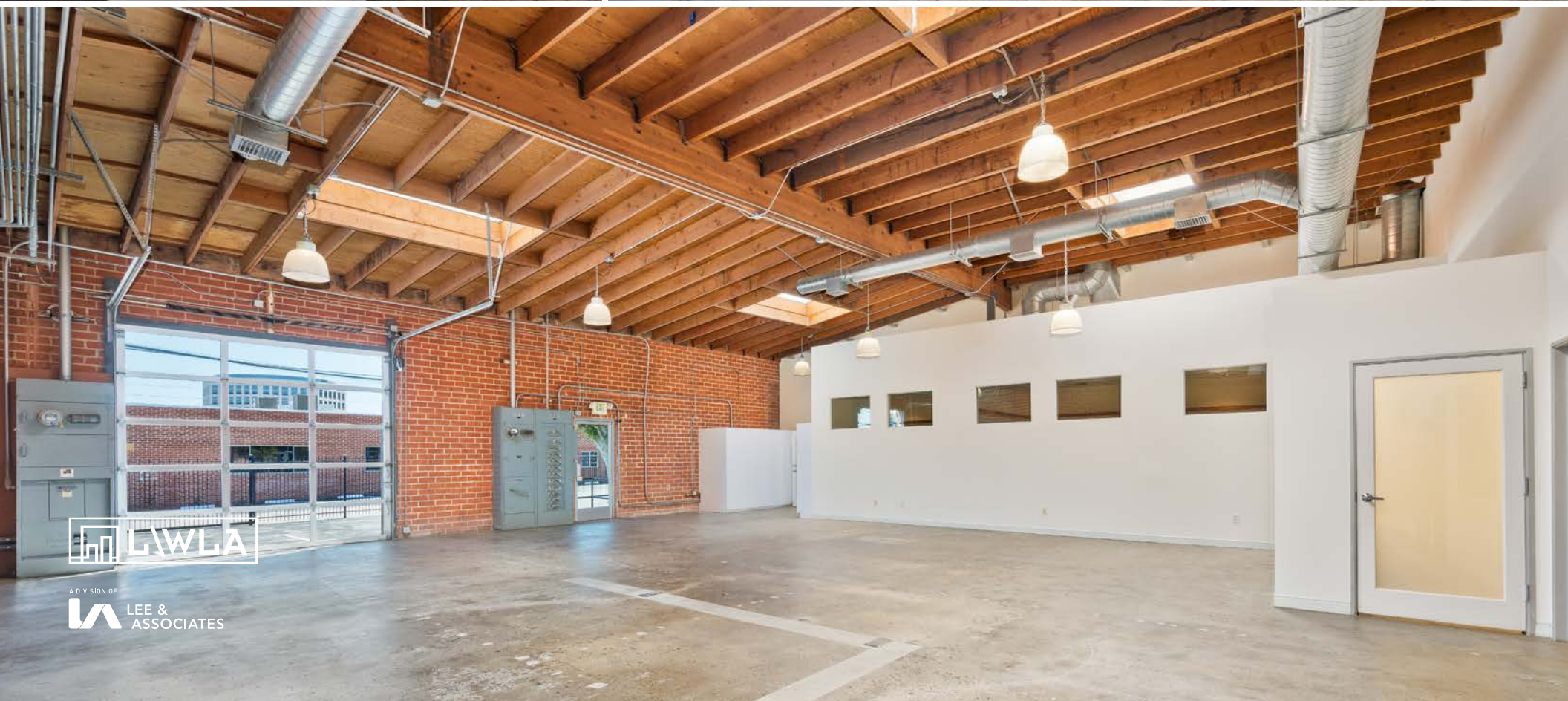


A DIVISION OF
LEE & ASSOCIATES

1508 17th Street, Santa Monica, CA | 310.899.2700
WWW.LEEWESTLA.COM | DRE 01222000

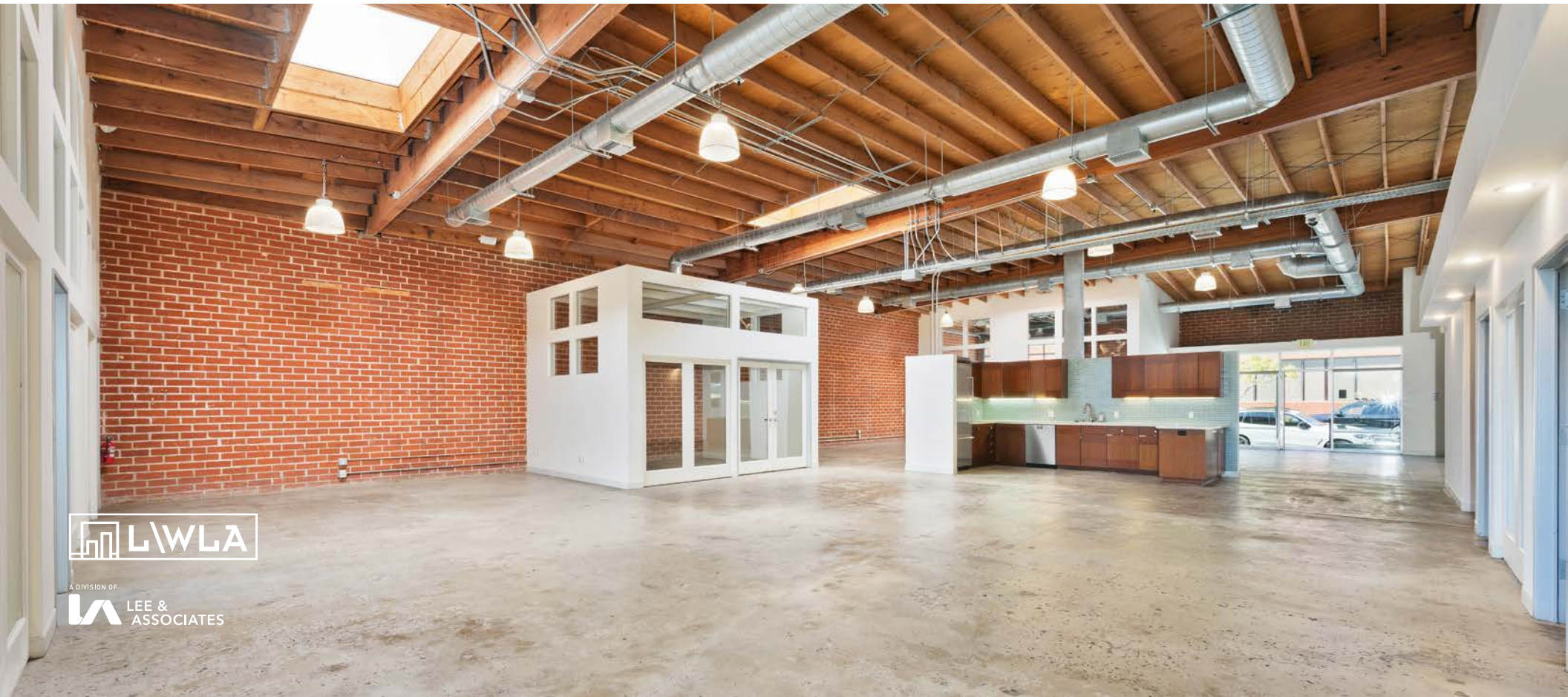
No warranty or representation is made to the accuracy of the foregoing information.
Terms of sale or lease are subject to change or withdrawal without notice.

INTERIOR PHOTOS



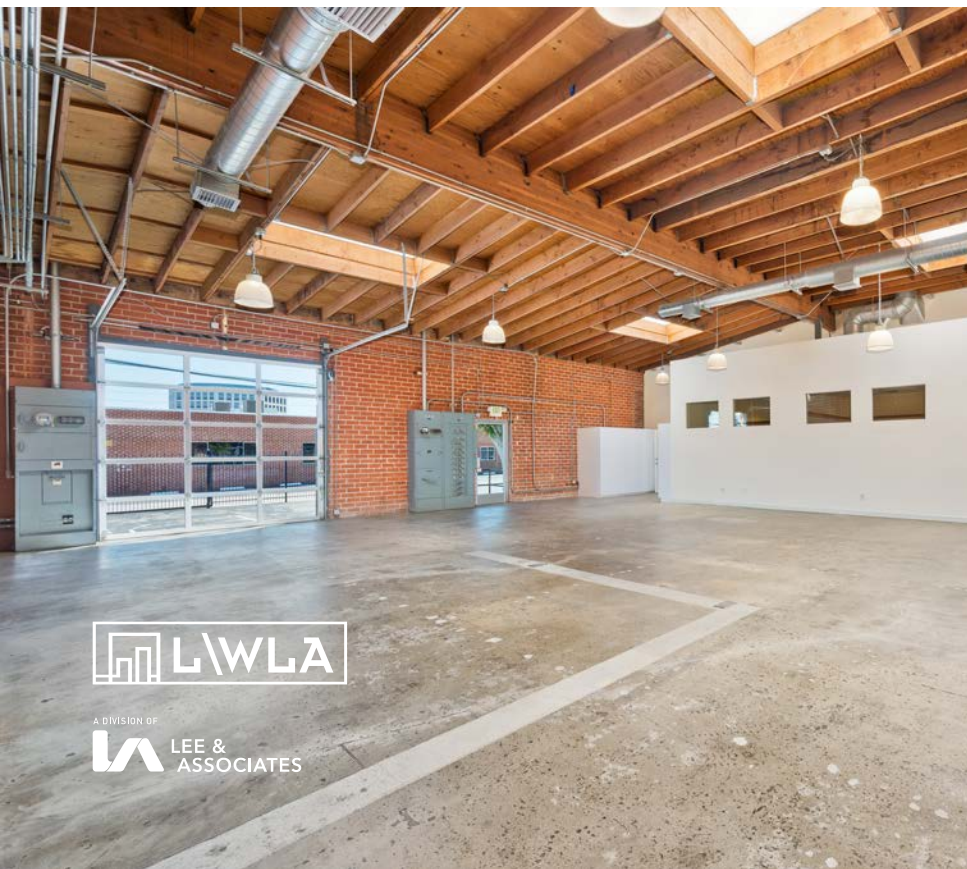
A DIVISION OF
LEE & ASSOCIATES

INTERIOR PHOTOS



A DIVISION OF
LEE & ASSOCIATES

INTERIOR PHOTOS

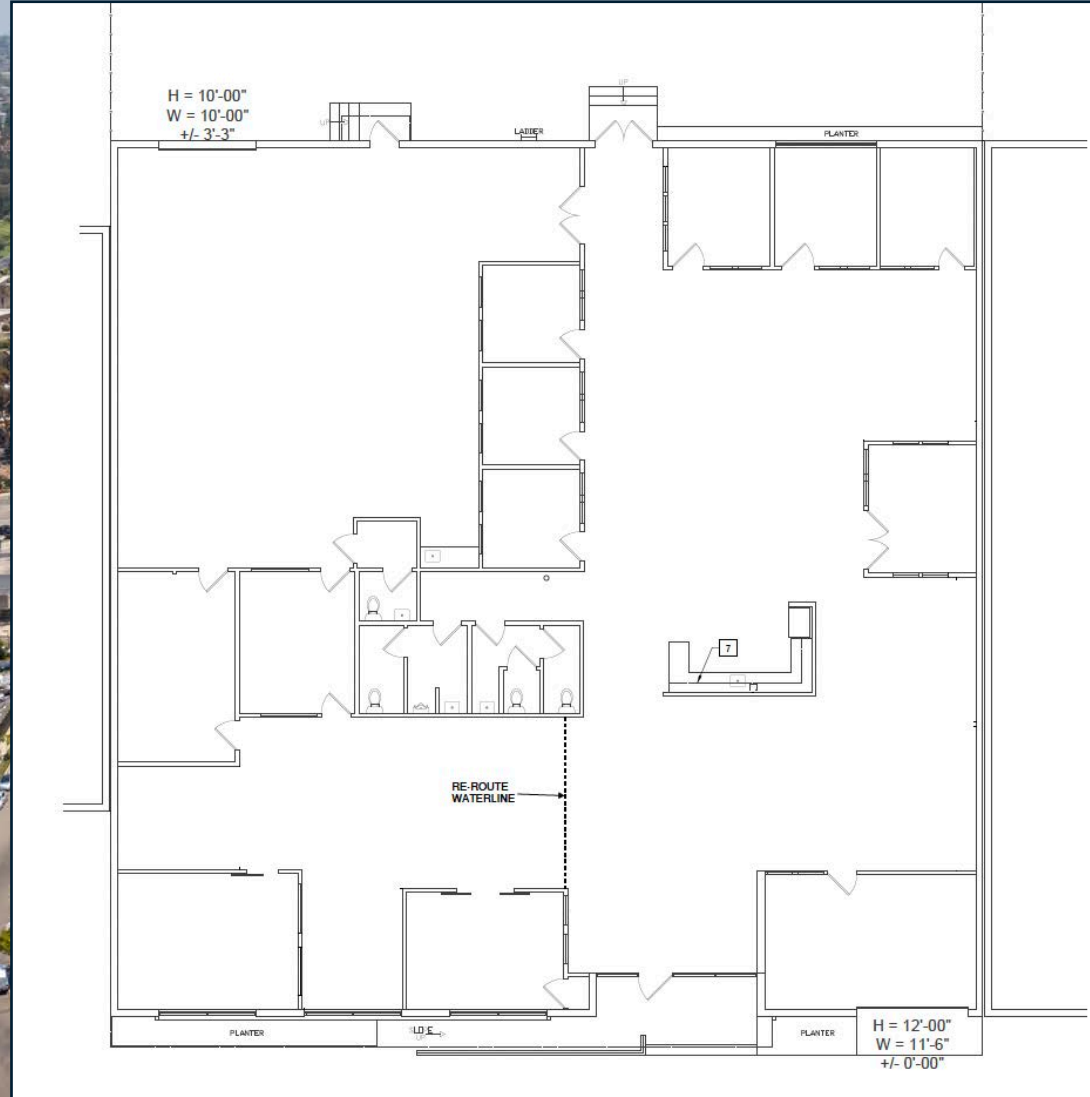


A DIVISION OF
LEE & ASSOCIATES

EXTERIOR PHOTOS



FLOOR PLAN



A DIVISION OF
LEE & ASSOCIATES

BIRDS EYE OVERVIEW



A DIVISION OF
LA LEE & ASSOCIATES

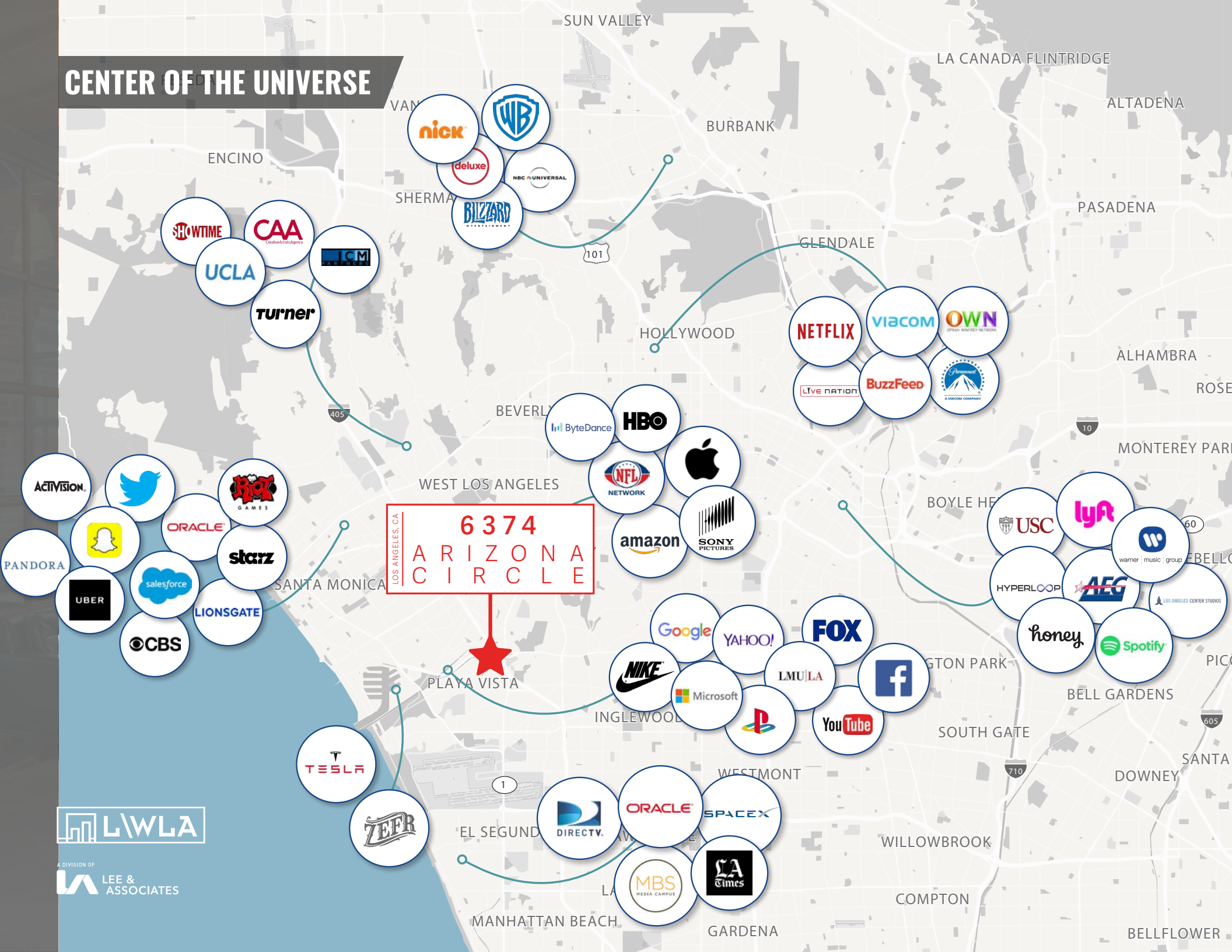
NOTABLE NEIGHBORS



LOS ANGELES, CA
6368
ARIZONA
CIRCLE



CENTER OF THE UNIVERSE



6374
ARIZONA
CIRCLE
LOS ANGELES, CA

LWLA

A DIVISION OF
LEE & ASSOCIATES



A DIVISION OF



Brad McCoy

310.899.2730

bmccoy@leewestla.com

AGT DRE 01938098

Dylan Mahood

310.899.2706

dmahood@leewestla.com

AGT DRE 02027002

David Wilson

310.899.2707

dwilsoon@leewestla.com

AGT DRE 00822760

George Wilson

310.899.2738

gwilson@leewestla.com

AGT DRE 02090678

Keith Fielding

310.899.2719

kfielding@leewestla.com

AGT DRE 01729915

Conor Halloran

310.899.2724

challoran@leewestla.com

AGT DRE 02085970

© 2021 Lee & Associates Los Angeles West, Inc. All rights reserved. This information has been obtained from sources believed reliable, but has not been verified for accuracy or completeness. You should conduct a careful, independent investigation of the property and verify all information. Any reliance on this information is solely at your own risk. Lee & Associates and the Lee & Associates logo are service marks of Lee & Associates Los Angeles West, Inc. All other marks displayed on this document are the property of their respective owners, and the use of such logos does not imply any affiliation with or endorsement of Lee & Associates. Photos herein are the property of their respective owners. Use of these images without the express written consent of the owner is prohibited.