

1460 4TH STREET

SANTA MONICA, CA 90401

FOR LEASE



SPECS

PREMISES

Suite 210 ± 2,127 SF
Suite 300 ± 1,400 SF

RENT

\$2.75/SF, FSG

OCCUPANCY

Suite 210 - July 1, 2025
Suite 300 - 30 Days

TERM

3 - 5 Years

PARKING

5 Spaces/1,000 SF
Located in Parking Structure Adjacent to Building

CONTACTS

James Wilson
310-899-2708
jwilson@leewestla.com
AGT DRE 00883324

Dylan Mahood, CCIM
310-899-2706
dmahood@leewestla.com
AGT DRE 02027002

David Wilson
310.899.2707
dwilson@leewestla.com
AGT DRE 00822760

FEATURES

- Move In Ready
- Hardwood Flooring, Operable Windows and Recessed Lighting
- Kitchen
- Urban Loft Look
- Some with Exposed Ceilings
- Steps from the Third Street Promenade and Santa Monica Place, with Excellent Retail and Restaurants in Walking Distance
- Blocks from the new Santa Monica Expo Line
- Within Five (5) Minutes of the Santa Monica Freeway



A DIVISION OF

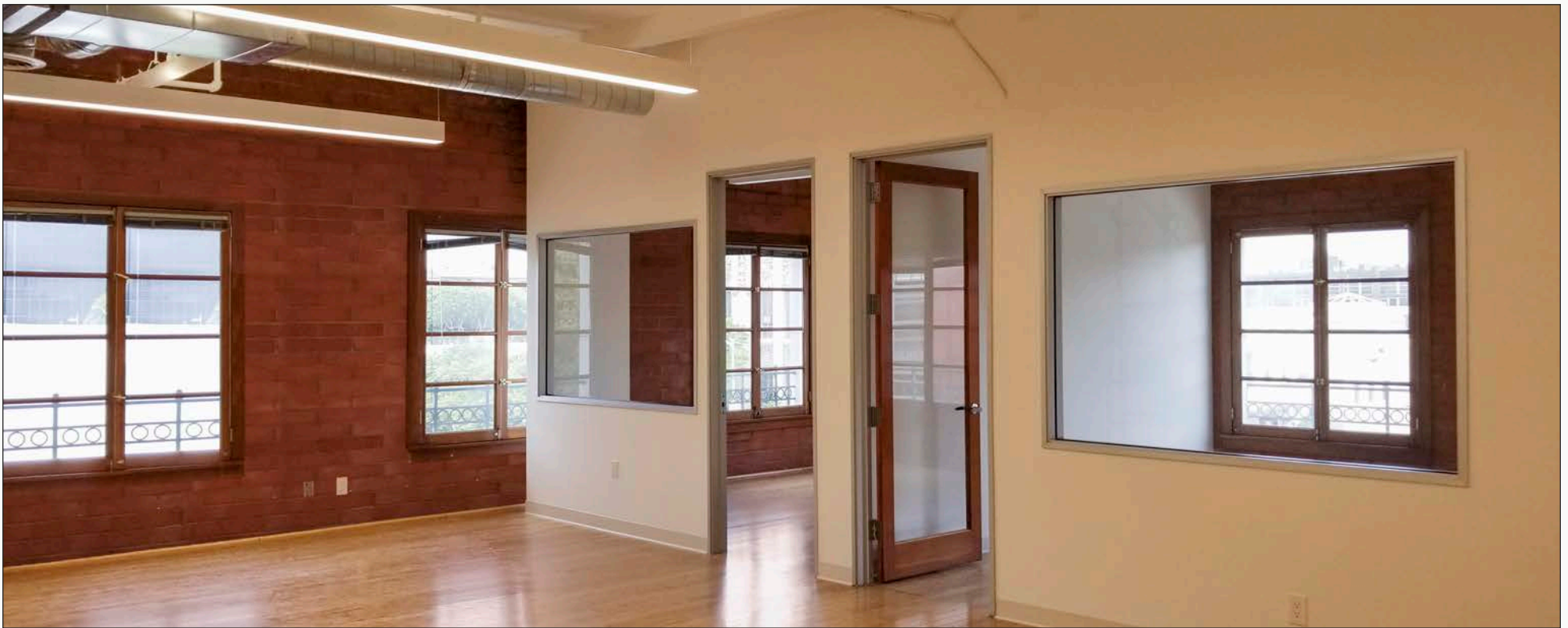


No warranty or representation is made to the accuracy of the foregoing information. Terms of sale or lease are subject to change or withdrawal without notice.

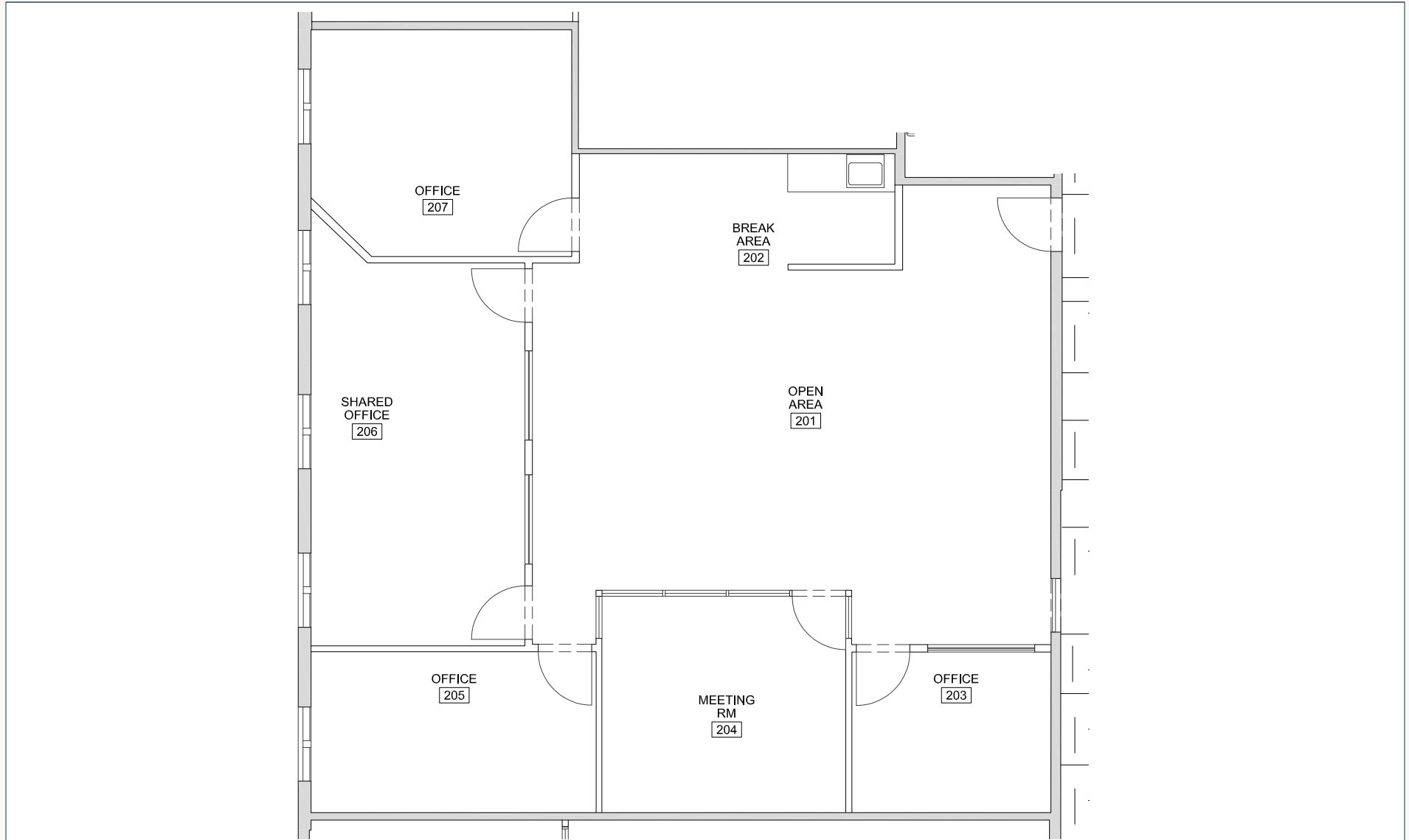
SUITE 210



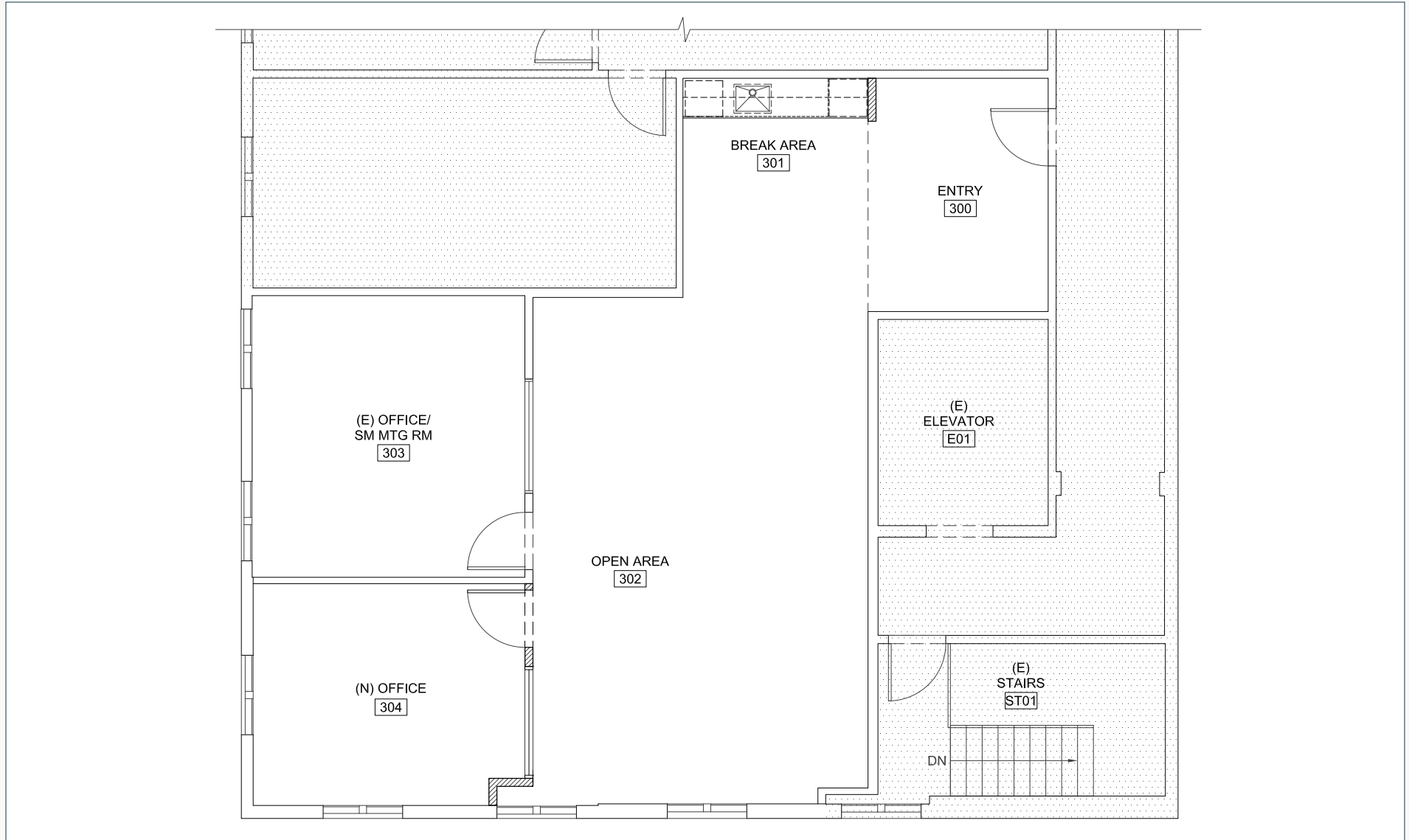
SUITE 300



SUITE 210 FLOOR PLAN



SUITE 300 FLOOR PLAN



NEARBY AMENITIES

CAFES/RESTAURANTS

- 1 Fig
- 2 Michaels
- 3 Orto
- 4 UOVO
- 5 Water Grill
- 6 Bay Cities Italian Deli & Bakery
- 7 Santa Monica Proper
- 8 Cassia
- 9 Hillstone
- 10 Wally's Wine
- 11 Elephante
- 12 Canary
- 13 Ivy at the Shore
- 14 Massilia
- 15 Meat on Ocean
- 16 Tu Madre
- 17 Philz Coffee
- 18 Starbucks
- 19 Steak 'n Shake
- 20 Sugarfish
- 21 Tar & Roses
- 22 Tender Greens
- 23 The Bungalow
- 24 The Misfit
- 25 Cava
- 26 North Italia
- 27 Lanea

FITNESS

- 28 Equinox
- 29 Orangetheory Fitness
- 30 SoulCycle
- 31 Coreology
- 32 Burn Fitness

33 3RD ST. PROMENADE

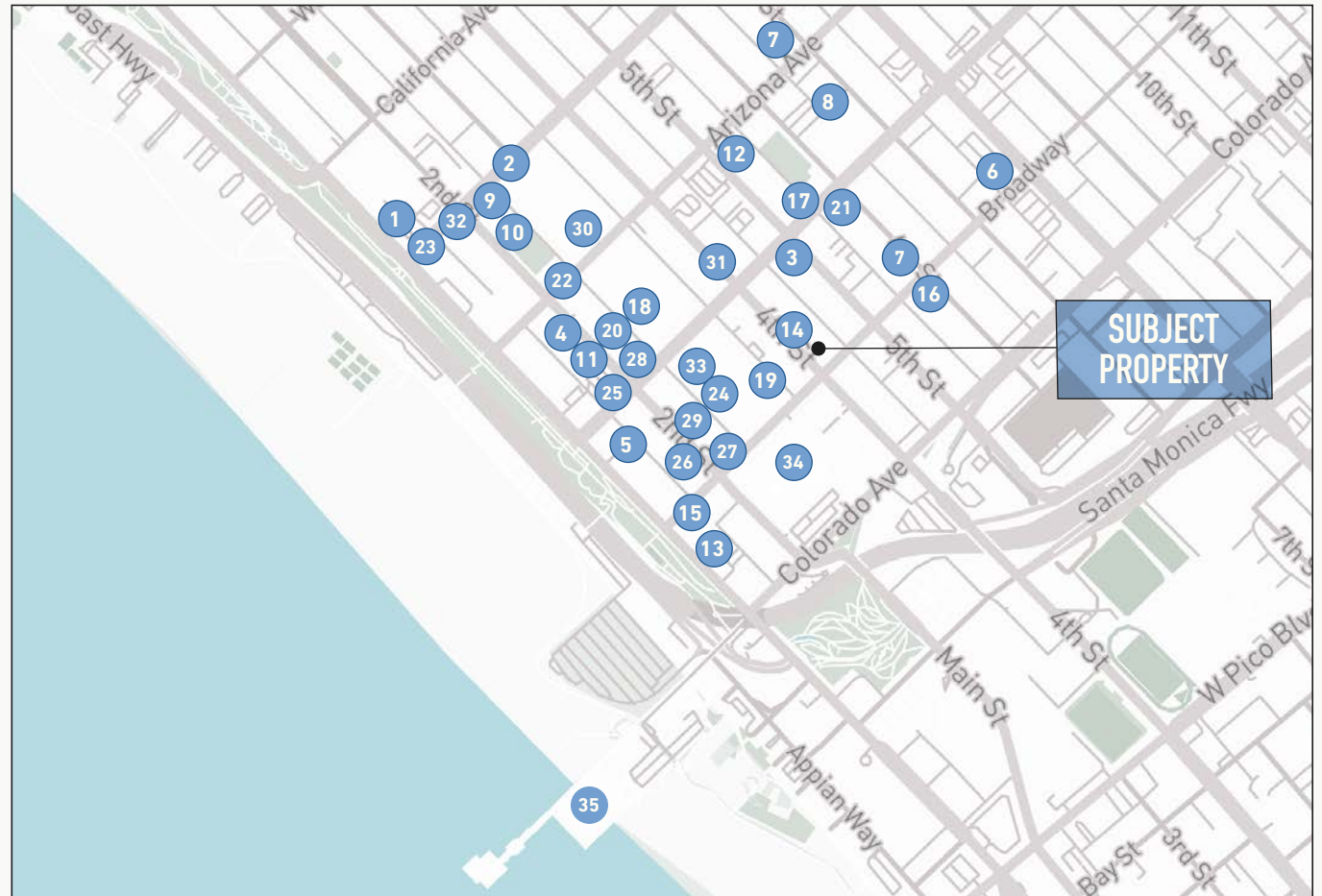
- Apple
- Lululemon
- Alo
- Sephora
- Anthropologie

34 SANTA MONICA PLACE

- Tesla
- Nordstrom
- Nike
- Louis Vuitton
- Peloton

35 SANTA MONICA PIER

- The Albright
- Rusty's Surf Ranch
- Seasidee on the Pier
- Maria Sol
- Coffee Bean & Tea Leaf



CONTACTS

JAMES WILSON

310.899.2708
jwilson@leewestla.com
AGT DRE 00883324

DYLAN MAHOOD, CCIM

310.899.2706
dmahood@leewestla.com
AGT DRE 02027002

DAVID WILSON

310.899.2707
dwilson@leewestla.com
AGT DRE 00822760

Lee & Associates Los Angeles West, Inc.
1508 17th Street, Santa Monica, CA 90404
www.leewestla.com | DRE 01222000



A DIVISION OF



LEE &
ASSOCIATES