

11751
MISSISSIPPI

INDUSTRIAL / FLEX SPACES FOR LEASE



A DIVISION OF



LEE &
ASSOCIATES

SUITE 170 ± 3,668 SF

SPECS & FEATURES

PREMISES

Suite 120: ± 1,136 SF **LEASED**

Suite 170: ± 3,668 SF

RENT

Suite 170: \$2.85/SF MG

OCCUPANCY

Immediate

TERM

1 - 3 Years

PARKING

Suite 170: 5 Spaces @ \$175/space

FEATURES

- Multi-Tenant Creative Office building located in the heart of West Los Angeles
- 2 private offices and 1 Conference room
- Private Back Unit Creative Space
- Private Outdoor Patio Space

CONTACT

Aleks Trifunovic, SIOR

President

310-899-2721

atrifunovic@leewestla.com

BRK DRE 01363109

James Wilson

Principal

310-899-2708

jwilson@leewestla.com

AGT DRE 00883324

Sofa Kristiansen

Associate

310-899-2718

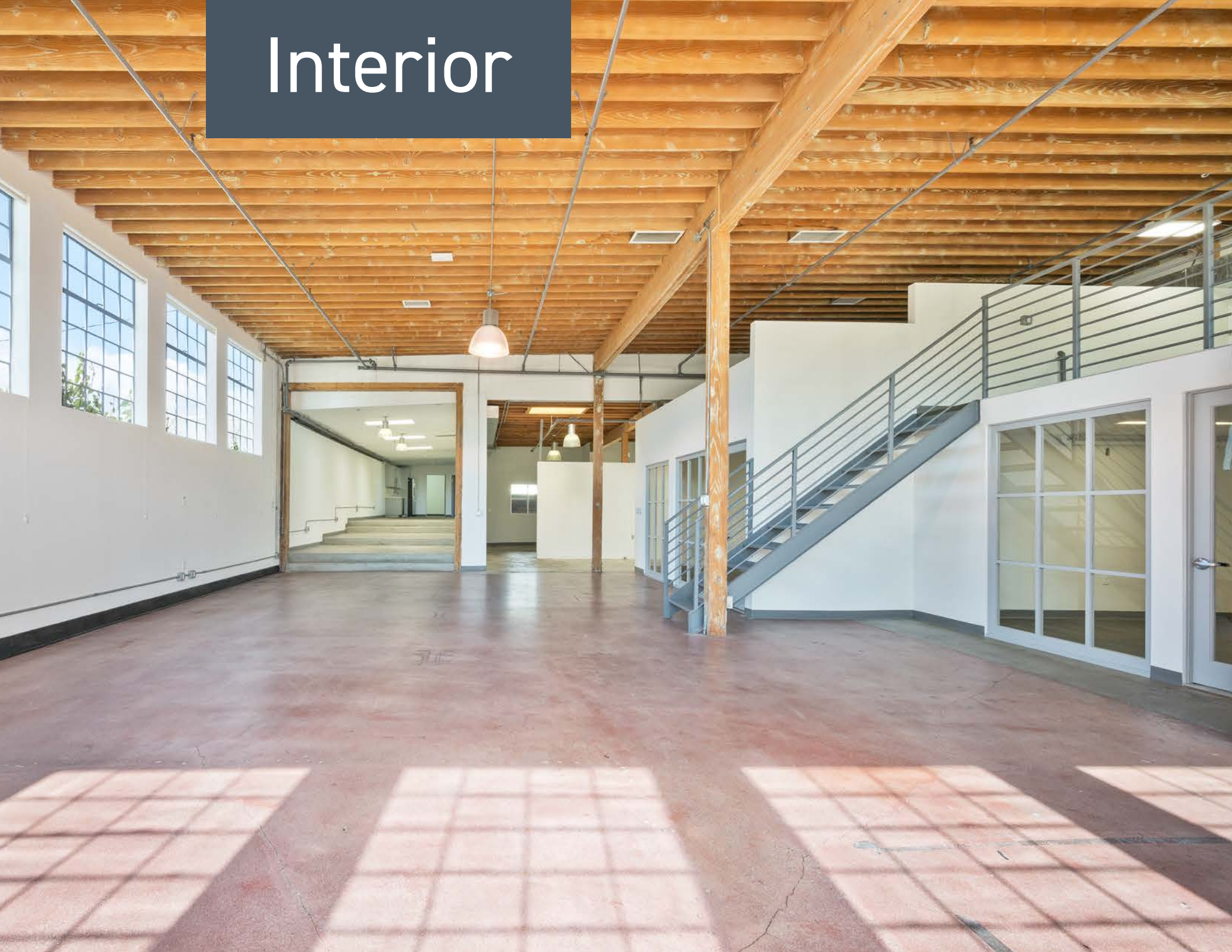
skristiansen@leewestla.com

AGT DRE 02219316



No warranty or representation is made to the accuracy of the foregoing information. Terms of sale or lease are subject to change or withdrawal without notice.

Interior





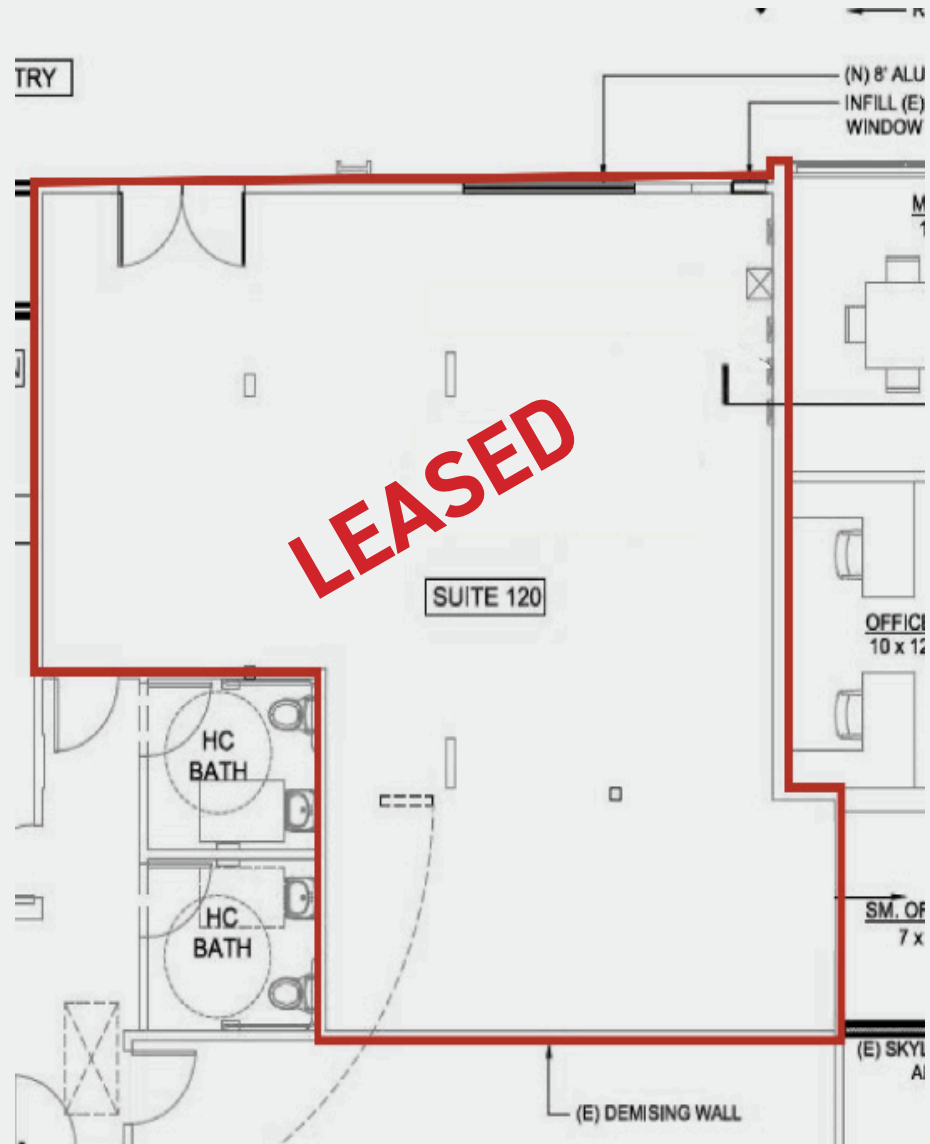
FOR LEASE

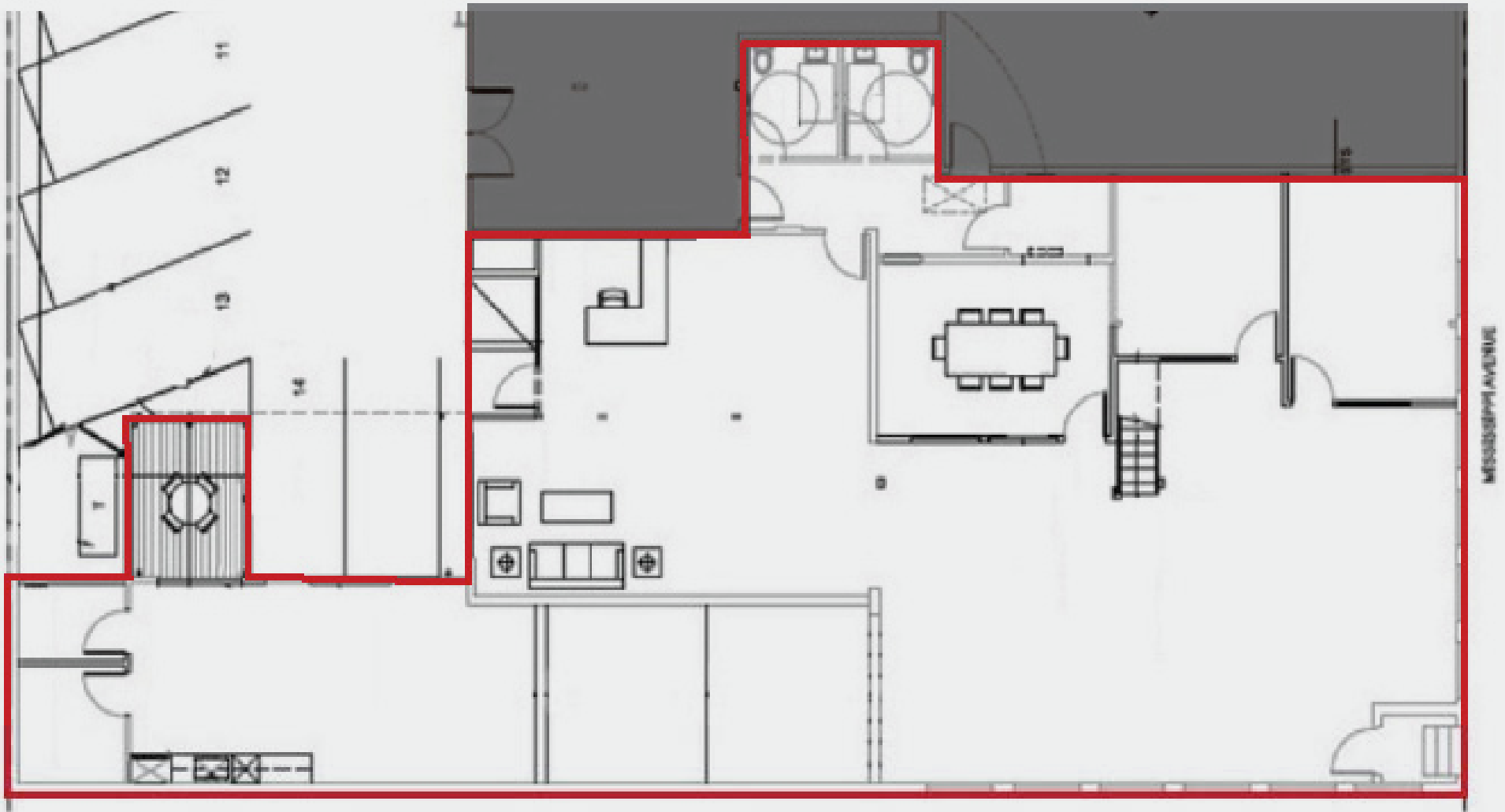
INTERIOR



FOR LEASE

EXTERIOR





17751
MISSISSIPPI

LA GRANGE AVE

MISSISSIPPI AVE

W OLYMPIC BLVD



S BARRINGTON AVE



STONER AVE



ARMACOST AVE

BUNDY DR

EXPOSITION BLVD

PICO BLVD

11751
MISSISSIPPI



SAWTELLE

1

2

3

4

5

10

27th St

29th St

31st St

32nd St

33rd St

34th St

9

7

6

11

12

13

14

15

16

17

18

19

20

- 1. Tiato Kitchen & Market
- 2. Birdie G's
- 3. Bergamot Cafe
- 4. Lime Cafe
- 5. Lunetta All Day

- 6. Society Kitchen
- 7. The Counter
- 8. Vito
- 9. Blueys Market & Cafe
- 10. Starbucks

- 11. El Torito
- 12. Kiff Kafe
- 13. The Arsenal
- 14. Bed Bath & Beyond
- 15. Tacos Por Favor

- 16. Ralph's
- 17. Marshalls
- 18. Best Buy
- 19. Starbucks
- 20. Chipotle

FOR LEASE

NEARBY AMENITIES



LEE & ASSOCIATES LOS ANGELES WEST, INC.

Aleks Trifunovic, SIOR

President

310-899-2721

atrifunovic@leewestla.com

BRK DRE 01363109

James Wilson

Principal

310-899-2708

jwilson@leewestla.com

AGT DRE 00883324

Sofa Kristiansen

Associate

310-899-2718

skristiansen@leewestla.com

AGT DRE 02219316