

Tenant  
Signage

**2250**  
S BARRINGTON AVE



A DIVISION OF



www.leewestla.com | dre 01222000

**±8,743 SF - 18,572 SF**  
Flex Building For Lease

**PREMISES**

1st Floor: ± 9,829 SF  
2nd Floor: ± 8,743 SF  
**Total Building: ± 18,572 SF**

**RENT**

Call Agent

**OCCUPANCY**

Immediate

**TERM**

Negotiable

**FEATURES**

- Two Story Standalone Building
- 11' Ceilings
- Excellent Natural Light
- Prime Central Location with Immediate Access to 10 and 405 Freeways
- Premium Building Signage Available
- Ample Parking
- Elevator Served

**CONTACT**

**Aleks Trifunovic, SIOR**

310.899.2721

atrifunovic@leewestla.com

BKR DRE 01363109

**Adam Levine**

323.899.2703

alevine@leewestla.com

AGT DRE 02104830

**Mollie Dietsch**

323.767.2105

mdietsch@lee-associates.com

AGT DRE 00899320

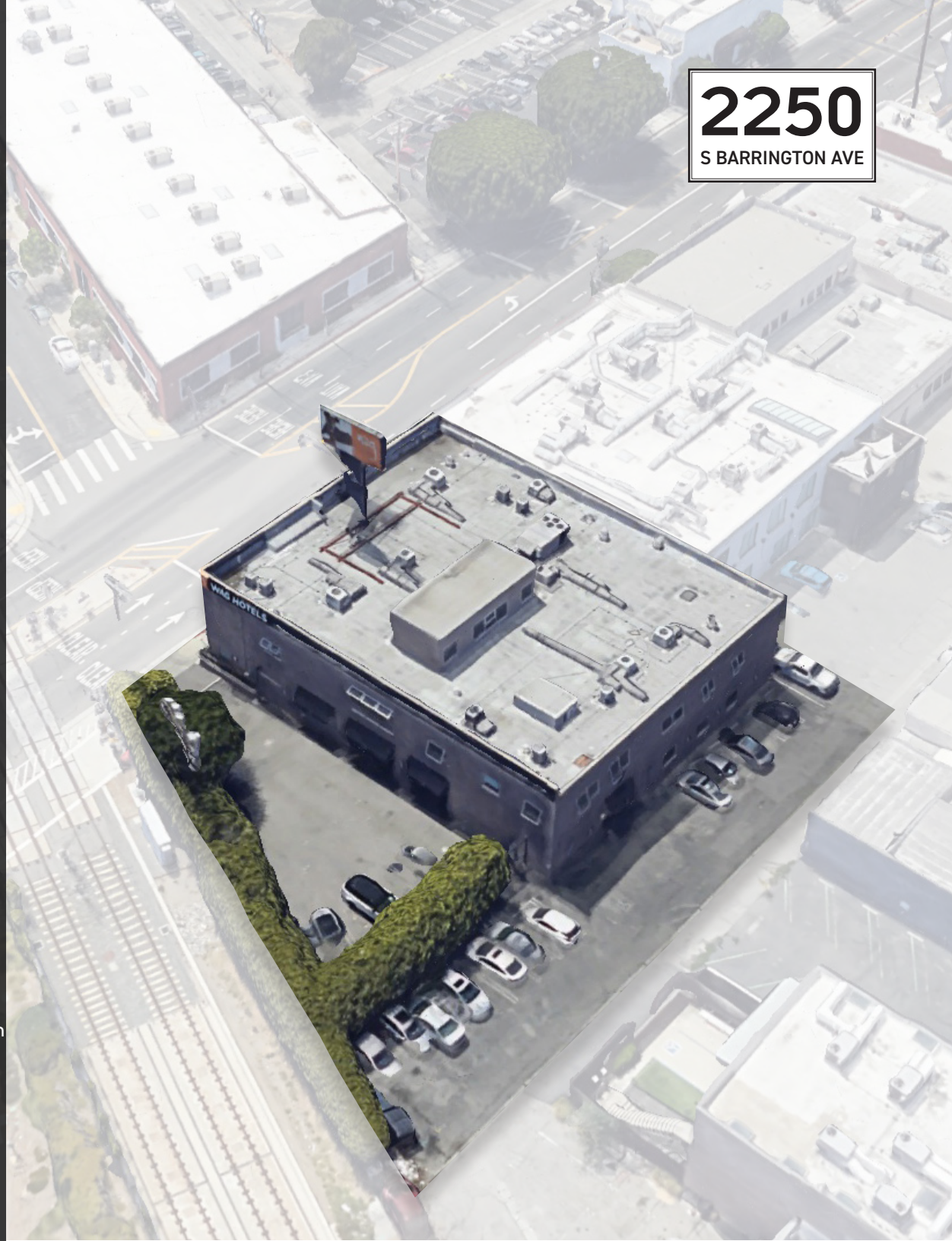
**Sofia Kristiansen**

323.899.2718

skristiansen@leewestla.com

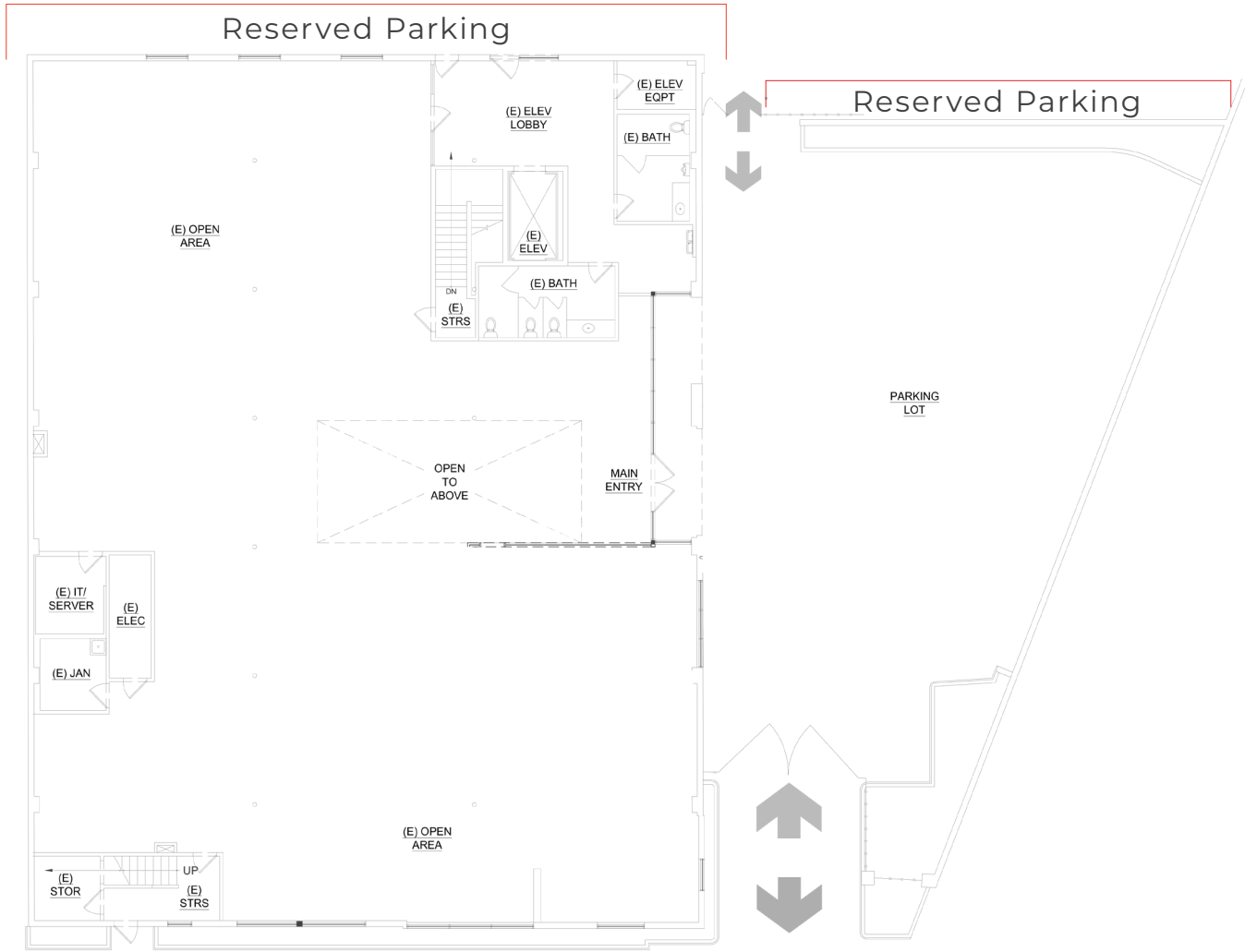
AGT DRE 02219316

**2250**  
S BARRINGTON AVE



# 1ST FLOOR - 9,829 SF

**2250**  
S BARRINGTON AVE



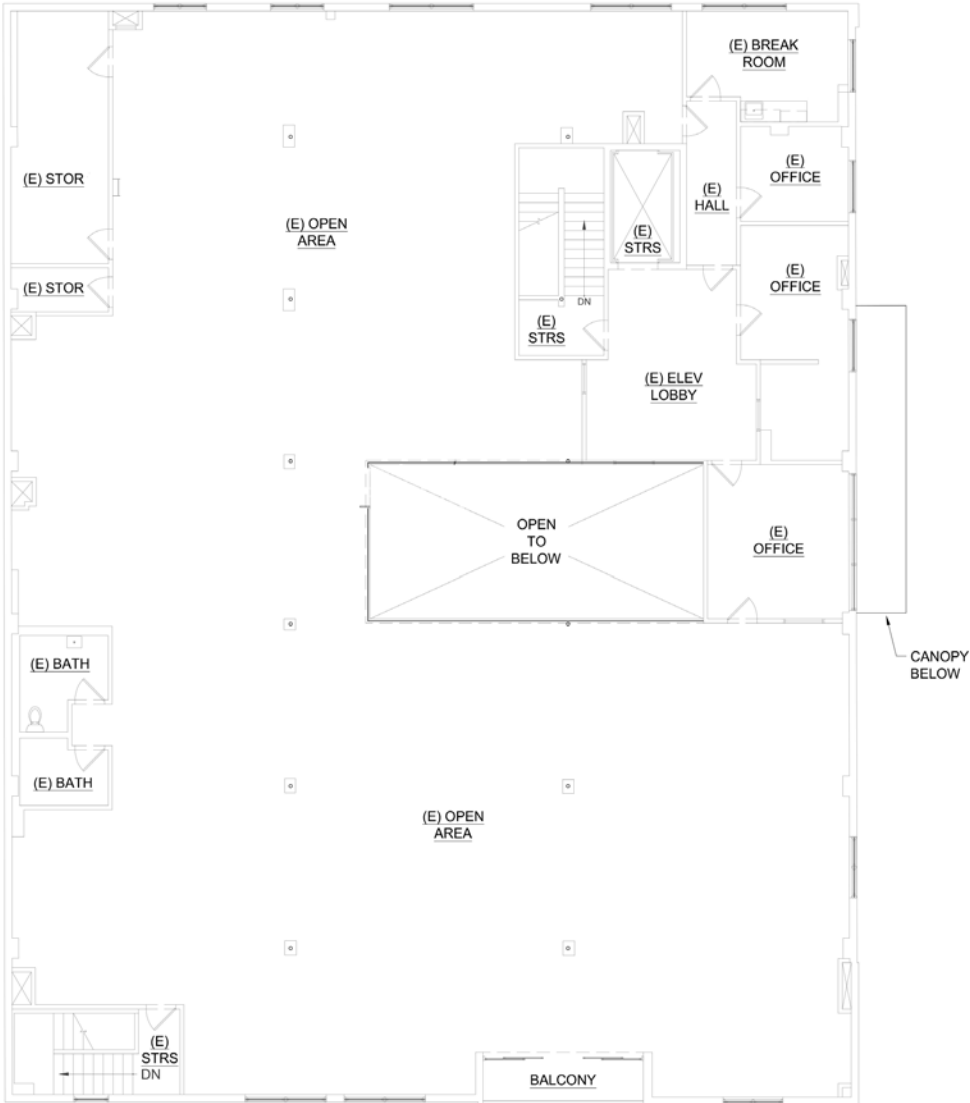
Barrington Ave



A DIVISION OF  
**LEE & ASSOCIATES**

# 2nd FLOOR - 8,743 SF

**2250**  
S BARRINGTON AVE



# INTERIOR OFFICE RENDERING

**2250**  
S BARRINGTON AVE



A DIVISION OF  
**LEE & ASSOCIATES**

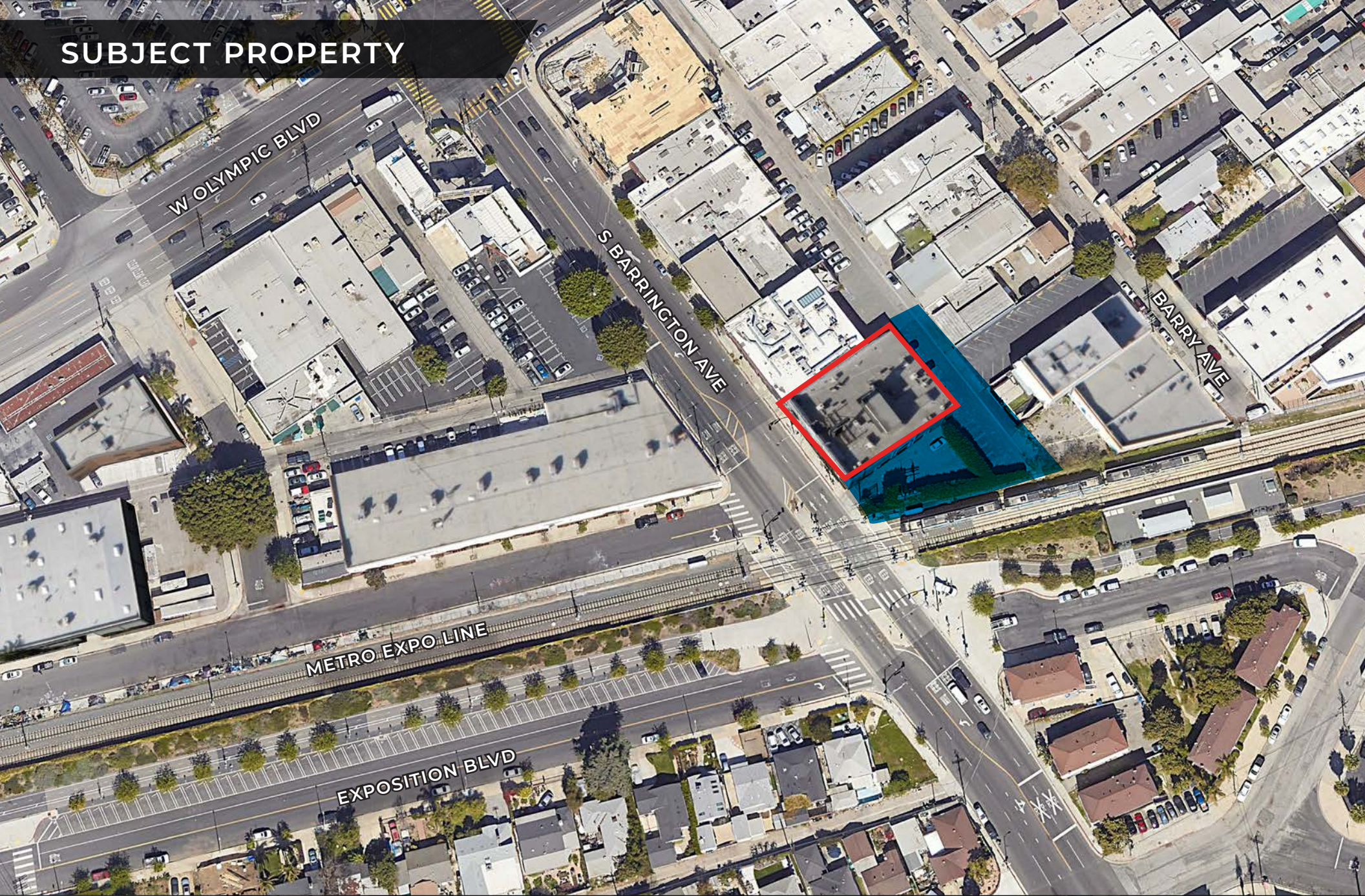
# EXTERIOR OFFICE RENDERING

**2250**  
S BARRINGTON AVE



A DIVISION OF  
**LEE & ASSOCIATES**

# SUBJECT PROPERTY



A DIVISION OF  
**LEE & ASSOCIATES**

**Aleks Trifunovic, SIOR**  
310.899.2721  
atrifunovic@leewestla.com  
BKR DRE 01363109

**Mollie Dietsch**  
323.767.2105  
mdietsch@lee-associates.com  
AGT DRE 00899320

**Adam Levine**  
323.899.2703  
alevine@leewestla.com  
AGT DRE 02104830

**Sofia Kristiansen**  
323.899.2718  
skristiansen@leewestla.com  
AGT DRE 02219316

# AREA OVERVIEW

## SANTA MONICA

SUBJECT PROPERTY



A DIVISION OF  
**LEE & ASSOCIATES**

**Aleks Trifunovic, SIOR**  
310.899.2721  
atrifunovic@leewestla.com  
BKR DRE 01363109

**Mollie Dietsch**  
323.767.2105  
mdietsch@lee-associates.com  
AGT DRE 00899320

**Adam Levine**  
323.899.2703  
alevine@leewestla.com  
AGT DRE 02104830

**Sofia Kristiansen**  
323.899.2718  
skristiansen@leewestla.com  
AGT DRE 02219316



Tenant  
Signage



**Aleks Trifunovic, SIOR**

310.899.2721

[atrifunovic@leewestla.com](mailto:atrifunovic@leewestla.com)

BKR DRE 01363109

**Mollie Dietsch**

323.767.2105

[mdietsch@lee-associates.com](mailto:mdietsch@lee-associates.com)

AGT DRE 00899320

**Adam Levine**

323.899.2703

[alevine@leewestla.com](mailto:alevine@leewestla.com)

AGT DRE 02104830

**Sofia Kristiansen**

323.899.2718

[skristiansen@leewestla.com](mailto:skristiansen@leewestla.com)

AGT DRE 02219316



Lee & Associates Los Angeles West, Inc.

1508 17th Street, Santa Monica, CA

310.899.2700 | [www.leewestla.com](http://www.leewestla.com) | DRE 01222000