

9925-9927
JEFFERSON BLVD

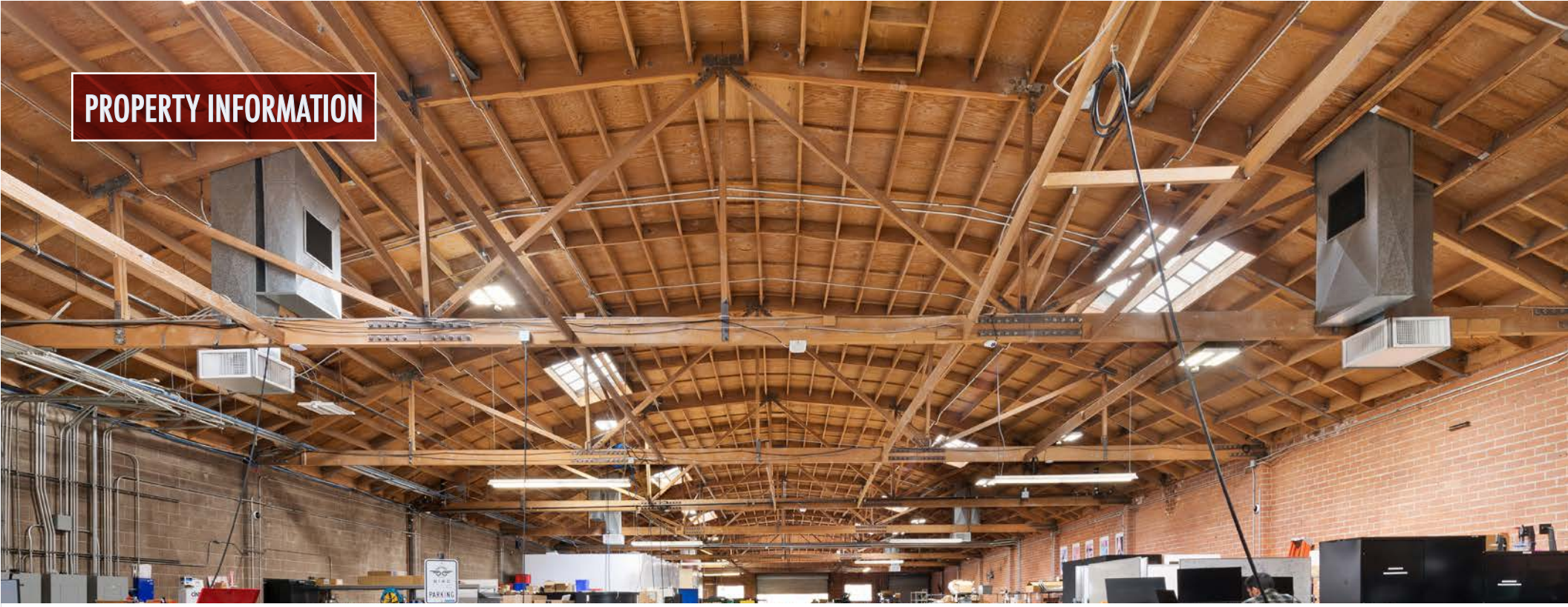


A DIVISION OF
**LEE &
ASSOCIATES**

www.leewestla.com | dre 01222000

FOR LEASE - CREATIVE/FLEX BUILDING IN CULVER CITY
DIVISIBLE FROM 15,903 SF TO 41,925 SF

PROPERTY INFORMATION



PREMISES 15,903 - 41,925 SF
RENT Flexible - Call Agent
OCCUPANCY Immediate
TERM Negotiable
(Short Term is Available)
PARKING 80 Parking Space, Single-Striped

FEATURES

- Ceiling Heights from 13'3" up to 24'
- Excellent Power
- Private Compound
- Perfect blend of office and flex space
- Wide variety of uses
- CC-IG Zone



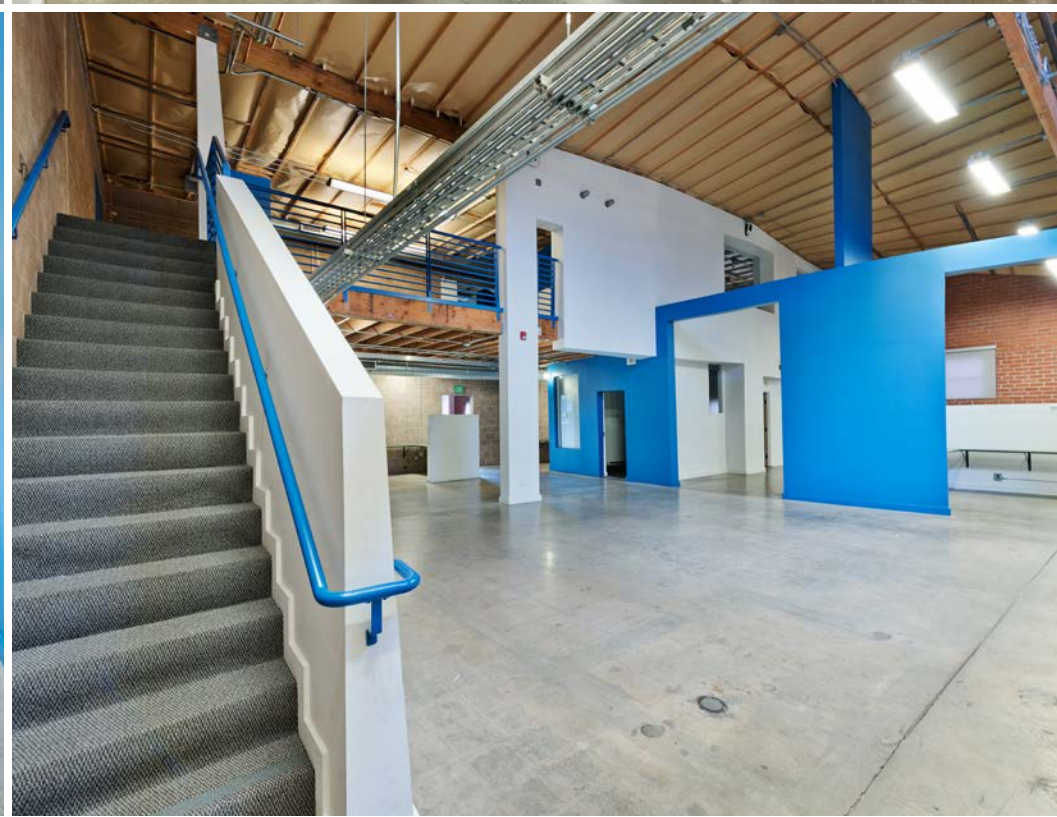
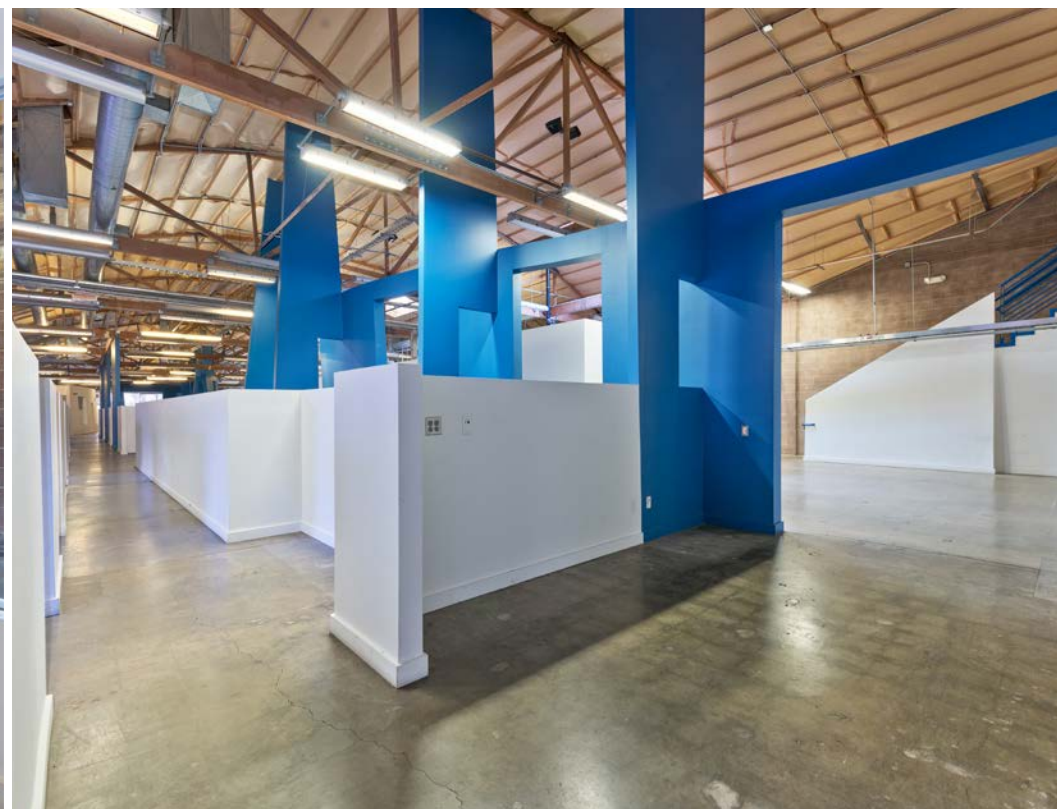
A DIVISION OF
LEE & ASSOCIATES

No warranty or representation is made to the accuracy of the foregoing information. Terms of sale or lease are subject to change or withdrawal without notice.

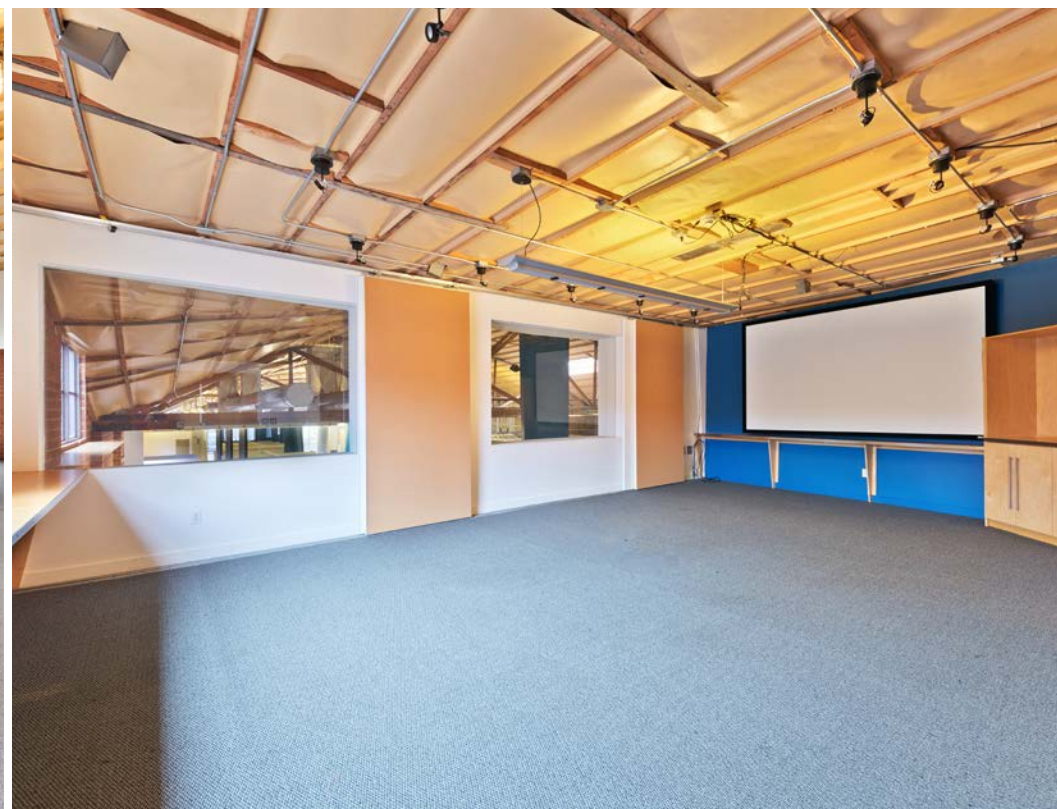
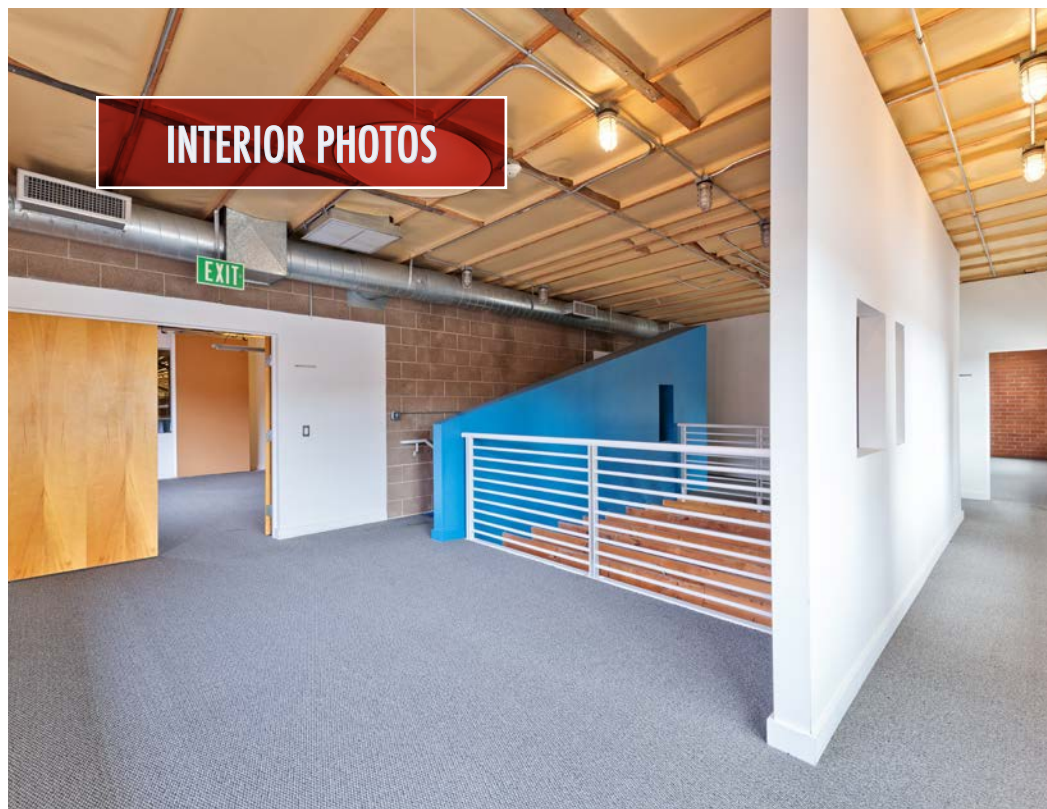
EXTERIOR PHOTOS



INTERIOR PHOTOS



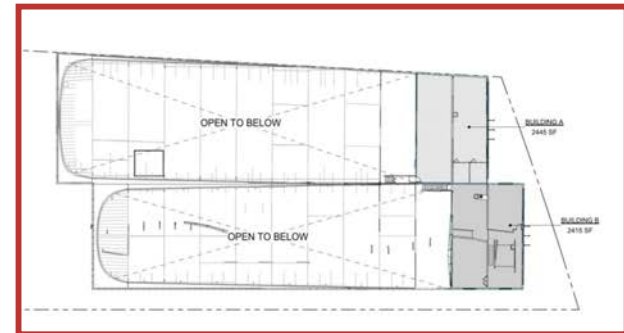
INTERIOR PHOTOS



L/WLA

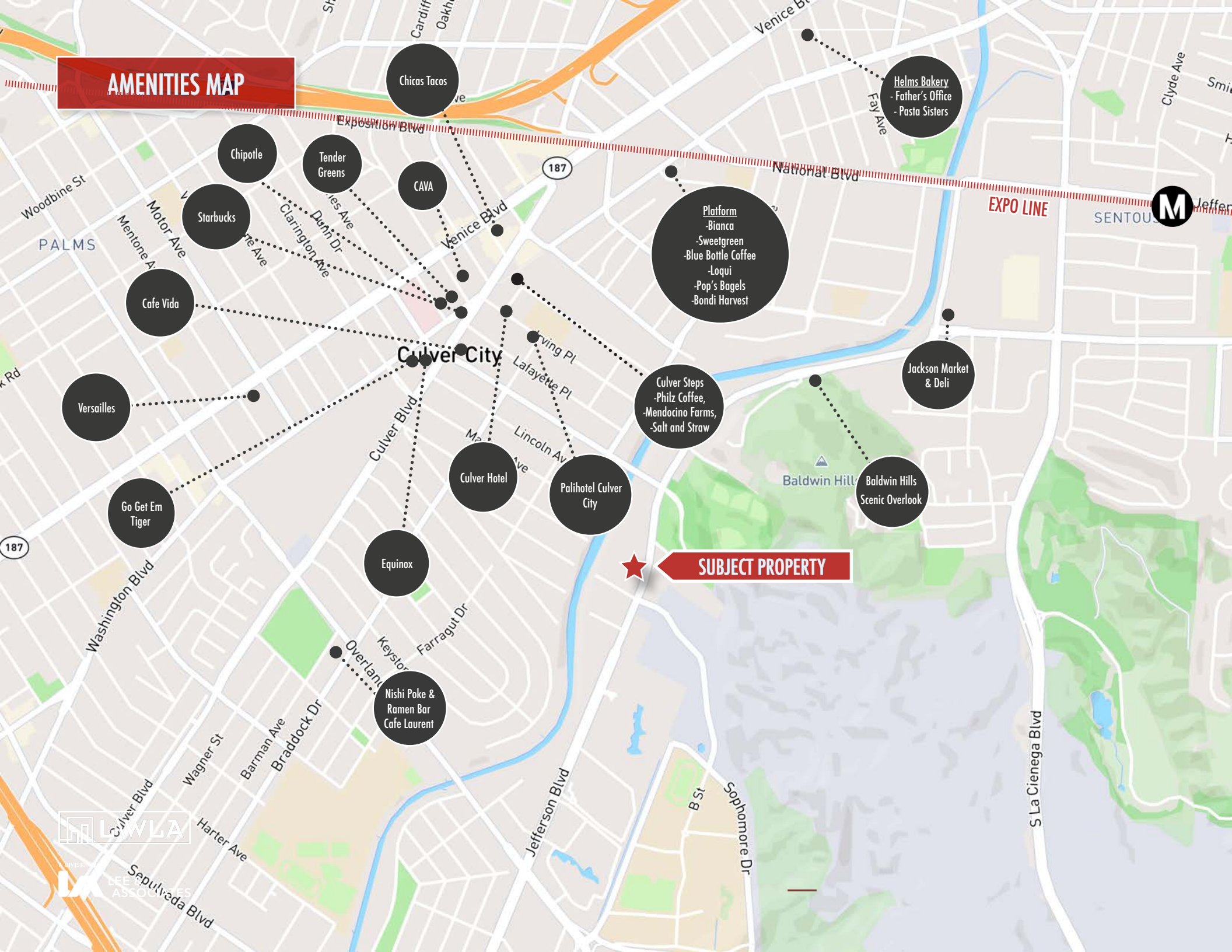
A DIVISION OF
LEE & ASSOCIATES

FLOOR PLAN/SITE PLAN



A DIVISION OF
LEE & ASSOCIATES

AMENITIES MAP



AERIAL

SONY STUDIOS

NPR



AERIAL

DOWNTOWN CULVER

AMAZON STUDIOS

HAYDEN TRACT

SONY STUDIOS





Aleks Trifunovic, SIOR
President
310.899.2721
atrifunovic@leewestla.com
BKR DRE 01363109

Keith Fielding
Principal
310.899.2719
kfielding@leewestla.com
AGT DRE 01729915

Tommy Isola
Principal
310.899.2709
tisola@leewestla.com
AGT DRE 01974024

Tibor Lody, SIOR
Principal
310.899.2720
tlody@leewestla.com
AGT DRE 01261129

Adam Levine
Associate
310.899.2703
alevine@leewestla.com
AGT DRE 02104830

Lee & Associates Los Angeles West, Inc.
1508 17th Street, Santa Monica, CA
310.899.2700 | www.leewestla.com | DRE 01222000