

# 1740 STANFORD STREET

SANTA MONICA, CA 90404



FOR LEASE



A DIVISION OF



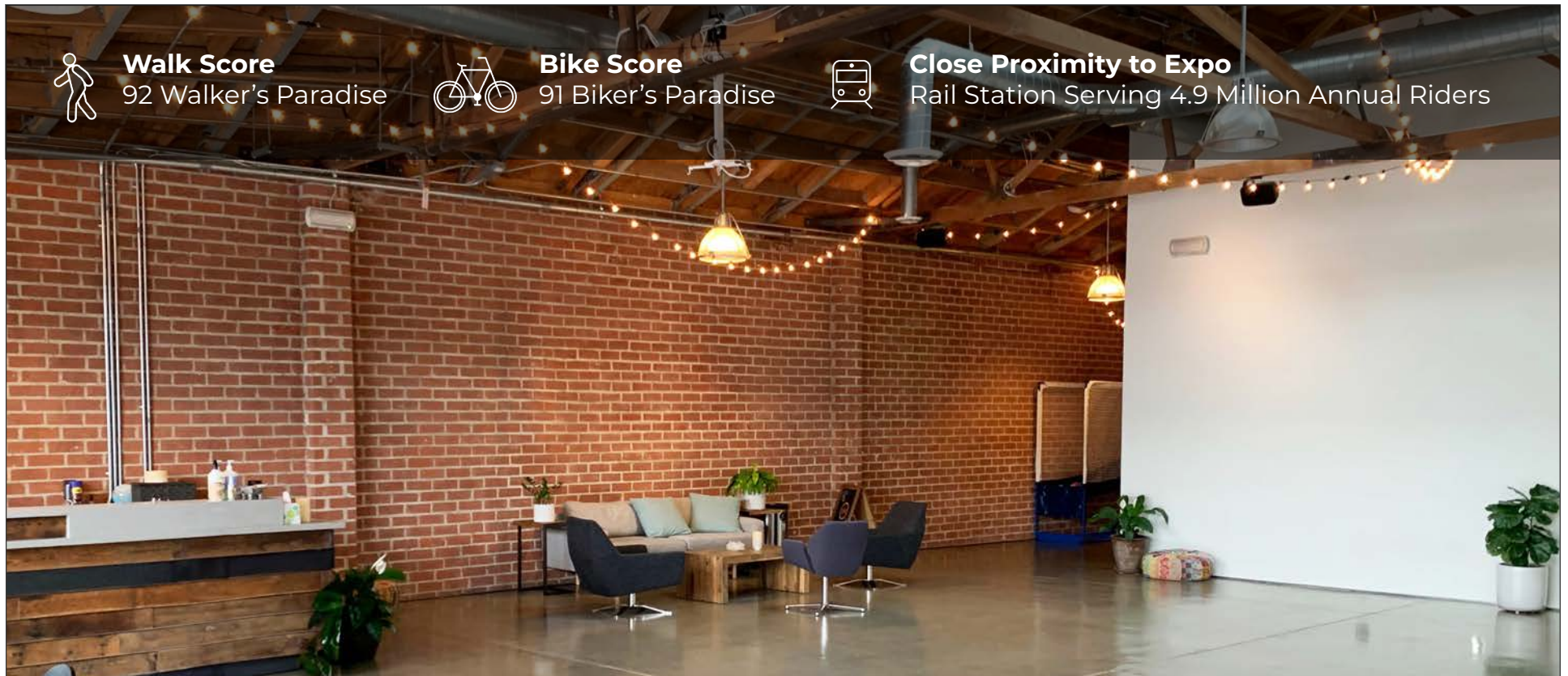
± 9,000 SF  
ULTRA HIGH-END CREATIVE SPACE

# OPPORTUNITY OVERVIEW

Lee West LA is pleased to present the opportunity to lease 1740 Stanford Street, located in the heart of Santa Monica, surrounded by creatives and technologists alike. 1740 Stanford underwent a full shell and core renovation in from 2016-2018, and features state of the art building systems equipped with ultra high end finishes.

With easy access to public transportation and major highways, commuting to and from the office is a breeze. This location is perfect for creative professionals looking for a vibrant and dynamic workspace that inspires creativity and productivity.

The building boasts an industrial chic design, complete with beautifully restored wooden trusses, high ceilings, exposed brick walls, and large operable windows that provide ample natural light and airflow. The mix of open layout and private offices, in addition to studio space, provides flexible options for creating the perfect workspace that meets your companies unique needs.





# FEATURES

- High Height Bow Truss Ceilings
- Polished Concrete Floors
- High End Kitchen with Sub Zero Refrigerator
- Torrance Steel Operable Windows Throughout
- HVAC Throughout The Space
- Floor to Ceiling Glass Roll Up Doors
- High End Restrooms with Showers In Place
- Easy Access to the 10 FWY, PCH & 405 FWY
- Keyless Entry Throughout
- Gated Secure Parking On-Site



No warranty or representation is made to the accuracy of the foregoing information. Terms of sale or lease are subject to change or withdrawal without notice.

## PREMISES

± 9,000 SF

## RENT

\$4.95/SF, NNN  
(\$0.80 - \$0.90 Nets)

## TERM

5 - 7 Years

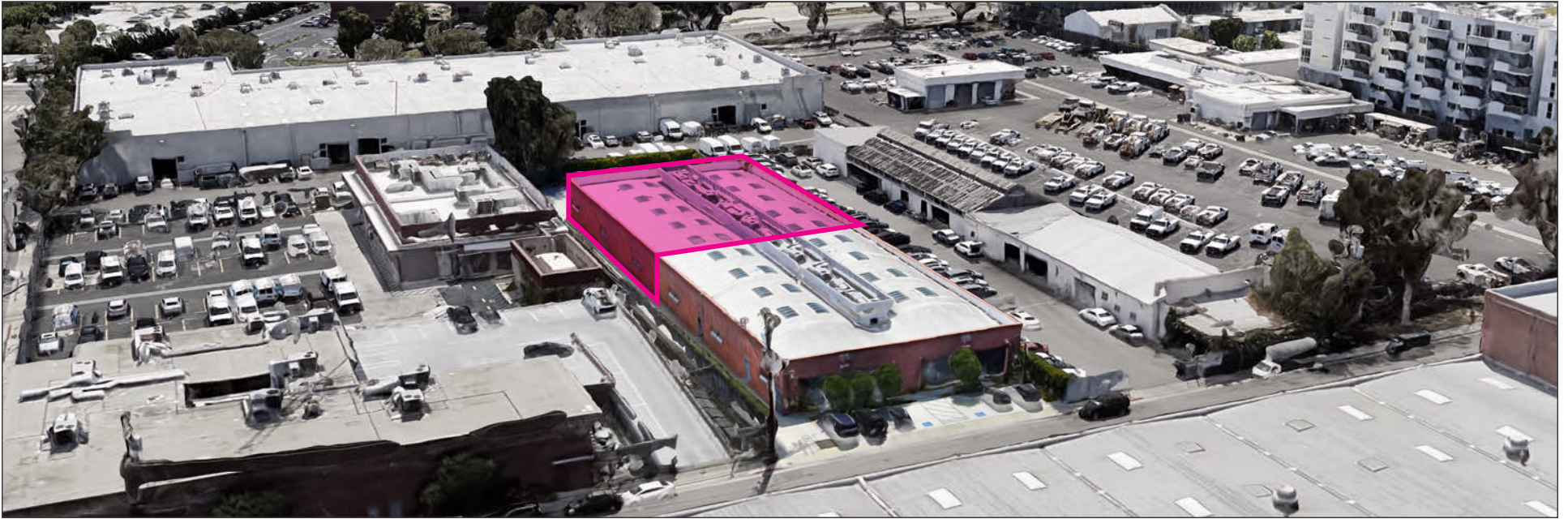
## OCCUPANCY

Summer 2024

## PARKING

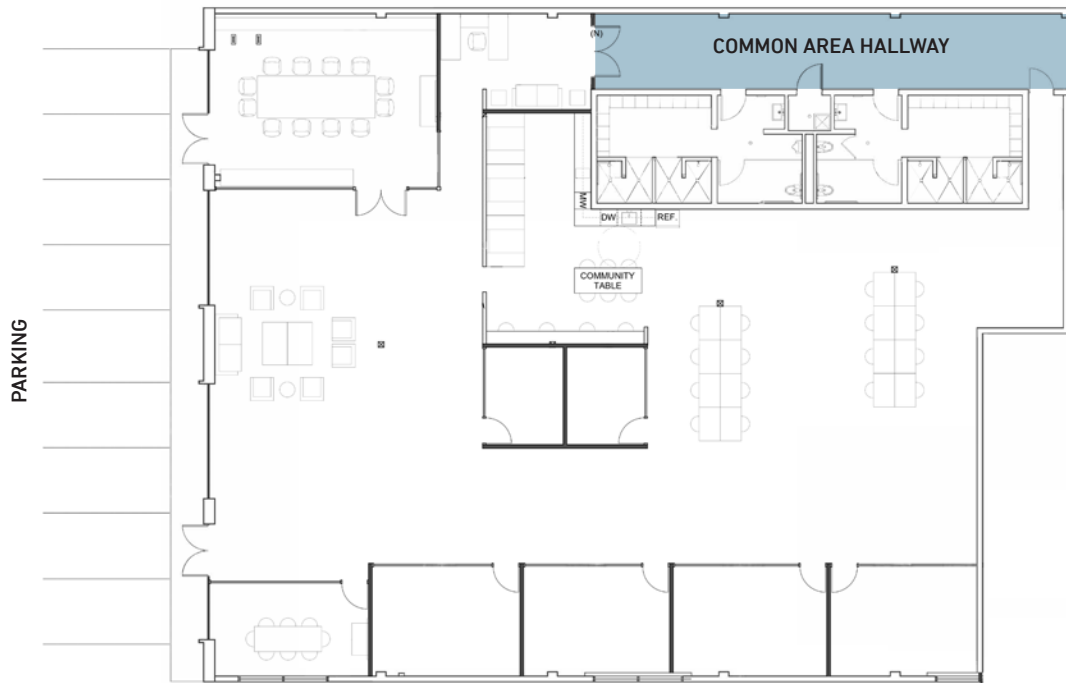
12 - 15 Spaces On-Site  
(\$200/Space/Month)  
Additional Parking  
Available Off-site

# SITE AERIAL

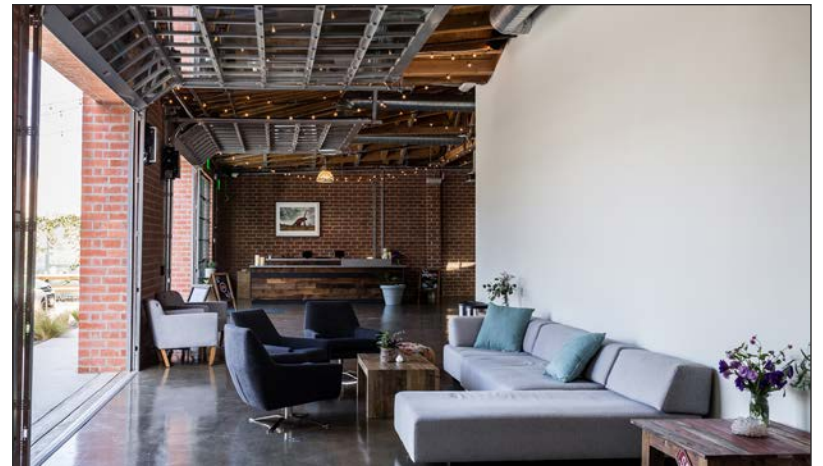


# FLOOR PLAN

## SUITE B



HYPOTHETICAL TEST FIT



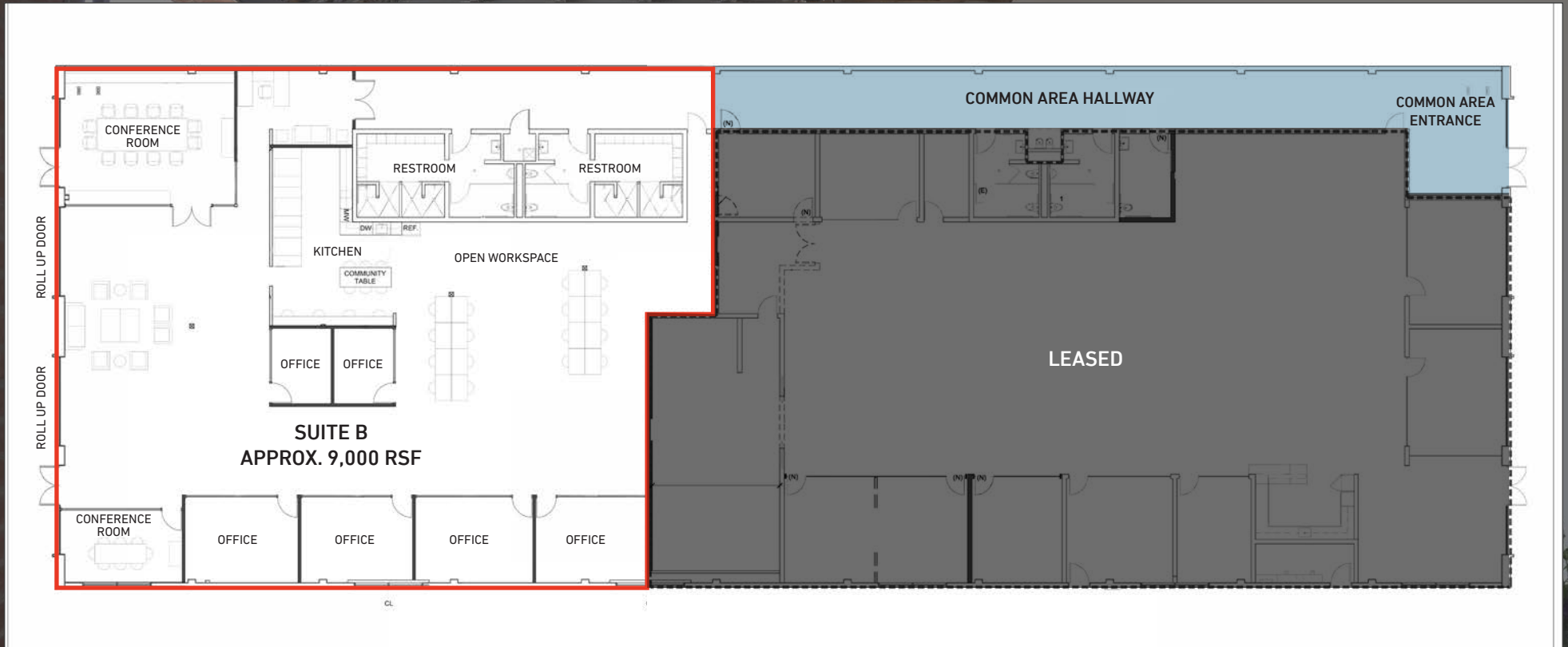


**FOR LEASE**



**REPRESENTATIVE OF INTERIOR  
OFFICE BUILDOUT AND FINISHES**

# PROJECT OVERVIEW





# NEARBY MAJOR TENANTS

## WEST OLYMPIC CORRIDOR

Bad Robot  
Indian Paintbrush  
Final Cut  
JBC Music  
Arsenal FX Color  
Digital Nation Entertainment  
Cutters  
Parks Mac Donald  
Planet Blue HQ  
Radical Media  
Threshold Entertainment

## BROADWAY PLACE

General Editorial  
TigerConnect  
Cut + Run  
Cosmo Street Editorial  
Apache

MAD Architects  
Rock Paper Scissors  
Cross Creek Entertainment

## COLORADO CENTER

HULU  
HBO  
Bird  
ShoeDazzle

## PENN FACTORY/PENN STATION

GoodRX  
Kite Pharma  
Redbull North America HQ  
Tala  
Center for Media & Design

## 1740 STANFORD ST.

## COLORADO CORRIDOR

Viacom  
Lionsgate  
Interscope Records  
Illumination  
Gameshow Network  
Universal Music Group  
Starz Entertainment  
Simple Practice  
Goop  
The Honest Company  
FIGS  
Reddit

## WATER GARDEN

Amazon Studios  
CBS  
AMC Networks  
Oracle

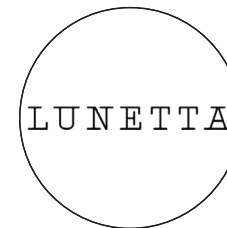
## BERGAMOT STATION

FIG Gallery  
Ikon Limited Fine Art  
Montalba Architects  
Sulkin Studio Architecture

## BERKELEY SM EAST

Blackbear Pictures  
Blue Bonsai  
Jenni Kayne  
Soundbox  
Apogee Electronics  
Cartel  
Yoga Glo

# AREA AMENITIES



# CONTACTS

**GEORGE WILSON**

310.899.2738  
gwilson@leewestla.com  
AGT DRE 02090678

**DAVID WILSON**

310.899.2707  
dwilson@leewestla.com  
AGT DRE 00822760

**BRAD MCCOY**

310.899.2730  
bmccoy@leewestla.com  
BKR DRE 01938098

Lee & Associates Los Angeles West, Inc.  
1508 17th Street, Santa Monica, CA 90404  
www.leewestla.com | DRE 01222000



A DIVISION OF



LEE &  
ASSOCIATES