

RATE REDUCED!



**3431 WESLEY STREET
CULVER CITY, CA 90230**

PREMISES Unit D ± 1,325 SF

RENT \$2.50/SF NNN for first 12 months
(Nets Approx. \$0.48/SF)
\$3.25/SF NNN thereafter

OCCUPANCY Immediate

TERM Negotiable

PARKING 3 Spaces (\$150/Space/month)

FEATURES

- High Ceilings
- Open Environment
- Natural Light
- Concrete Floor
- Mezzanine Lounge
- Operative Windows
- Wesley Street Frontage



1508 17th Street, Santa Monica, CA 90404
310.899.2700 | www.leewestla.com | DRE 01222000

No warranty or representation is made to the accuracy of the foregoing information.
Terms of sale or lease are subject to change or withdrawal without notice.



**3431 WESLEY STREET
CULVER CITY, CA 90230**

UNIT D



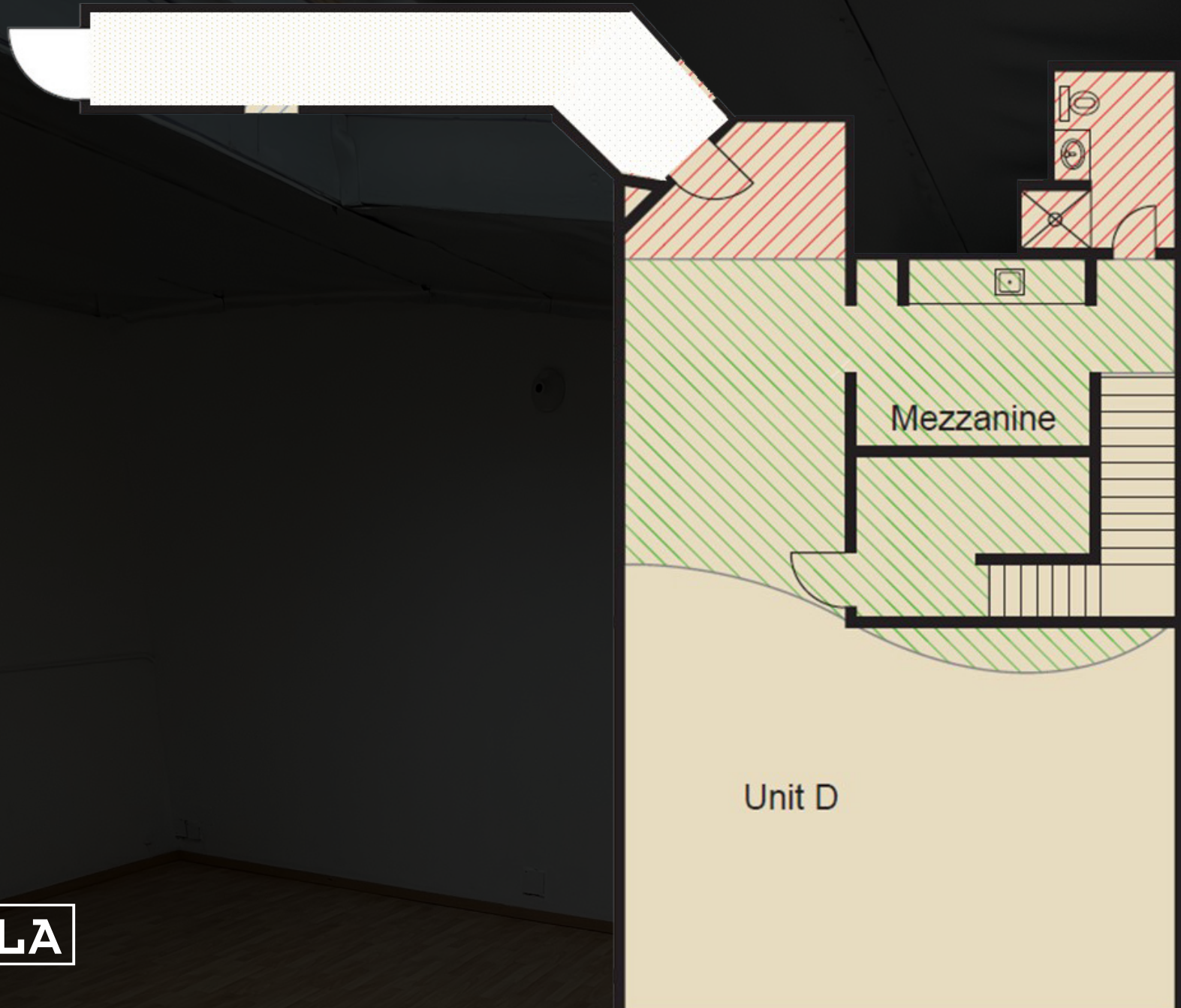
A DIVISION OF
L LEE &
ASSOCIATES

UNIT D



FLOOR PLAN

Unit D



SITE PLAN



A DIVISION OF
LEE & ASSOCIATES



A DIVISION OF
LEE & ASSOCIATES



Gage Danley

310.899.2749

GDanley@LeeWestLA.com

AGT DRE 02075191



Alex Rivera

310.899.2742

ARivera@LeeWestLA.com

BKR DRE 010328712



A DIVISION OF
**LEE &
ASSOCIATES**