

eleven

1231  
LINCOLN BLVD

1231



A DIVISION OF  
**LEE &  
ASSOCIATES**

www.leewestla.com | dre 01222000

Santa Monica Creative Office/Audio Post Facility



1231  
LINCOLN BLVD



**PREMISES**

7,250 SF Building  
7,500 SF Land

**RENT**

Call Broker

**OCCUPANCY**

Immediate

**TERM**

3 - 10 Years

**PARKING**

7 - 8 Spaces ( Abundant parking in the area)

**FEATURES**

- Private Standalone Building
- 4 State of the Art Sound Recording Studios
- Private Outdoor Patio Space
- Full Kitchen and Wet-Bar
- Walkable to Amenities, Restaurants and Cafes



1231  
LINCOLN BLVD



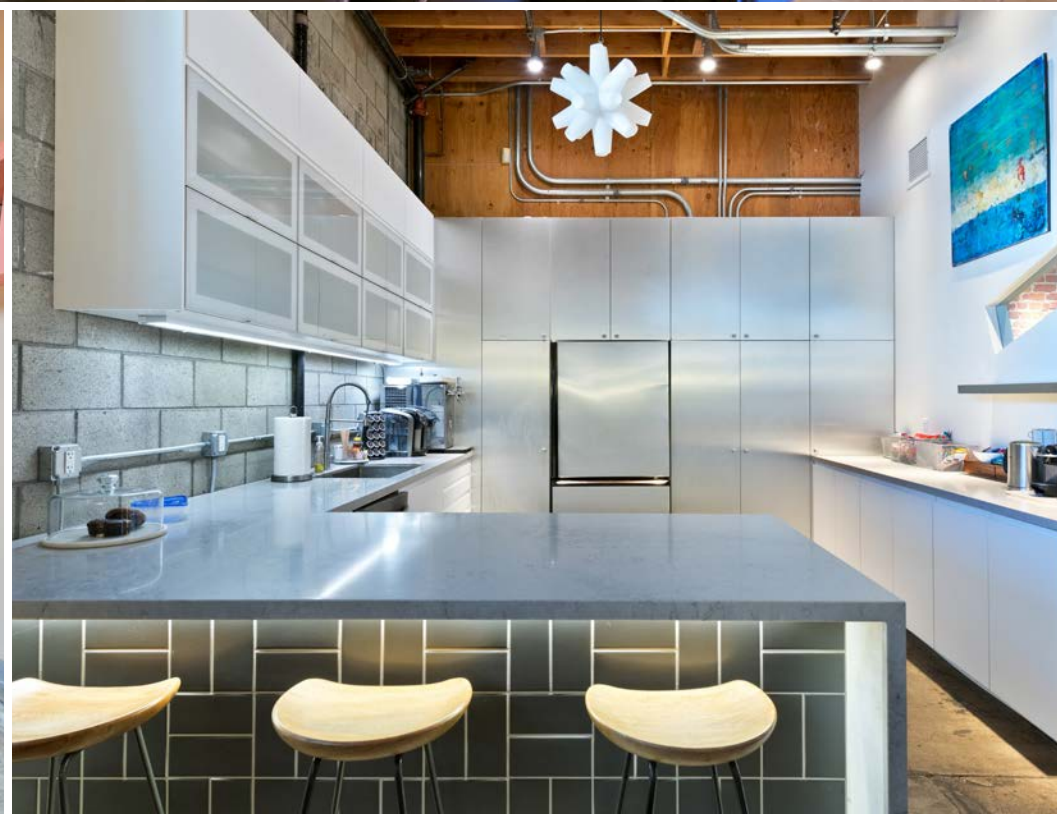
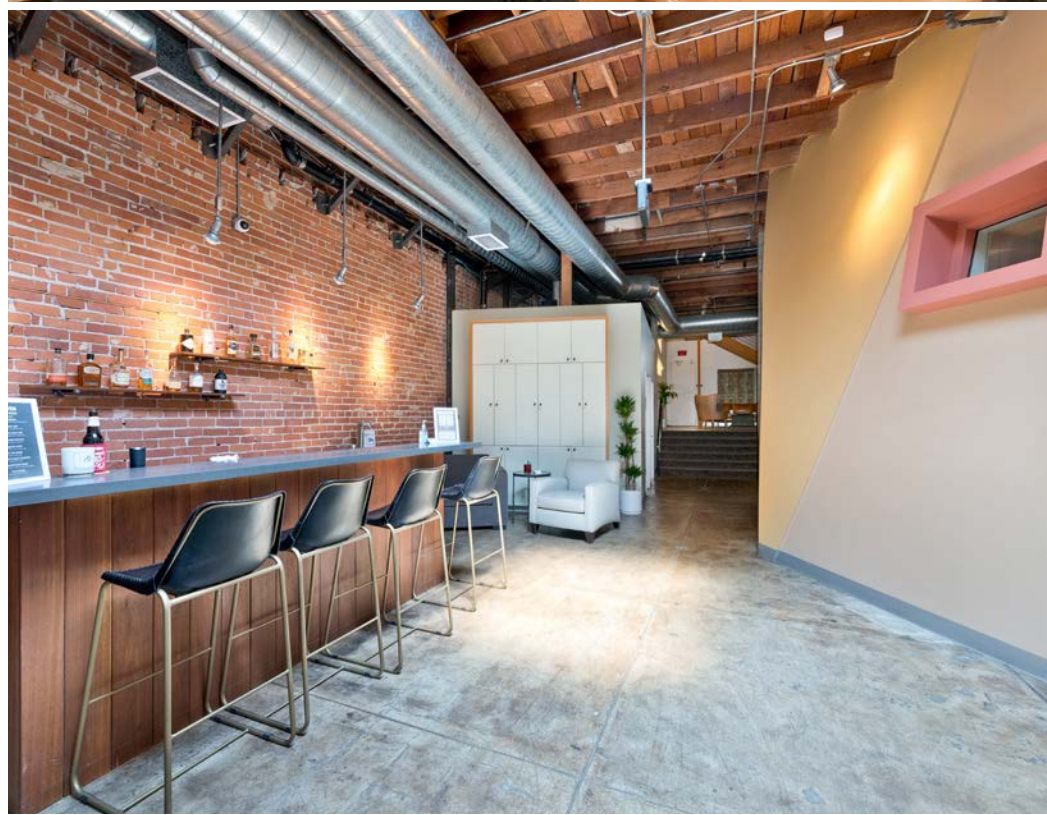


1231  
LINCOLN BLVD





1231  
LINCOLN BLVD





1231  
LINCOLN BLVD

# 1ST FLOOR PLAN

Tibor Lody, SIOR  
310.899.2720  
tlody@leewestla.com  
AGT DRE 01261129

Aleks Trifunovic, SIOR  
310.899.2721  
atrifunovic@leewestla.com  
BKR DRE 01363109

Keith Fielding  
310.899.2719  
kfielding@leewestla.com  
AGT DRE 01729915

Tommy Isola  
310.899.2709  
tisola@leewestla.com  
AGT DRE 01974024

Adam Levine  
Associate  
310.899.2703  
alevine@leewestla.com  
AGT DRE 02104830



A DIVISION OF  
**LEE & ASSOCIATES**



**1231**  
LINCOLN BLVD

# 2ND FLOOR PLAN

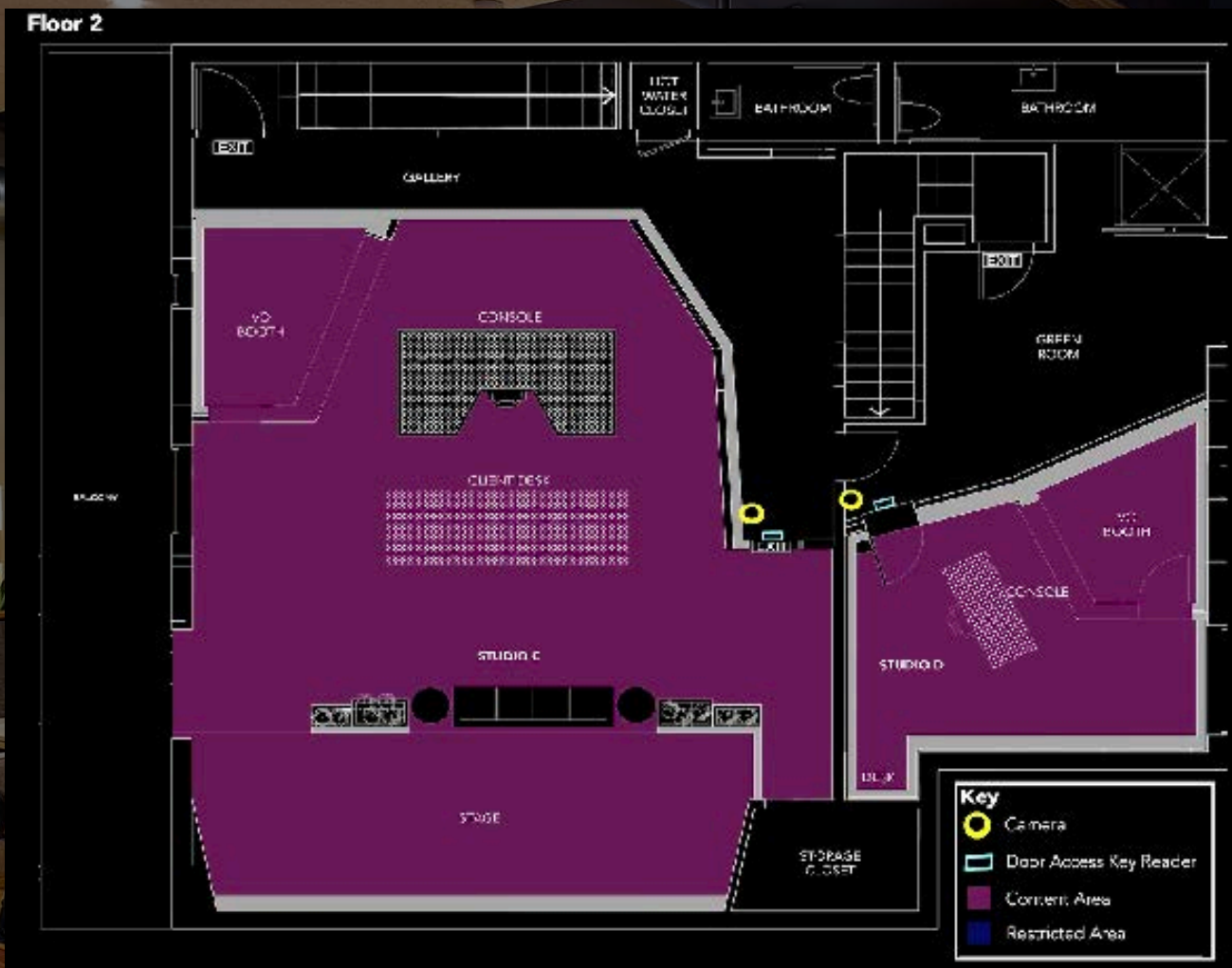
Tibor Lody, SIOR  
310.899.2720  
tlody@leewestla.com  
AGT DRE 01261129

Aleks Trifunovic, SIOR  
310.899.2721  
atrifunovic@leewestla.com  
BKR DRE 01363109

Keith Fielding  
310.899.2719  
kfielding@leewestla.com  
AGT DRE 01729915

Tommy Isola  
310.899.2709  
tisola@leewestla.com  
AGT DRE 01974024

Adam Levine  
Associate  
310.899.2703  
alevine@leewestla.com  
AGT DRE 02104830



# AMENITIES MAP

**1231**  
LINCOLN BLVD





1231  
LINCOLN BLVD

WILSHIRE BLVD

LINCOLN BLVD

ARIZONA AVE



subject property





**1231**  
LINCOLN BLVD



**Tibor Lody, SIOR**  
Principal  
310.899.2720  
tlody@leewestla.com  
AGT DRE 01261129

**Aleks Trifunovic, SIOR**  
President  
310.899.2721  
atrifunovic@leewestla.com  
BKR DRE 01363109

**Keith Fielding**  
Principal  
310.899.2719  
kfielding@leewestla.com  
AGT DRE 01729915

**Tommy Isola**  
Principal  
310.899.2709  
tisola@leewestla.com  
AGT DRE 01974024

**Adam Levine**  
Associate  
310.899.2703  
alevine@leewestla.com  
AGT DRE 02104830

Lee & Associates Los Angeles West, Inc.  
1508 17th Street, Santa Monica, CA  
310.899.2700 | www.leewestla.com | DRE 01222000