

# CREATIVE OFFICE SPACES FOR LEASE IN FRANK GEHRY DESIGNED BUILDING



**1520 - 1528 CLOVERFIELD BOULEVARD  
SANTA MONICA, CA 90404**



## 1520-1528 Cloverfield Blvd, Santa Monica

Designed by world renowned architect Frank Gehry, 1520 Cloverfield Blvd is a multi-tenant creative building located in the heart of Santa Monica's Media District. Formerly home to a wig company, Gehry moved into the building in the early 1960's with a revolutionary idea to creatively combine the existing traditional brick structure with new stainless steel fascia that envelopes the building's exterior. The end product, which still stands out today as one of the most successful adaptive-reuse projects in Los Angeles, is occupied by production, tech and media groups who are drawn to the loft-like creative office, rarely found in the area.

PREMISES

Suite 1522 - A : 2,950 SF  
Suite 1524 - B : 2,000 SF  
Suite 1524 - C : 2,000 SF  
Suite 1524 - G : 2,700 SF

RENT

\$3.85/SF MG

TERM

Negotiable

PARKING

1/1,000 available for free on-site (more parking available across the street at Colorado Center)

FEATURES

- Building Designed by World Renowned Architect Frank Gehry Who Headquartered in the Building for Over 30 Years
- Located in the Heart of the Santa Monica Media District
- Easy Access to Olympic Boulevard, Metro Stops, 10 Fwy, PCH
- 10' - 20' Ceiling Height
- Private Offices
- Individual Controllable HVAC Units Specific to Each Suite
- Ideal for Film & Media Companies
- High Quality Tenant Roster in Surrounding Area

CONTACT

Aleks Trifunovic, SIOR  
310.899.2721  
atrifunovic@leewestla.com  
BKR DRE 01363109

Tibor Lody, SIOR  
310.899.2720  
tlody@leewestla.com  
AGT DRE 01261129

Tommy Isola  
310.899.2709  
tisola@leewestla.com  
AGT DRE 01974024

Adam Levine  
310.899.2703  
alevine@leewestla.com  
AGT DRE 02104830



**1520 – 1528 CLOVERFIELD BLVD.  
SANTA MONICA, CA 90404**



# LOCATION OVERVIEW

INTERSTATE  
10

EXPO LINE

PLATFORM

CLOVERFIELD STREET

20TH STREET

OLYMPIC BLVD

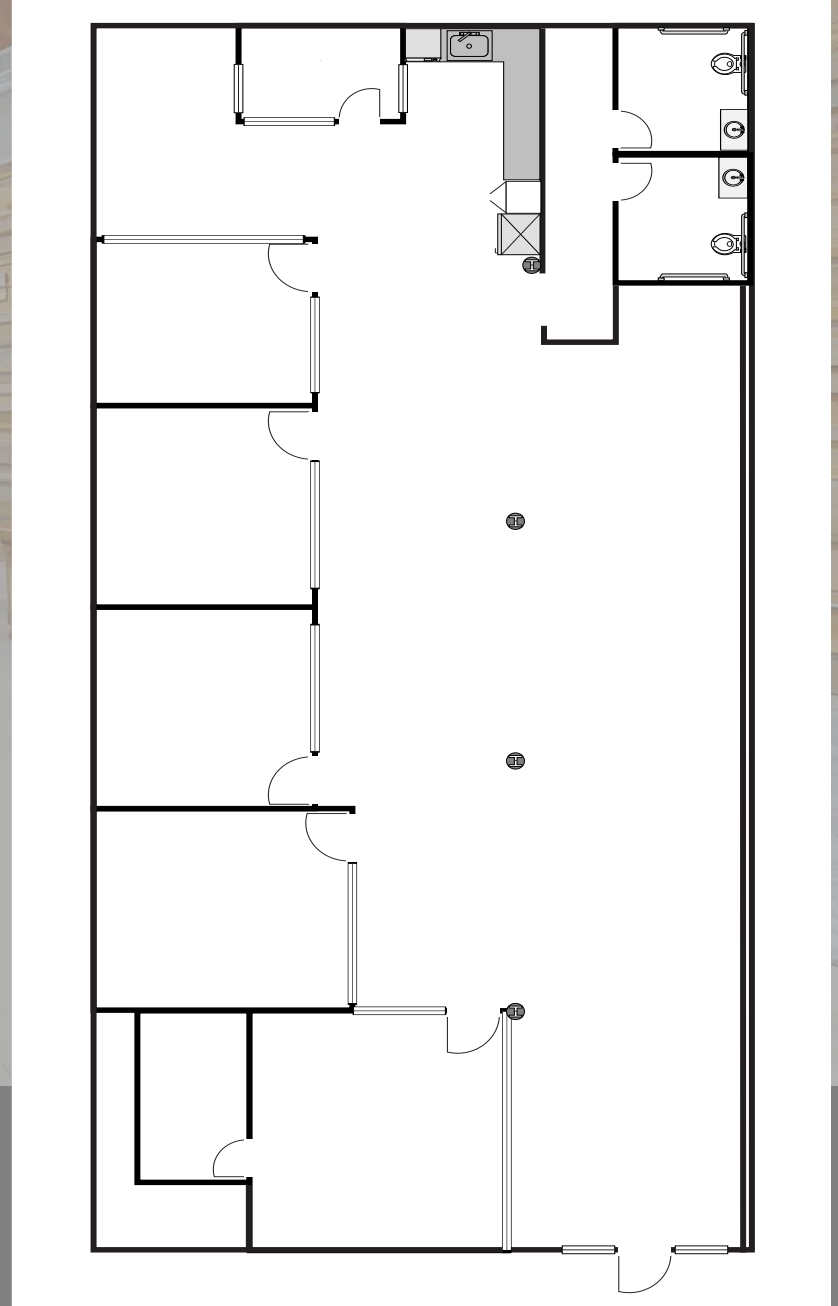
COLORADO AVE

SUBJECT PROPERTY

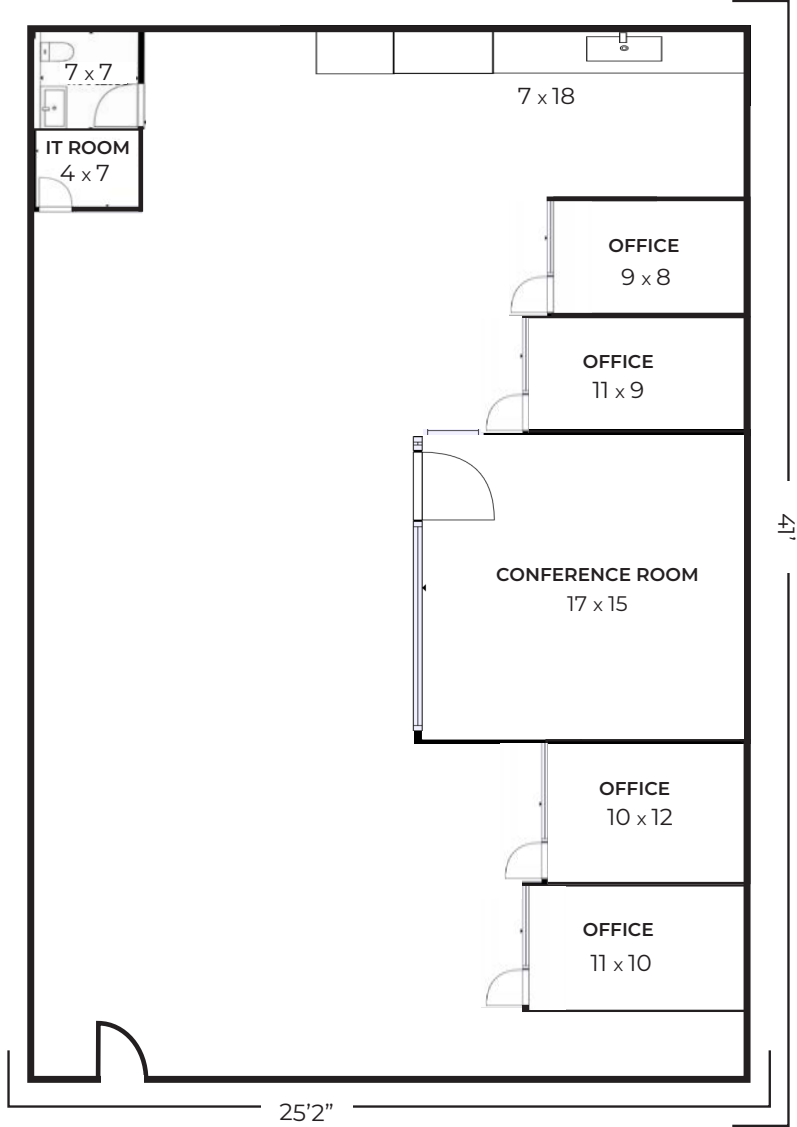
BROADWAY



Suite 1522 - A : 2,950 SF

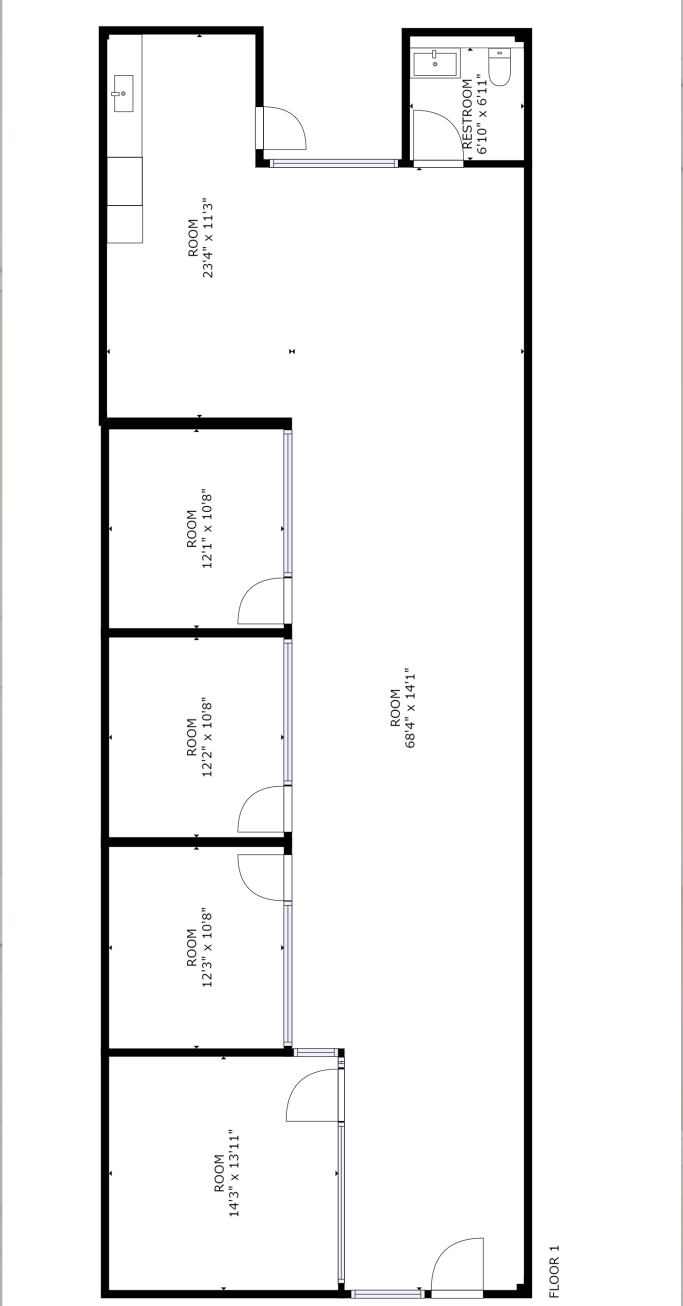
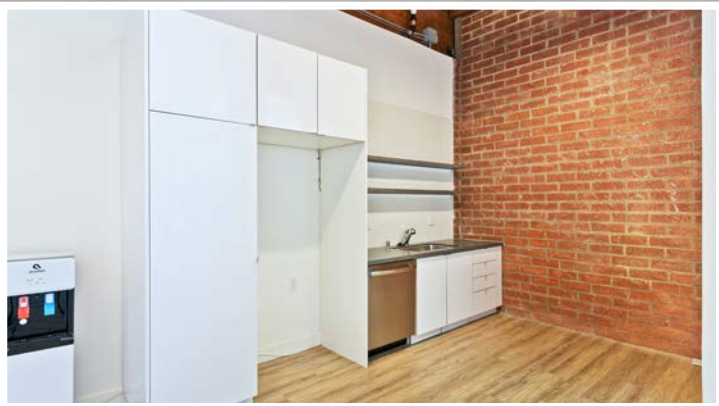


Suite 1524 - B : 2,000 SF

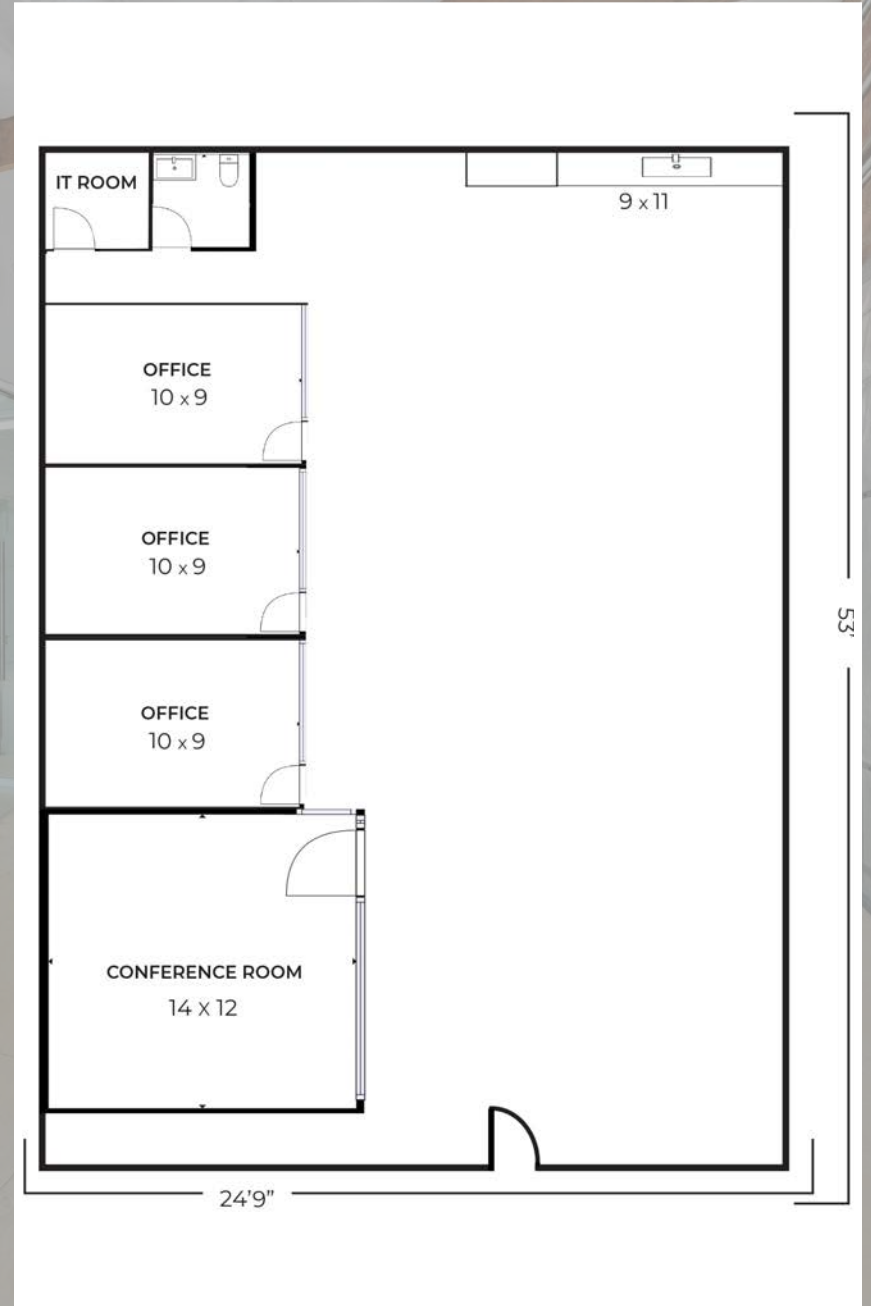
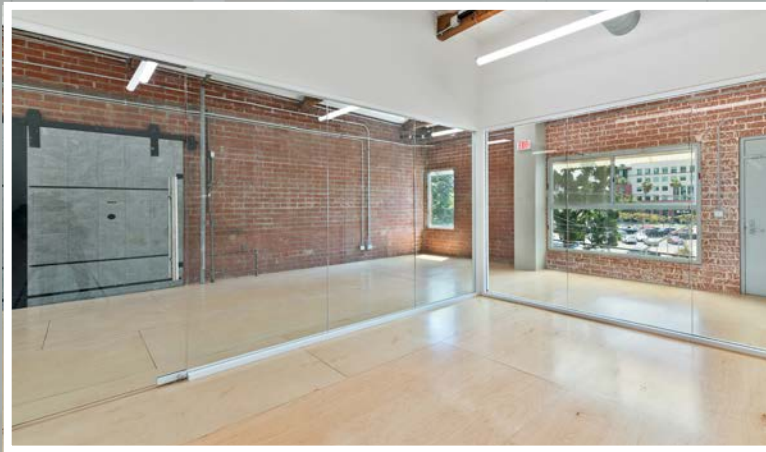


\*Not to Scale

# Suite 1524 - C : 2,000 SF



Suite 1524 - G : 2,700 SF





# AMENITIES MAP



CHAUMONT BAKERY

CAFE RUISSEAU

TIATO

LIME CAFE

BERGAMOT CAFE

RALPH'S

RENOVO

SUBJECT PROPERTY

STARBUCKS

SALT & TART

GOODBOYBOB COFFEE

HUMMUS XPRESS

UPPERS CAFE

BREW WORKS

# NEARBY MAJOR TENANTS

## BROADWAY PLACE

General Editorial  
TigerConnect  
Cut + Run  
Cosmo Street Editorial  
Apache

MAD Architects  
Rock Paper Scissors  
Cross Creek Entertainment

## COLORADO CENTER

HULU  
HBO  
Bird  
ShoeDazzle

## PENN FACTORY/PENN STATION

GoodRX  
Kite Pharma  
Redbull North America HQ  
Tala  
Center for Media & Design

## 1520-1528 CLOVERFIELD

## COLORADO CORRIDOR

Viacom  
Lionsgate  
Interscope Records  
Illumination  
Gameshow Network  
Universal Music Group  
Starz Entertainment  
Simple Practice  
Goop  
The Honest Company  
FIGS  
Reddit

## WATER GARDEN

Amazon Studios  
CBS  
AMC Networks  
Oracle

## WEST OLYMPIC CORRIDOR

Bad Robot  
Indian Paintbrush  
Final Cut  
JBC Music  
Arsenal FX Color  
Digital Nation Entertainment  
Cutters  
Parks Mac Donald  
Planet Blue HQ  
Radical Media  
Threshold Entertainment

## BERGAMOT STATION

FIG Gallery  
Ikon Limited Fine Art  
Montalba Architects  
Sulkin Studio Architecture

## BERKELEY SM EAST

Blackbear Pictures  
Blue Bonsai  
Jenni Kayne  
Soundbox  
Apogee Electronics  
Cartel  
Yoga Glo



**Aleks Trifunovic, SIOR**

President  
310.899.2721  
atrifunovic@leewestla.com  
BKR DRE 01363109

**Tibor Lody, SIOR**

Principal  
310.899.2720  
tlody@leewestla.com  
AGT DRE 01261129

**Tommy Isola**

Principal  
310.899.2709  
tisola@leewestla.com  
AGT DRE 01974024

**Keith Fielding**

Principal  
310.899.2719  
kfielding@leewestla.com  
AGT DRE 01729915

**Adam Levine**

Associate  
310.899.2703  
alevine@leewestla.com  
AGT DRE 02104830

Lee & Associates Los Angeles West, Inc.  
1508 17th Street, Santa Monica, CA  
310.899.2700 | [www.leewestla.com](http://www.leewestla.com) | DRE 01222000