

CREATIVE OFFICE SPACES FOR LEASE IN FRANK GEHRY DESIGNED BUILDING



**1520 - 1528 CLOVERFIELD BOULEVARD
SANTA MONICA, CA 90404**



1520-1528 Cloverfield Blvd, Santa Monica

Designed by world renowned architect Frank Gehry, 1520 Cloverfield Blvd is a multi-tenant creative building located in the heart of Santa Monica's Media District. Formerly home to a wig company, Gehry moved into the building in the early 1960's with a revolutionary idea to creatively combine the existing traditional brick structure with new stainless steel fascia that envelopes the building's exterior. The end product, which still stands out today as one of the most successful adaptive-reuse projects in Los Angeles, is occupied by production, tech and media groups who are drawn to the loft-like creative office, rarely found in the area.



PREMISES

- Suite 1522 - A : 2,950 SF
- Suite 1524 - B : 2,000 SF
- Suite 1524 - C : 2,000 SF
- Suite 1524 - F : 2,000 SF
- Suite 1524 - G : 2,700 SF

RENT

\$3.85/SF MG

TERM

Negotiable

PARKING

1/1,000 available for free on-site (more parking available across the street at Colorado Center)

FEATURES

- Building Designed by World Renowned Architect Frank Gehry Who Headquartered in the Building for Over 30 Years
- Located in the Heart of the Santa Monica Media District
- Easy Access to Olympic Boulevard, Metro Stops, 10 Fwy, PCH
- 10' - 20' Ceiling Height
- Private Offices
- Individual Controllable HVAC Units Specific to Each Suite
- Ideal for Film & Media Companies
- High Quality Tenant Roster in Surrounding Area

CONTACT

Aleks Trifunovic, SIOR
 310.899.2721
 atrifunovic@leewestla.com
 BKR DRE 01363109

Tibor Lody, SIOR
 310.899.2720
 tlody@leewestla.com
 AGT DRE 01261129

Tommy Isola
 310.899.2709
 tisola@leewestla.com
 AGT DRE 01974024

Adam Levine
 310.899.2703
 alevine@leewestla.com
 AGT DRE 02104830



**1520 – 1528 CLOVERFIELD BLVD.
 SANTA MONICA, CA 90404**

LOCATION OVERVIEW

INTERSTATE
10

EXPO LINE

PLATFORM

CLOVERFIELD STREET

20TH STREET

OLYMPIC BLVD

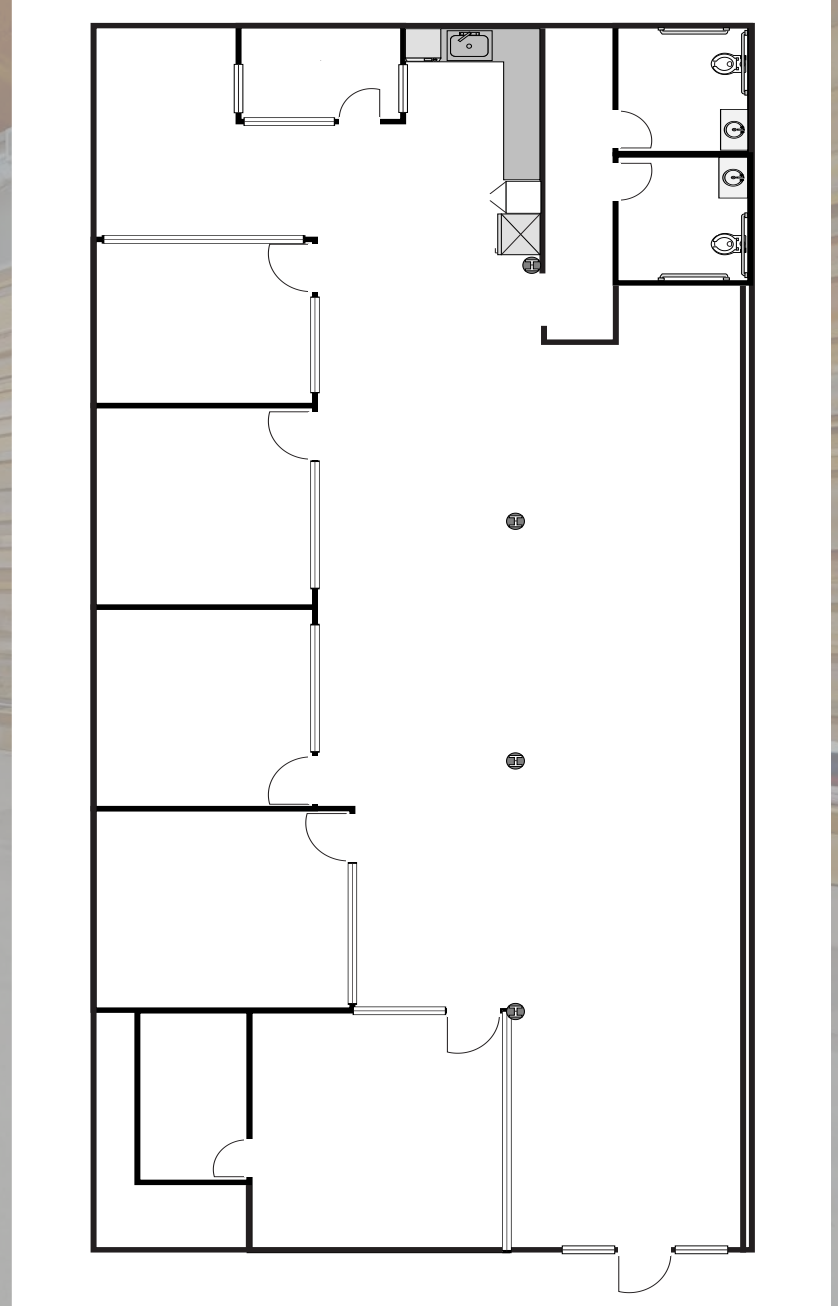
COLORADO AVE

SUBJECT PROPERTY

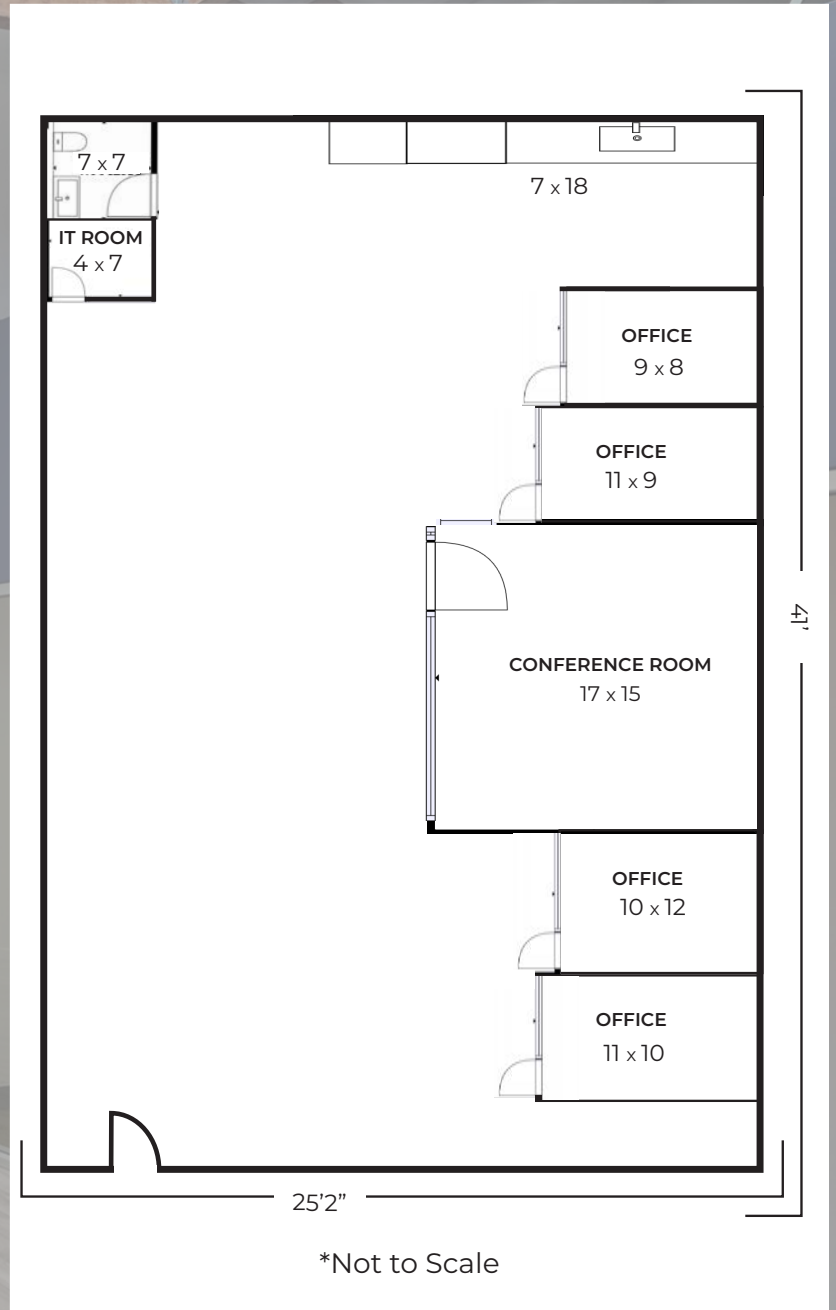
BROADWAY



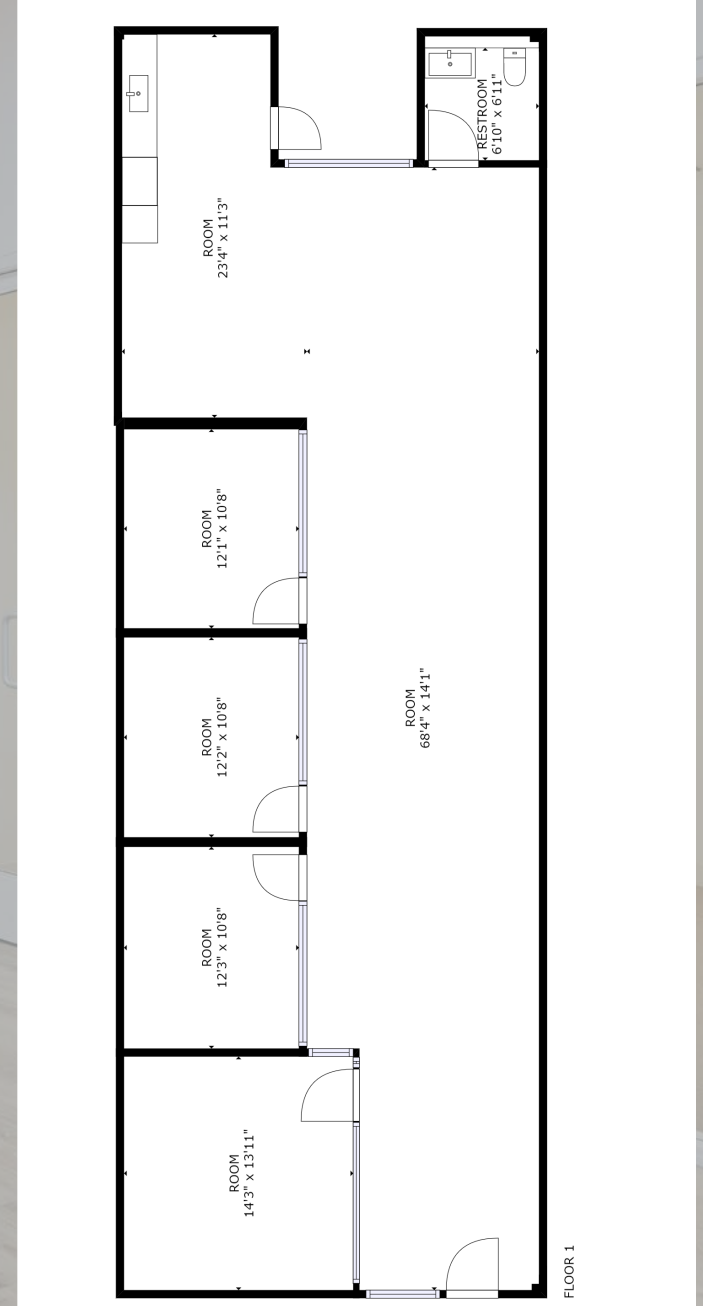
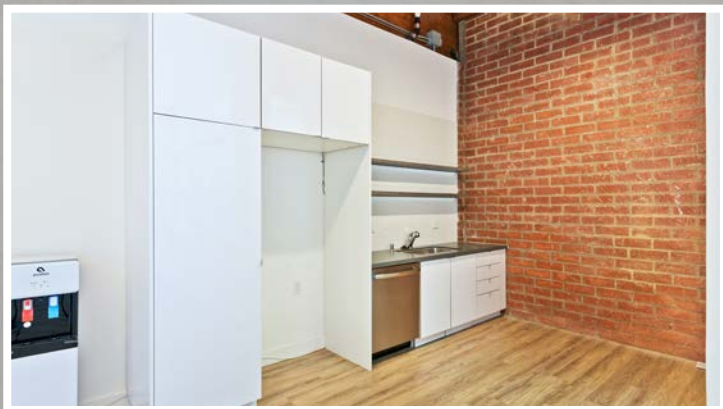
Suite 1522 - A : 2,950 SF



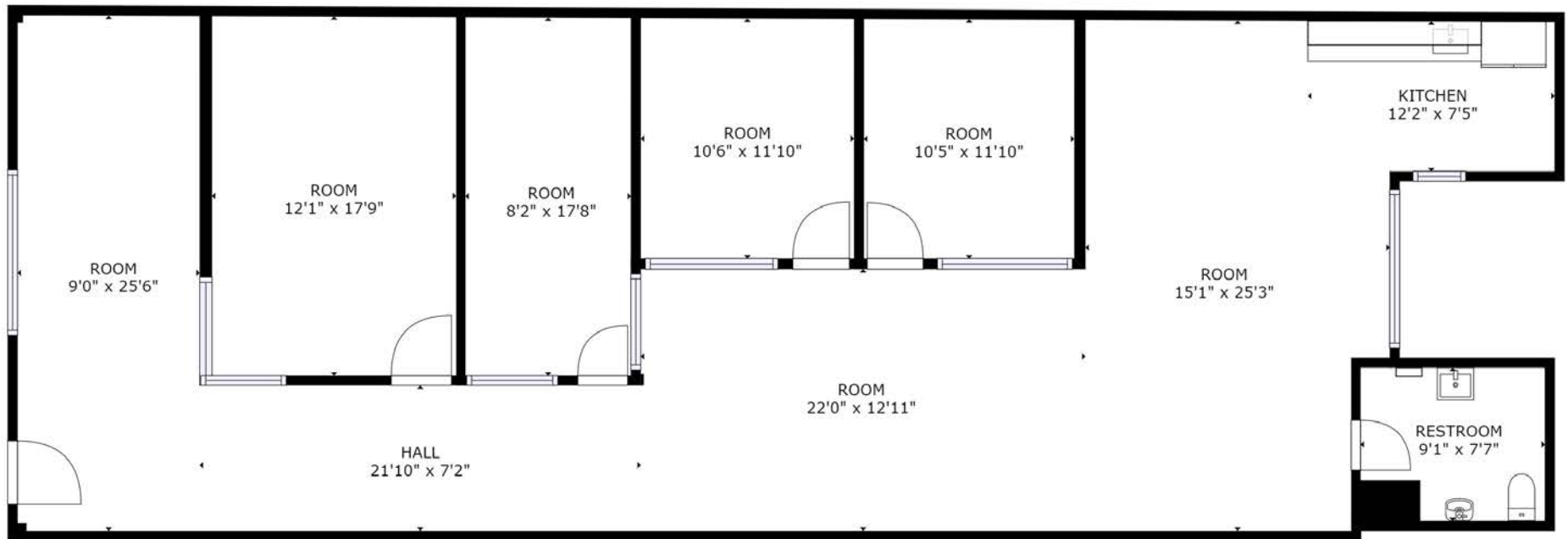
Suite 1524 - B : 2,000 SF



Suite 1524 - C : 2,000 SF

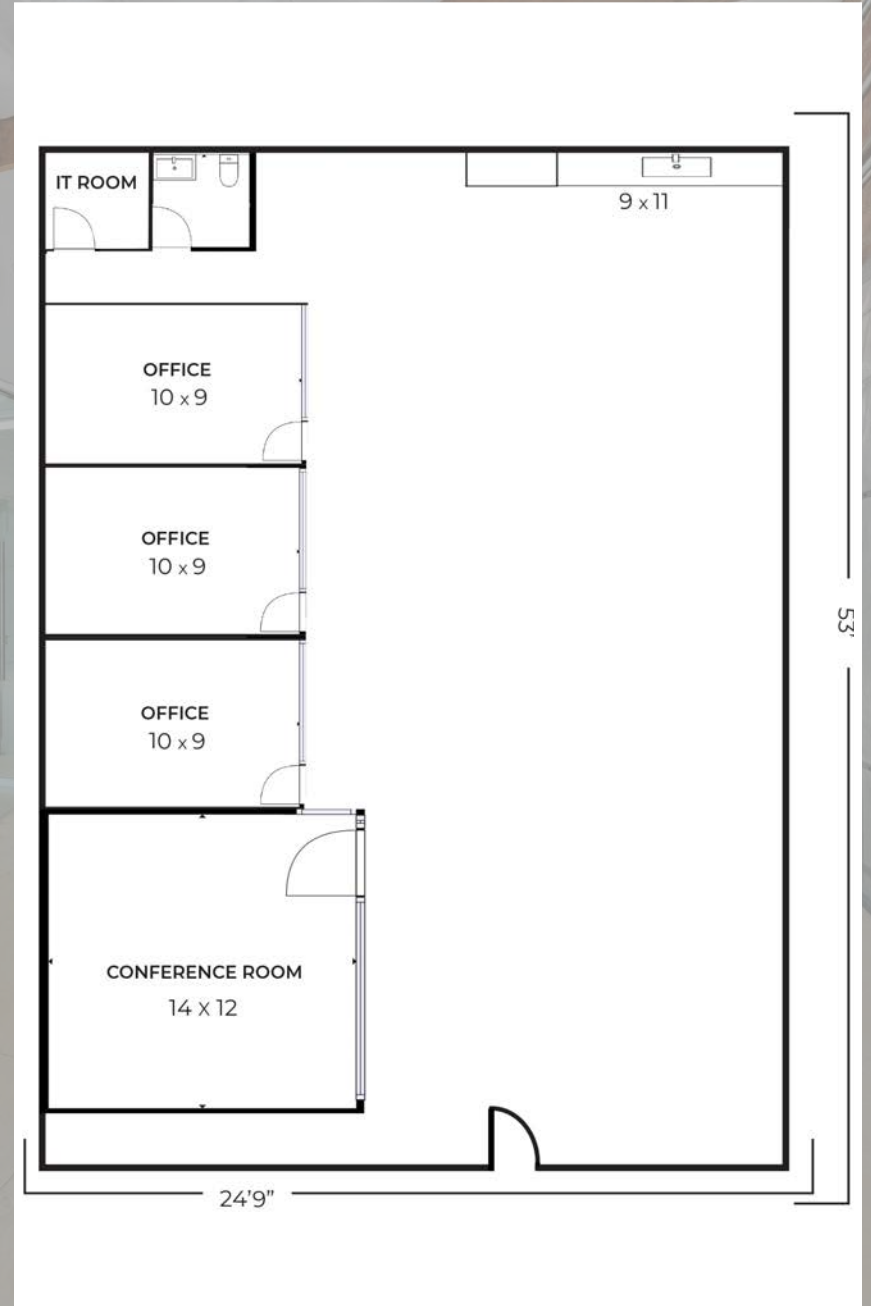
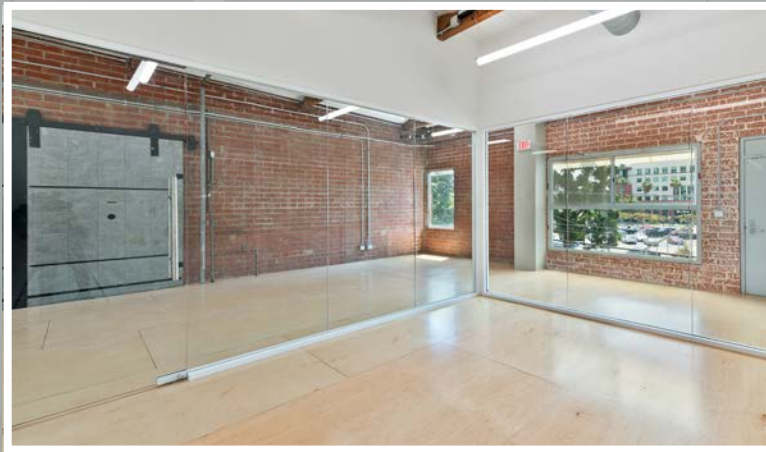


Suite 1524 - F : 2,000 SF



FLOOR 1

Suite 1524 - G : 2,700 SF



AMENITIES MAP



CHAUMONT BAKERY

CAFE RUISSEAU

TIATO

LIME CAFE

BERGAMOT CAFE

RALPH'S

RENOVO

SUBJECT PROPERTY

STARBUCKS

SALT & TART

GOODBOYBOB COFFEE

HUMMUS XPRESS

UPPERS CAFE

BREW WORKS

NEARBY MAJOR TENANTS

BROADWAY PLACE

General Editorial
TigerConnect
Cut + Run
Cosmo Street Editorial
Apache

MAD Architects
Rock Paper Scissors
Cross Creek Entertainment

COLORADO CENTER

HULU
HBO
Bird
ShoeDazzle

PENN FACTORY/PENN STATION

GoodRX
Kite Pharma
Redbull North America HQ
Tala
Center for Media & Design

1520-1528 CLOVERFIELD

COLORADO CORRIDOR

Viacom
Lionsgate
Interscope Records
Illumination
Gameshow Network
Universal Music Group
Starz Entertainment
Simple Practice
Goop
The Honest Company
FIGS
Reddit

WATER GARDEN

Amazon Studios
CBS
AMC Networks
Oracle

WEST OLYMPIC CORRIDOR

Bad Robot
Indian Paintbrush
Final Cut
JBC Music
Arsenal FX Color
Digital Nation Entertainment
Cutters
Parks Mac Donald
Planet Blue HQ
Radical Media
Threshold Entertainment

BERGAMOT STATION

FIG Gallery
Ikon Limited Fine Art
Montalba Architects
Sulkin Studio Architecture

BERKELEY SM EAST

Blackbear Pictures
Blue Bonsai
Jenni Kayne
Soundbox
Apogee Electronics
Cartel
Yoga Glo



Aleks Trifunovic, SIOR

President
310.899.2721
atrifunovic@leewestla.com
BKR DRE 01363109

Tibor Lody, SIOR

Principal
310.899.2720
tlody@leewestla.com
AGT DRE 01261129

Tommy Isola

Principal
310.899.2709
tisola@leewestla.com
AGT DRE 01974024

Keith Fielding

Principal
310.899.2719
kfielding@leewestla.com
AGT DRE 01729915

Adam Levine

Associate
310.899.2703
alevine@leewestla.com
AGT DRE 02104830

Lee & Associates Los Angeles West, Inc.
1508 17th Street, Santa Monica, CA
310.899.2700 | www.leewestla.com | DRE 01222000