

SANTA MONICA

1661

LINCOLN BLVD



A DIVISION OF
LEE &
ASSOCIATES

www.leewestla.com | dre 01222000

5,000 SF - 28,000 SF FOR LEASE
IN DOWNTOWN SANTA MONICA

ADDRESS 1661-1669 Lincoln Boulevard
Santa Monica, CA 90404

AVAILABLE SPACES 1st Floor - 5,692 SF (Retail / Office) **LEASED**
3rd Floor (Creative Office) : DIVISIBLE 5,000 - 14,131 SF
[Click for Virtual Tour](#)
4th Floor (Creative Office) : DIVISIBLE 5,000 - 14,131 SF
[Click for Virtual Tour](#)

RATE Months 1 - 12: \$1.50/SF, NNN
After: \$2.95/SF, NNN (nets = ± \$1.00/SF)

PARKING 3/1,000 @ \$175.00 per month

TERM 3-5 Years

AVAILABLE Immediate

- FEATURES
- Great accessibility and easy access to the 10 FWY, PCH & 405.
 - Beautiful creative space with natural light and exposed ceilings.
 - Gated parking structure with direct access to each available space.
 - Mature entrance courtyard with common area.
 - Very walkable with a multitude of restaurants and amenities close by.
 - Signage opportunity.



Lee & Associates Los Angeles West, Inc. of the foregoing information.
1508 17th Street, Santa Monica, CA 90404
310.899.2700 | www.leewestla.com | dre 01222000

LEASED (RETAIL)

SANTA MONICA
1661
LINCOLN BLVD



[Click for Virtual Tour](#)

GROUND FLOOR OFFICE/RETAIL **OFFICE/RETAIL FOR LEASE
DOWNTOWN SANTA MONICA**

SANTA MONICA
1661
LINCOLN BLVD



[Click for Virtual Tour](#)

INTERIOR **OFFICE/RETAIL FOR LEASE**
DOWNTOWN SANTA MONICA

SANTA MONICA
1661
LINCOLN BLVD



KITCHEN

**OFFICE/RETAIL FOR LEASE
DOWNTOWN SANTA MONICA**



SANTA MONICA
1661
LINCOLN BLVD



[Click for Virtual Tour](#)

INTERIOR

OFFICE/RETAIL FOR LEASE
DOWNTOWN SANTA MONICA

SANTA MONICA
1661
LINCOLN BLVD



4TH FLOOR : DIVISIBLE 5,000 - 14,131 SF

3RD FLOOR : DIVISIBLE 5,000 - 14,131 SF

1661

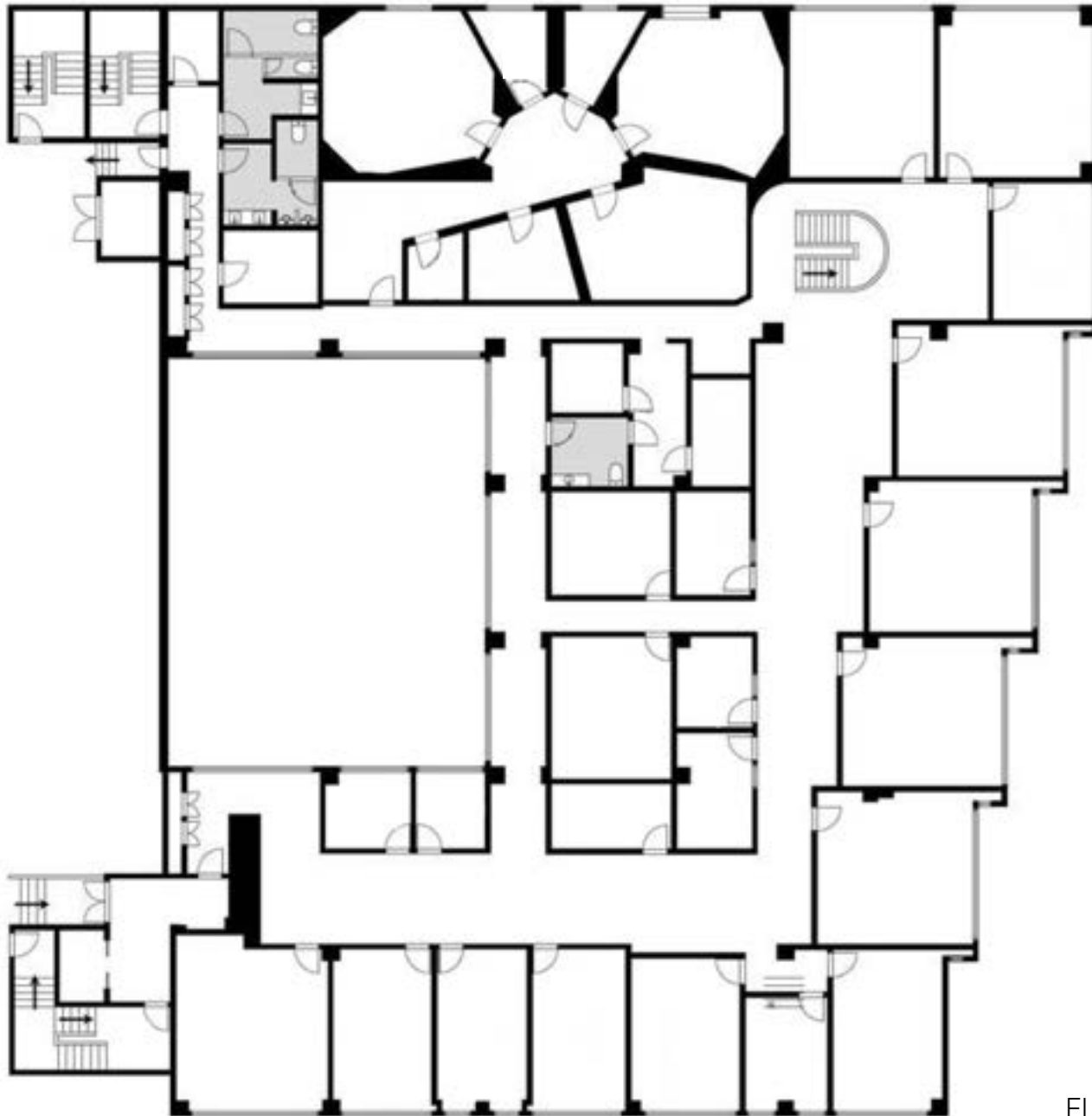
TOP TWO FLOORS AVAILABLE FOR LEASE **OFFICE/RETAIL FOR LEASE DOWNTOWN SANTA MONICA**

SANTA MONICA
1661
LINCOLN BLVD

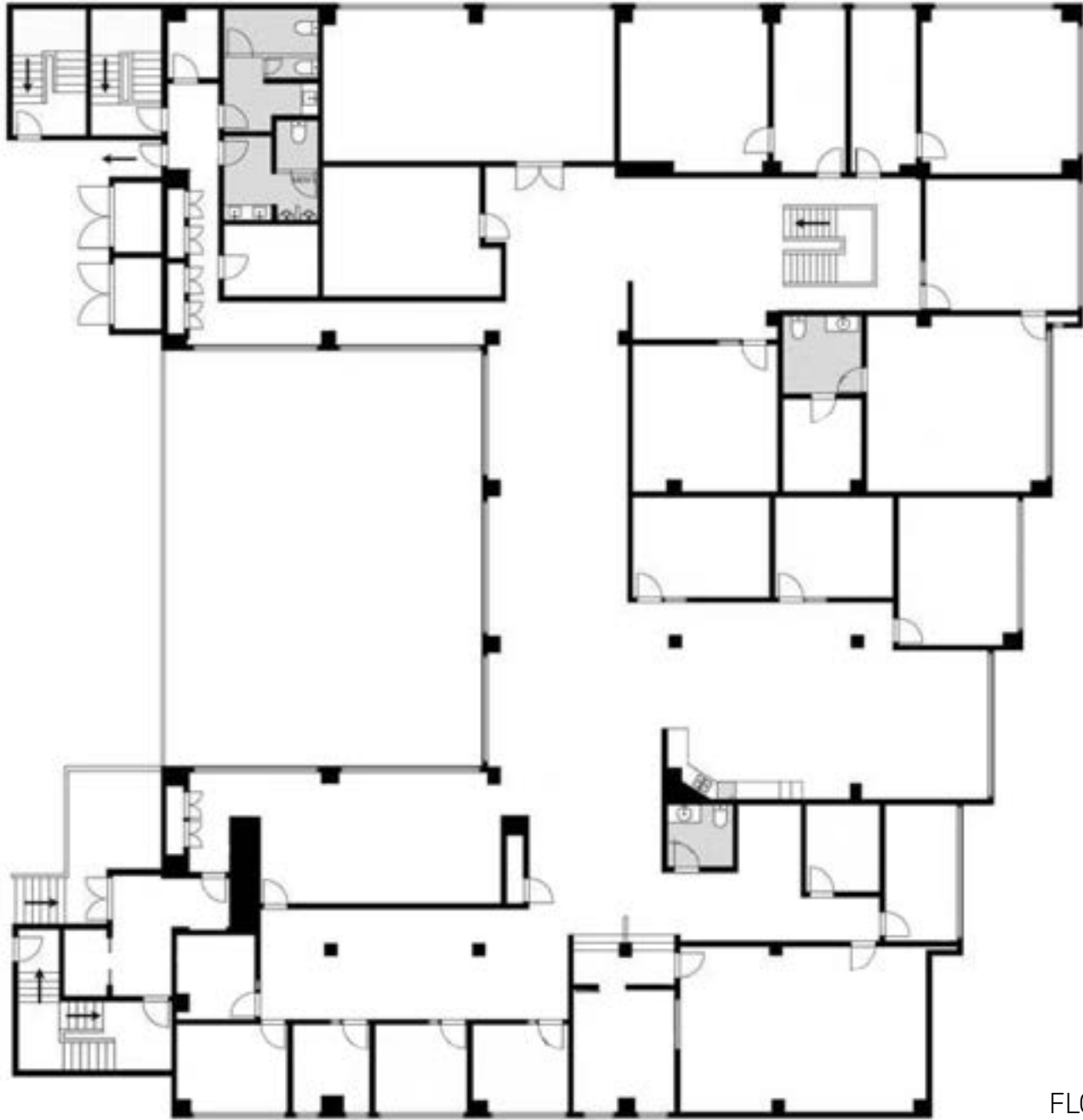
LEASED (RETAIL)

RETAIL AVAILABLE FOR LEASE

OFFICE/RETAIL FOR LEASE
DOWNTOWN SANTA MONICA



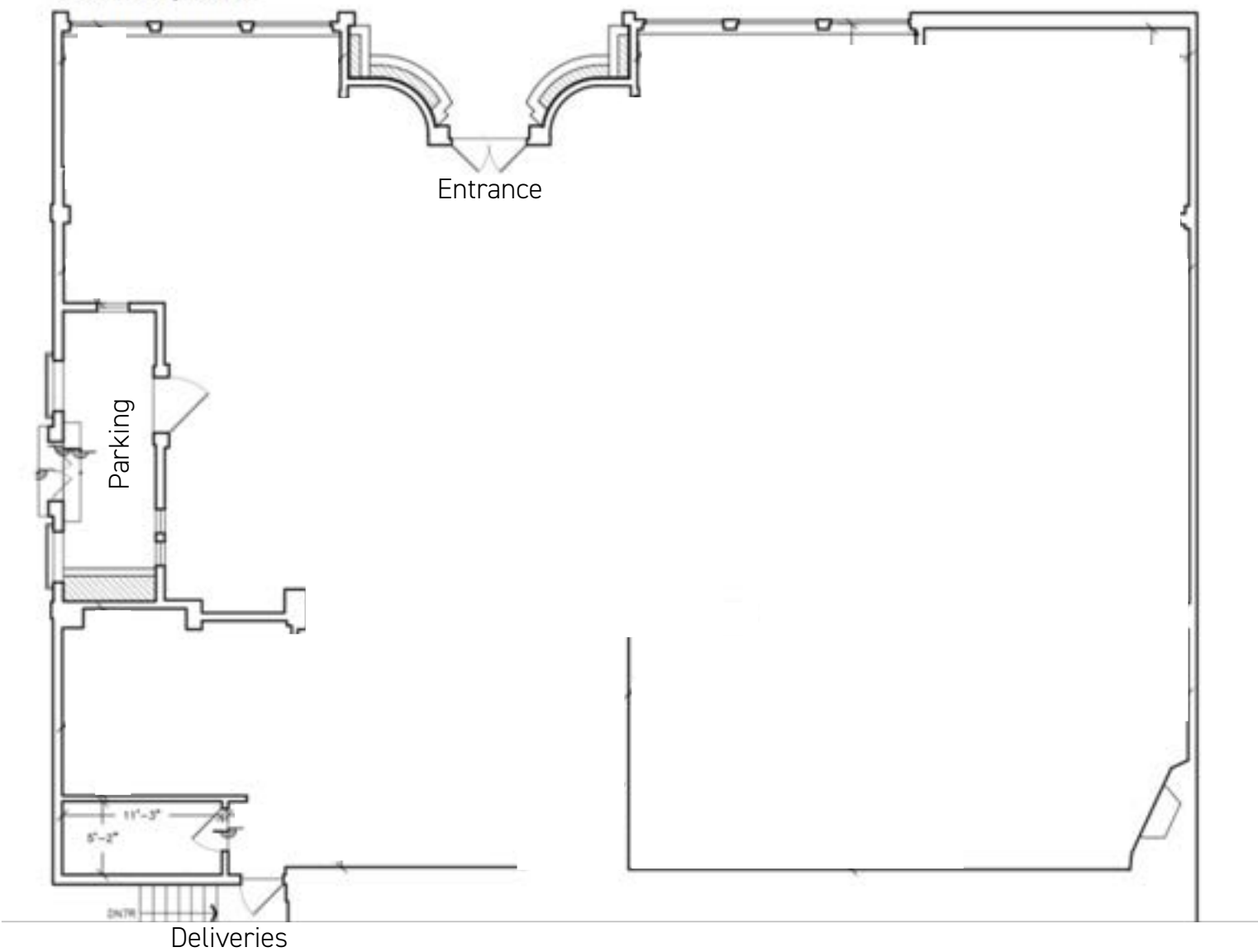
FLOOR PLAN (3rd floor)



FLOOR PLAN (4th floor)

Lincoln Blvd

Suite 100 - 5,692 RSF



FLOOR PLAN (Office/Retail)

Walk Score

92

Walker's Paradise

Daily errands do not require a car.

Transit Score

76

Excellent Transit

Transit is convenient for most trips.

Bike Score

95

Biker's Paradise

Daily errands can be accomplished on a bike.



Santa Monica, California



Santa Monica is a beach side city spanning 8.3 square miles located on the westside of Los Angeles County. With 3.5 miles of pristine coastline, Santa Monica offers a mix of natural beauty, tree lined residential communities, booming commercial districts and a variety of recreational activities. A diverse business economy and an unparalleled quality of life, prove Santa Monica to be an incomparable destination to both live, work or visit. Santa Monica was recently named one of the Top “10 Beach Cities in the World” by National Geographic and one of the “Best Places to Live” by TIME Magazine. The residential population is approximately 93,000, growing to approximately 250,000 through the day which includes tourists, shoppers and employees. Tourism is one the city’s top industries attracting over 8 million visitors annually.

Santa Monica was founded in 1875 and incorporated in 1886. In the years after it was incorporated, floods of people poured into the city on both the Southern Pacific Railroad and the Sante Fe Railroad. With the surge of new residents, a real estate boom was set into motion. The growth continued with the addition of five Piers, commercial buildings on Second and Third Street, and the establishment of Douglas Aircraft, which is now the Santa Monica Airport.

As home to the headquarters of such notable businesses as Hulu, Universal Music, Illumination Entertainment, Lionsgate Films, HBO and a variety of tech startups, Santa Monica has made a name for itself in the entertainment and tech industries.





Cassia

Sweetfin

Pono Burger

Bodega Wine Bar

Bay Cities

Blue Daisy

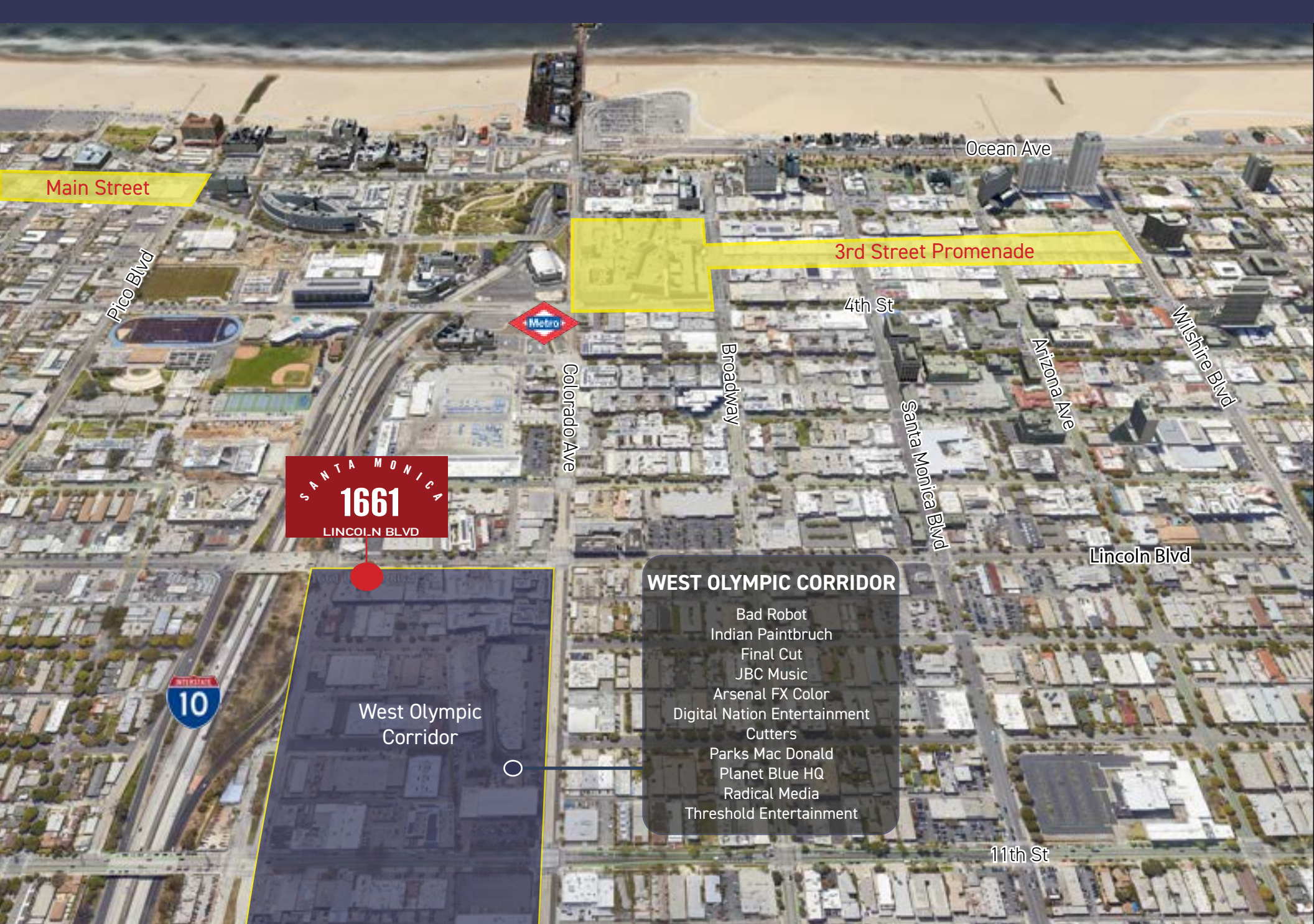
The Hive

Trader Joe's

Mel's Drive-in

SUBJECT PROPERTY

NEARBY AMENITIES



Main Street

Ocean Ave

3rd Street Promenade

4th St

Pico Blvd



Colorado Ave

Broadway

Arizona Ave

Wishire Blvd

Santa Monica Blvd

SANTA MONICA
1661
LINCOLN BLVD

Lincoln Blvd

WEST OLYMPIC CORRIDOR

- Bad Robot
- Indian Paintbrush
- Final Cut
- JBC Music
- Arsenal FX Color
- Digital Nation Entertainment
- Cutters
- Parks Mac Donald
- Planet Blue HQ
- Radical Media
- Threshold Entertainment

West Olympic Corridor

11th St

NEARBY TENANTS

OFFICE/RETAIL FOR LEASE
DOWNTOWN SANTA MONICA

SANTA MONICA
1661

LINCOLN BLVD

ALEKS TRIFUNOVIC, SIOR

PRESIDENT

310.899.2721

atrifunovic@leewestla.com

BRK DRE 01363109

TIBOR LODY, SIOR

PRINCIPAL

310.899.2720

tlody@leewestla.com

AGT DRE 01261129

THOMAS ISOLA

PRINCIPAL

310.899.2709

tisola@leewestla.com

AGT DRE 01974024

KEITH FIELDING

PRINCIPAL

310.899.2719

kfielding@leewestla.com

AGT DRE 01729915

ADAM LEVINE

ASSOCIATE

310.899.2703

alevine@leewestla.com

AGT DRE 02104830



A DIVISION OF
**LEE &
ASSOCIATES**

www.leewestla.com | dre 01222000

**OFFICE/RETAIL FOR LEASE
DOWNTOWN SANTA MONICA**