

CULVER
6001
BRISTOL PKY
CITY

FIRST YEAR \$1.95/SF, MG

ACROSS FROM TIKTOK HQ

NEAR THE 90 & 405 FREEWAY

3,828 SF - 7,656 SF - 2nd Floor Office
FOR LEASE



A DIVISION OF

LEE &
ASSOCIATES

www.leewestla.com | dre 01222000

PREMISES 3,828 - 7,656 SF (2nd Floor)

RATE Months 1 - 12: \$1.95/SF, MG
After: \$2.75/SF, MG

PARKING 27 Spaces for Free

LAYOUT:
- 7 Private Offices
- 2 Conference Rooms
- 2 Outdoor Decks
- Private Bathrooms
- Kitchen and Break Area
- 2 Entrances

FEATURES
- Combination of private offices and open space with flexibility further build-out if needed
- Abundance of parking
- Easy access to the suite
- Close proximity to the 90 and 405 Freeway

CONTACT

Aleks Trifunovic, SIOR
President
310.899.2721
atrifunovic@leewestla.com
BKR DRE 01363109

Tommy Isola
Principal
310.899.2709
tisola@leewestla.com
AGT DRE 01974024

Adam Levine
Associate
310.899.2703
alevine@leewestla.com
AGT DRE 02104830



Lee & Associates Los Angeles West, Inc.
1508 17th Street, Santa Monica, CA 90404
310.899.2700 | www.leewestla.com | dre 01222000

No warranty or representation is made to the accuracy of the foregoing information.
Terms of sale or lease are subject to change or withdrawal without notice.

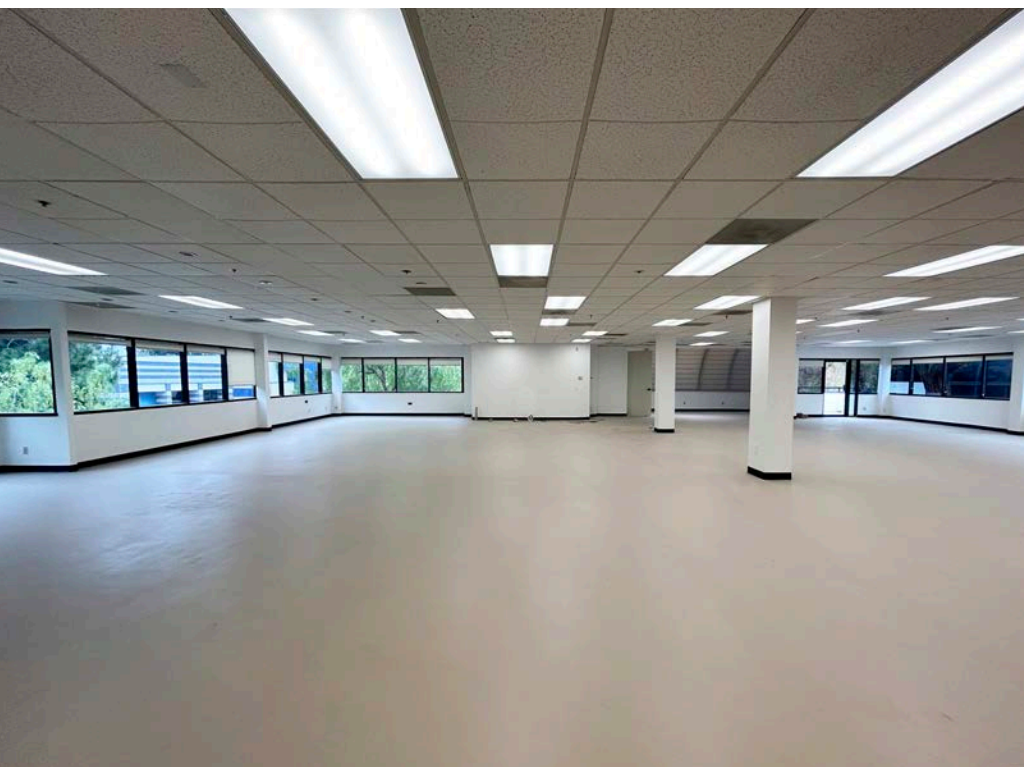
CULVER
6001
BRISTOL PKY
CITY





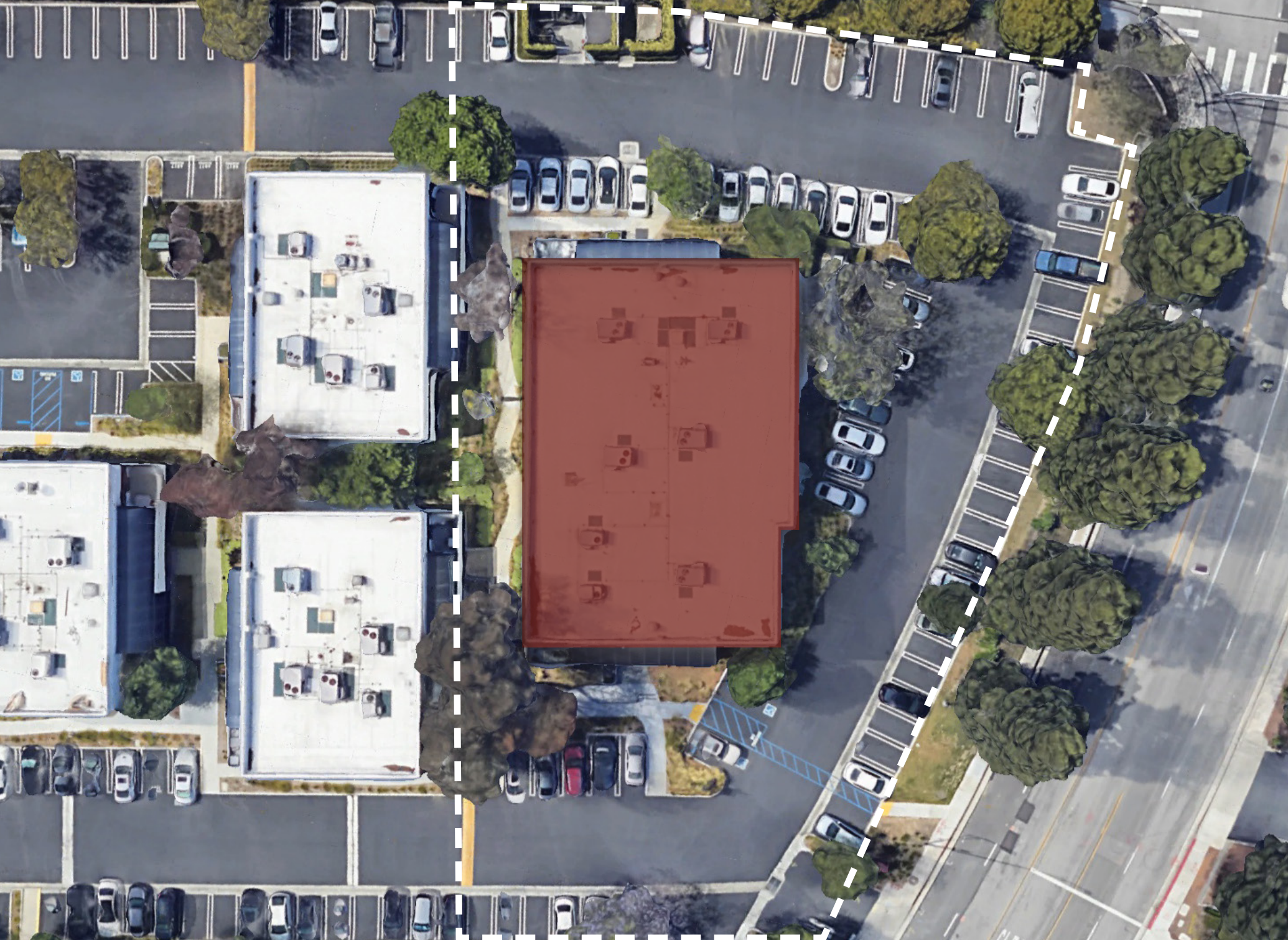
PHOTOS | EXTERIOR |

6001 BRISTOL PKY



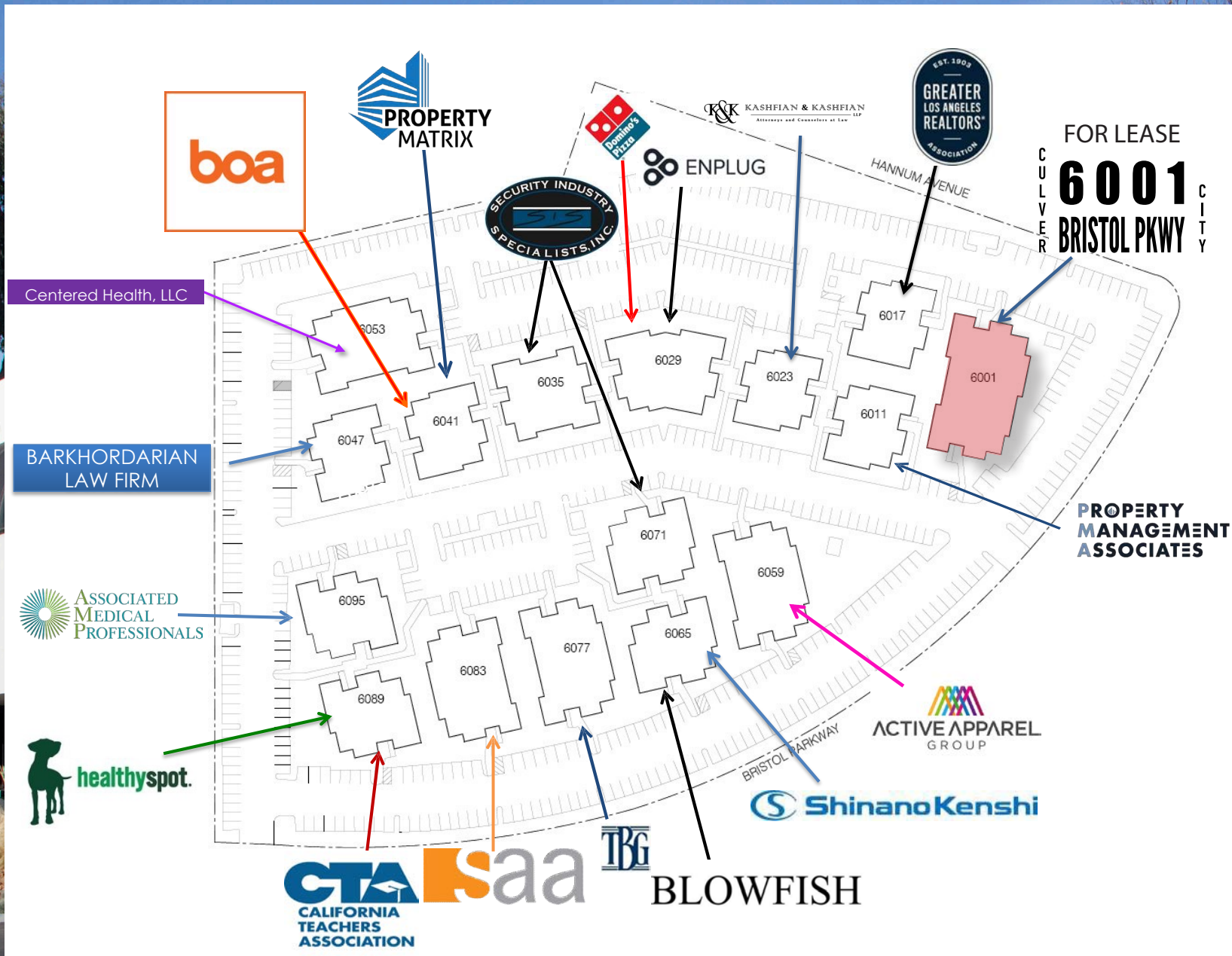
PHOTOS | INTERIOR |

6001 BRISTOL PKY



PARKING MAP |

6001 BRISTOL PKY





 NortonLifeLock

 TikTok



 HAAS ENTERTAINMENT SYSTEMS

 petnet solutions

 Medtronic

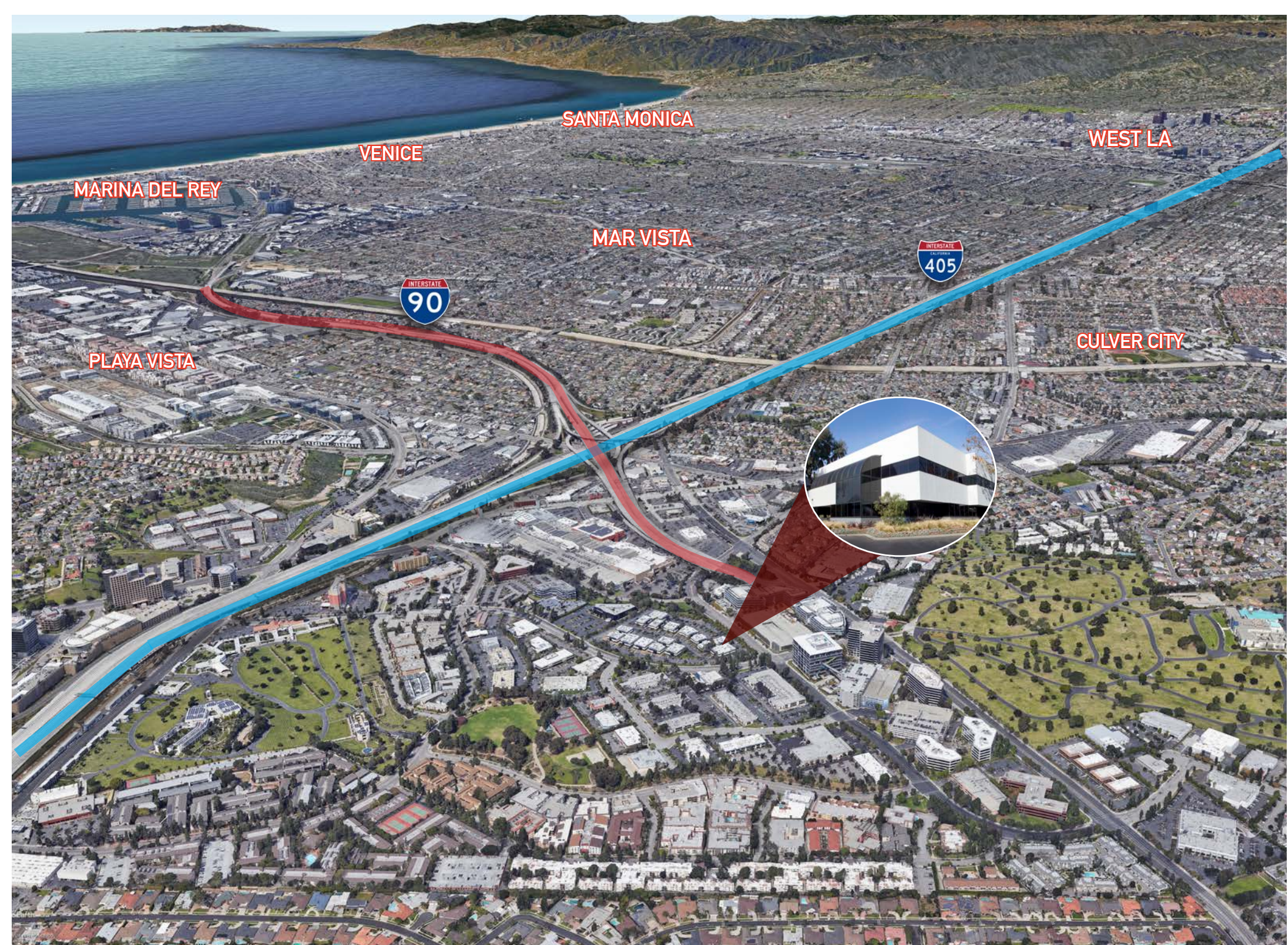
 APPIA BIO

 PSYCHEMEDICS
Superior Science. Superior Results.

 TOMS

TENANTS IN THE AREA |

6001 BRISTOL PKY



MARINA DEL REY

VENICE

SANTA MONICA

WEST LA

MAR VISTA



PLAYA VISTA

CULVER CITY



AERIAL |

6001 BRISTOL PKY

CULVER
6001
BRISTOL PKY
CITY



Aleks Trifunovic, SIOR

President

310.899.2721

atrifunovic@leewestla.com

BKR DRE 01363109

Tibor Lody, SIOR

Principal

310.899.2720

tlody@leewestla.com

AGT DRE 01261129

Keith Fielding

Principal

310.899.2719

kfielding@leewestla.com

AGT DRE 01729915

Tommy Isola

Principal

310.899.2709

tisola@leewestla.com

AGT DRE 01974024

Adam Levine

Associate

310.899.2703

alevine@leewestla.com

AGT DRE 02104830

Lee & Associates Los Angeles West, Inc.
1508 17th Street, Santa Monica, CA
310.899.2700 | www.leewestla.com | DRE 01222000