

**5711
BUCKINGHAM
PARKWAY**

EXISTING FILM PRODUCTION FACILITY

1800 AMPS OF POWER



A DIVISION OF
**LEE &
ASSOCIATES**

± 28,340 SF
Standalone Flex/Industrial/Production Building
For Lease in Culver City



PROPERTY INFORMATION

PREMISES

Total: ± 28,340 SF
Warehouse: ± 10,938 SF
Office: ± 17,402 SF

RENT

\$2.50/SF, NNN

AVAILABILITY

Immediate

TERM

Negotiable

POWER

1800 Amps - 120/208 Volt - 3 Phase - 4 Wire
(Tenant to Verify)

LOADING

Two (2) Dock High Doors (10'Wx15'H)
Two (2) Ground Level Doors (10'Wx15'H)

PARKING

68 Reserved Spaces Free of Cost

FEATURES

- Unique standalone flex building opportunity in Culver City
- 22' Clear Height
- Former soundstage facility
- Fully Sprinklered
- HVAC throughout offices
- High speed fiber internet service capability
- Ability to combine with neighboring property for an additional **21,397 SF**

CONTACTS

Aleks Trifunovic, SIOR
310.899.2721
atrifunovic@leewestla.com
BKR DRE 01363109

Tommy Isola
310.899.2709
tisola@leewestla.com
AGT DRE 01974024

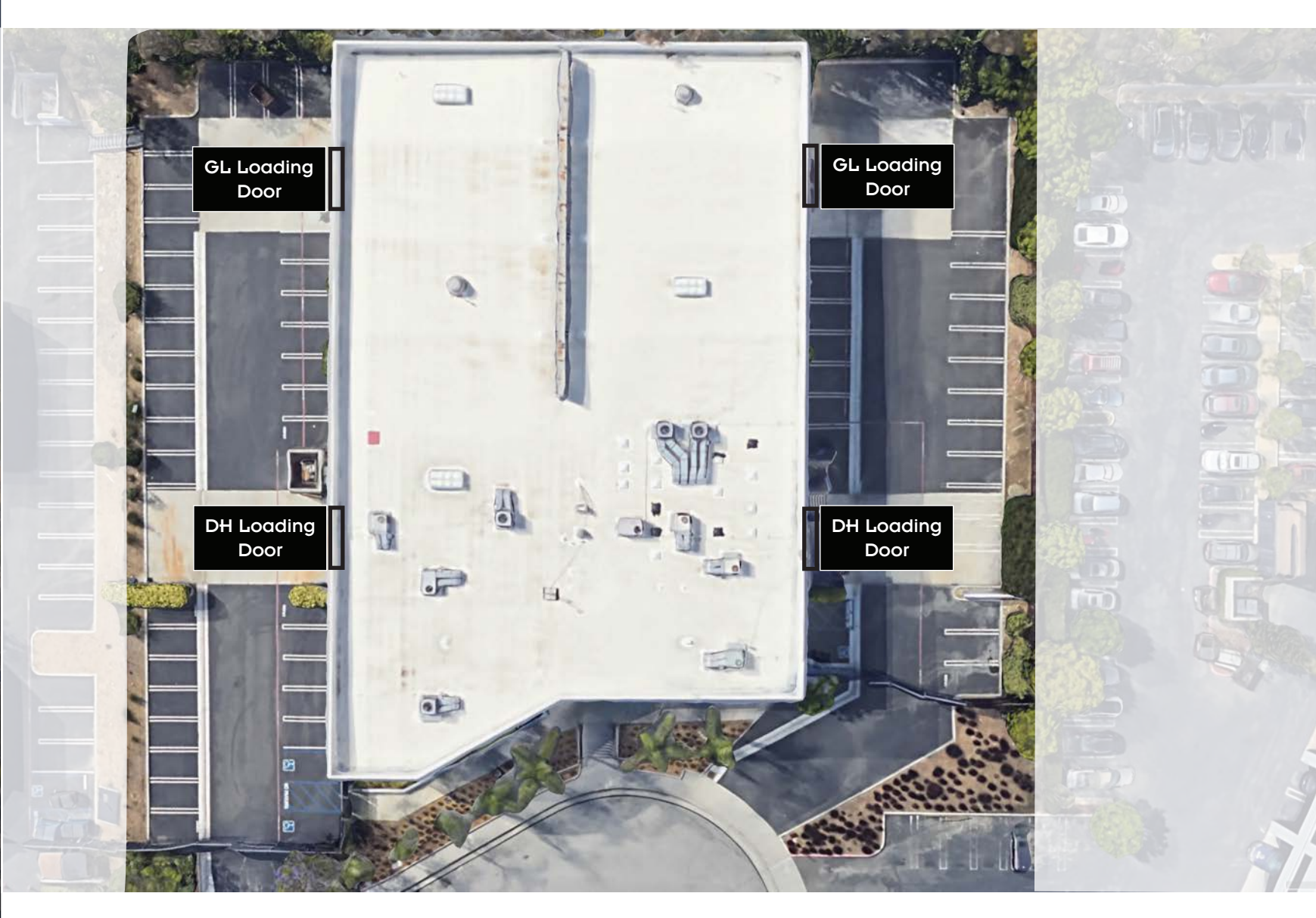
Adam Levine
310.899.2703
alevine@leewestla.com
AGT DRE 02104830



1508 17th Street, Santa Monica, CA | 310.899.2700
WWW.LEEWESTLA.COM | DRE 01222000

No warranty or representation is made to the accuracy of the foregoing information. Terms of sale or lease are subject to change or withdrawal without notice.

ARIEL



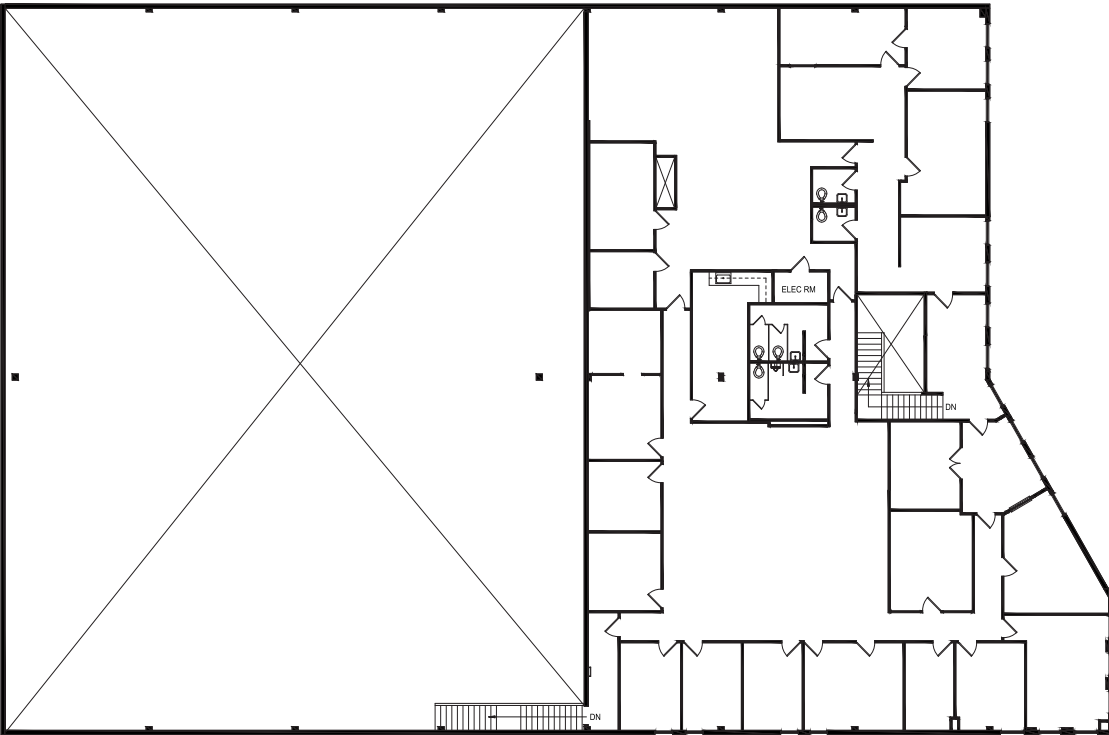
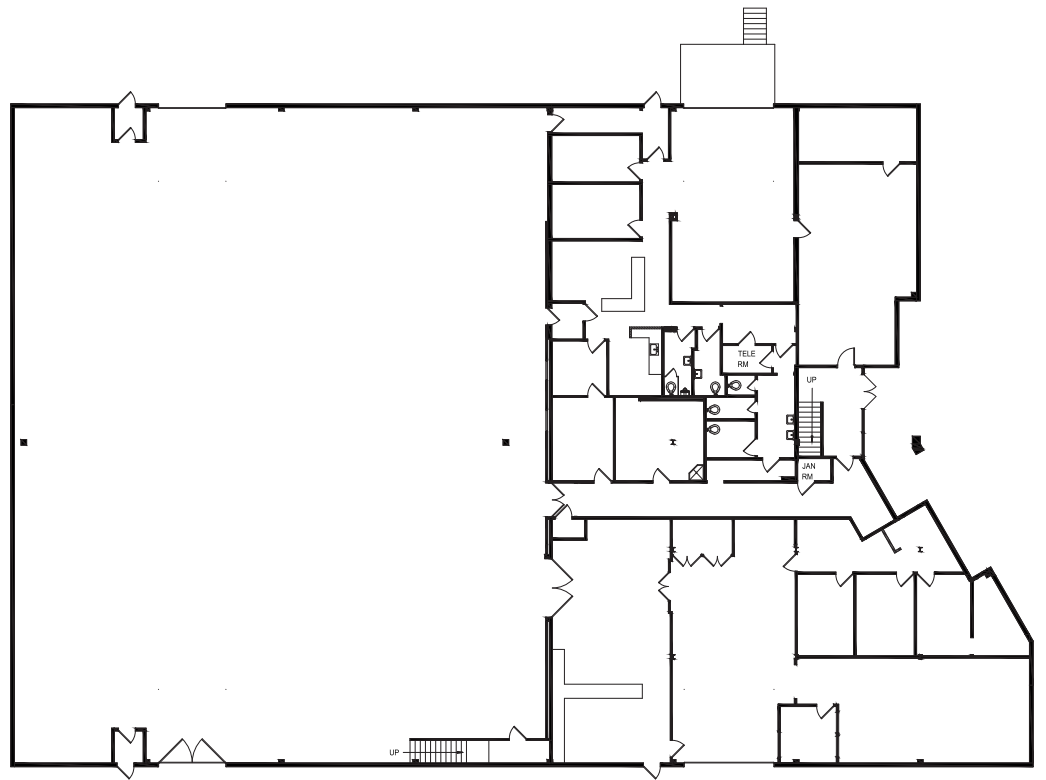
A DIVISION OF



LEE &
ASSOCIATES

FLOOR PLANS

FIRST FLOOR



SECOND FLOOR

INTERIOR PHOTO



A DIVISION OF
LEE &
ASSOCIATES

SITE MAP

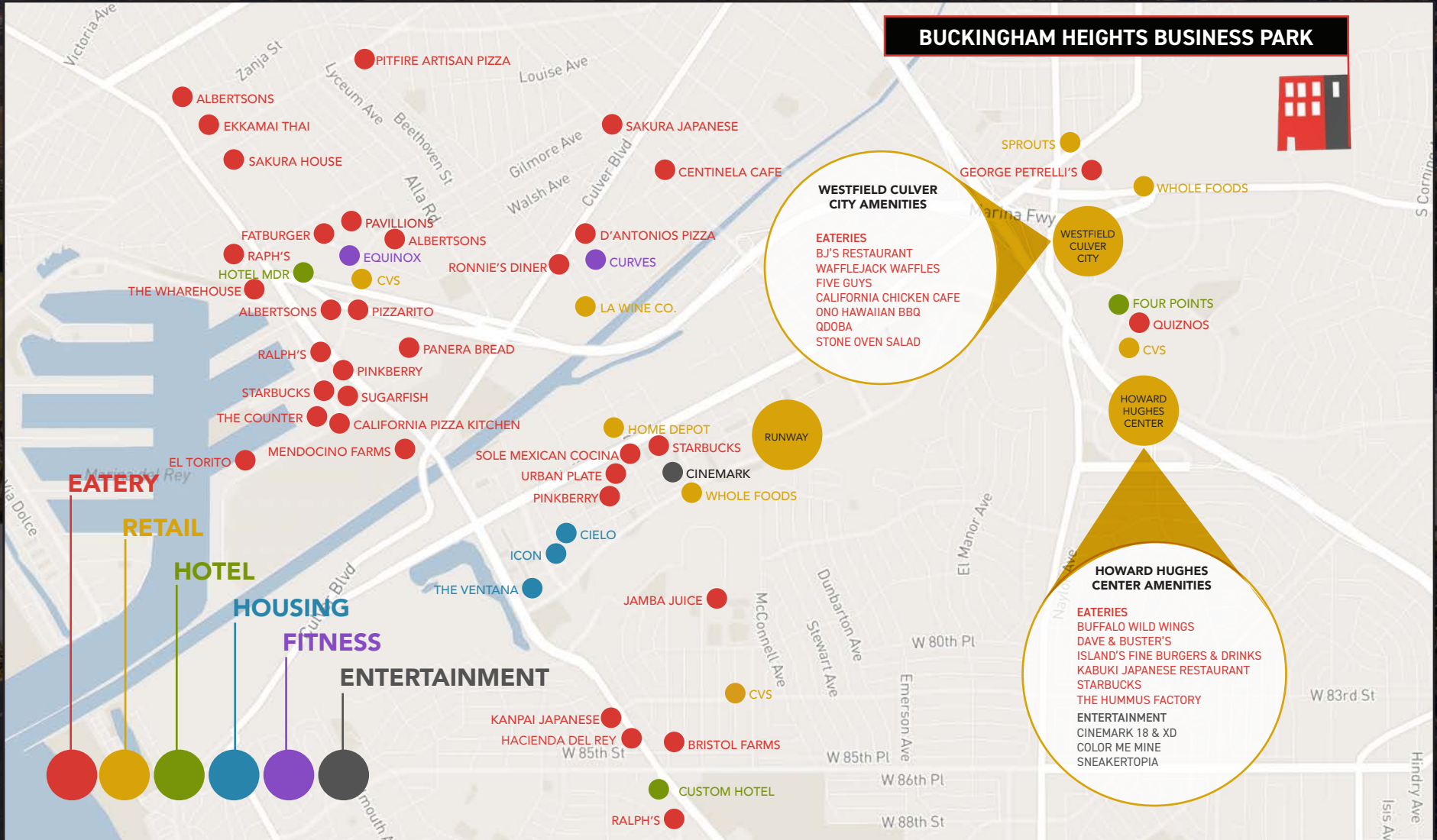


A DIVISION OF



LEE &
ASSOCIATES

AMENITY MAP





5711

Aleks Trifunovic, SIOR

President

310.899.2721

atrifunovic@leewestla.com

BKR DRE 01363109

Tommy Isola

Principal

310.899.2709

tisola@leewestla.com

AGT DRE 01974024

Adam Levine

Associate

310.899.2703

alevine@leewestla.com

AGT DRE 02104830

Lee & Associates Los Angeles West, Inc.
1508 17th Street, Santa Monica, CA
310.899.2700 | www.leewestla.com | DRE 01222000

No warranty or representation is made to the accuracy of the foregoing information.