

# Sublease Plug & Play Space in Beverly Hills





## Property Information

**Premises:** ± 2,138 RSF

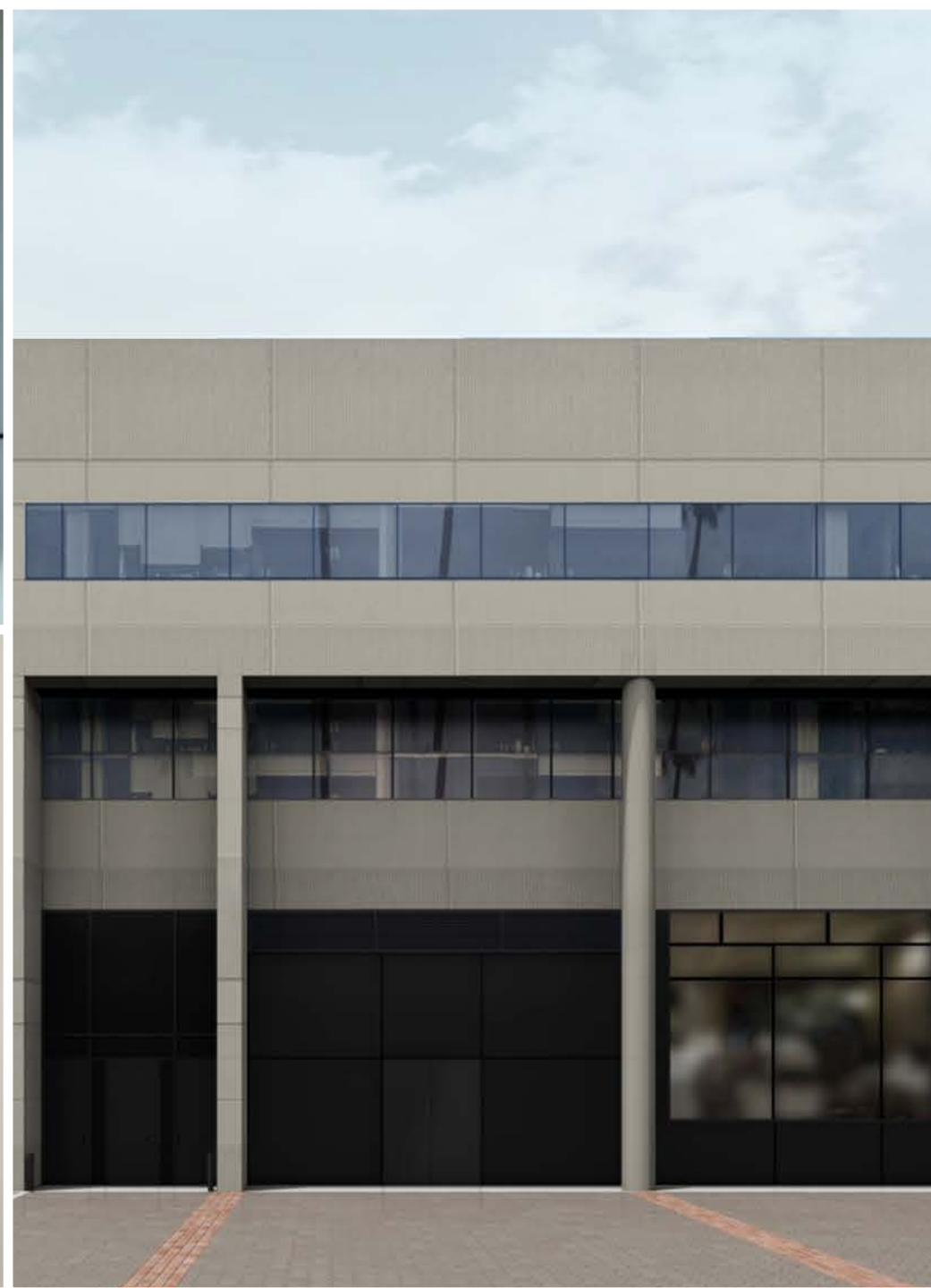
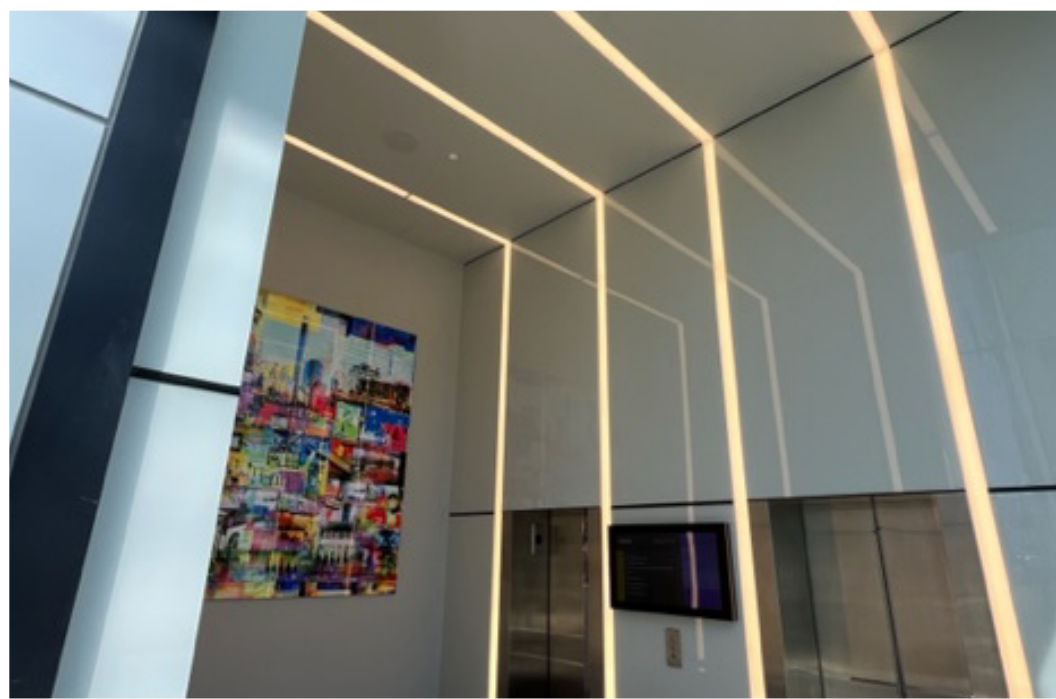
**Term:** 1 Year

**Asking Rate:** \$5.25/SF, FSG

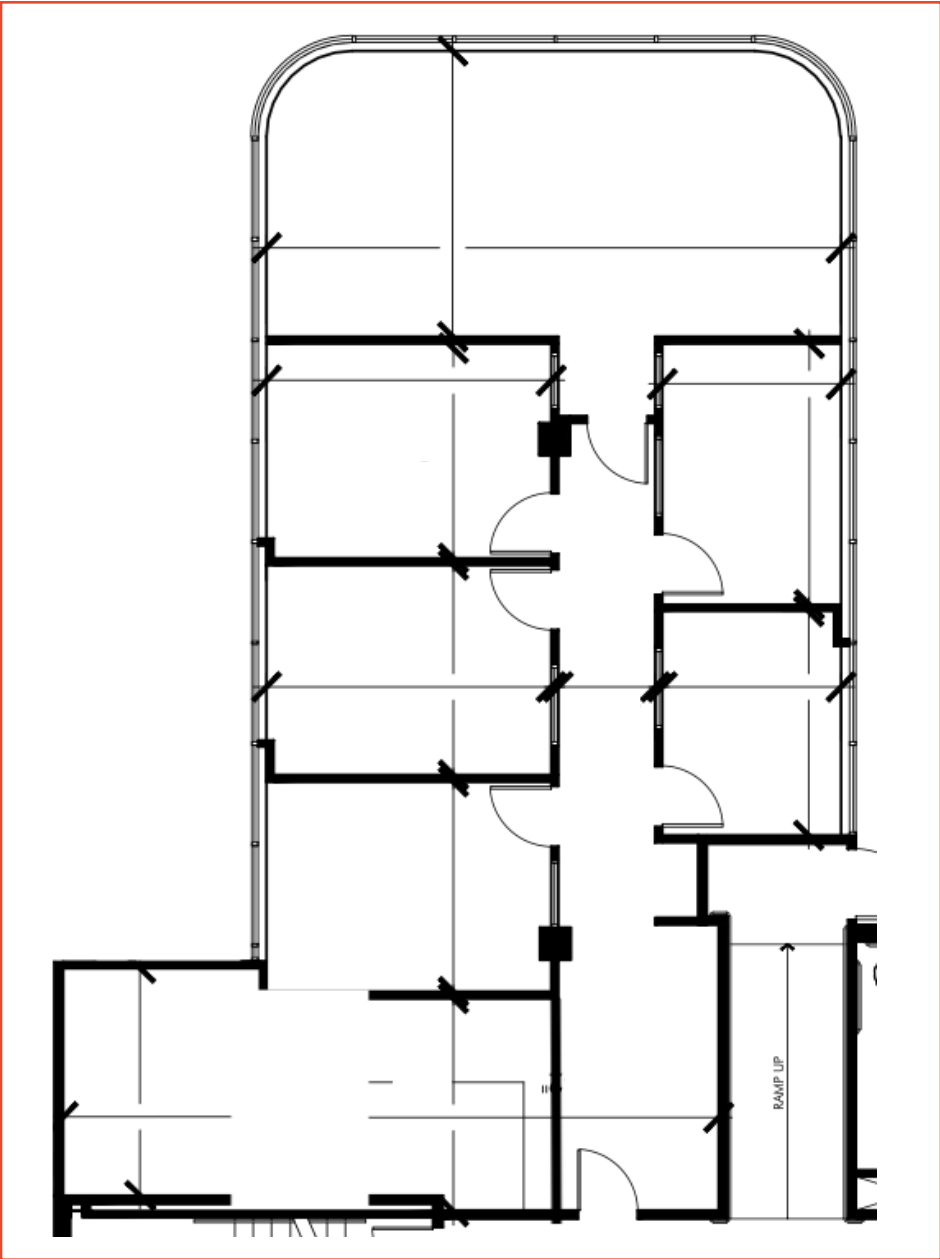
**Parking:** 8 unreserved parking spaces @ \$135/space/month

**Description:**

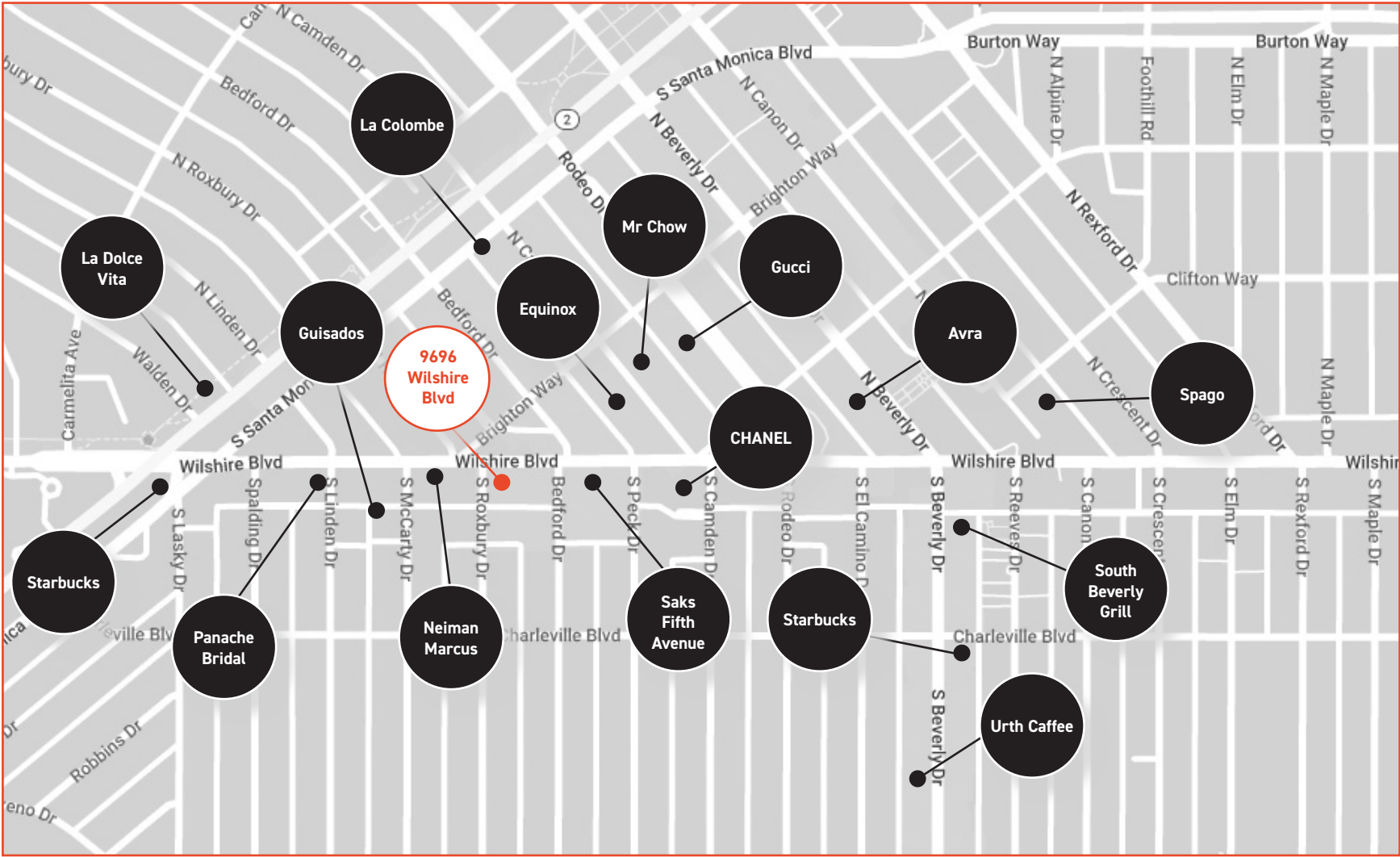
- Plug & play space in prime Beverly Hills Triangle location
- Newly renovated building exterior, lobby and common areas
- Direct access to highly improved courtyard
- Steps away from limitless amenities in The BH Triangle & South Beverly Drive



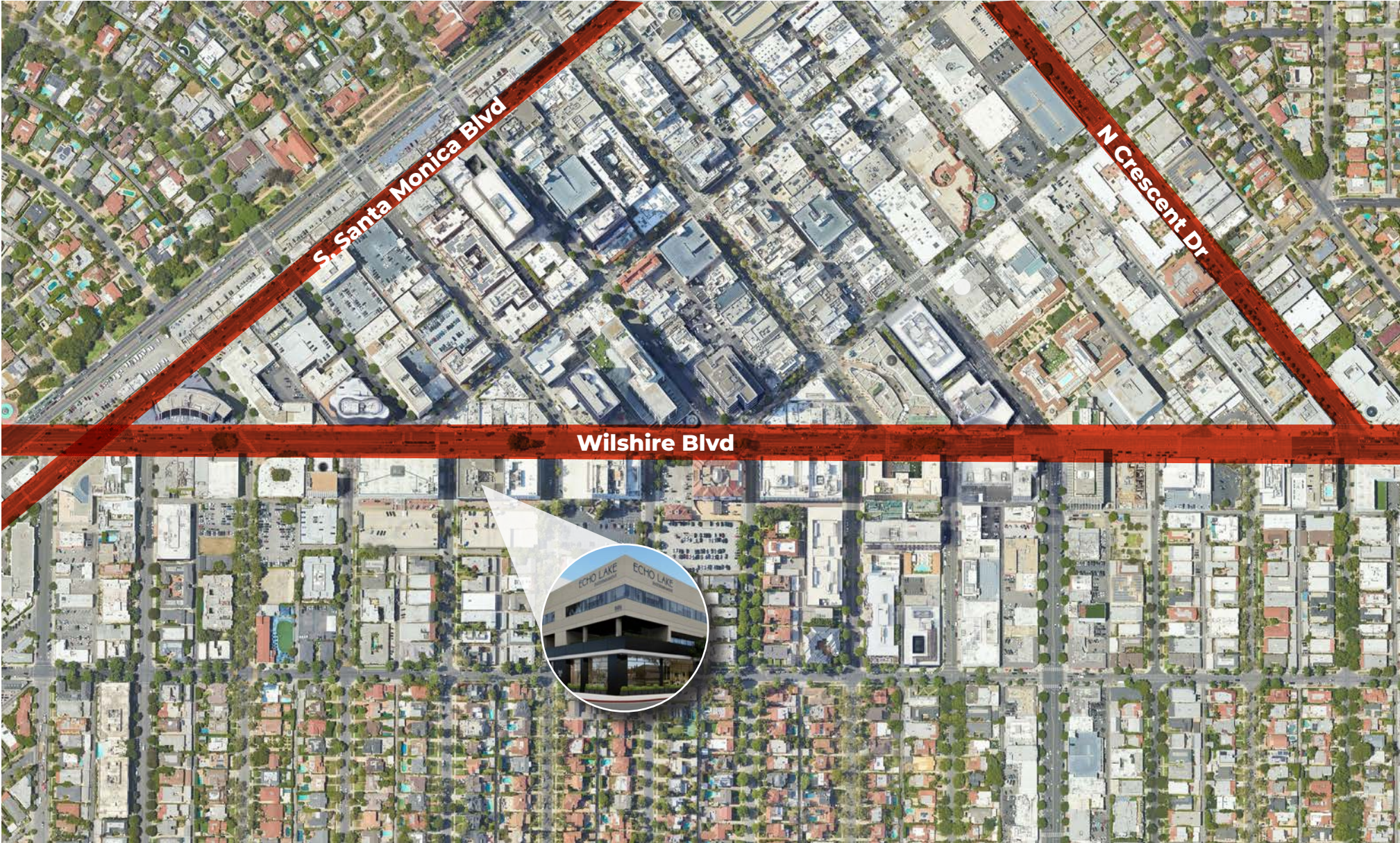
# Floor Plan



# Nearby Amenities



# Aerial View



# Contact

**Seth Wellisch**

310.899.2734

[swellisch@leewestla.com](mailto:swellisch@leewestla.com)

AGT DRE 01335793

Lee & Associates Los Angeles West, Inc.  
1508 17th Street, Santa Monica, CA 90404  
[www.leewestla.com](http://www.leewestla.com) | DRE 01222000



**9696 Wilshire Blvd #210  
Beverly Hills, CA 90212**