

RETAIL COMMERCIAL BUILDING WITH 7.5 CARS PER 1,000 SF





Property Information

PREMISES	RENT	OCCUPANCY	TERM	PARKING	FEATURES
± 17,800 SF	\$72 RSF Annually NNN	No later than 06/01/2025	5 - 15 Years	135 Spaces (1 acre of parking)	<ul style="list-style-type: none"> - Potentially divisible to 10,000 SF and 7,800 SF - Adjacent to Vons market - Double bow truss ceilings - 5,500 SF bonus basement - Power 1,000 Amp, 208 volts

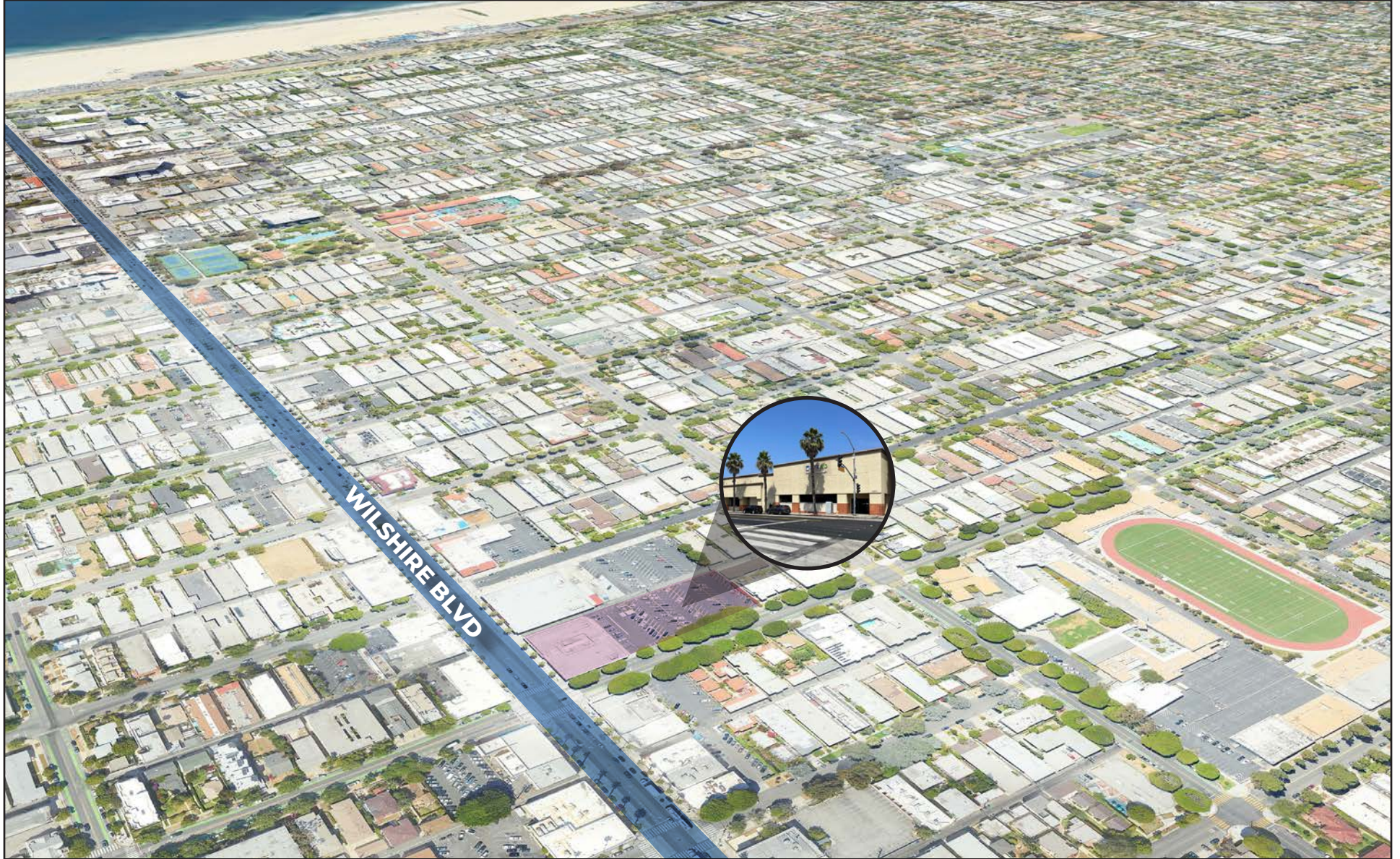


A DIVISION OF

LEE & ASSOCIATES

1331 Wilshire Blvd.
 Santa Monica, CA 90405

AERIAL MAP



1331 Wilshire Blvd.
Santa Monica, CA 90405

BIRD'S-EYE VIEW



A DIVISION OF
LEE & ASSOCIATES

1331 Wilshire Blvd.
Santa Monica, CA 90405

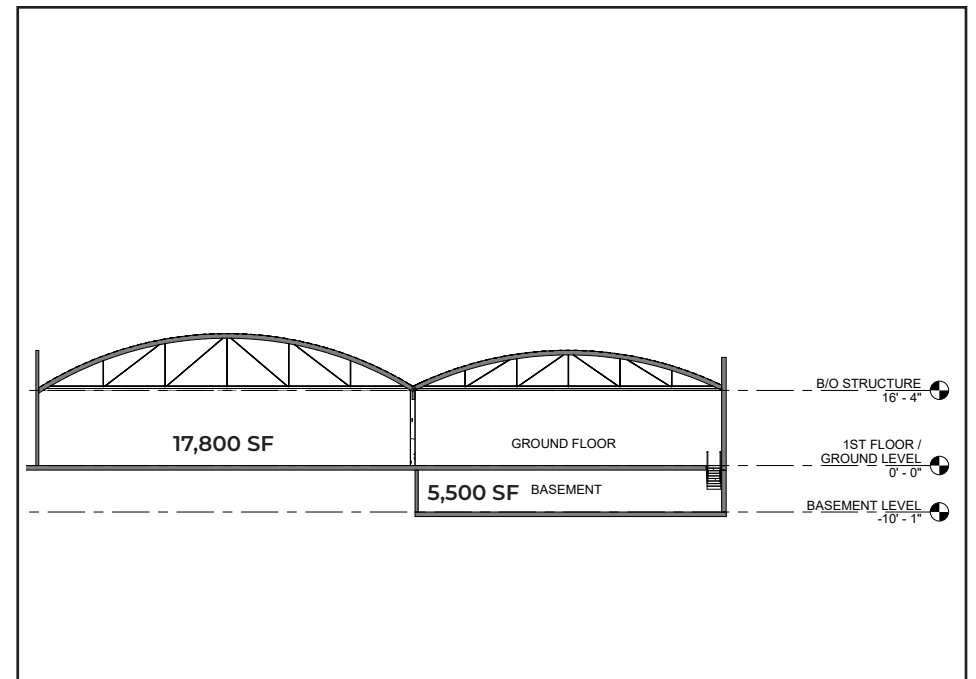
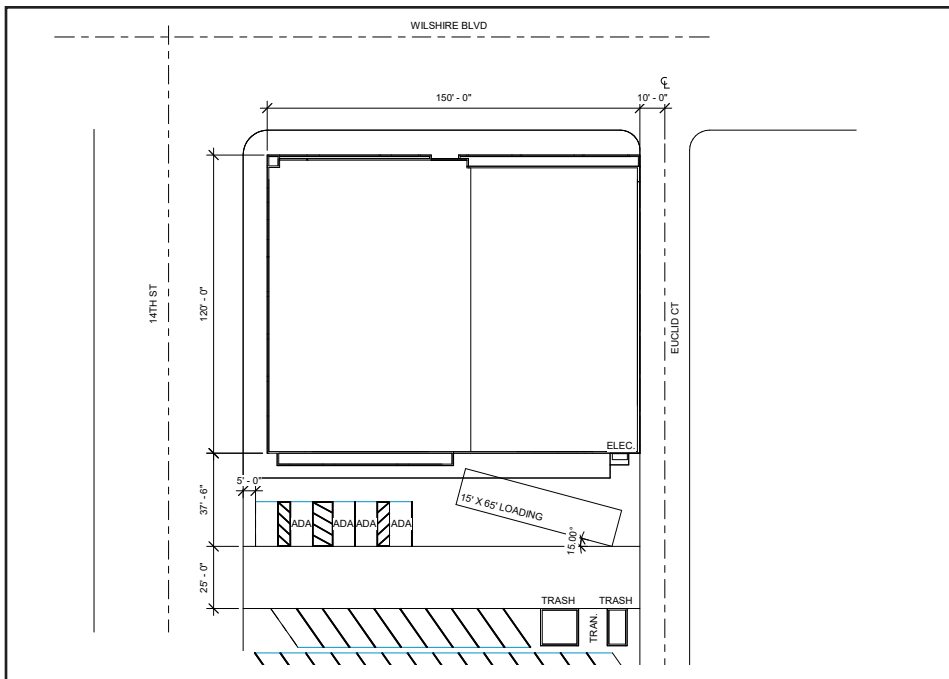
AMENITIES MAP



A DIVISION OF
LEE & ASSOCIATES

1331 Wilshire Blvd.
Santa Monica, CA 90405

SITE PLAN & ELEVATION



A DIVISION OF
LEE & ASSOCIATES

1331 Wilshire Blvd.
 Santa Monica, CA 90405

CONTACT



Thrifty PHARMACY

ROBERT DUBBINS

AGT DRE 02070848
rdubbins@leewestla.com
310.899.2704

1508 17th Street, Santa Monica, CA
www.leewestla.com | DRE 01222000

No warranty or representation is made to the accuracy of the foregoing information.
Terms of sale or lease are subject to change or withdrawal without notice.



A DIVISION OF

