

1735 Stewart St
Santa Monica, CA 90404

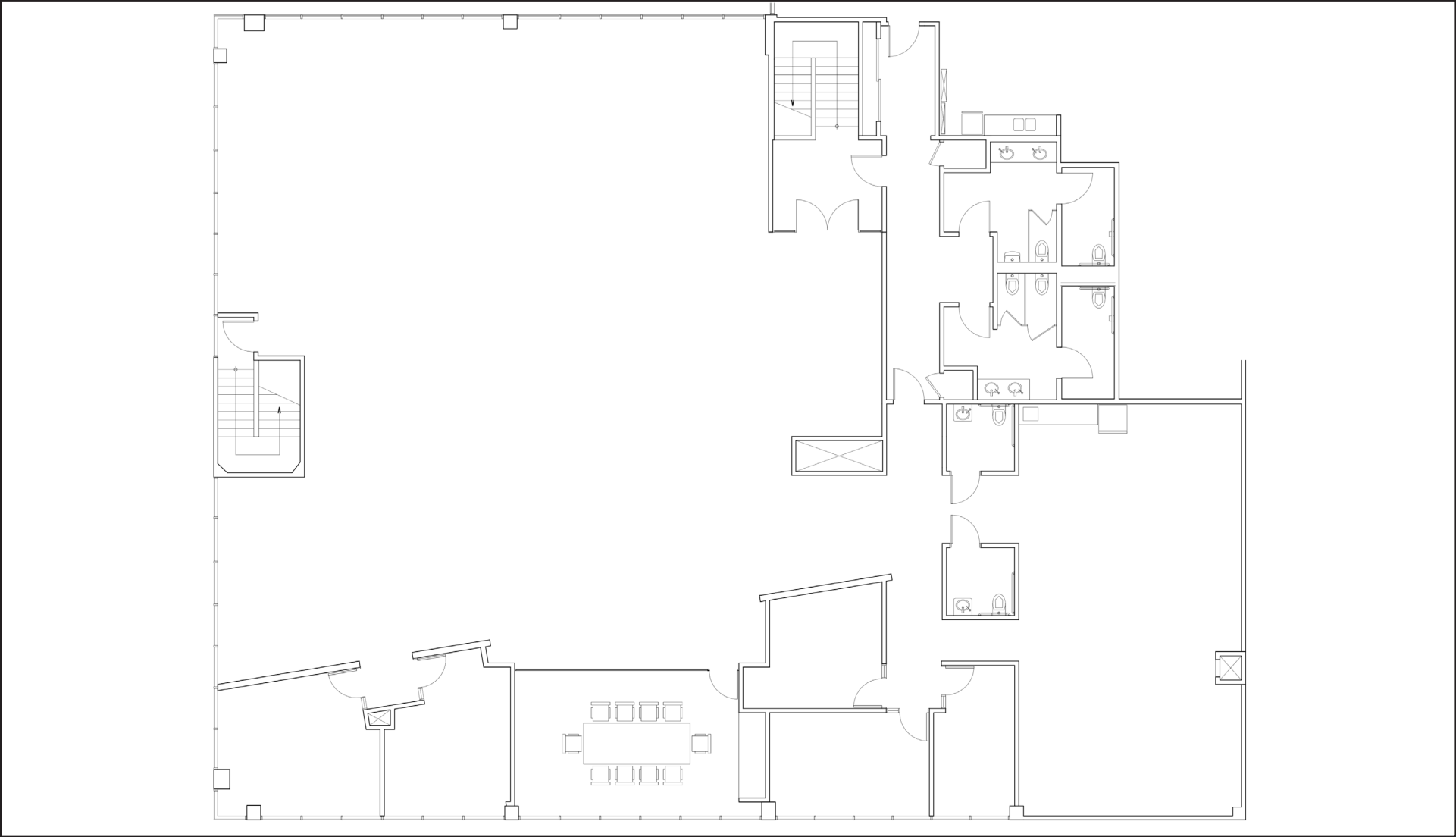


1735 Stewart St

Santa Monica, CA 90404

PREMISES	± 6,865 SF
RENT	\$3.00 SF/MG
OCCUPANCY	Available Immediately
PARKING	2/1,000
TERM	1-3 Years
FEATURES	<ul style="list-style-type: none">- Open Floor Plan- Exposed Beams & Trusses- Exposed Ducting- Abundant Natural Light- 100% HVAC
CONTACT	<p>Douglas R. Marshall, SIOR 310.899.2745 dmarshall@leewestla.com BRE 00869275</p> <p>Ian Ameche 310.899.2748 iameche@leewestla.com BRE 01976053</p>





1735 Stewart St Santa Monica, CA 90404



1735 Stewart St Santa Monica, CA 90404



5 Minutes From Stewart to Olympic/26th Station

1735 Stewart St
Santa Monica, CA 90404



DOUGLAS R. MARSHALL, SIOR

310.899.2745
dmarshall@leewestla.com
BRE: 00869275

IAN AMECHE

310.899.2748
iameche@leewestla.com
BRE: 01976053

No warranty or representation is made to the accuracy of the foregoing information.
Terms of sale or lease are subject to change or withdrawal without notice.