

# 729 CENTINELA AVENUE

INGLEWOOD, CA 90302



A DIVISION OF



**FOR SALE OR LEASE**



# FEATURES

- Example Permitted Uses\* include Medical, Retail, Fitness, Gyms and Studios
- 4 Standard Loading Dock Garage Doors
- 1 Four Foot Loading Dock
- 800 Amps - 3 Phase Power
- 5,000 SF Flex/R&D Area/2,140 SF Office
- 5 Enclosed Offices Plus Full Kitchen
- Additional 700 SF Mezzanine Storage
- 14 Parking Spaces
- Security Gate Around the Entire Property



No warranty or representation is made to the accuracy of the foregoing information. Terms of sale or lease are subject to change or withdrawal without notice.

\*Subject to City Approval. Tenant shall verify Business Use with the City.

## PREMISES

± 7,140 SF Building  
± 13,504 SF Lot

## PRICE

Contact Broker

## RENT

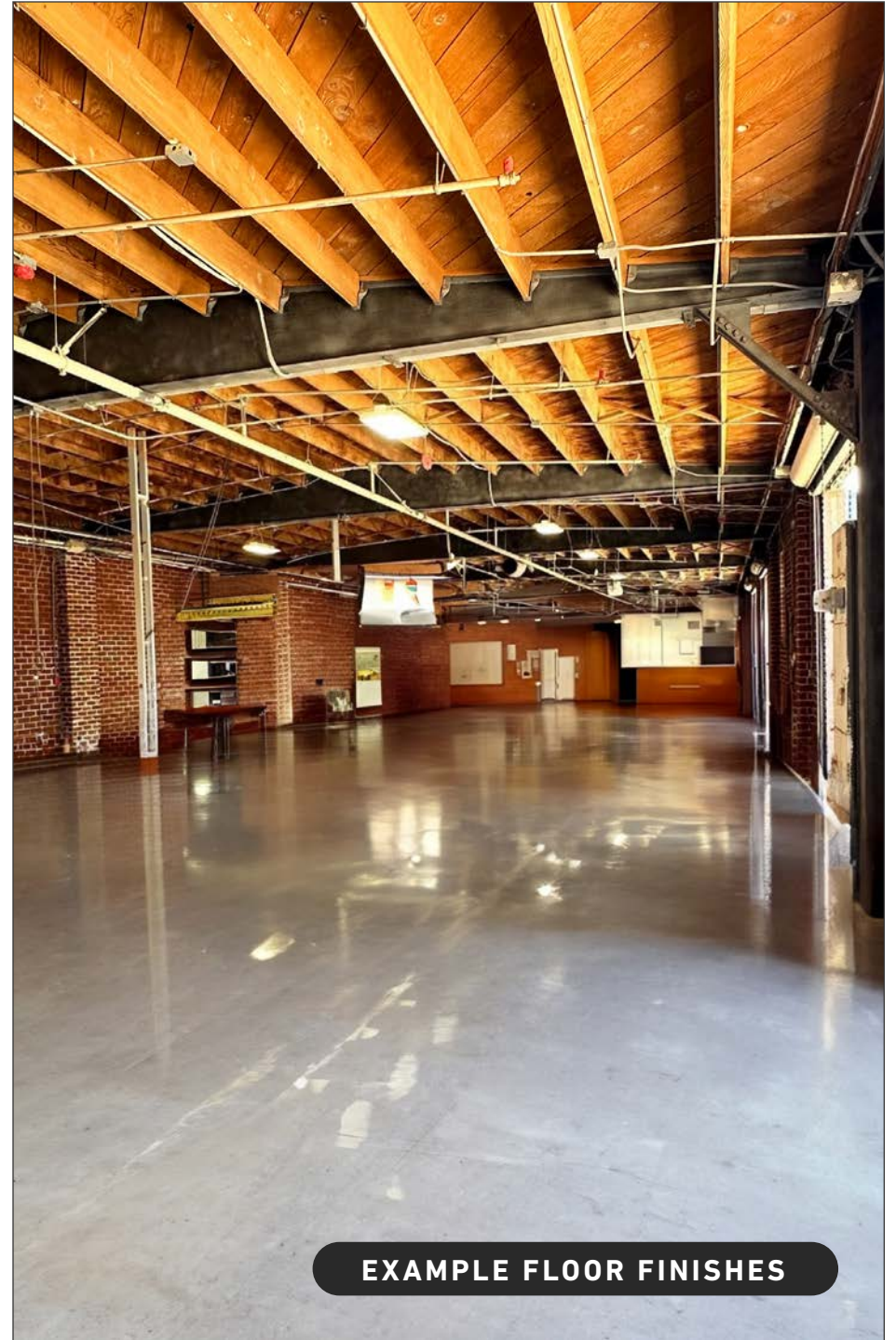
\$2.25/SF, MG

## TERM

3 - 5 Years

## ZONING

MU-C



**EXAMPLE FLOOR FINISHES**



**EXAMPLE FLOOR FINISHES**

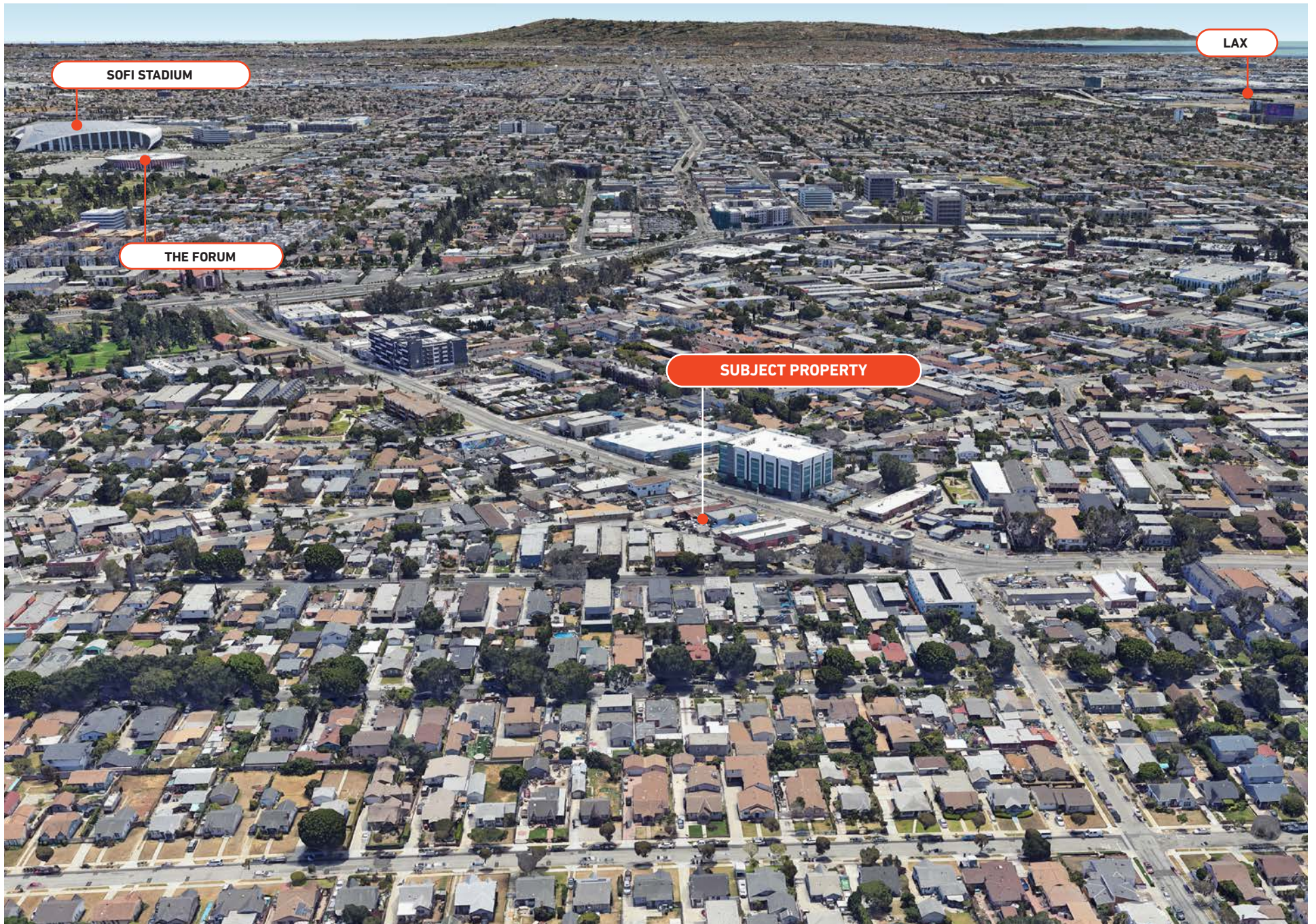


**RECENTLY RENOVATED INTERIOR**



**FOR LEASE**

# AREA OVERVIEW



# CONTACTS

**DYLAN MAHOOD, CCIM**

310.899.2706  
dmahood@leewestla.com  
AGT DRE 02027002

**BRAD MCCOY**

310.899.2730  
bmccoy@leewestla.com  
BKR DRE 01938098

**CONOR HALLORAN**

310.899.2724  
challoran@leewestla.com  
AGT DRE 02085970

**Lee & Associates Los Angeles West, Inc.**  
1508 17th Street, Santa Monica, CA 90404  
www.leewestla.com | DRE 01222000



A DIVISION OF



**LEE &  
ASSOCIATES**