

THE PETROLEUM BUILDING

710 - 714 W. OLYMPIC BLVD | LOS ANGELES 90015

2,000 - 20,000 SF OFFICES IN HISTORIC CORE



710 - 714 W OLYMPIC BOULEVARD



A DIVISION OF



LEE &
ASSOCIATES

PROPERTY INFORMATION



AVAILABLE SUITES

200: ±3,682 SF

203: ± 2,511SF

205: ± 5,025 SF

400: ± 7,139 -
21,087 SF

500: ± 20,531 SF

800: ± 6,477 SF

801: ± 4,837 SF



24-HOUR SECURITY/ DOORMAN



CONTACTS

Aleks Trifunovic, SIOR
310.899.2721
atrifunovic@leewestla.com
BKR DRE 01363109

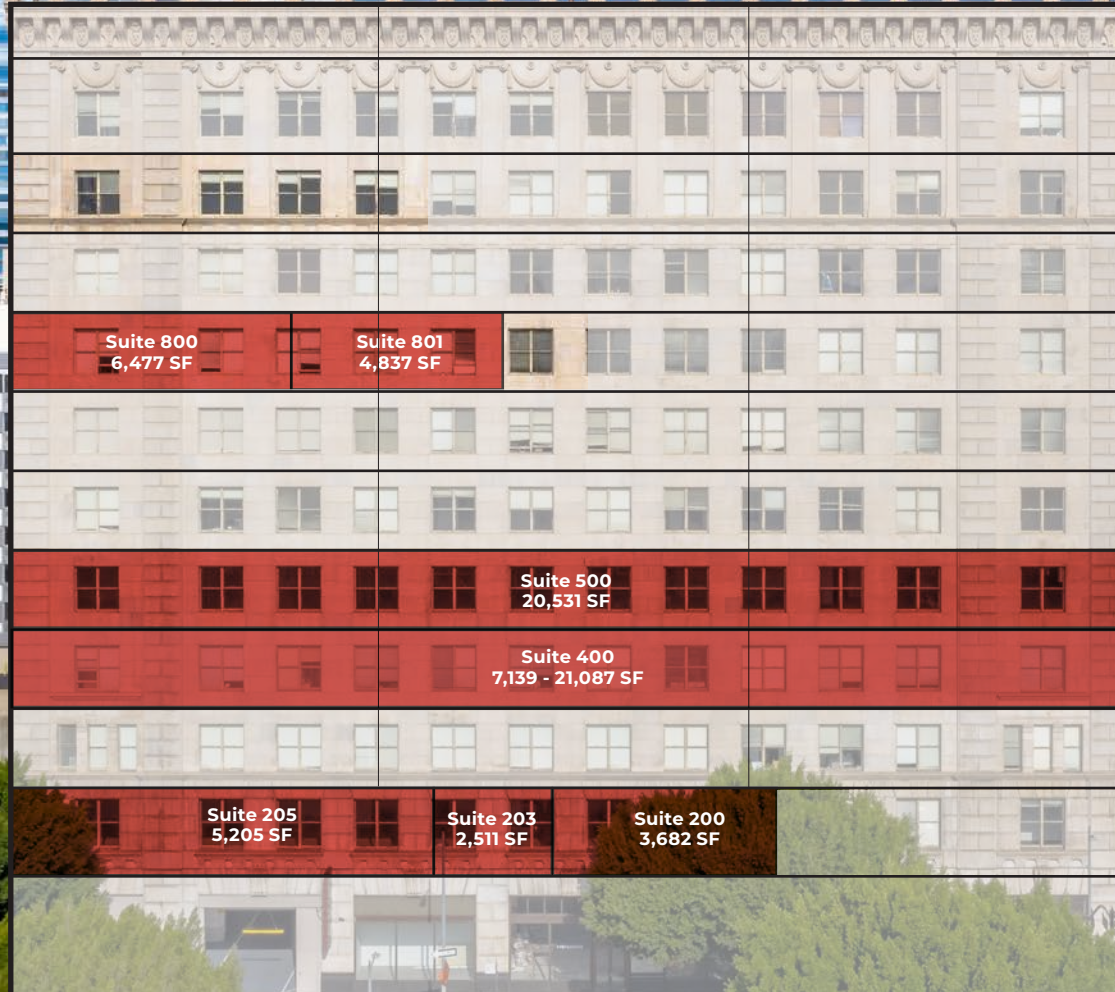
Adam Levine
310.899.2703
alevine@leewestla.com
AGT DRE 02104830

Serge Sarkissian
310.899.2739
ssarkissian@leewestla.com
AGT DRE 01929449

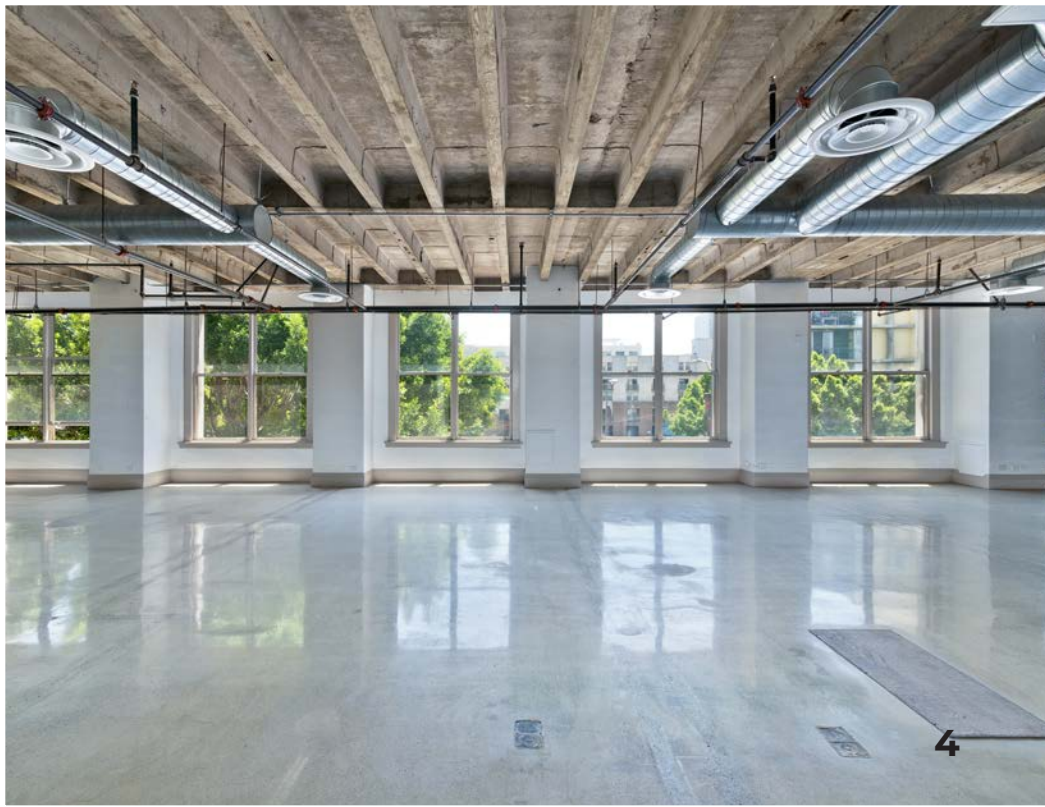
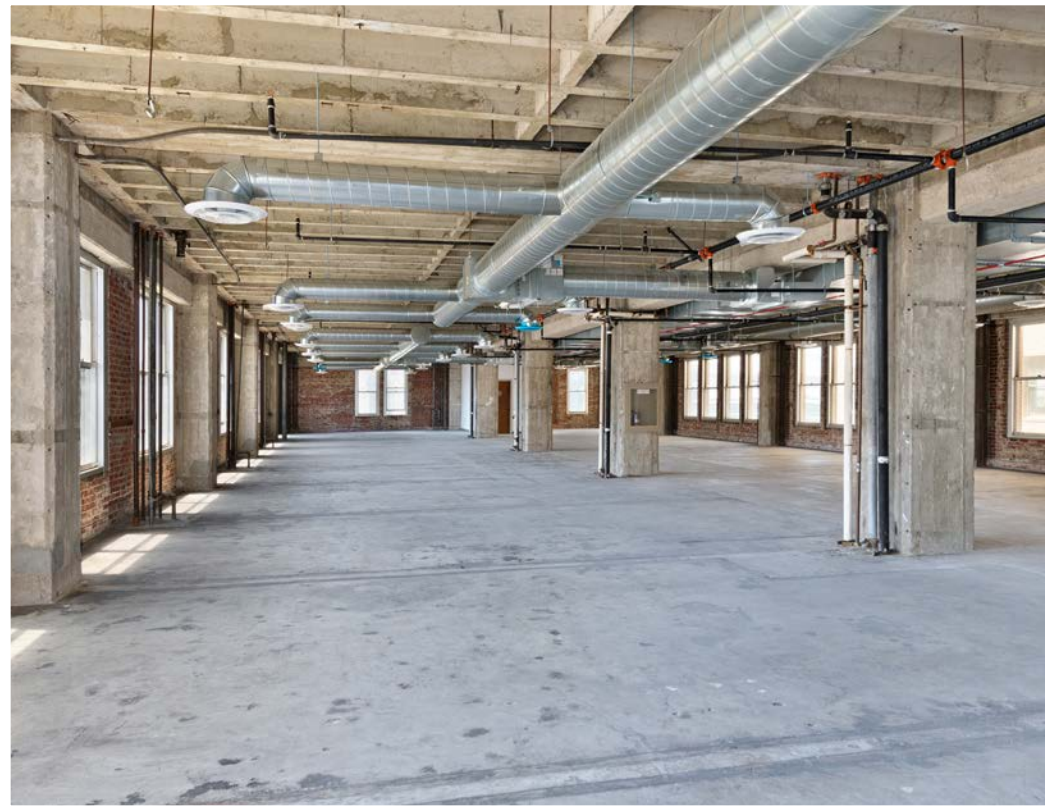
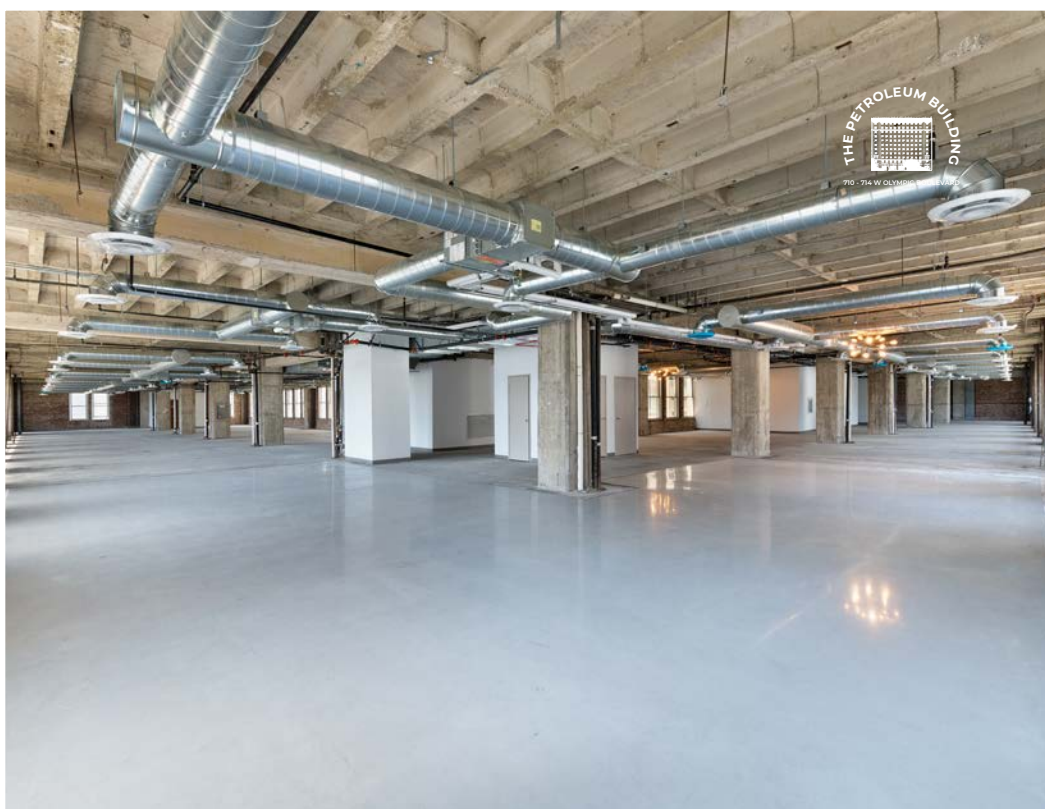
Tommy Isola
310.899.2709
tisola@leewestla.com
AGT DRE 01974024



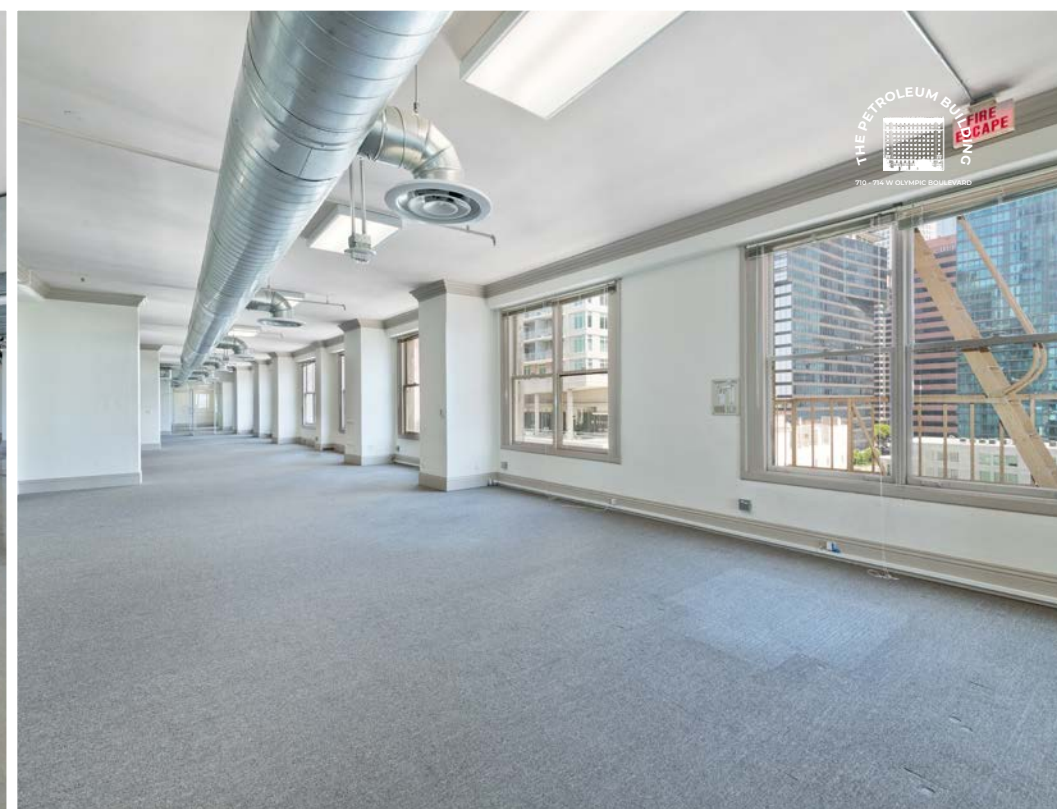
TENANT LOUNGE/ SHARED CONFERENCE ROOM



INTERIOR PHOTOS

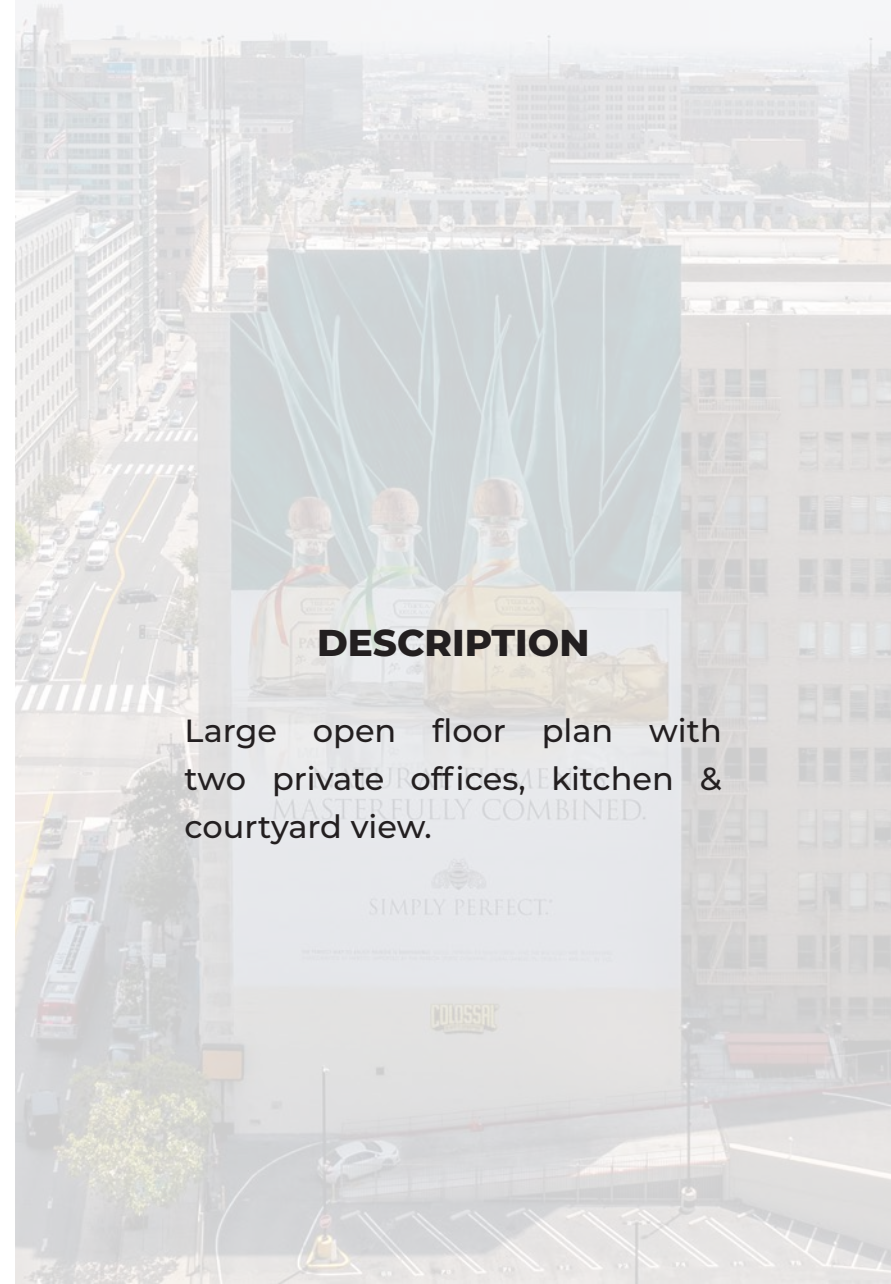


INTERIOR PHOTOS





SUITE 203 | ± 2,511 SF



DESCRIPTION

Large open floor plan with two private offices, kitchen & courtyard view.

SIMPLY PERFECT.

COLOSSAL

SUITE 205 | ±5.205 SF



DESCRIPTION

This open floor plan suite is lined with grand operable windows, beautifully polished concrete floors, high ceilings & five private offices with courtyard views. The space is also kitchen prepped for buildout.



TOTAL SF: 21,807 SF

SUITE 402
10,424.60 SF

SUITE 400
7,249.50 SF



SUITE 401
4,132.90 SF

SUITE 400 | ±21,807 SF

DESCRIPTION

Full floor or divisible, fully built-out second generation office space with private kitchen and bathroom. Layout is divisible and flexible to whatever a tenant would need. Each office has its own exterior window.

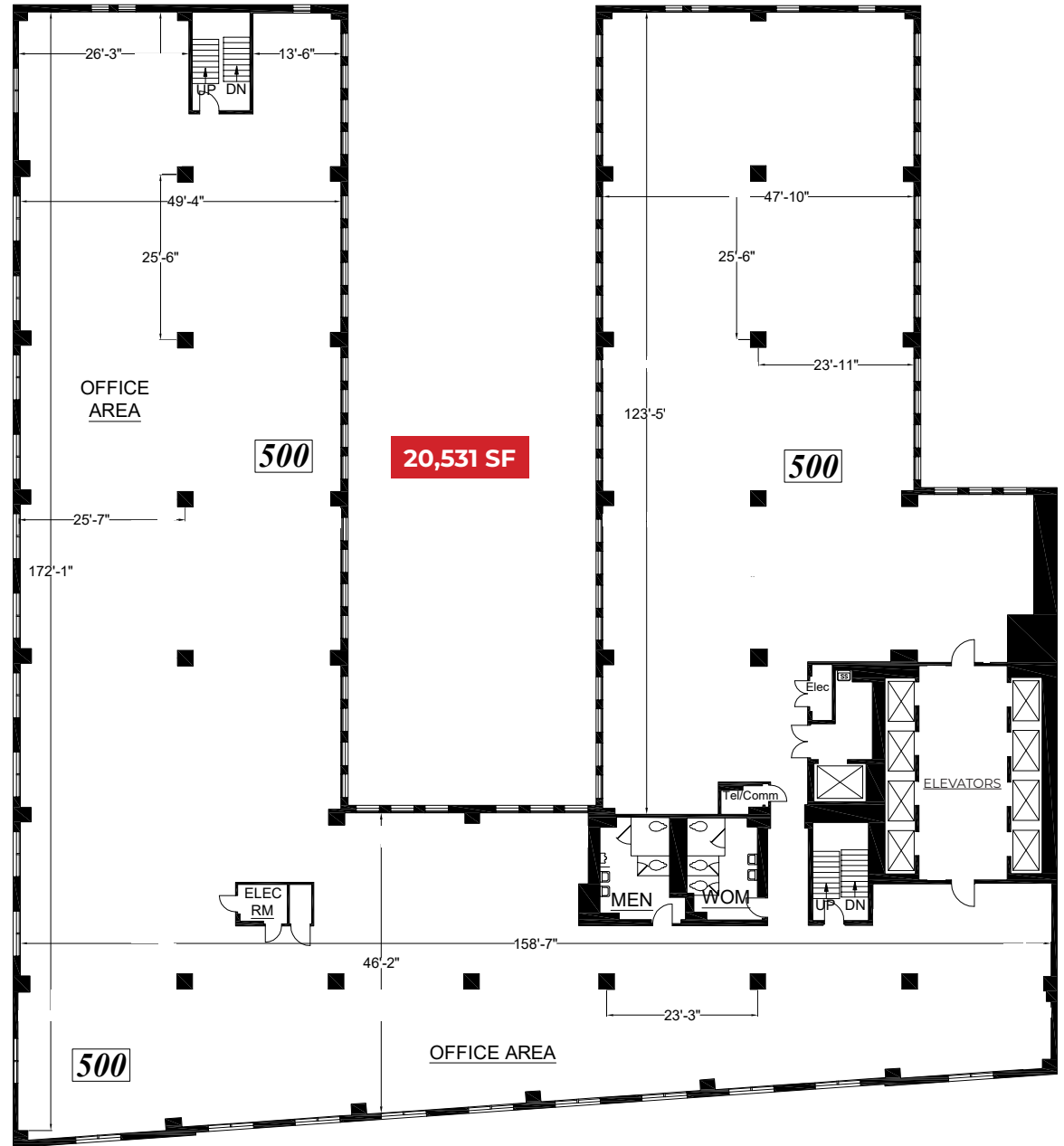


SUITE 500 | ± 20,531 SF



DESCRIPTION

Full floor suite with panoramic views, red brick walls, concrete floors, high open ceiling & kitchens ready. Tenant has the opportunity to design their own layout.





SUITE 800 | ±6,477 SF



FELIX CHEVROLET
1921-2021

DESCRIPTION

This suite consists of a large open work area, three private offices, a large conference room and is kitchen ready with concrete floors, high open ceilings & lots of large operable windows.

SUITE 801 | ± 4,837 SF



DESCRIPTION

This suite is a completely open floor plan with one conference room. The space lays out perfectly for offices to be built-out along the window line.



AMENITIES MAP

LA LIVE

- | | |
|---------------------|-----------------|
| SMASHBURGER | KATSUYA |
| YARD HOUSE | PATXI'S PIZZA |
| TOM'S WATCH BAR | FLEMING'S PRIME |
| FIXINS SOUL KITCHEN | SAVOCA |
| WOLFGANG PUCK | STARBUCKS |
| SOL AGAVE | BOCA |



REGAL LA
LIVE & 4DX

JW
MARRIOT

BENIHIBACHI

VERANDA
AL FRESCO

CAFE FIG

FAITH &
FLOWER

RITZ CARLTON

STARBUCKS

PANINI
KABOB GRILL

MR. MASALA

MICROSOFT
THEATER

CANA
RUM BAR

BACHI YAKI

CRYPTO.COM
ARENA

EL CHOLO

SONORITAS

THE PALM

GENWA KBBQ

ARASHI SUSHI

PRANK BAR

BOSSA NOVA

NIMBUS
COFFEE

ALADDIN
COFFEE SHOP

LA CONVENTION
CENTER

HIDEF BREWING

STARBUCKS

NEARBY ENTERTAINMENT

OCEANWIDE HOTEL DEVELOPMENT

RITZ CARLTON

LA CONVENTION CENTER

MARRIOTT HOTEL

CRYPTO.COM ARENA

MICROSOFT ARENA

LA LIVE
NOVO
ESPN ZONE
GRAMMY MUSEUM

REGAL LA LIVE & 4DX





Aleks Trifunovic, SIOR
President
310.899.2721
atrifunovic@leewestla.com
BKR DRE 01363109

Serge Sarkissian
Vice President
310.899.2739
ssarkissian@leewestla.com
AGT DRE 01929449

Adam Levine
Associate
310.899.2703
alevine@leewestla.com
AGT DRE 02104830

Tommy Isola
Principal
310.899.2709
tisola@leewestla.com
AGT DRE 01974024

Lee & Associates Los Angeles West, Inc.
1508 17th Street, Santa Monica, CA
310.899.2700 | www.leewestla.com | DRE 01222000

No warranty or representation is made to the accuracy of the foregoing information.