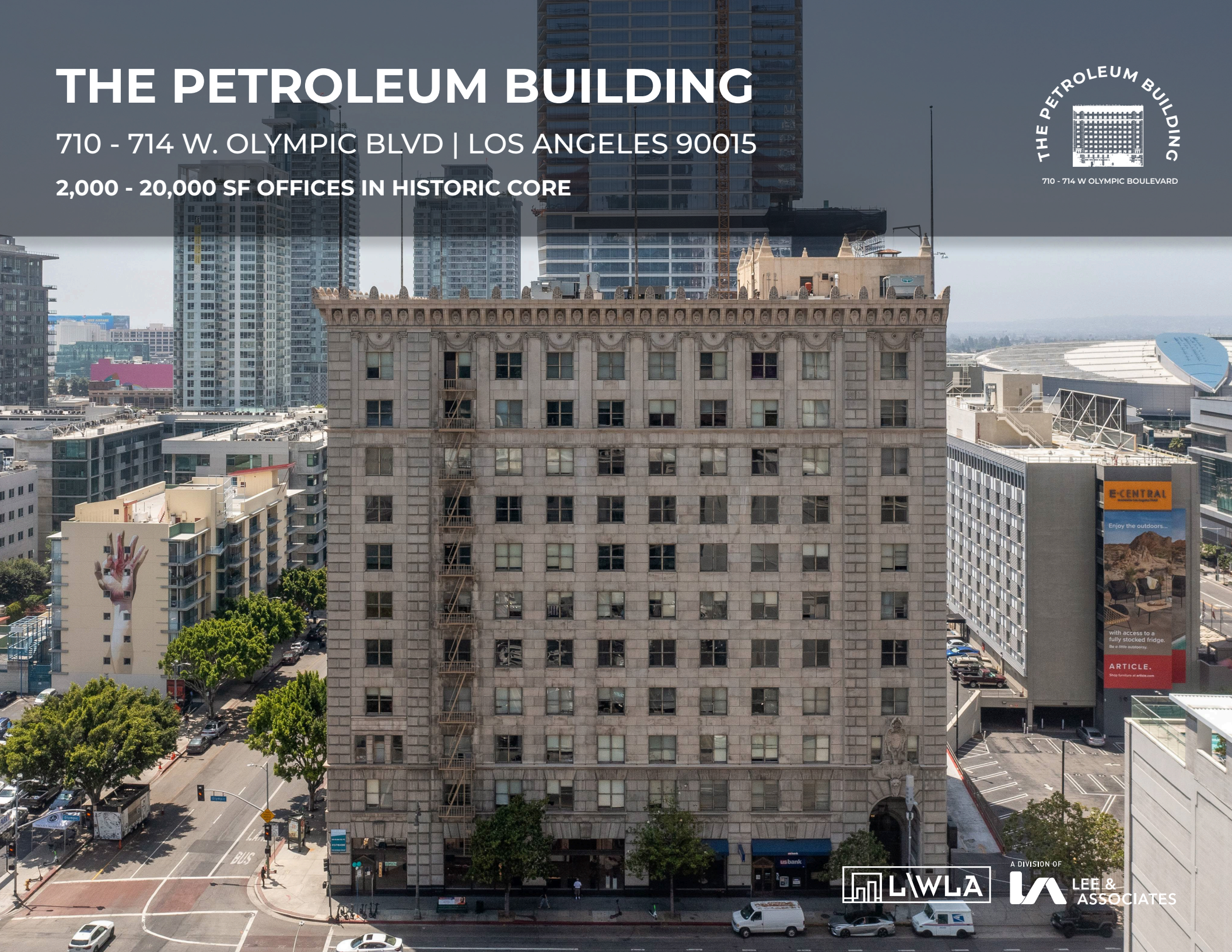


# THE PETROLEUM BUILDING

710 - 714 W. OLYMPIC BLVD | LOS ANGELES 90015

2,000 - 20,000 SF OFFICES IN HISTORIC CORE





## PROPERTY INFORMATION

THE PETROLEUM BUILDING  
710 - 714 W OLYMPIC BOULEVARD



### AVAILABLE SUITES

200: ±3,682 SF 800: ± 6,477 SF

203: ± 2,511SF 801: ± 4,837 SF

205: ± 5,025 SF

400: ± 7,139 -  
21,087 SF

500: ± 20,531 SF



### 24-HOUR SECURITY/ DOORMAN



### TENANT LOUNGE/ SHARED CONFERENCE ROOM



### CONTACTS

Adam Levine  
310.899.2703  
alevine@leewestla.com  
AGT DRE 02104830

Aleks Trifunovic, SIOR  
310.899.2721  
atrifunovic@leewestla.com  
BKR DRE 01363109

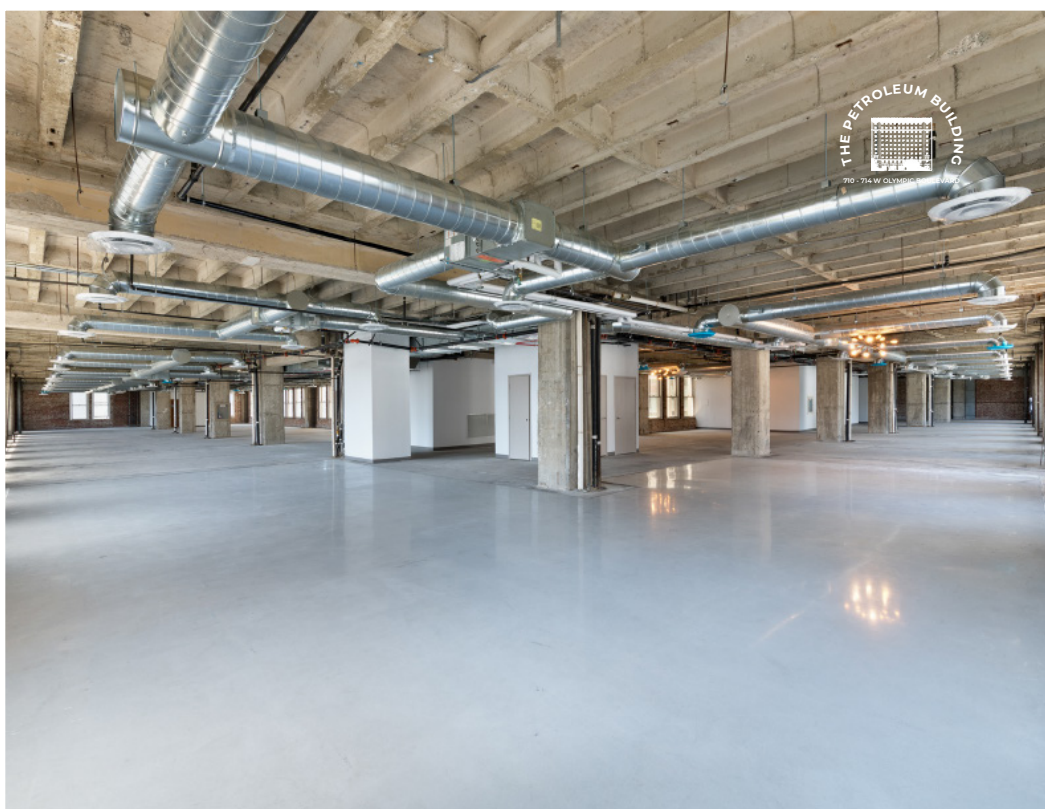
Tommy Isola  
310.899.2709  
tisola@leewestla.com  
AGT DRE 01974024





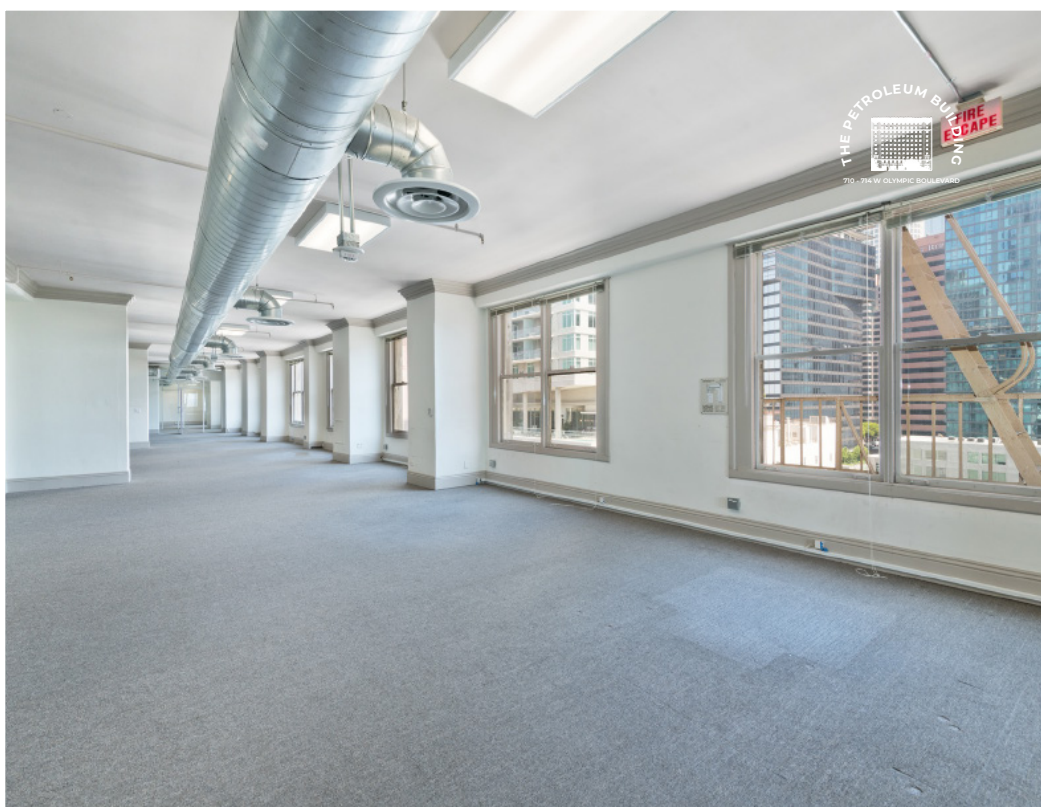


## INTERIOR PHOTOS





## INTERIOR PHOTOS

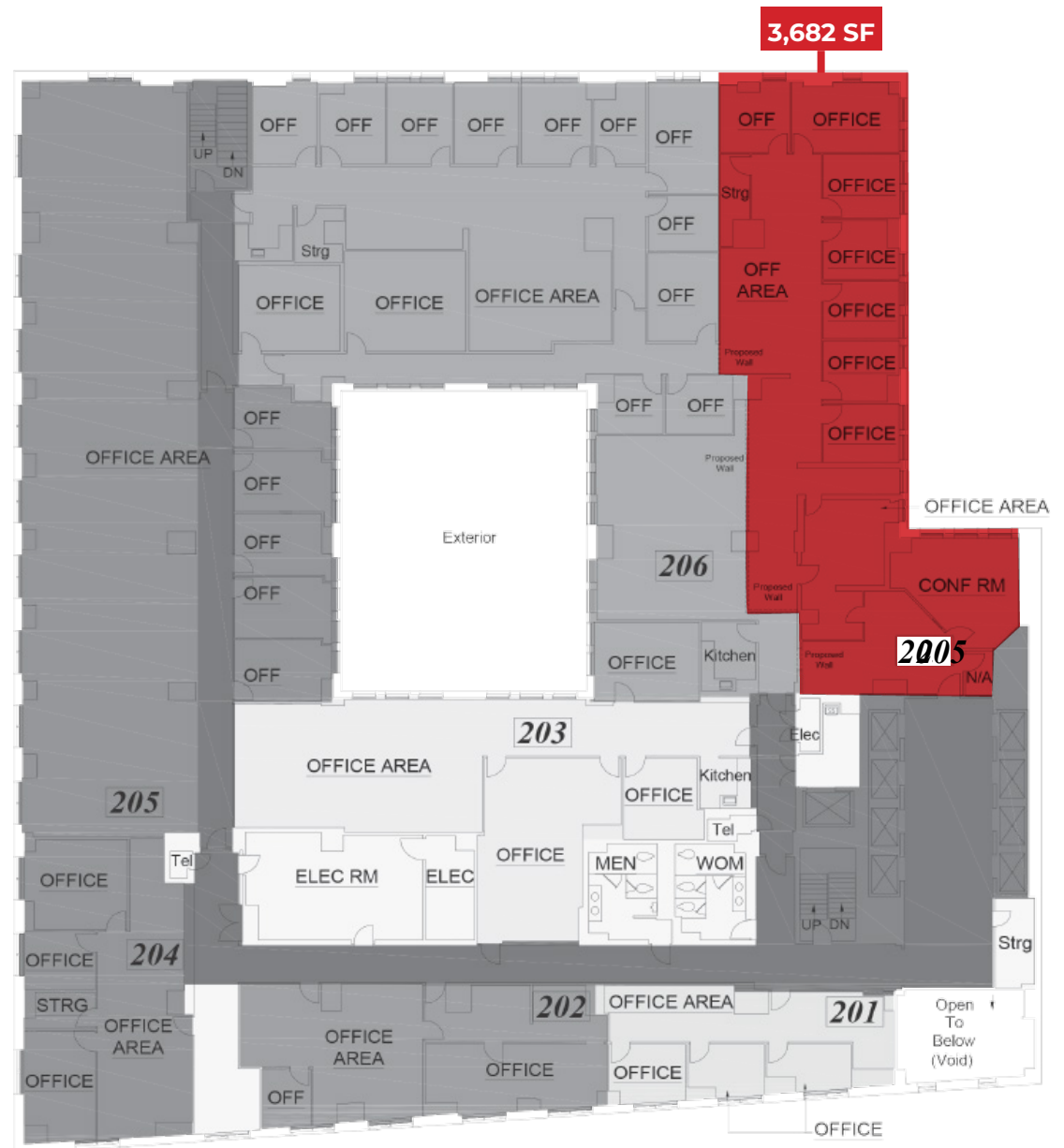




## SUITE 200 | ± 3,682 SF

### DESCRIPTION

Spacious open floor plan with nine window offices several of which are corners. Suite includes a designated receptionist area, two kitchens, telecom & storage area.







SUITE 203 | ± 2,511 SF

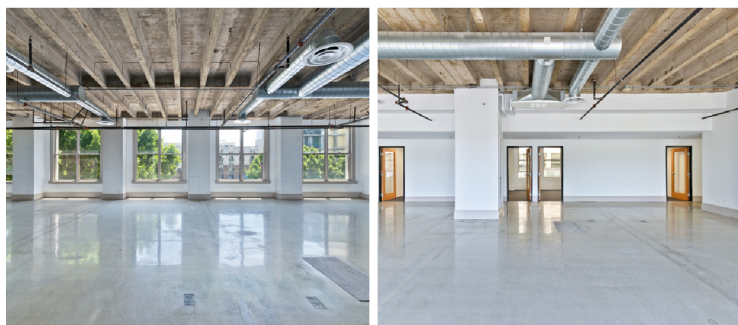
## DESCRIPTION

Large open floor plan with two private offices, kitchen & courtyard view.



THE PETROLEUM BUILDING

710 - 714 W. OLYMPIC BOULEVARD



This open floor plan suite is lined with grand operable windows, beautifully polished concrete floors, high ceilings & five private offices with courtyard views. The space is also kitchen prepped for buildout.





**TOTAL SF: 21,807 SF**

**SUITE 402  
10,424.60 SF**

**SUITE 400  
7,249.50 SF**

**SUITE 401  
4,132.90 SF**

**SUITE 400 | ±21,807 SF**

## DESCRIPTION

Full floor or divisible, fully built-out second generation office space with private kitchen and bathroom. Layout is divisible and flexible to whatever a tenant would need. Each office has its own exterior window.

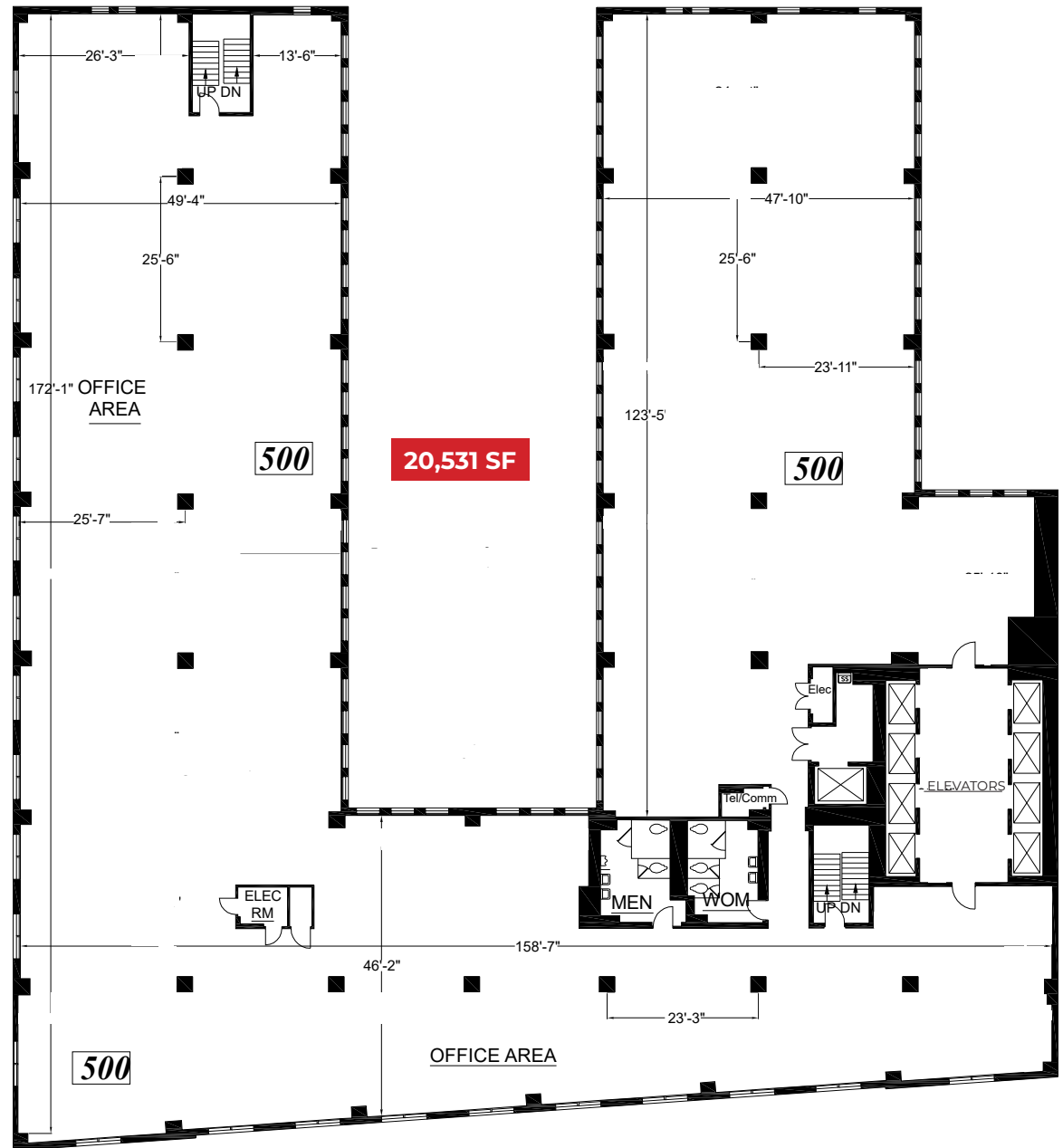


## SUITE 500 | ± 20,531 SF

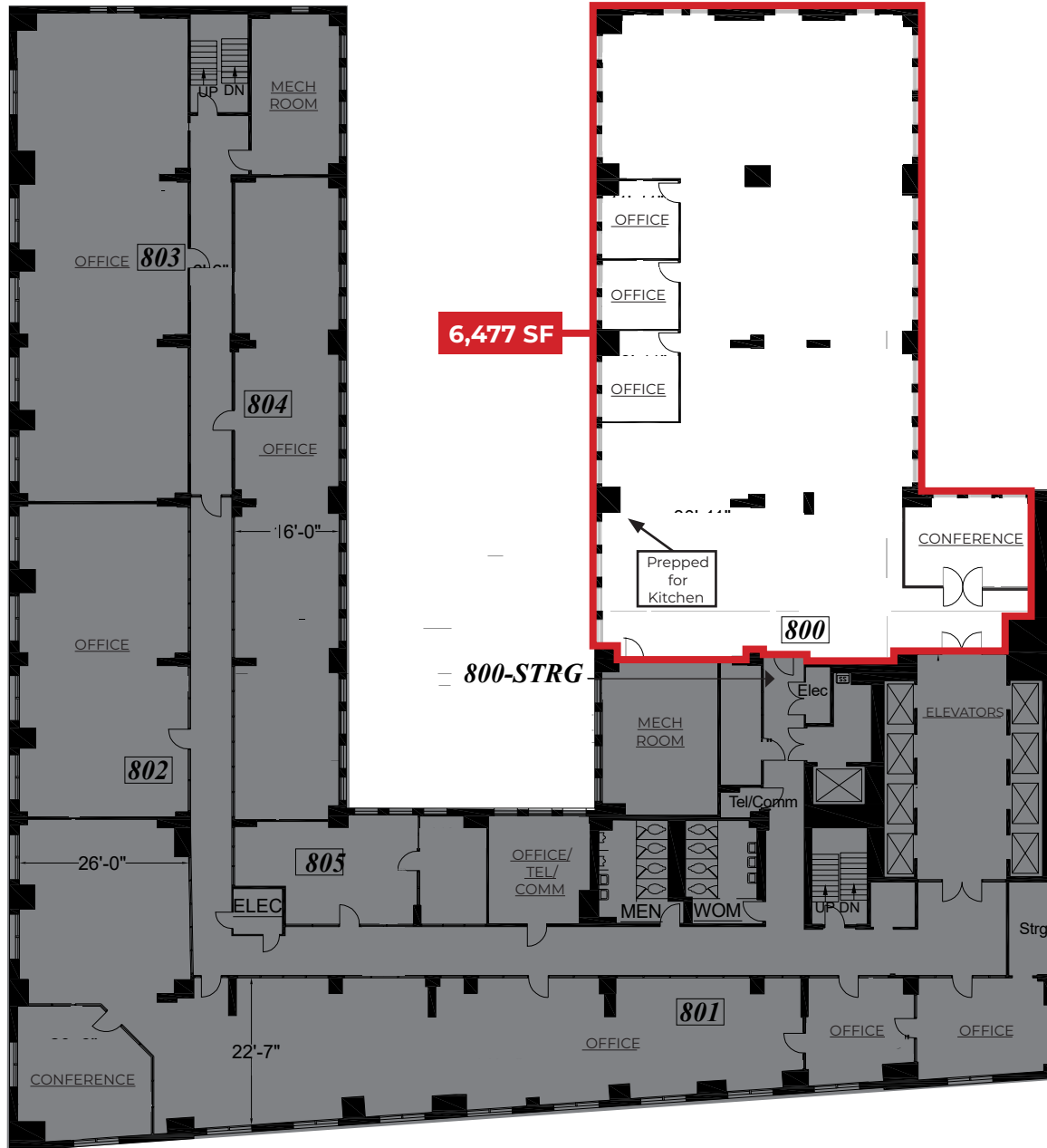


### DESCRIPTION

Full floor suite with panoramic views, red brick walls, concrete floors, high open ceiling & kitchens ready. Tenant has the opportunity to design their own layout.







## SUITE 800 | ±6,477 SF



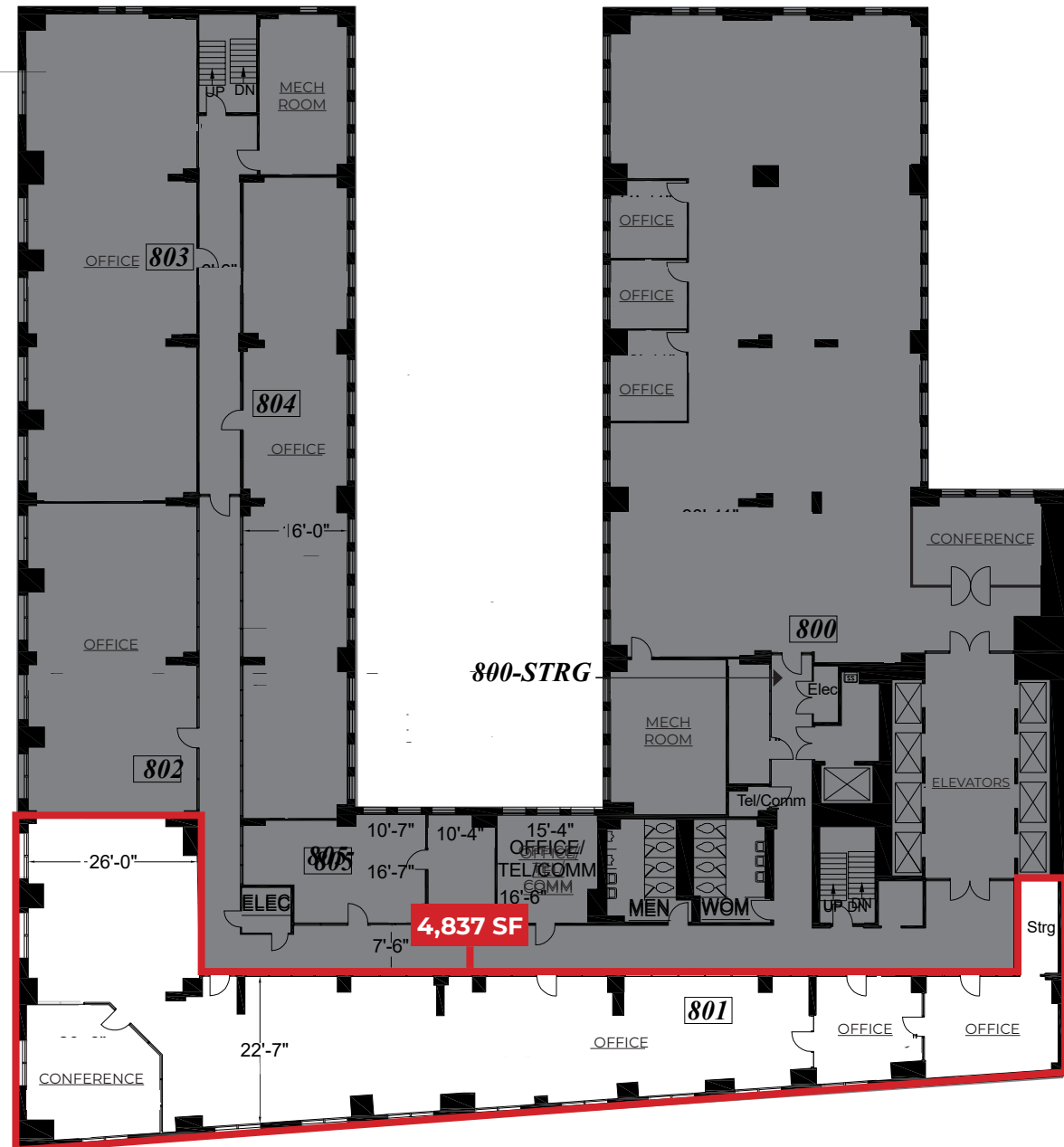
### DESCRIPTION

This suite consists of a large open work area, three private offices, a large conference room and is kitchen ready with concrete floors, high open ceilings & lots of large operable windows.





This suite is a completely open floor plan with one conference room. The space lays out perfectly for offices to be built-out along the window line.







# AMENITIES MAP

## LA LIVE

- |                     |                 |
|---------------------|-----------------|
| SMASHBURGER         | KATSUYA         |
| YARD HOUSE          | PATXI'S PIZZA   |
| TOM'S WATCH BAR     | FLEMING'S PRIME |
| FIXINS SOUL KITCHEN | SAVOCA          |
| WOLFGANG PUCK       | STARBUCKS       |
| SOL AGAVE           | BOCA            |

- REGAL LA LIVE & 4DX
- JW MARRIOTT
- RITZ CARLTON
- VERANDA AL FRESCO
- BENIHIBACHI
- CAFE FIG
- STARBUCKS
- FAITH & FLOWER
- PANINI KABOB GRILL
- MR. MASALA
- CANA RUM BAR
- BACHI YAKI
- MICROSOFT THEATER
- CRYPTO.COM ARENA
- EL CHOLO
- SONORITAS
- GENWA KBBQ
- PRANK BAR
- BOSSA NOVA
- THE PALM
- ARASHI SUSHI
- NIMBUS COFFEE
- ALADDIN COFFEE SHOP
- HIDEF BREWING
- STARBUCKS
- LA CONVENTION CENTER



## NEARBY ENTERTAINMENT

OCEANWIDE  
HOTEL  
DEVELOPMENT

LA CONVENTION  
CENTER

CRYPTO.COM  
ARENA

MICROSOFT  
ARENA

LA LIVE  
NOVO  
ESPN ZONE  
GRAMMY MUSEUM

RITZ  
CARLTON

MARRIOTT  
HOTEL

REGAL LA  
LIVE & 4DX





**Aleks Trifunovic, SIOR**  
President 310.899.2721  
atrifunovic@leewestla.com  
BKR DRE 01363109

**Adam Levine**  
Associate 310.899.2703  
alevine@leewestla.com  
AGT DRE 02104830

**Tommy Isola**  
Principal  
310.899.2709  
tisola@leewestla.com  
AGT DRE 01974024

Lee & Associates Los Angeles West, Inc.  
1508 17th Street, Santa Monica, CA  
310.899.2700 | [www.leewestla.com](http://www.leewestla.com) | DRE 01222000

No warranty or representation is made to the accuracy of the foregoing information.