

± 7,075 SF Culver City Flex Space for Lease



www.leewestla.com | dre# 01222000

**5770 HANNUM AVENUE
CULVER CITY, CA 90230**

PREMISES ± 7,075 SF
RENT \$2.85/SF, NNN (net 0.45/SF)
TERM 3 - 10 Years
OCCUPANCY March 1, 2024
PARKING 2/1,000 Included

- FEATURES
- Warehouse with 17' Clear Height
 - Ideal Flex Floorplan with Warehouse
 - Kitchen
 - One Grade Level Roll-Up Door
 - Central Location

CONTACT

Keith Fielding
310.899.2719
kfielding@leewestla.com
AGT DRE 01729915

Aleks Trifunovic, SIOR
310.899.2721
atrifunovic@leewestla.com
BKR DRE 01363109

Tibor Lody, SIOR
310.899.2720
tlody@leewestla.com
AGT DRE 01261129

Tommy Isola
310.899.2709
tisola@leewestla.com
AGT DRE 01974024



A DIVISION OF



1508 17th Street, Santa Monica, CA 90404
310.899.2700 | www.leewestla.com | dre 01222000

No warranty or representation is made to the accuracy of the foregoing information.
Terms of sale or lease are subject to change or withdrawal without notice.







FLOOR PLAN

Keith Fielding
310.899.2719
kfielding@leewestla.com
AGT DRE 01729915

Tibor Lody, SIOR
310.899.2720
tlody@leewestla.com
AGT DRE 01261129

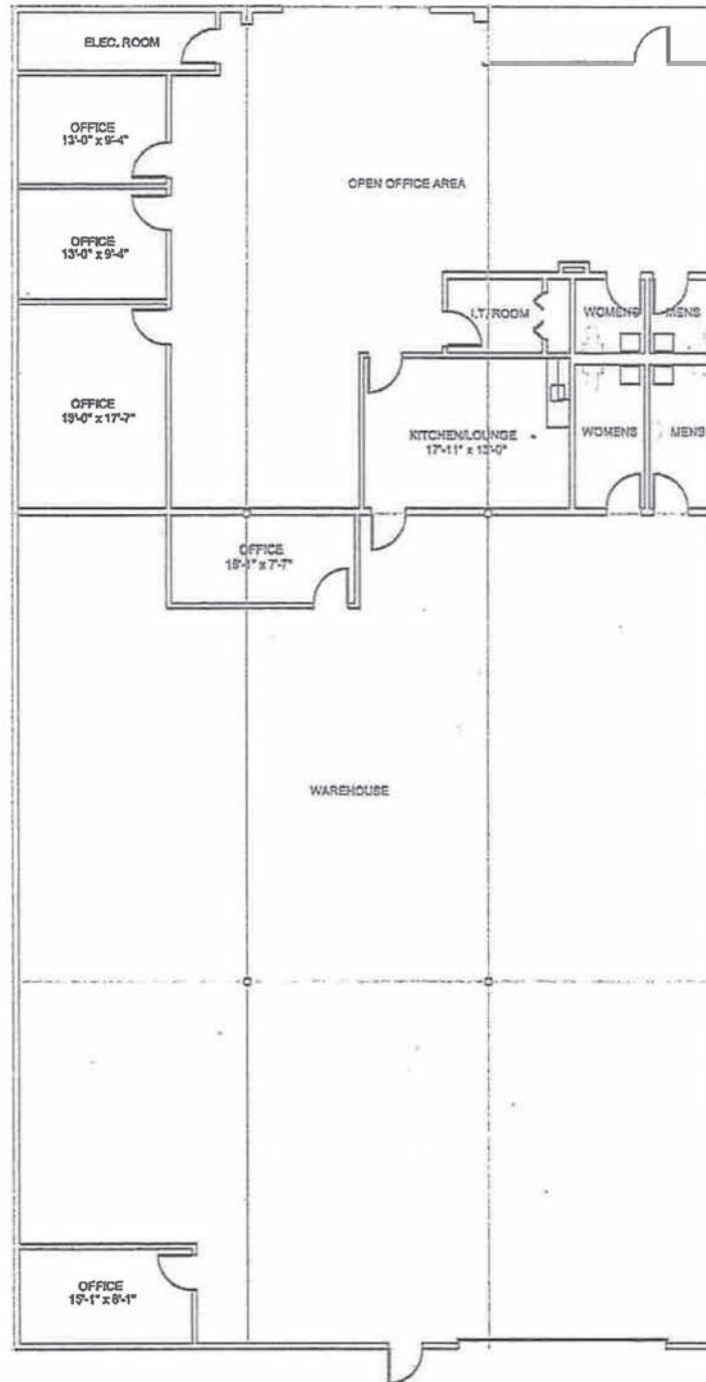
Aleks Trifunovic, SIOR
310.899.2721
atrifunovic@leewestla.com
BKR DRE 01363109

Tommy Isola
310.899.2709
tisola@leewestla.com
AGT DRE 01974024

Adam Levine
310.899.2703
alevine@leewestla.com
AGT DRE 02104830



A DIVISION OF





VENICE

MARINA DEL REY

PLAYA VISTA

WESTFIELD MALL



HANNUM AVE

W SLAUSON AVE



Keith Fielding
310.899.2719
kfelding@leewestla.com
AGT DRE 01729915

Tibor Lody, SIOR
310.899.2720
tlody@leewestla.com
AGT DRE 01261129

Aleks Trifunovic, SIOR
310.899.2721
atrifunovic@leewestla.com
BKR DRE 01363109

Tommy Isola
310.899.2709
tisola@leewestla.com
AGT DRE 01974024

Adam Levine
310.899.2703
alevine@leewestla.com
AGT DRE 02104830