

# 12248 Santa Monica Boulevard

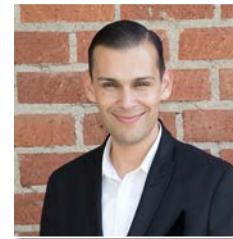




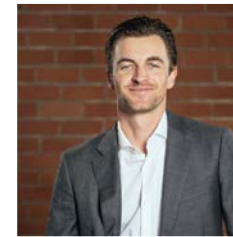
The architects A. Quincy Jones and Fred Emmons built this building for their growing practice in 1954, adding the two story front wing in 1958. Jones and Emmons had one of the most important Mid-Century California practices, with hundreds of iconic homes throughout the state, including the nearby Crestwood Hills development in Brentwood, major campus buildings such as the Annenberg School of Communications and Journalism at USC and the Charles E. Young Research Library at UCLA, and the great Annenberg estate, Sunnylands, in Rancho Mirage. The Jones and Emmons office building is recognized as a Los Angeles Cultural Heritage Landmark and an outstanding example of Mid-Century courtyard architecture with its emphasis on daylight and views, connection to nature, and expressed wood construction.

<b>PREMISES</b>	Suite 200 - ± 2,600 SF
<b>RATE</b>	\$2.50 FSG
<b>AVAILABLE</b>	March 2024
<b>PARKING</b>	Available on street or next door. Reserved @ \$180, Unreserved @ \$150. Up to 6 spaces
<b>FEATURES</b>	<ul style="list-style-type: none"><li>- Separate suite entrance</li><li>- Two private restrooms</li><li>- Open work environment</li><li>- Conference/Meeting area</li><li>- Exposed frame and woodwork</li><li>- Natural light</li></ul>

#### CONTACT

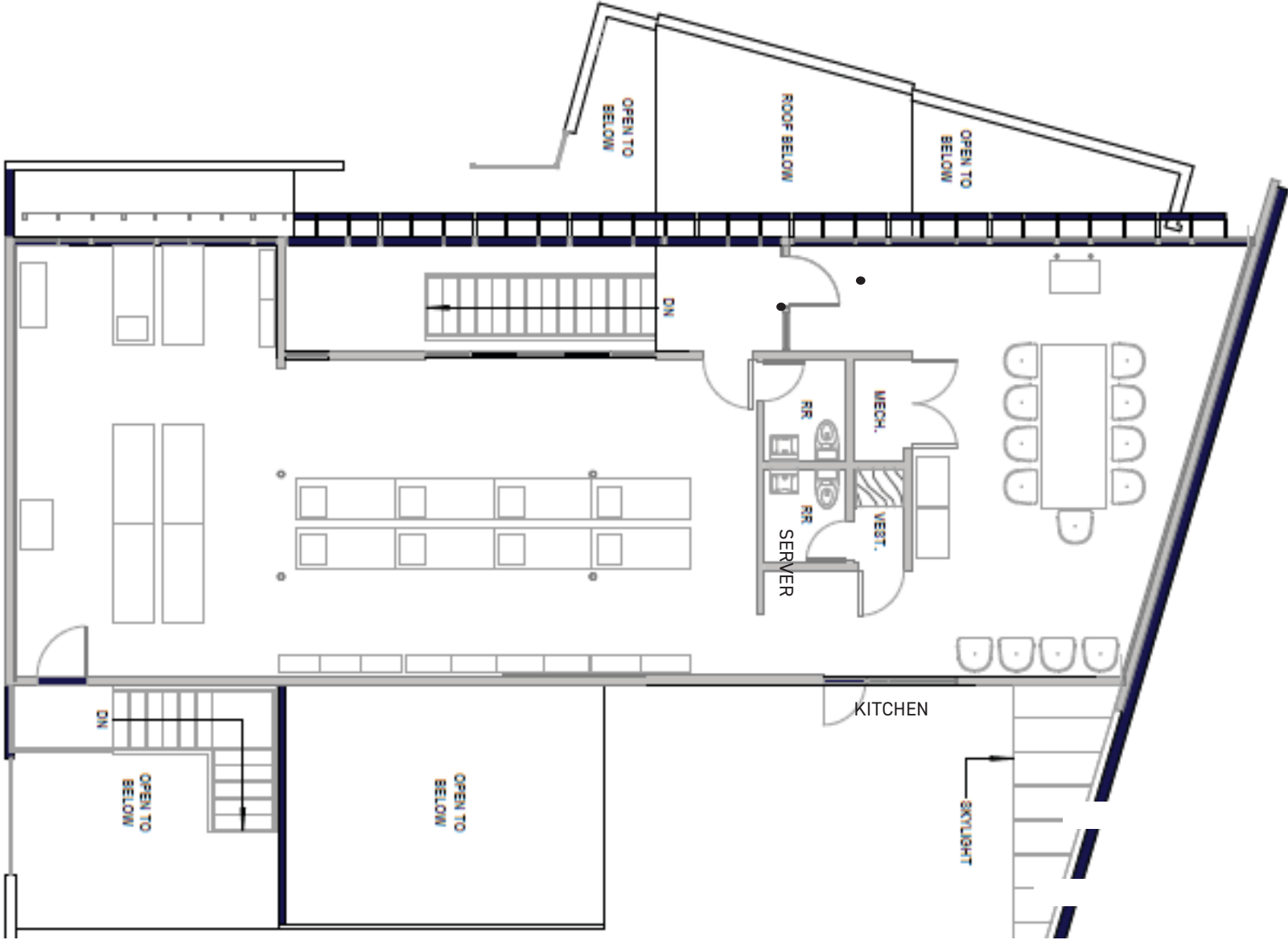


**Alex Rivera**  
310.899.2742  
arivera@leewestla.com  
BKR DRE 01328712



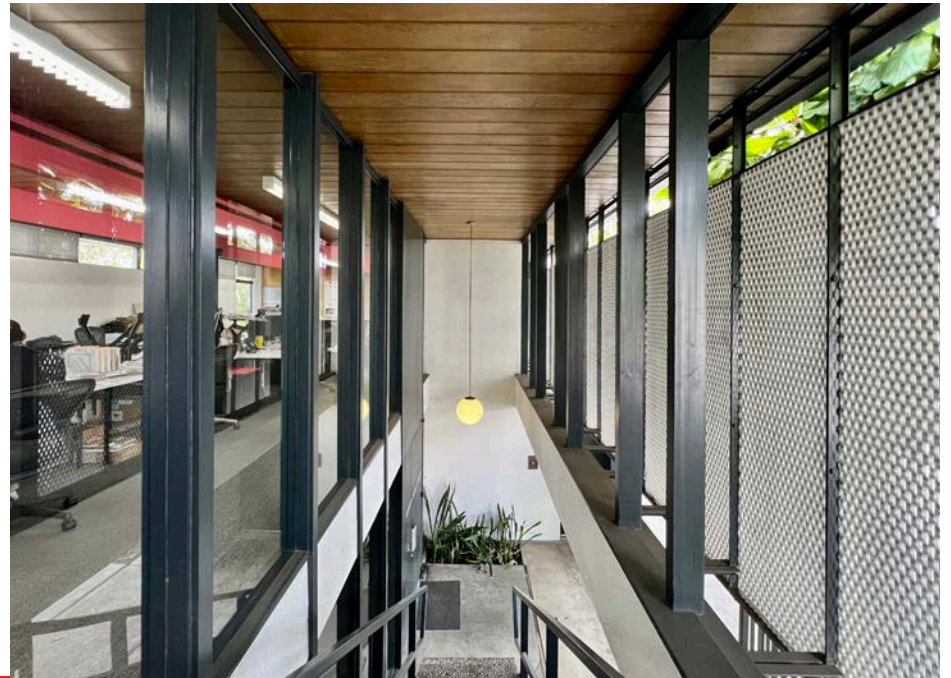
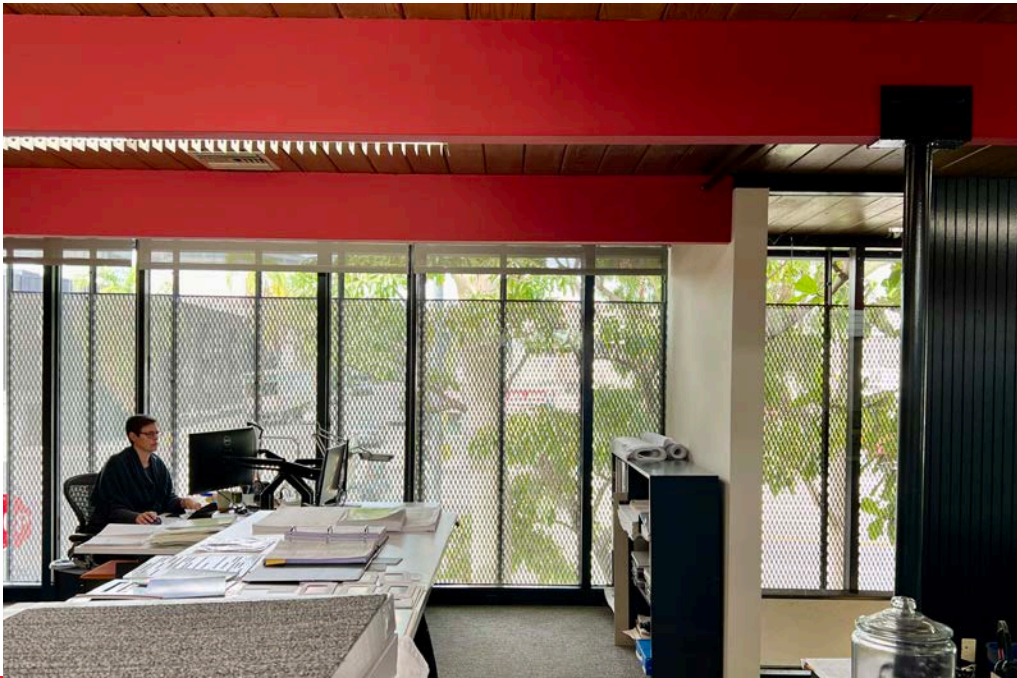
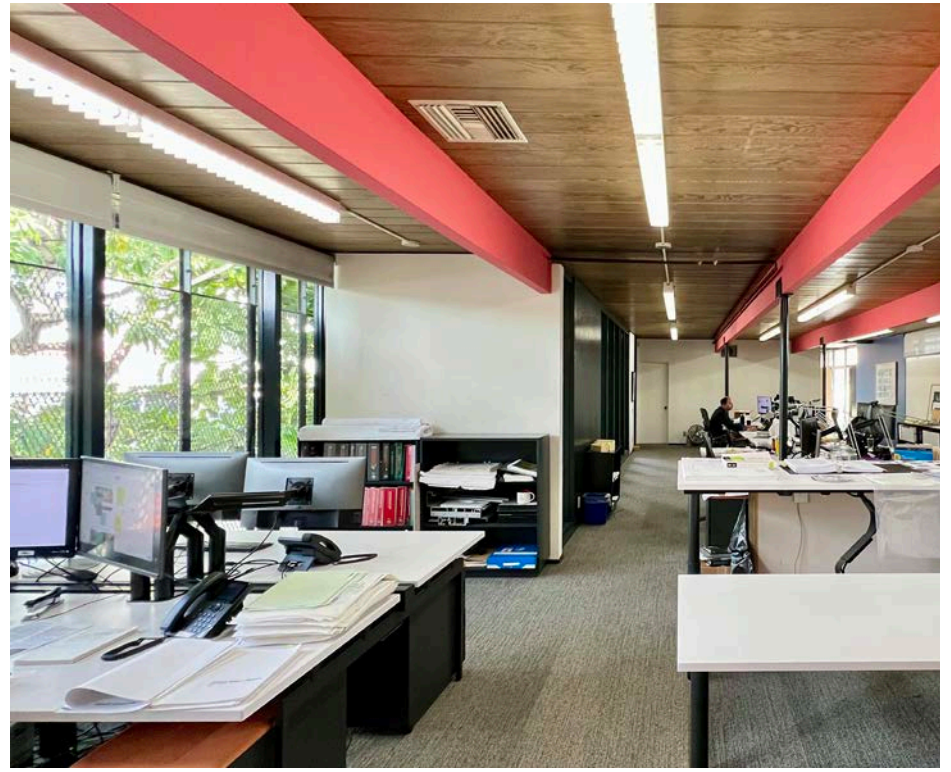
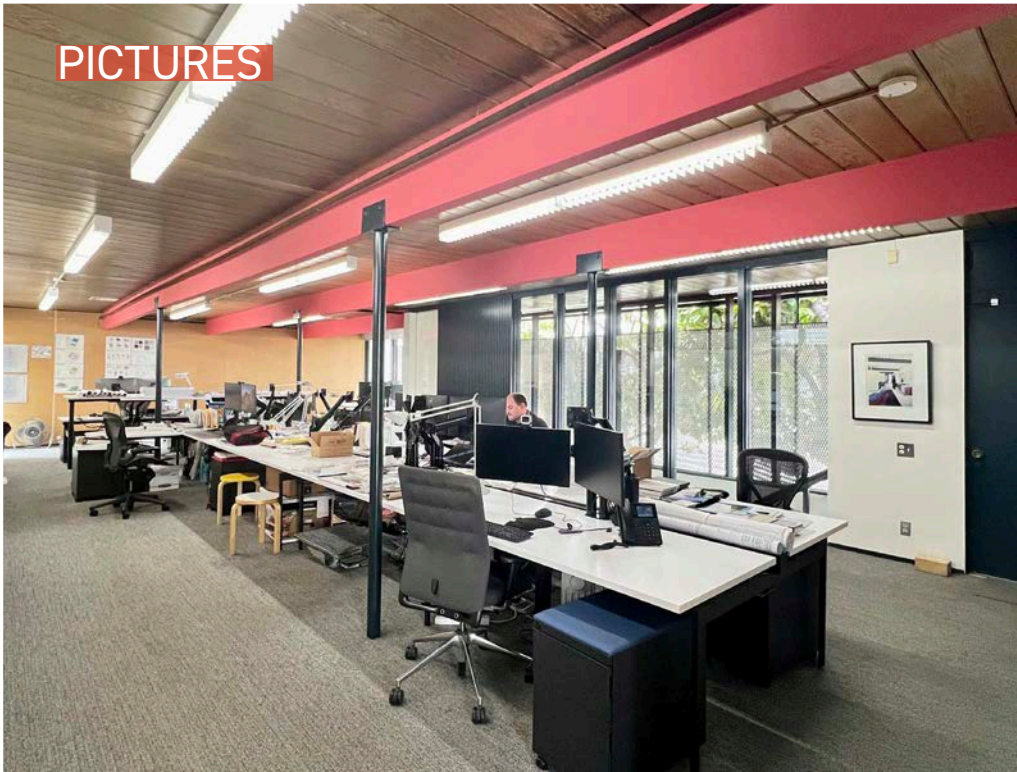
**Gage Danley**  
310.899.2749  
gdanley@leewestla.com  
BKR DRE 02075191

# FLOOR PLAN



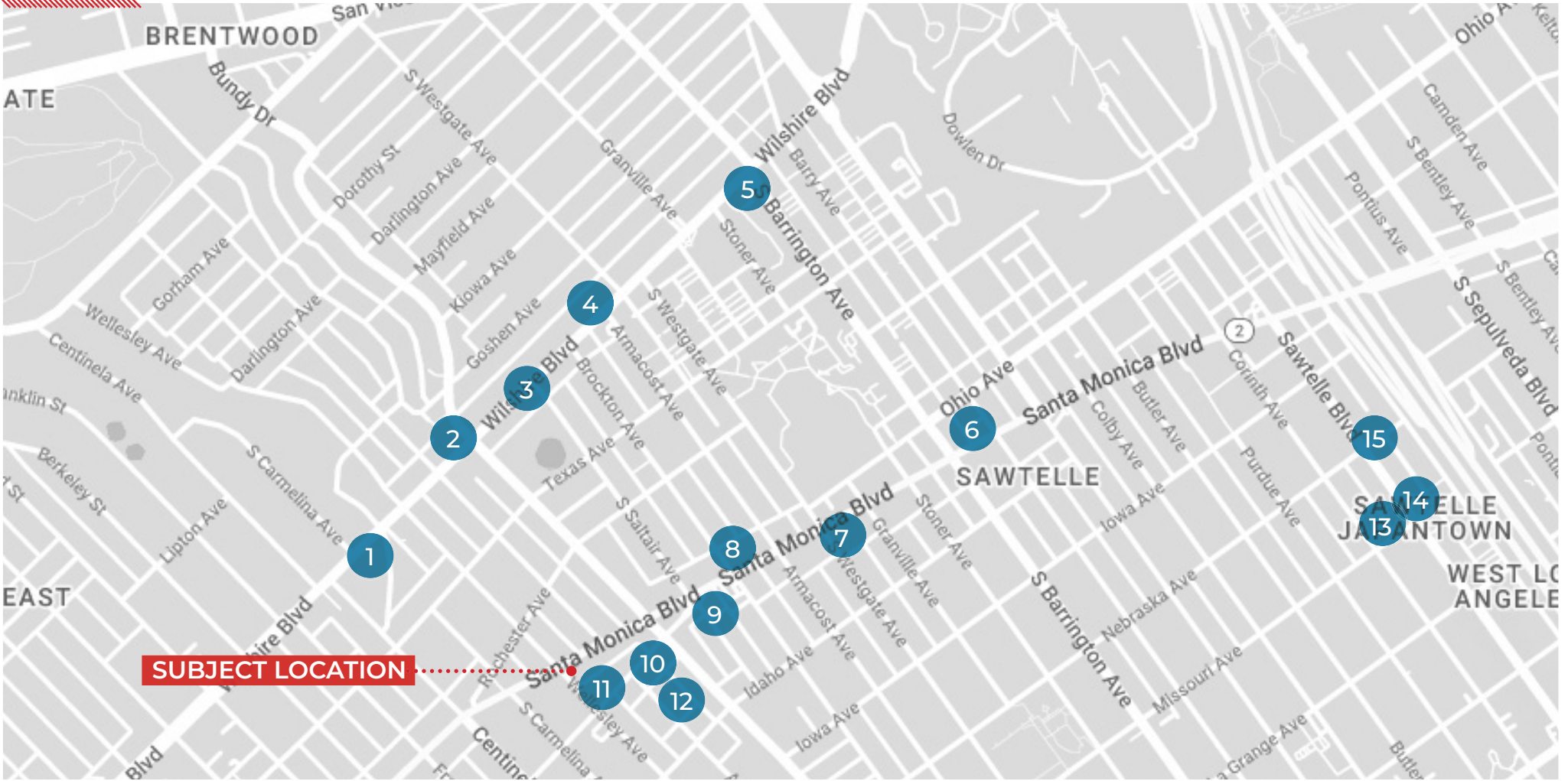


PICTURES





# AMENITY MAP



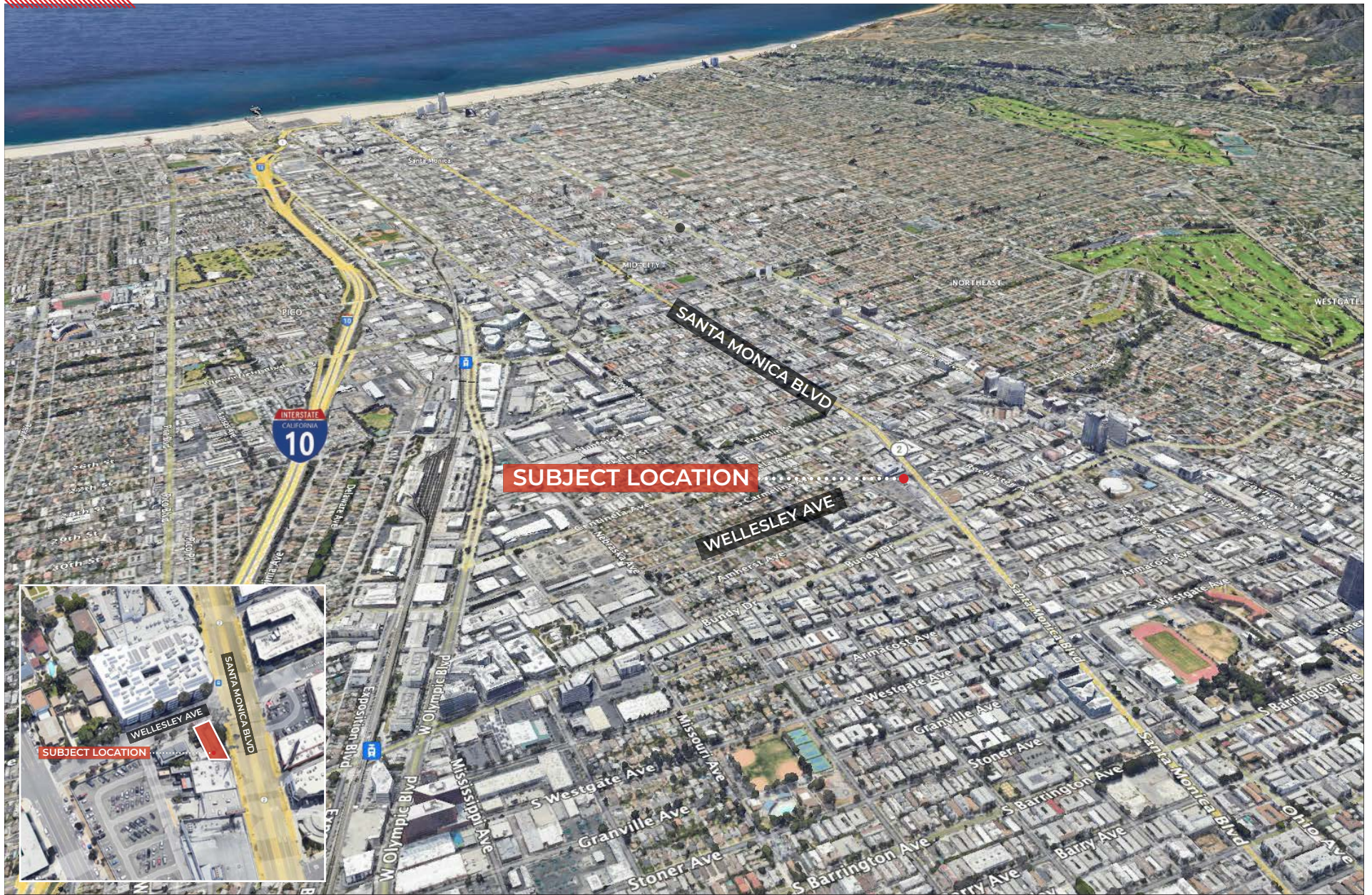
- 1. Blu Jam Cafe
- 2. Vienna Pastry
- 3. Lady Chocolatt
- 4. Sushi Sasabune
- 5. Wood Ranch

- 6. Cafe 50's
- 7. Target
- 8. Board House Coffee
- 9. Guido's
- 10. Starbucks

- 11. Smart & Final
- 12. Taco Plus
- 13. LA Prime Caffe
- 14. Chitchat Coffee + Matcha
- 15. Plan Check



# LOCATION MAP





# CONTACT



**Alex Rivera**  
310.899.2742  
arivera@leewestla.com  
BKR DRE 01328712



**Gage Danley**  
310.899.2749  
gdanley@leewestla.com  
BKR DRE 02075191

310.899.2700 | WWW.LEEWESTLA.COM | DRE 01222000

No warranty or representation is made to the accuracy of the foregoing information.  
Terms of sale or lease are subject to change or withdrawal without notice.

