

1335 4th Street
Santa Monica





1335 4th Street Santa Monica

- Prime Retail / Fitness Studio in the Heart of Downtown Santa Monica
- Signage Available
- Steps from Third Street Promenade
- Easy Access to Santa Monica 10-FWY & PCH
- Building Common Areas Recently Renovated in 2018
- Private Secure Access Off Of 4th Street
- Plug and Play For Fitness And Yoga Studio Uses



No warranty or representation is made to the accuracy of the foregoing information. Terms of sale or lease are subject to change or withdrawal without notice.

PREMISES

± 3,000 SF
(Entire Ground Floor)

RENT

\$4.00/SF, MG

OCCUPANCY

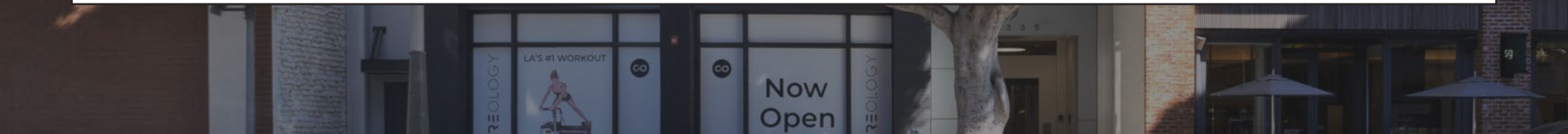
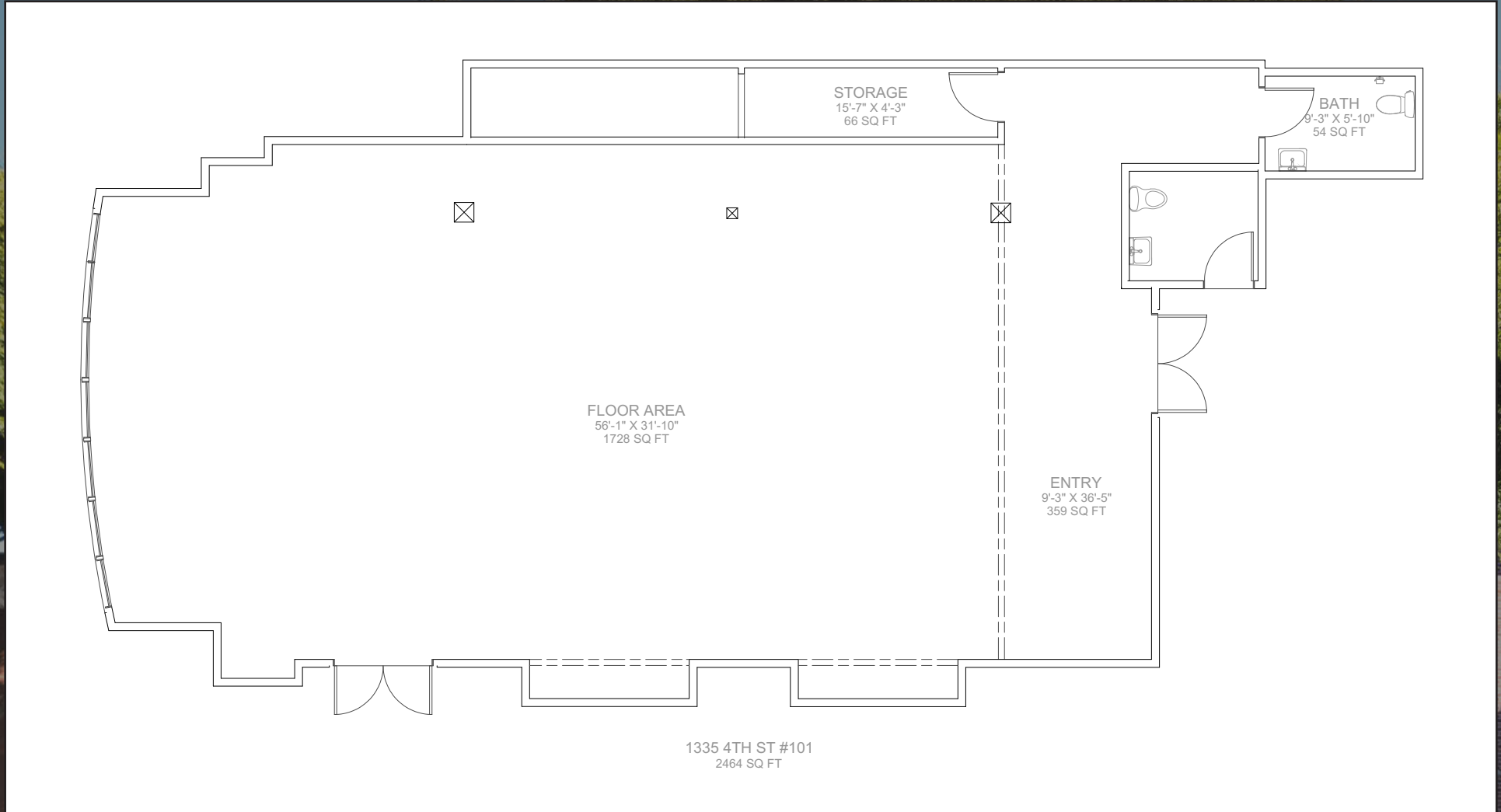
August 2024

TERM

3 - 5+ Years

PARKING

4 Spaces
\$210/Space/Month





FINE DINING

- 1 Fig
- 2 Michaels
- 3 Orto
- 4 UOVO
- 5 Water Grill

CASUAL EATS

- 6 Bay Cities Italian Deli & Bakery
- 7 Santa Monica Proper
- 8 Cassia
- 9 Chipotle
- 10 Del Frisco's Grille
- 11 Elephante
- 12 Flower Child
- 13 Ivy at the Shore
- 14 Massilia
- 15 Meat on Ocean
- 16 Tu Madre
- 17 Philz Coffee
- 18 Starbucks
- 19 Steak 'n Shake

- 20 Sugarfish
- 21 Tar & Roses
- 22 Tender Greens
- 23 The Bungalow
- 24 The Misfit
- 25 Umami Burger

FITNESS

- 26 Equinox
- 27 Orangetheory Fitness
- 28 SoulCycle
- 29 Coreology
- 30 Burn Fitness

31 3RD ST. PROMENADE

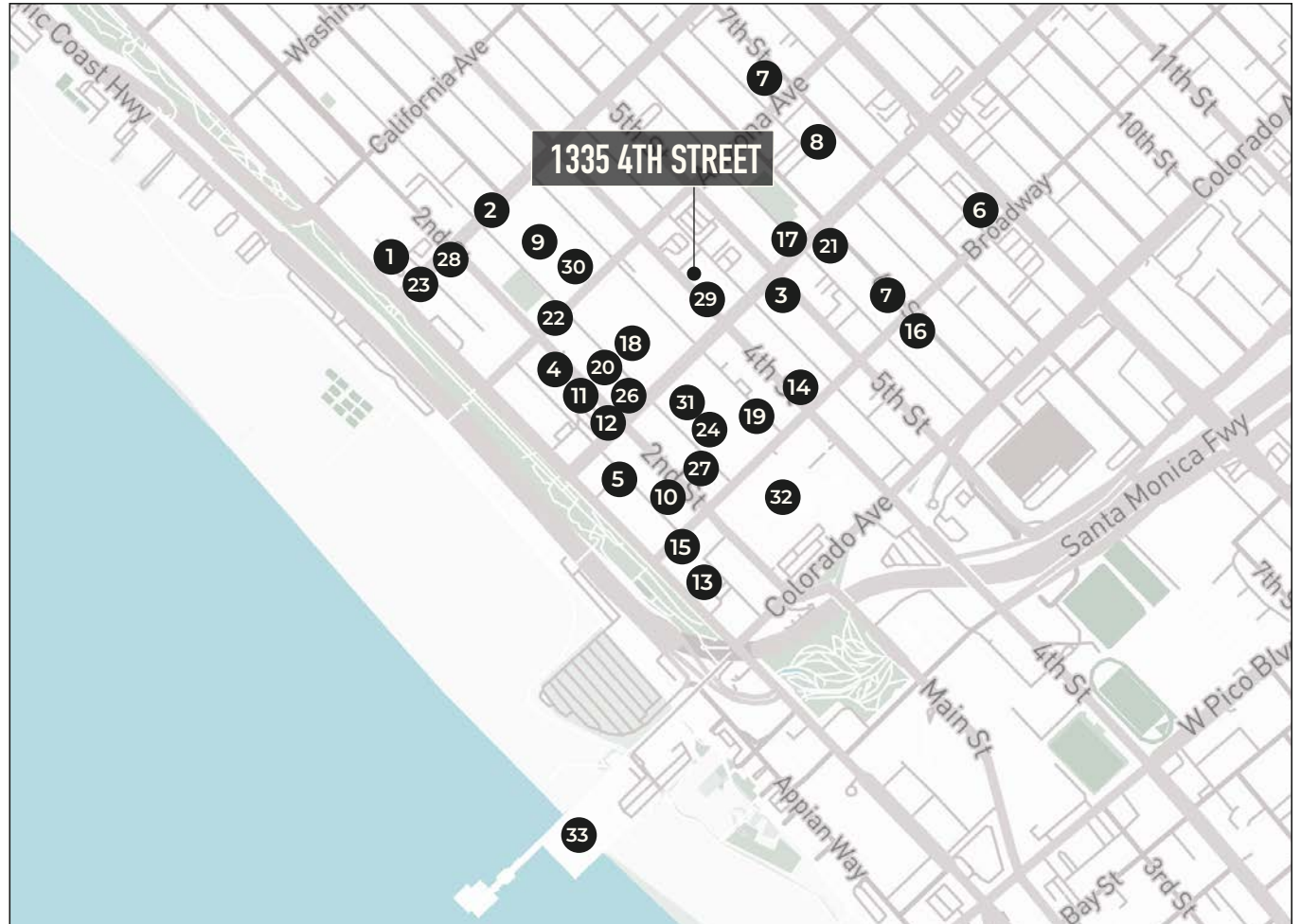
- Apple
- Lululemon
- Alo
- Sephora
- Anthropologie

32 SANTA MONICA PLACE

- Tesla
- Nordstrom
- Nike
- Louis Vuitton
- Peloton

33 SANTA MONICA PIER

- The Albright
- Rusty's Surf Ranch
- Seasidee on the Pier
- Maria Sol
- Coffee Bean & Tea Leaf



GEORGE WILSON

310.899.2738
gwilson@leewestla.com
AGT DRE 02090678

DAVID WILSON

310.899.2707
dwilson@leewestla.com
AGT DRE 00822760

BRAD MCCOY

310.899.2730
bmccoy@leewestla.com
BKR DRE 01938098

LINDSAY SHUFORD

310.899.2710
lshuford@leewestla.com
AGT DRE 02231518

Lee & Associates Los Angeles West, Inc.
1508 17th Street, Santa Monica, CA 90404
www.leewestla.com | DRE 01222000

