

For Sale!

518 - 520
SANTA MONICA BLVD

SANTA MONICA
CENTRAL BUSINESS
DISTRICT



A DIVISION OF





TABLE OF CONTENTS

03

EXECUTIVE SUMMARY

07

SALE AND LEASE
COMPARABLES

09

PROPERTY OVERVIEW

14

MARKET OVERVIEW

518 - 520
SANTA
MONICA
BLVD

EXECUTIVE
YOGS SUMMARY

VIRTUAL REALITY

The left window displays two posters for HyperGateVR. The left poster features the title 'HYPERGATEVR' and the tagline 'THE GATE TO ANOTHER WORLD'. The right poster shows a character in a red and black outfit with the text 'SCAN QR CODE TO UNLOCK THE GATE' and 'Plus, automatically receive 10% off your next single game purchase.' Both posters include the HyperGateVR logo.

The large window display features a central poster for HyperGateVR with the title 'HYPERGATEVR' and the tagline 'THE GATE TO ANOTHER WORLD'. Below the poster, the text 'VIRTUAL REALITY EXPERIENCES' is displayed. The window is flanked by white louvered shutters.

EXECUTIVE SUMMARY

Lee & Associates Los Angeles West, Inc. is pleased to present this generational asset for sale in the heart of Downtown Santa Monica. The legacy property was built in 1939 by the current family ownership. The building has been upgraded and retrofitted over the years, with the most recent electrical and HVAC upgrade happening in 2023. The property consists of a 2-story 10,000 SF building on approximately 5,000 SF parcel of land located in a high pedestrian traffic area, walking distance to all attractive businesses, shops, restaurants, and amenities that downtown Santa Monica offers.

The legacy property was originally home to one of the largest Arthur Murray Dance Studios, where history states that Fred Astaire and Ginger Rogers practiced on a regular basis. Over the years, the building's ground floor has been home to an Ice Cream Shop, Radio Shack and currently leased to HyperGate Virtual Reality. The second floor tenant Optimal Enhancement has occupied the space for over 40 years.

518 - 520 Santa Monica Blvd is being offered for sale for the very first time in its history. The proximity to premier Santa Monica amenities, restaurants, nightlife and the expo line gives an investor, owner/user an opportunity to purchase this long term value add opportunity. The large open floor plans on both floors with ceiling heights up to 14' give an array of options to either a single tenant or multi-tenant users. The building is accessible both from Santa Monica Blvd and the adjacent alley.

518 - 520 Santa Monica Blvd is an exciting opportunity to own a generational building in the heart of Santa Monica.



ADDRESS

518 - 520 Santa Monica Blvd
Santa Monica, CA 90401

PRICE

\$7,950,000
\$795/SF (Building)

BUILDING SF

± 10,000 SF

LOT SF

5,000 SF

STORIES

2

OCCUPANCY

100%

TENANCY

Multiple

YEAR BUILT

1939

STREET FRONTAGE

50 ft of Frontage along Santa
Monica Blvd.

PARKING

City Lot Adjacent

RENT ROLL

Address	Tenant	SF	Lease Type	Current		Projected Market Rent		Lease Exp.
				Rent/mo	PSF	Rent/mo	PSF	
518 SM Blvd	Optimal Enhancement	5,000	MN	\$6,500	\$1.30	\$12,500	\$2.50	MTM
520 SM Blvd	HyperGate VR	5,000	NNN	\$15,000	\$3.00	\$22,500	\$4.50	07/31/24
Total Rent				\$21,500		\$35,000		

YOGA

VIRTUAL REALITY EXPERIENCES

518 - 520
SANTA
MONICA
BLVD

SALE & LEASE
COMPARABLES



SALE COMPARABLES

	Property Address	Property Type	Building SF	Sale Price	Price/SF	Sale Date	Zoning
1	1452 2nd St Santa Monica, CA 90401	Retail Storefront	7,500 SF	\$5,805,500	\$774.07	Apr 4, 2023	C3
2	1344 4th St Santa Monica, CA 90401	Retail Storefront	11,500 SF	\$5,999,000	\$521.65	Feb 28, 2023	SMBSC2
3	525 Colorado Ave Santa Monica, CA 90401	Office	5,050 SF	\$4,900,000	\$970 SF	Jun 14, 2023	C3YY, Santa Monica

LEASE COMPARABLES

	Property Address	Close Date	SF	Rent	Lease Structure	Lease Term
1	502-514 Santa Monica Blvd Santa Monica, CA 90401	Mar 2023	1,816 SF	\$4.50		60 Months
2	920-934 Broadway Santa Monica, CA 90401	Mar 2023	1,630 SF	\$3.75	NNN	60 Months
3	1221 2nd St Santa Monica, CA 90401	Jul 2023	6,280 SF	\$3.25		36 Months
4	1344 4th St Santa Monica, CA 90401	Aug 2023	11,500 SF	\$4.95	NNN	120 Months
5	400-416 Broadway Santa Monica, CA 90401	Aug 2023	5,075 SF	\$4.95		36 Months
6	1505 4th St Santa Monica, CA 90401	Aug 2023	5,075 SF	\$4.75	NNN	36 Months
7	1335 4th St Santa Monica, CA 90401	Oct 2023	4,050 SF	\$3.95	MG	36 Months
8	602-616 Santa Monica Blvd Santa Monica, CA 90401	Nov 2023	1,520 SF	\$4.93	MG	36 Months
9	1410 2nd St Santa Monica, CA 90401	Dec 2023	6,783 SF	\$1.75	MG	36 Months

518 - 520
SANTA
MONICA
BLVD

PROPERTY
OVERVIEW

VIRTUAL REALITY

YOGA

518

520

HYPERGATEVR
THE GATE TO ANOTHER WORLD

HYPERGATEVR
THE GATE TO ANOTHER WORLD

Plus, automatically receive 10% off your next single game purchase.

HYPERGATEVR
THE GATE TO ANOTHER WORLD

VIRTUAL REALITY EXPERIENCES



AERIAL MAP



MALIBU

BRENTWOOD

PALISADES

Santa Monica Pier

Santa Monica Beach

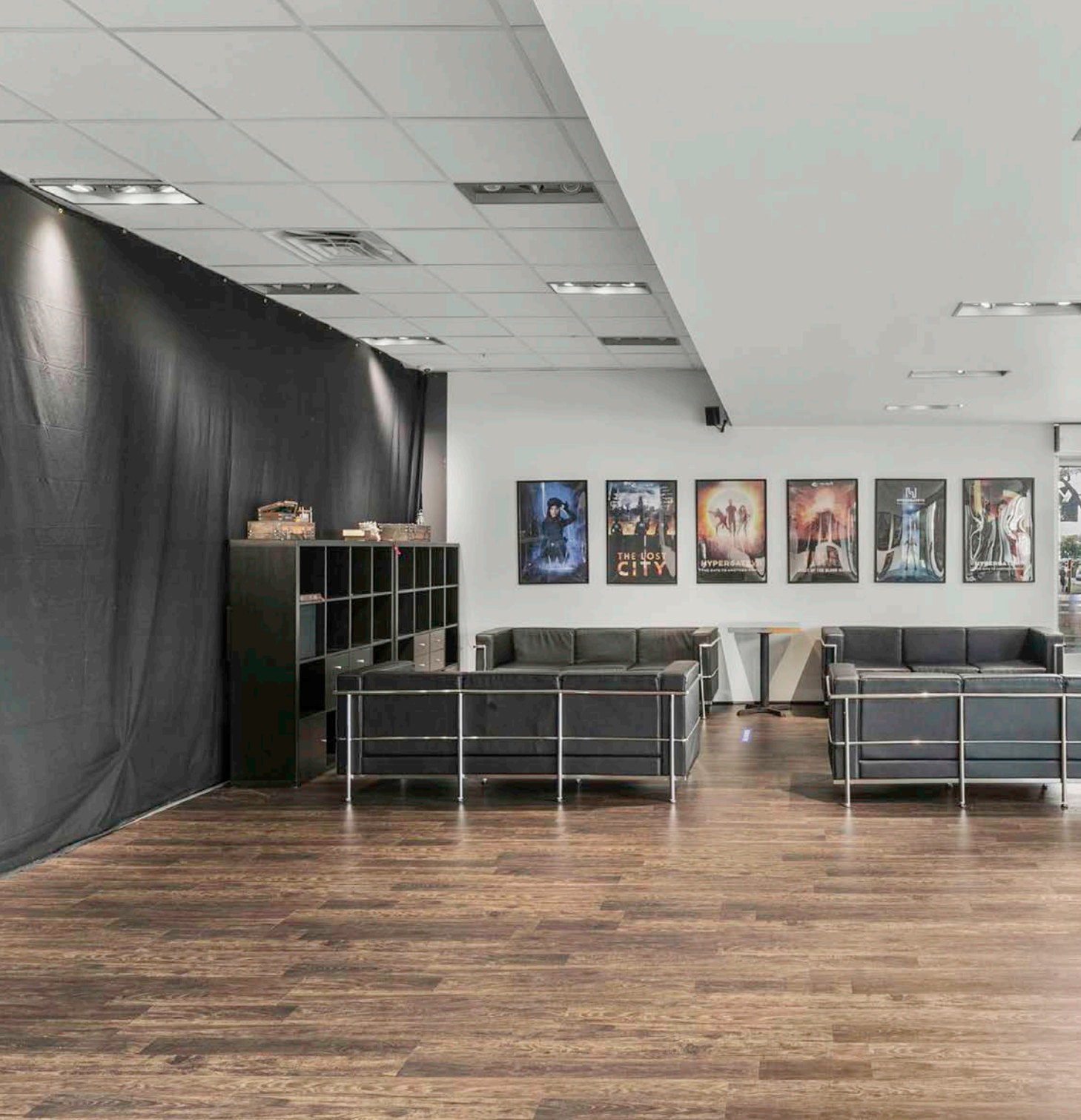
SUBJECT PROPERTY

Santa Monica Blvd

5th St

6th St

SANTA MONICA



SITE DETAIL

ADDRESS

518 - 520 Santa Monica Blvd
Santa Monica, CA 90401

BUILDING SIZE

1st Fl: ± 5,000 SF
2nd Fl: ± 5,000 SF

LOT AREA

± 5,000 SF

ASSESSOR PARCEL NUMBER

4291-019-001

ZONING

SMC3
Transit Adjacent (TA)

PROPERTY TYPE

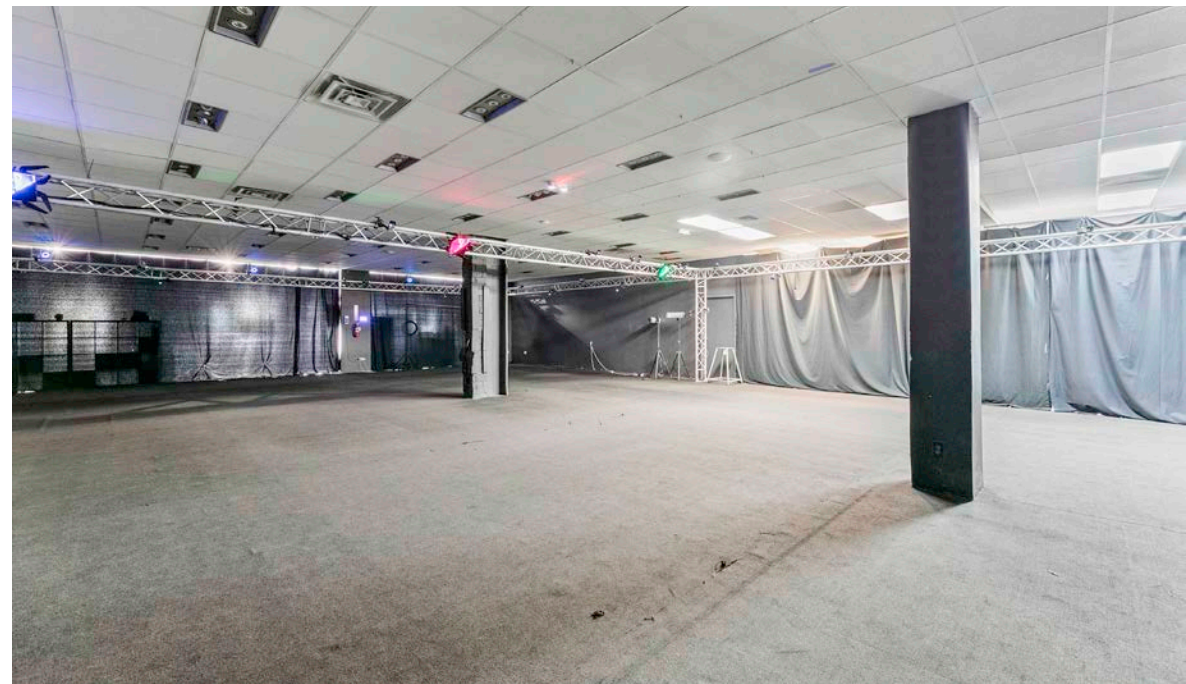
2 Story Freestanding Brick Building
Built in 1939

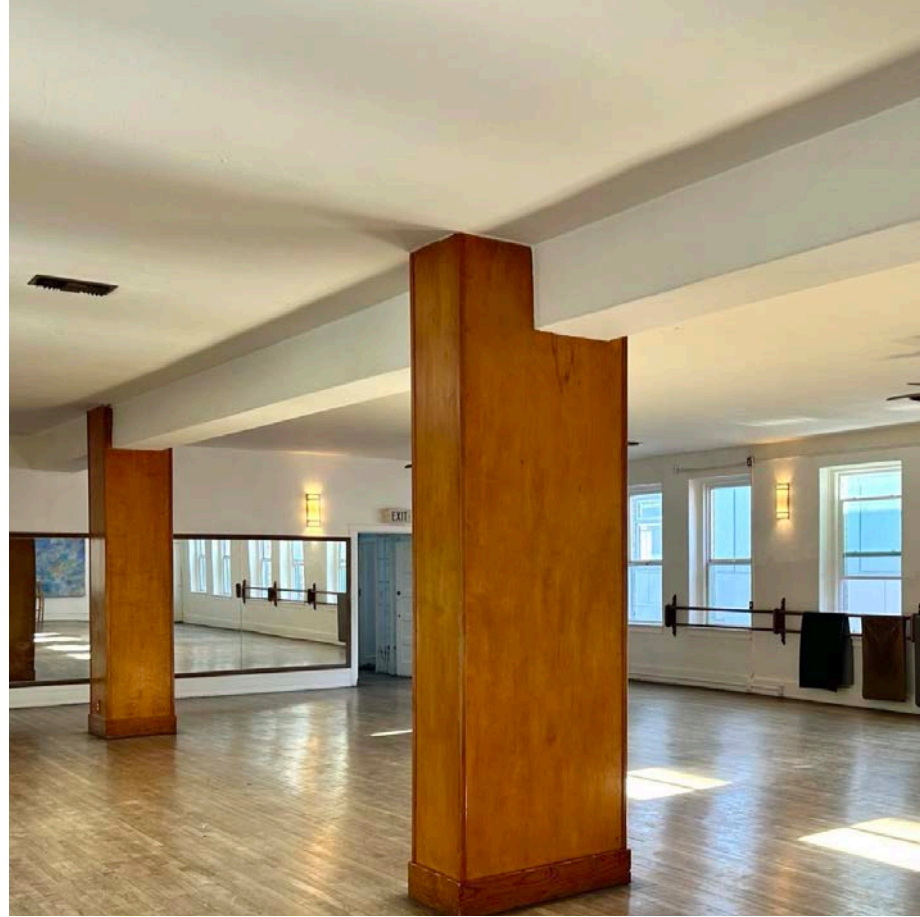
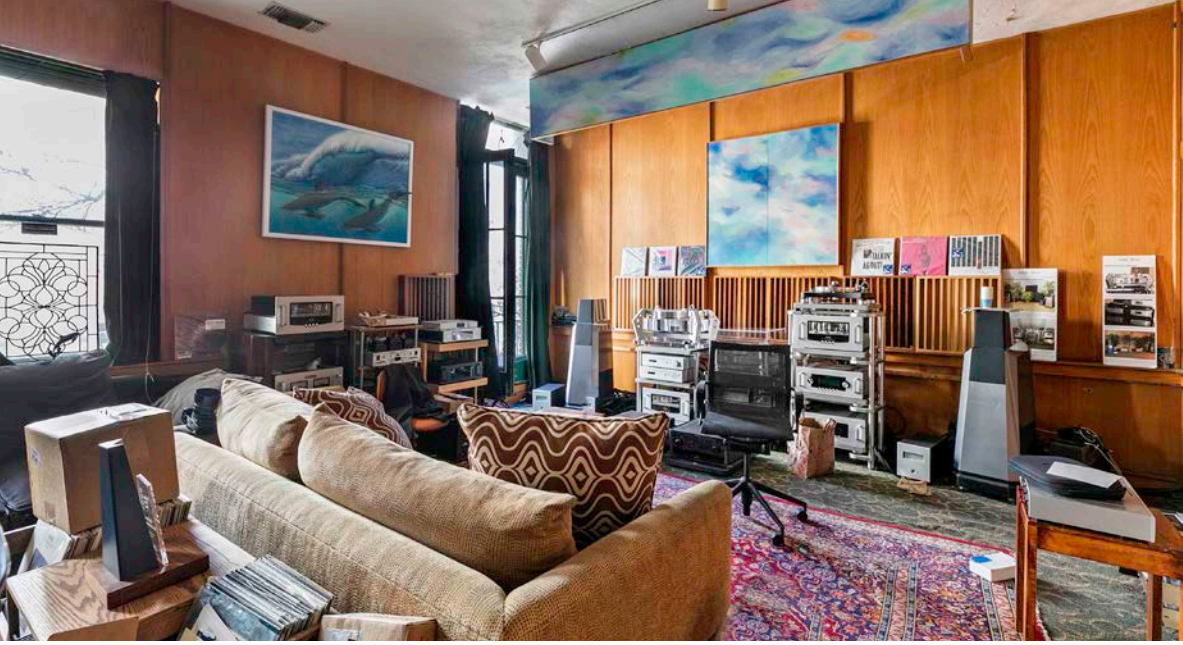
PROSPECTIVE USE

Retail, restaurant, Class-A office, creative employment, hospitality uses, multi-family housing, and community gathering spaces.

TRANSPORTATION EFFICIENCY

The location has a Walker's Paradise score of 94, is on major bus corridor, and a 5 minute walk to the new Expo line.



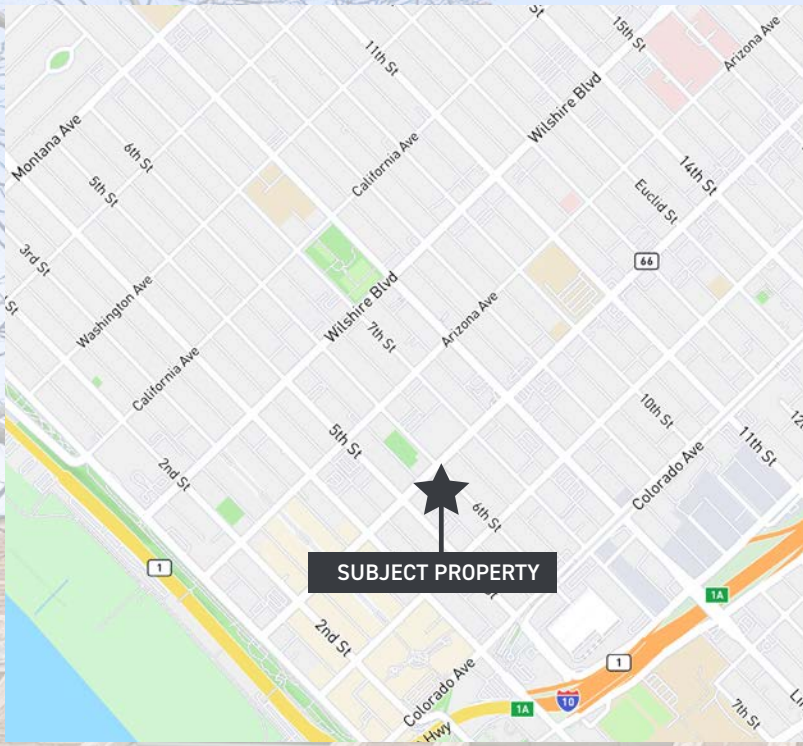


518 - 520
SANTA
MONICA
BLVD

**MARKET
OVERVIEW**



NEARBY AMENITIES



Philz Coffee



Soul Cycle



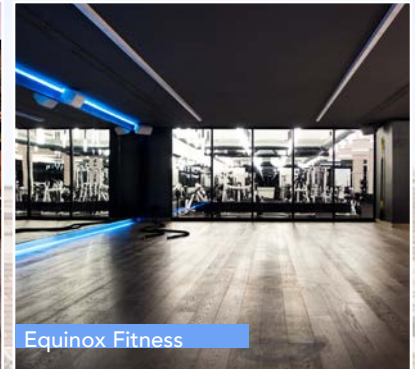
The Bungalow



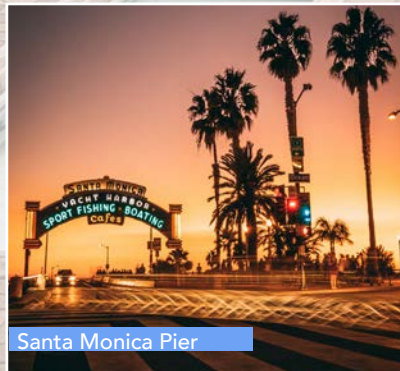
The Apple Store



3rd Street Promenade



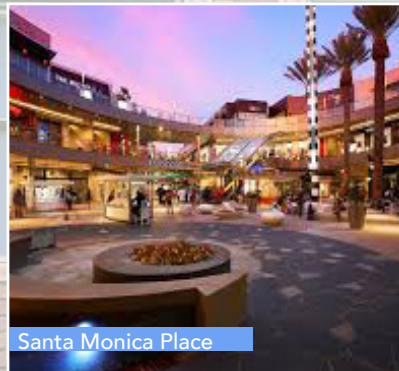
Equinox Fitness



Santa Monica Pier



Ivy at the Shore



Santa Monica Place



Cassia



Blue Plate Oysterette

An aerial photograph of Santa Monica, California, showing the iconic Santa Monica Pier extending into the ocean. The pier features a large Ferris wheel, roller coasters, and a building with a yellow roof. The beach is visible in the foreground, with waves breaking onto the shore. The sky is a mix of orange and blue, suggesting sunset or sunrise. The text is overlaid on the right side of the image.

SANTA MONICA MARKET OVERVIEW

Santa Monica's rental market demonstrates remarkable strength, as evidenced by data from Zillow. In 2022 alone, median rents in the city experienced a substantial 13% increase, rising from \$3,966 to \$4,457. This growth far outpaces the national average by 86% and surpasses the average rent in Los Angeles by 34%. The demand for larger living spaces is also evident, with 3-bedroom rentals starting at \$7,500 in 2023, a staggering 223% higher than the national average. These figures highlight the robustness of Santa Monica's rental market, reflecting its desirability as a residential destination and the limited supply of housing in this sought-after coastal city.

Santa Monica boasts an extraordinarily high quality of life with close proximity to upscale neighborhoods, abundant retail, beautiful beaches, the Santa Monica Mountains, top schools, a wealth of dining and entertainment options, and a vibrant economy. The city is conveniently located 14 miles from Downtown Los Angeles and 8 miles from Los Angeles International Airport. Santa Monica has a thriving, walkable downtown area and 3.5 miles of spectacular coastline. One of the most densely urbanized cities in California, Santa Monica has a land area of approximately 8.3 square miles and a population of 88,000 people via the US Census Bureau.

Santa Monica is an extremely prosperous city with a dynamic, well educated workforce. With an estimated population of approximately 88,000 people and a large daytime workforce, the city experiences substantial daily in-migration of workers contributing greatly to the economic vitality of the region. Average home value in Santa Monica is \$2.0 million, evidence of the fact that Santa Monica is one of the most prestigious addresses in all of California and a preferred location with numerous high-end housing options and an average household income in Santa Monica of \$151,000, well above the national and California averages.

Santa Monica City officials have recently made great strides to update their zoning on major corridors such as Santa Monica Boulevard in order to spur development. The strategy has worked with a construction boom.

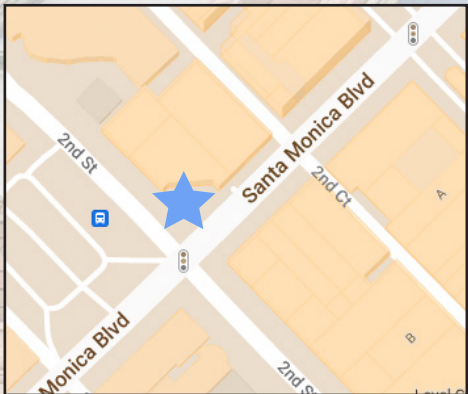
NEARBY DEVELOPMENTS

worthe



OCEAN AVENUE PROJECT

Located at the northeast corner of Ocean Avenue and Santa Monica Boulevard - directly across the street from Palisades Park. Plans call for the construction of multiple mid-rise and low-rise structures. World class design by Pritzker Prize winning architect Frank Gehry 120 hotel rooms with union workforce 100 total apartments including new affordable, replacement rent-controlled and market rate units Cultural Uses Campus incorporating two rehabilitated City-designated landmarks restaurants/shops including outdoor dining Public rooftop viewing terrace with 360-degree views of Santa Monica.

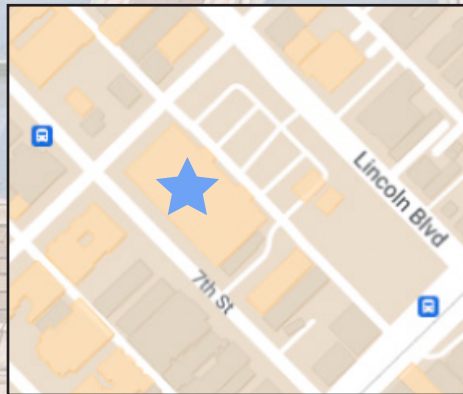


RELATED



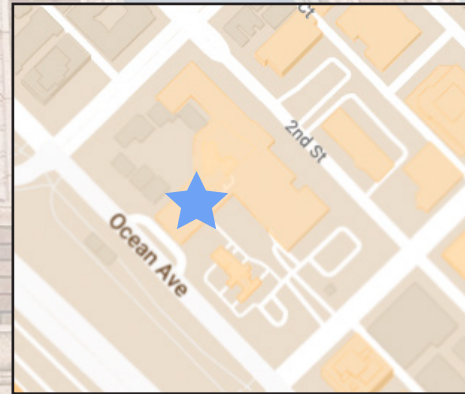
710 BROADWAY

710 Broadway will deliver 280 residential units, of which 30% will be reserved for low-income and middle-income households, a 53,500 square foot grocery store, and approximately 34,000 square feet of neighborhood-serving retail to Santa Monica. The new grocery store will be prominently located at the corner of Lincoln and Broadway and will continue to be operated by the Albertsons Companies. The additional community-serving retail will activate the corner of 7th and Broadway. 710 Broadway will be designed and built to a high level of sustainability and will be pedestrian friendly and transit oriented.



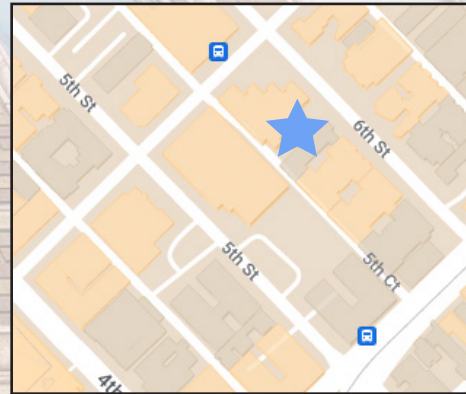
THE MIRAMAR HOTEL

The Miramar Santa Monica is located on a site prominent both for its location, where Wilshire Boulevard meets the Pacific Ocean, and its central place in Santa Monica's rich cultural history. The new plan aims to rectify this and reestablish the Miramar Santa Monica as a world-class destination ensuring a beloved community asset for the next 100+ years. When complete, the Miramar will be a new landmark and a spectacular addition to Downtown Santa Monica.



"THE PARK" BROADWAY

Joint venture between Witkoff and New Valley, LLC, replaced a shuttered Fred Segal store at 5th Street and Broadway with a new seven-story edifice. Koning Eizenberg Architecture design, which includes multiple courtyards at street level that provide open space for use by commercial and residential tenants. The project consists of a seven story building featuring 249 apartments above 55,000 square feet of ground-floor retail space and a basement parking garage. The building includes a mix of studio, one-, two-, and three-bedroom floor plans, with monthly rents starting at \$4,350.



CONTACTS

DUNCAN LEMMON

AGT DRE 00857008

dlemmon@leewestla.com

310 899 2733 / 310 701 3975

SPENCER HORAK

AGT DRE 01921906

shorak@leewestla.com

310 899 2728

Lee & Associates

Los Angeles West, Inc.

DRE 01222000

1508 17TH STREET, SANTA MONICA, CA 90404 | LEEWESTLA.COM



THE INFORMATION CONTAINED IN THE FOLLOWING MARKETING BROCHURE IS PROPRIETARY AND STRICTLY CONFIDENTIAL. IT IS INTENDED TO BE REVIEWED ONLY BY THE PARTY RECEIVING IT FROM LEE & ASSOCIATES - LOS ANGELES WEST INC. AND SHOULD NOT BE MADE AVAILABLE TO ANY OTHER PERSON OR ENTITY WITHOUT THE WRITTEN CONSENT OF LEE & ASSOCIATES - LOS ANGELES WEST INC.

THIS MARKETING BROCHURE HAS BEEN PREPARED TO PROVIDE SUMMARY, UNVERIFIED INFORMATION TO PROSPECTIVE PURCHASERS, AND TO ESTABLISH ONLY A PRELIMINARY LEVEL OF INTEREST IN THE SUBJECT PROPERTY. THE INFORMATION CONTAINED HEREIN IS NOT A SUBSTITUTE FOR A THOROUGH DUE DILIGENCE INVESTIGATION. LEE & ASSOCIATES - LOS ANGELES WEST INC. HAS NOT MADE ANY INVESTIGATION, AND MAKES NO WARRANTY OR REPRESENTATION, WITH RESPECT TO THE INCOME OR EXPENSES FOR THE SUBJECT PROPERTY, THE FUTURE PROJECTED FINANCIAL PERFORMANCE OF THE PROPERTY, THE SIZE AND SQUARE FOOTAGE OF THE PROPERTY AND IMPROVEMENTS, THE PRESENCE OR ABSENCE OF CONTAMINATING SUBSTANCES, PCB'S OR ASBESTOS, THE COMPLIANCE WITH STATE AND FEDERAL REGULATIONS, THE PHYSICAL CONDITION OF THE IMPROVEMENTS THEREON, OR THE FINANCIAL CONDITION OR BUSINESS PROSPECTS OF ANY TENANT, OR ANY TENANT'S PLANS OR INTENTIONS TO CONTINUE ITS OCCUPANCY OF THE SUBJECT PROPERTY. THE INFORMATION CONTAINED IN THIS MARKETING BROCHURE HAS BEEN OBTAINED FROM SOURCES WE BELIEVE TO BE RELIABLE; HOWEVER, LEE & ASSOCIATES - LOS ANGELES WEST INC. HAS NOT VERIFIED, AND WILL NOT VERIFY, ANY OF THE INFORMATION CONTAINED HEREIN, NOR HAS LEE & ASSOCIATES - LOS ANGELES WEST INC. CONDUCTED ANY INVESTIGATION REGARDING THESE MATTERS AND MAKES NO WARRANTY OR REPRESENTATION WHATSOEVER REGARDING THE ACCURACY OR COMPLETENESS OF THE INFORMATION PROVIDED. ALL POTENTIAL BUYERS MUST TAKE APPROPRIATE MEASURES TO VERIFY ALL OF THE INFORMATION SET FORTH HEREIN.

THIS INFORMATION HAS BEEN SECURED FROM SOURCES WE BELIEVE TO BE RELIABLE. WE MAKE NO REPRESENTATIONS OR WARRANTIES, EXPRESSED OR IMPLIED, AS TO THE ACCURACY OF THE INFORMATION. REFERENCES TO SQUARE FOOTAGE OR AGE ARE APPROXIMATE. RECIPIENT OF THIS REPORT MUST VERIFY THE INFORMATION AND BEARS ALL RISK FOR ANY INACCURACIES.