

# GERRY BUILDING

910 S LOS ANGELES ST | LOS ANGELES 90015

1,100 - 12,500 SF OFFICES IN HISTORIC CORE

*The*  
**GERRY BUILDING**  
FASHION SINCE 1946



A DIVISION OF



LEE &  
ASSOCIATES

## PROPERTY INFORMATION

The  
**GERRY BUILDING**  
FASHION SINCE 1936  
WWW.GERRYBUILDING.COM



### AVAILABLE SUITES

Floors 2 to 9: 1,100 SF - 12,000 SF



RENT: \$1.88 FULL SERVICE



ROOFTOP PATIO ACCESS



### CONTACTS

**Aleks Trifunovic, SIOR**

310.899.2721

[atrifunovic@leewestla.com](mailto:atrifunovic@leewestla.com)

BKR DRE 01363109

**Adam Levine**

310.899.2703

[alevine@leewestla.com](mailto:alevine@leewestla.com)

ACT DRE 02104830

**Tommy Isola**

310.899.2709

[tisola@leewestla.com](mailto:tisola@leewestla.com)

ACT DRE 01974024

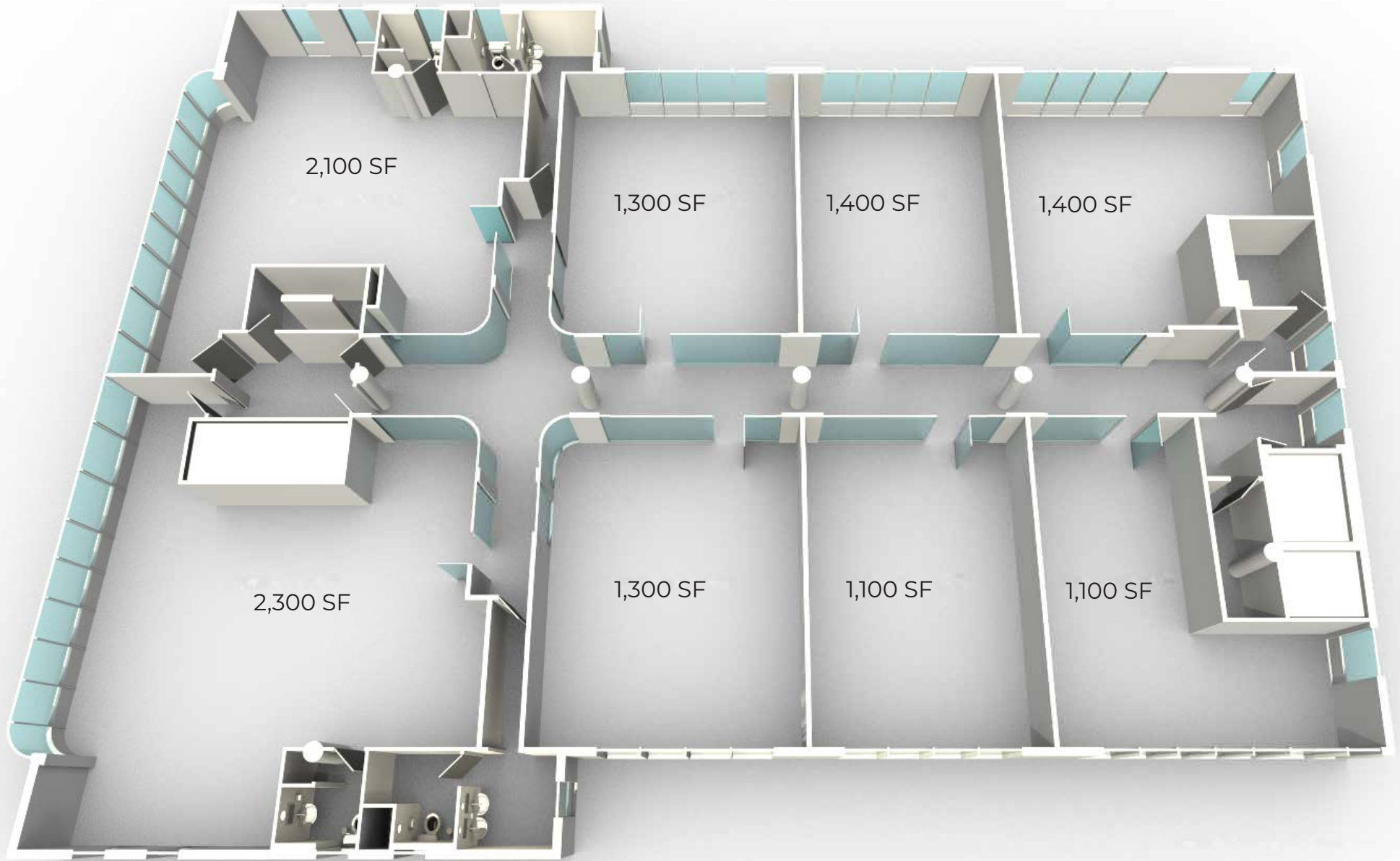
**Andrew Doan**

310.899.2736

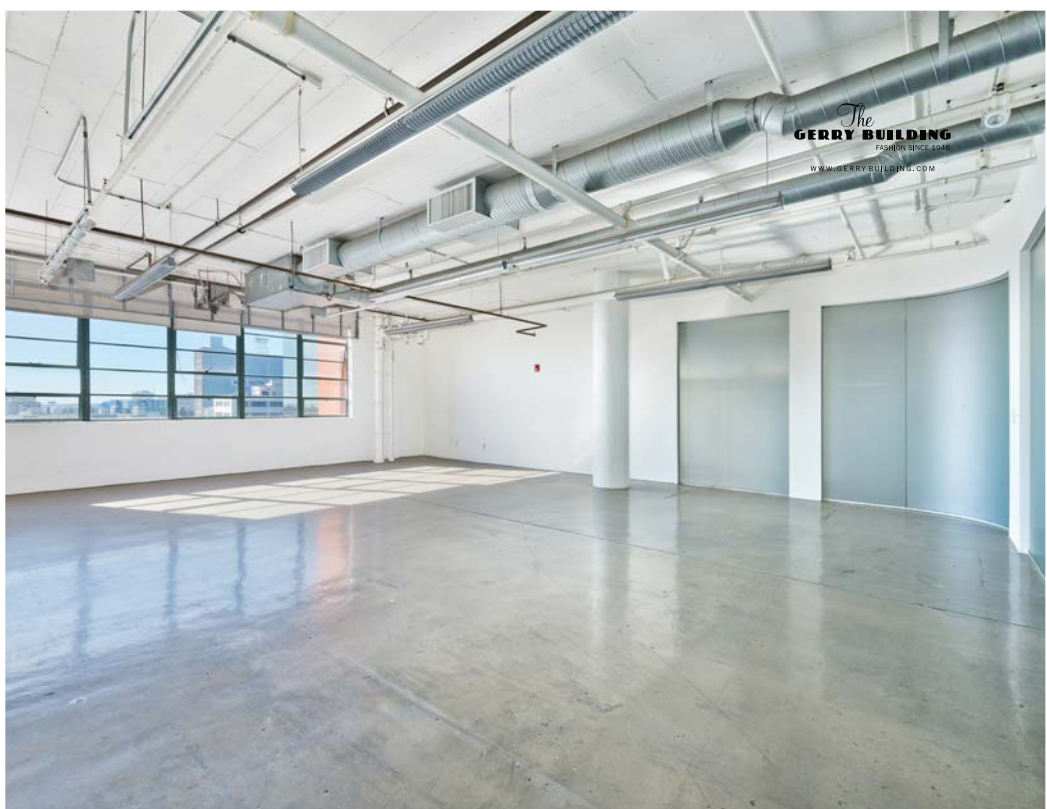
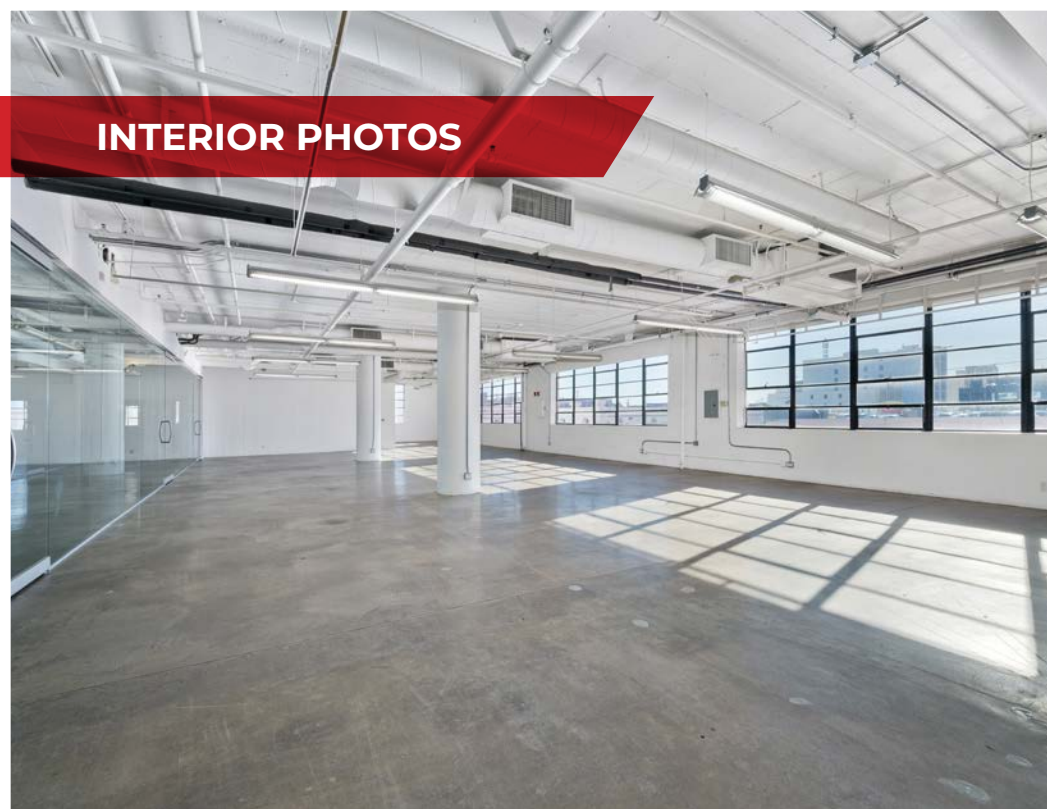
[adoanleewestla.com](mailto:adoanleewestla.com)

ACT DRE 02070848

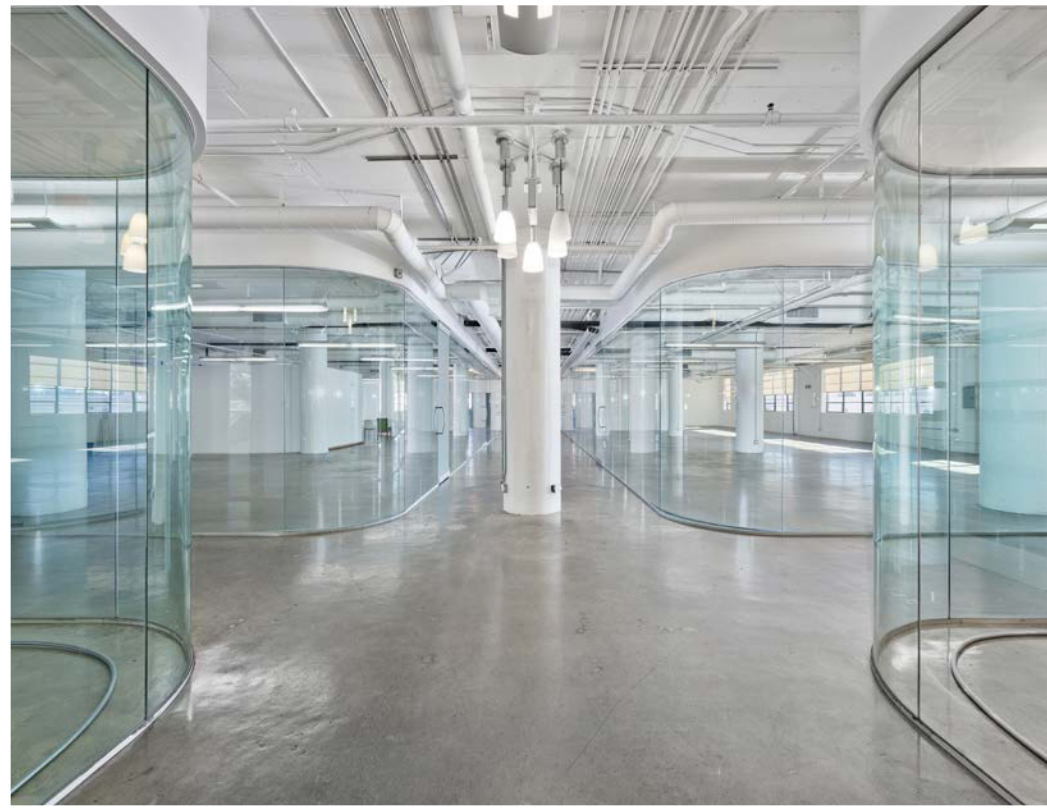
# FLOORS 2 THROUGH 9



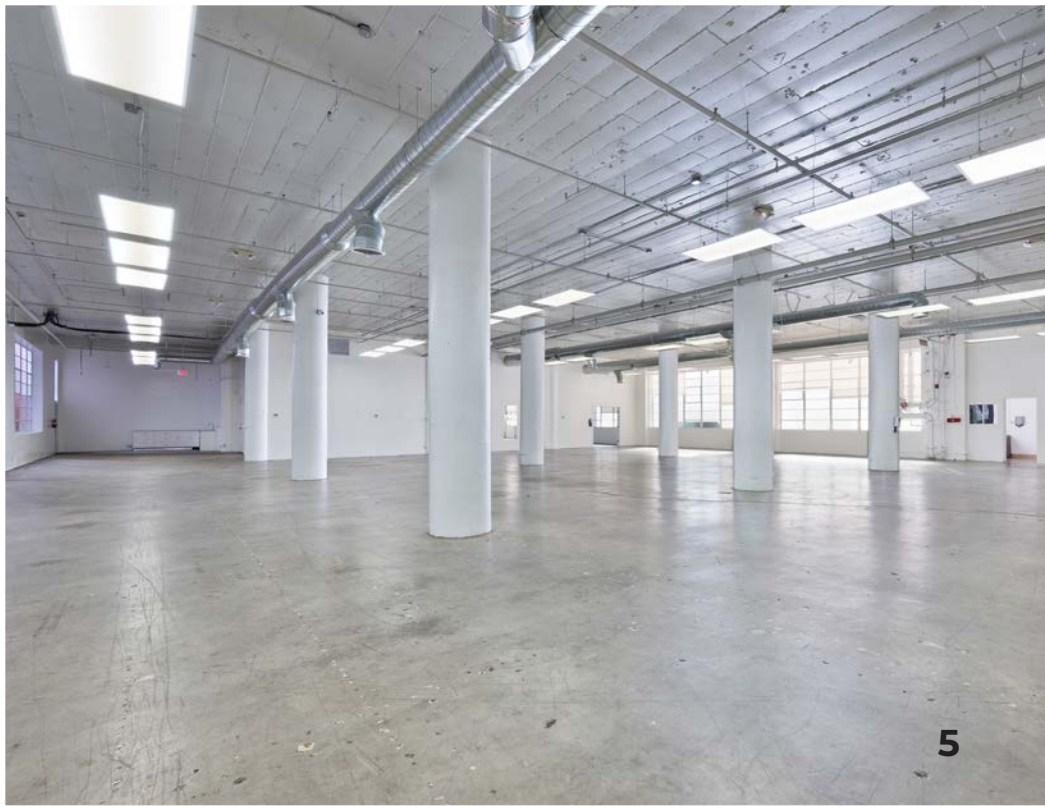
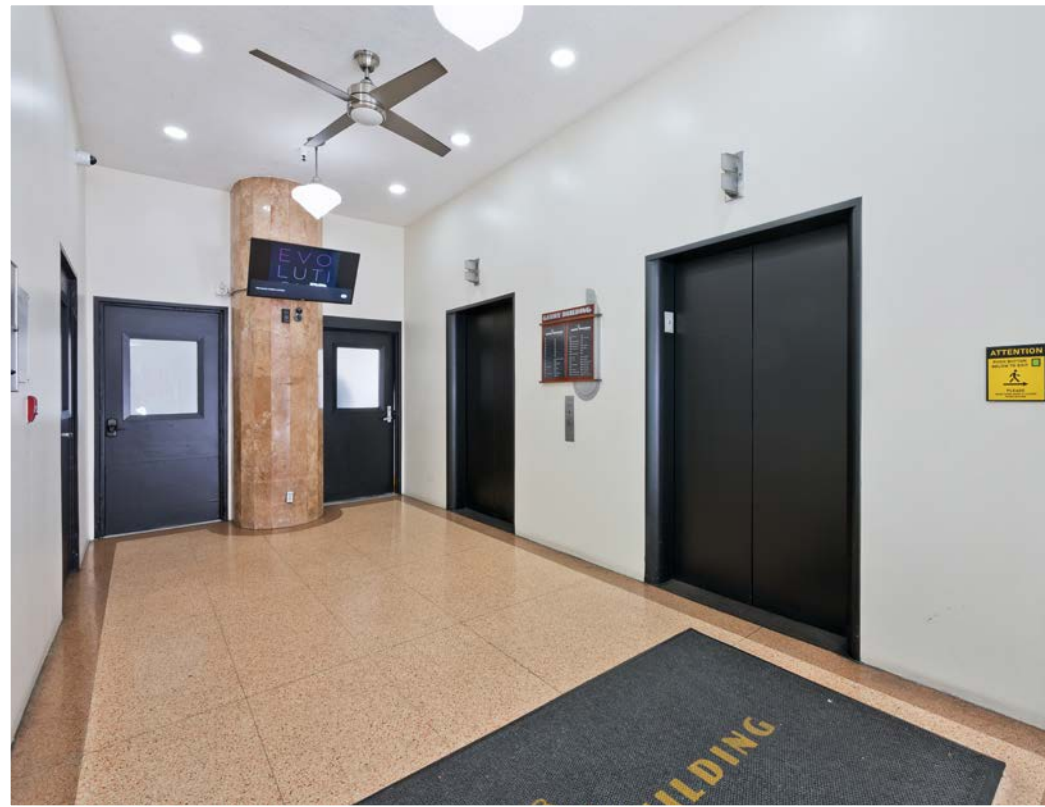
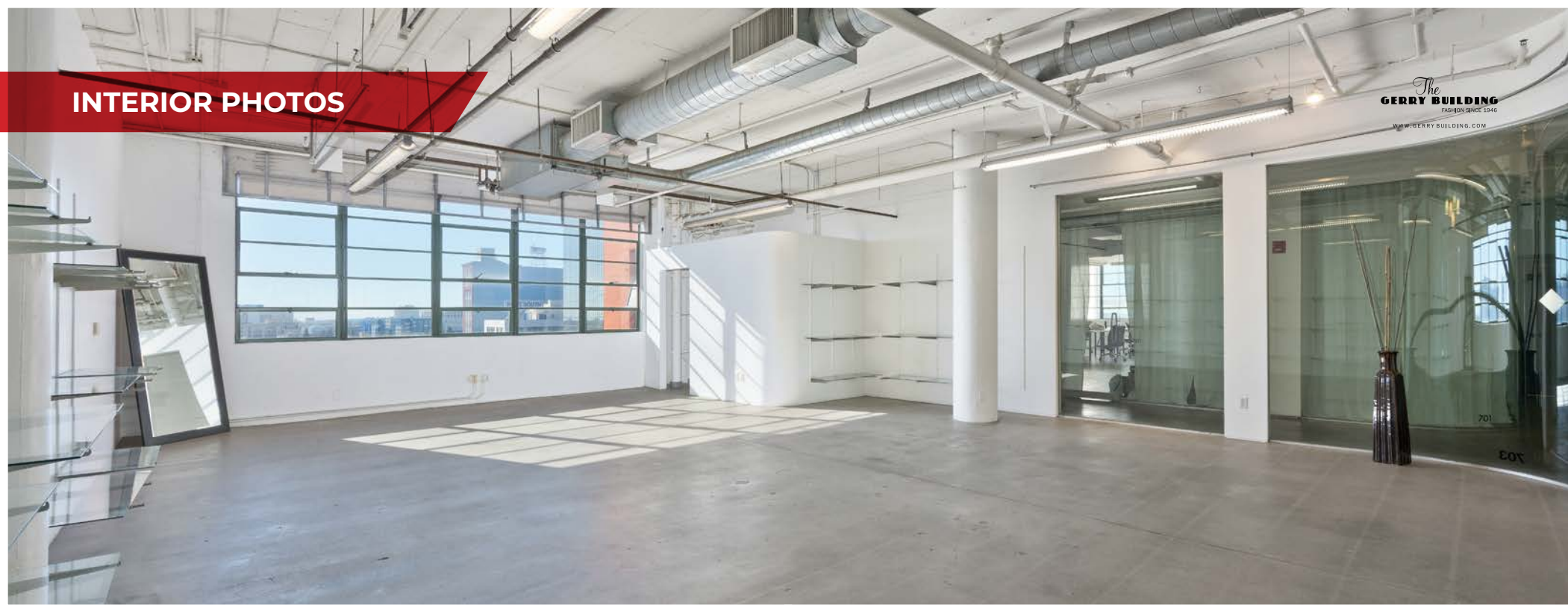
**INTERIOR PHOTOS**



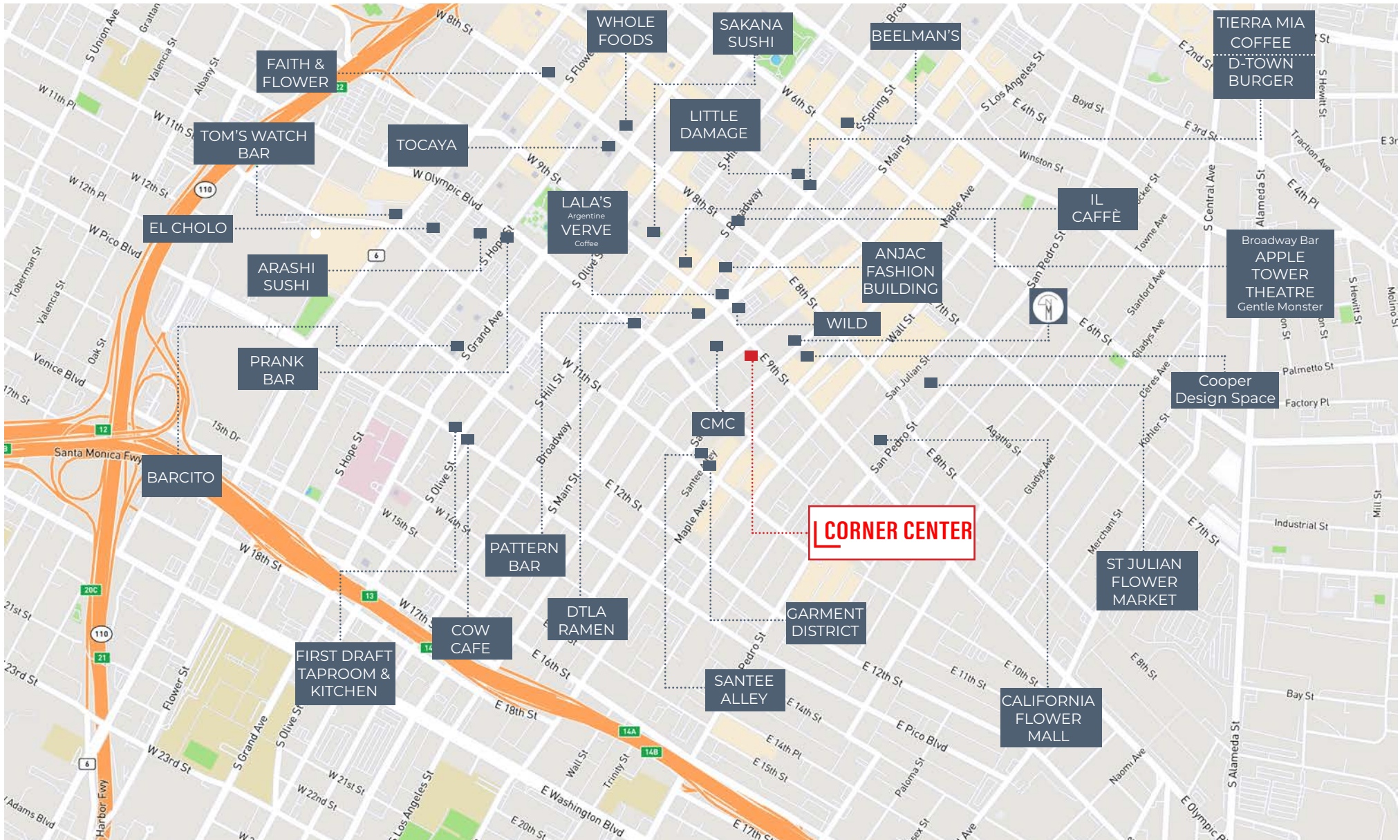
*The*  
**GERRY BUILDING**  
FASHION SINCE 1946  
[WWW.GERRYBUILDING.COM](http://WWW.GERRYBUILDING.COM)



# INTERIOR PHOTOS



# Amenities Map





**Aleks Trifunovic, SIOR**

President  
310.899.2721  
atrifunovic@leewestla.com  
BKR DRE 01363109

**Tommy Isola**

Principal  
310.899.2709  
tisola@leewestla.com  
AGT DRE 01974024

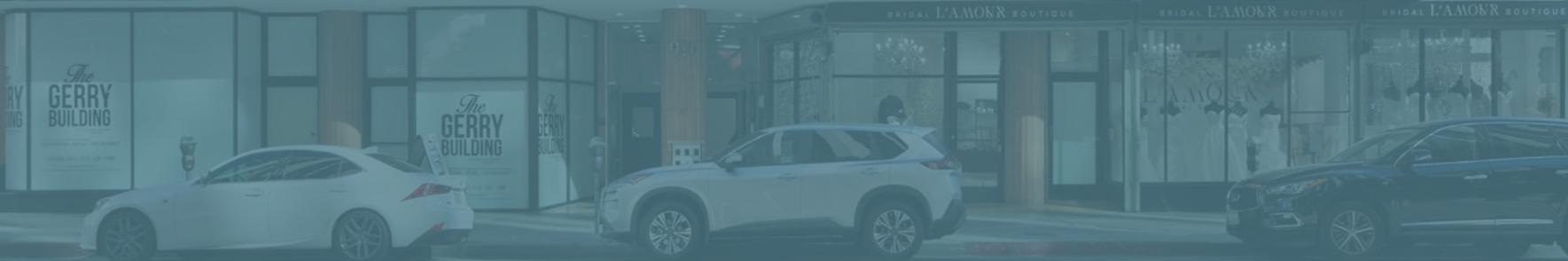
**Adam Levine**

Associate  
310.899.2703  
alevine@leewestla.com  
AGT DRE 02104830

**Andrew Doan**

Associate  
310.899.2736  
adoanleewestla.com  
AGT DRE 02070848

**GERRY BUILDING**



Lee & Associates Los Angeles West, Inc.  
1508 17th Street, Santa Monica, CA  
310.899.2700 | [www.leewestla.com](http://www.leewestla.com) | DRE 01222000

No warranty or representation is made to the accuracy of the foregoing information.