

6601 HOLLYWOOD BLVD

LOS ANGELES, CA 90028



NEW OFFICE LOCATED IN THE HEART OF HOLLYWOOD

6601 HOLLYWOOD BLVD

LOS ANGELES, CA 90028

PREMISES ± 1,365 SF

RENT \$1.95/SF, FSG

TERM Through January 31, 2027

OCCUPANCY Immediate

PARKING Adjacent lot across the street at \$150/car

FEATURES

- Light and airy, and hard wood floors
- Walking distance to Blue Line, Rail Line, El Capitan Theater, and TCL Chinese Theater

CONTACT Douglas R. Marshall, SIOR
310.899.2745
dmarshall@leewestla.com
BRE 00869275

Ian Ameche
310.899.2748
iameche@leewestla.com
BRE 01976053

Alex Rivera
310.899.2742
arivera@leewestla.com
BRE 01328712



1508 17th Street, Santa Monica, CA | 310.899.2700
WWW.LEEWESTLA.COM | BRE 01222000

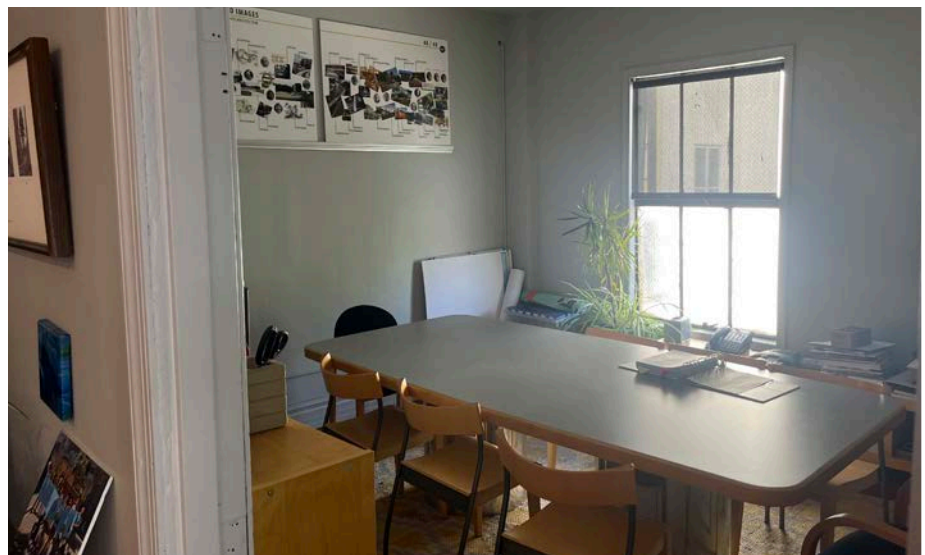
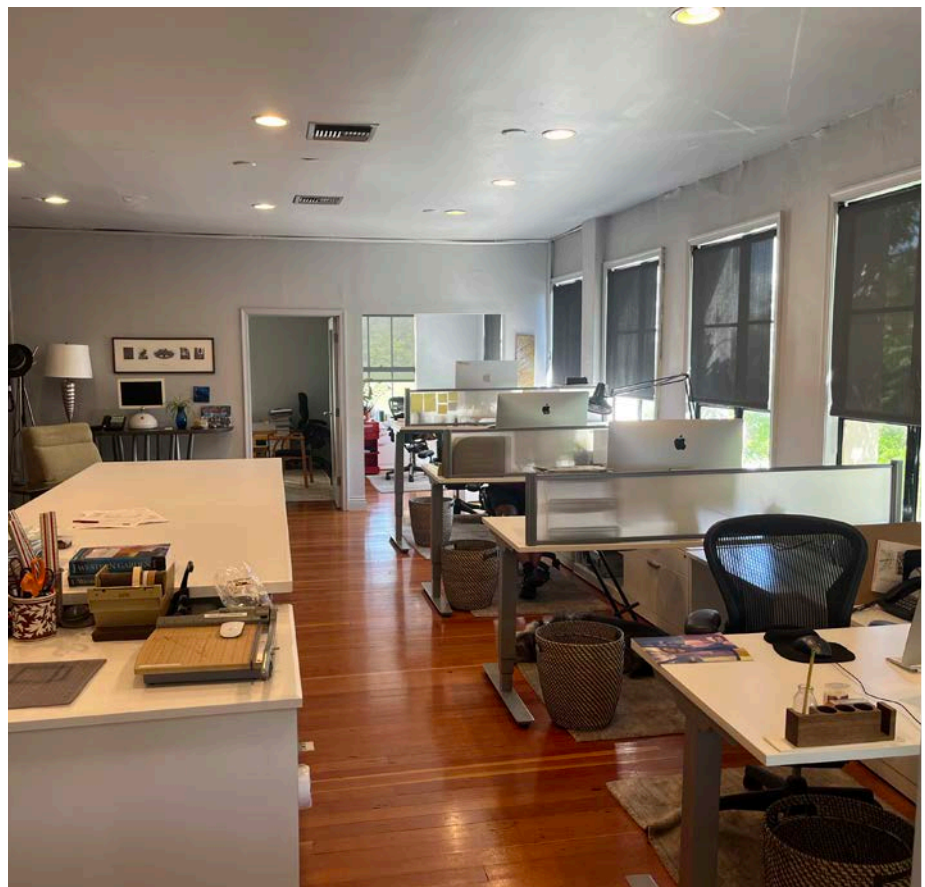
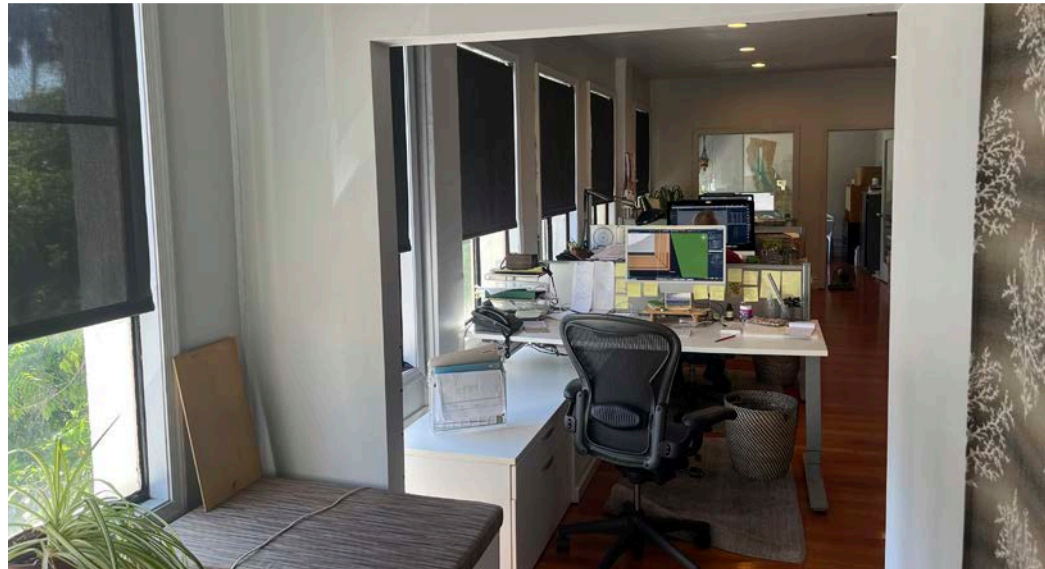
No warranty or representation is made to the accuracy of the foregoing information. Terms of sale or lease are subject to change or withdrawal without notice.



6601 HOLLYWOOD BLVD | FEATURES

6601 HOLLYWOOD BLVD

LOS ANGELES, CA 90028

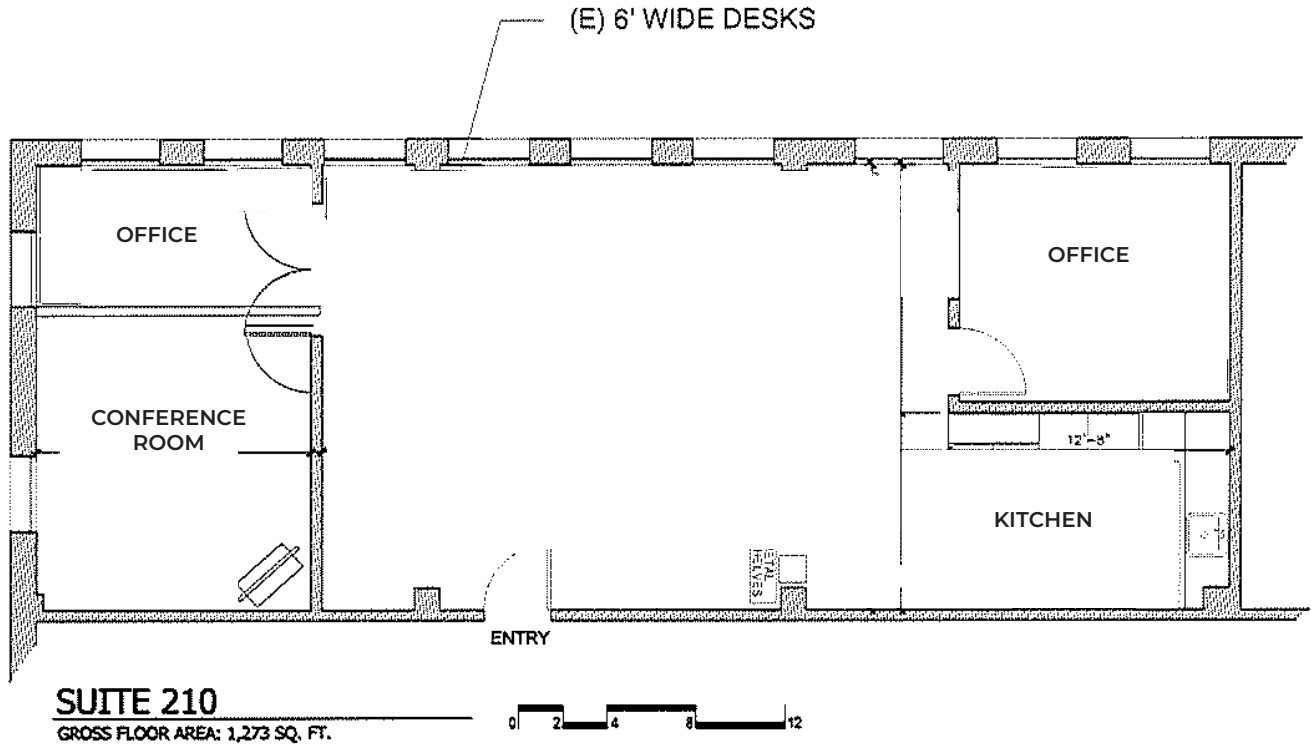


6601 HOLLYWOOD BLVD | INTERIOR PHOTOS

6601 HOLLYWOOD BLVD

LOS ANGELES, CA 90028

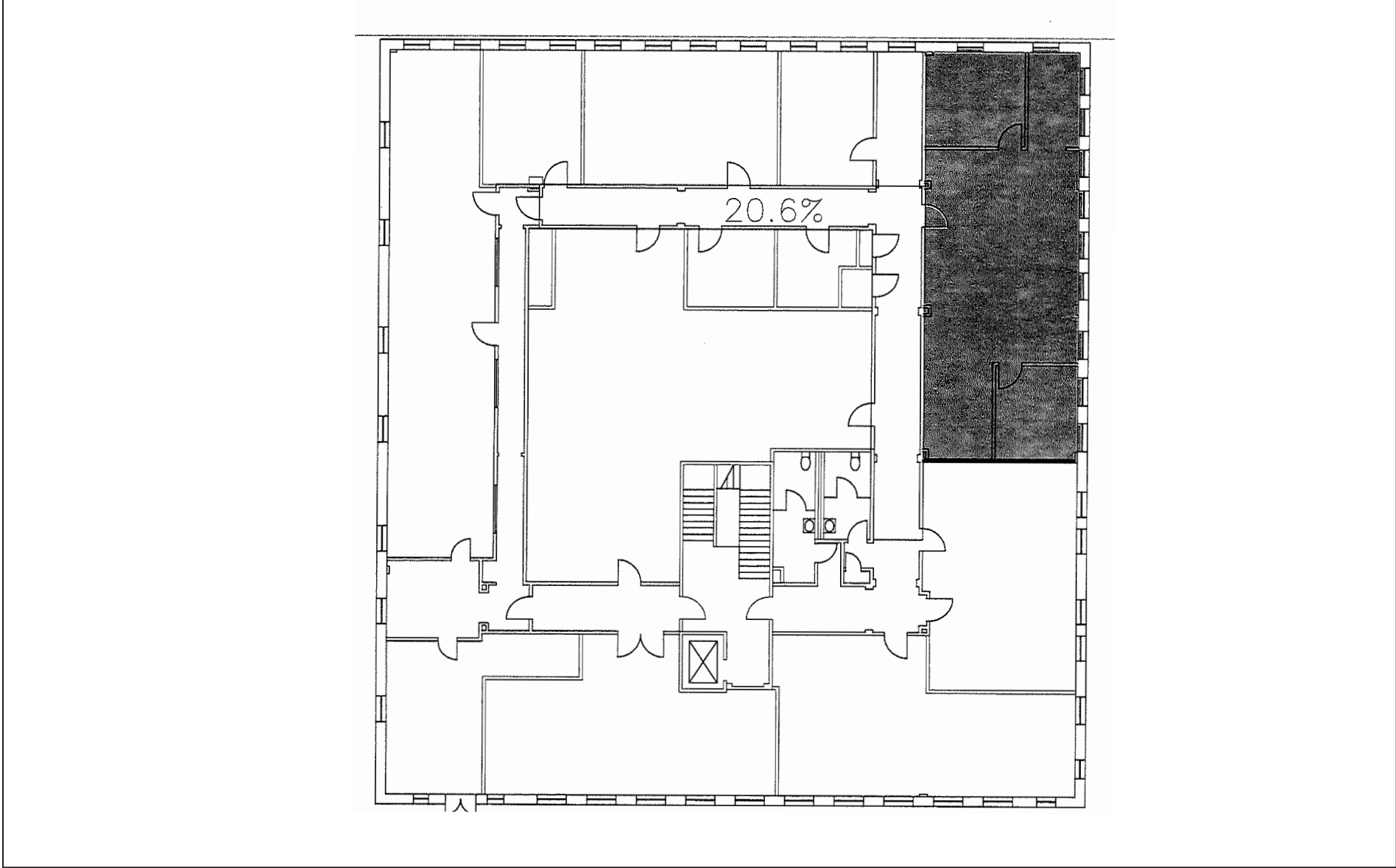
6601 HOLLYWOOD BLVD | FLOOR PLAN



A DIVISION OF
LEE & ASSOCIATES

6601 HOLLYWOOD BLVD

LOS ANGELES, CA 90028



6601 HOLLYWOOD BLVD | FLOOR PLAN

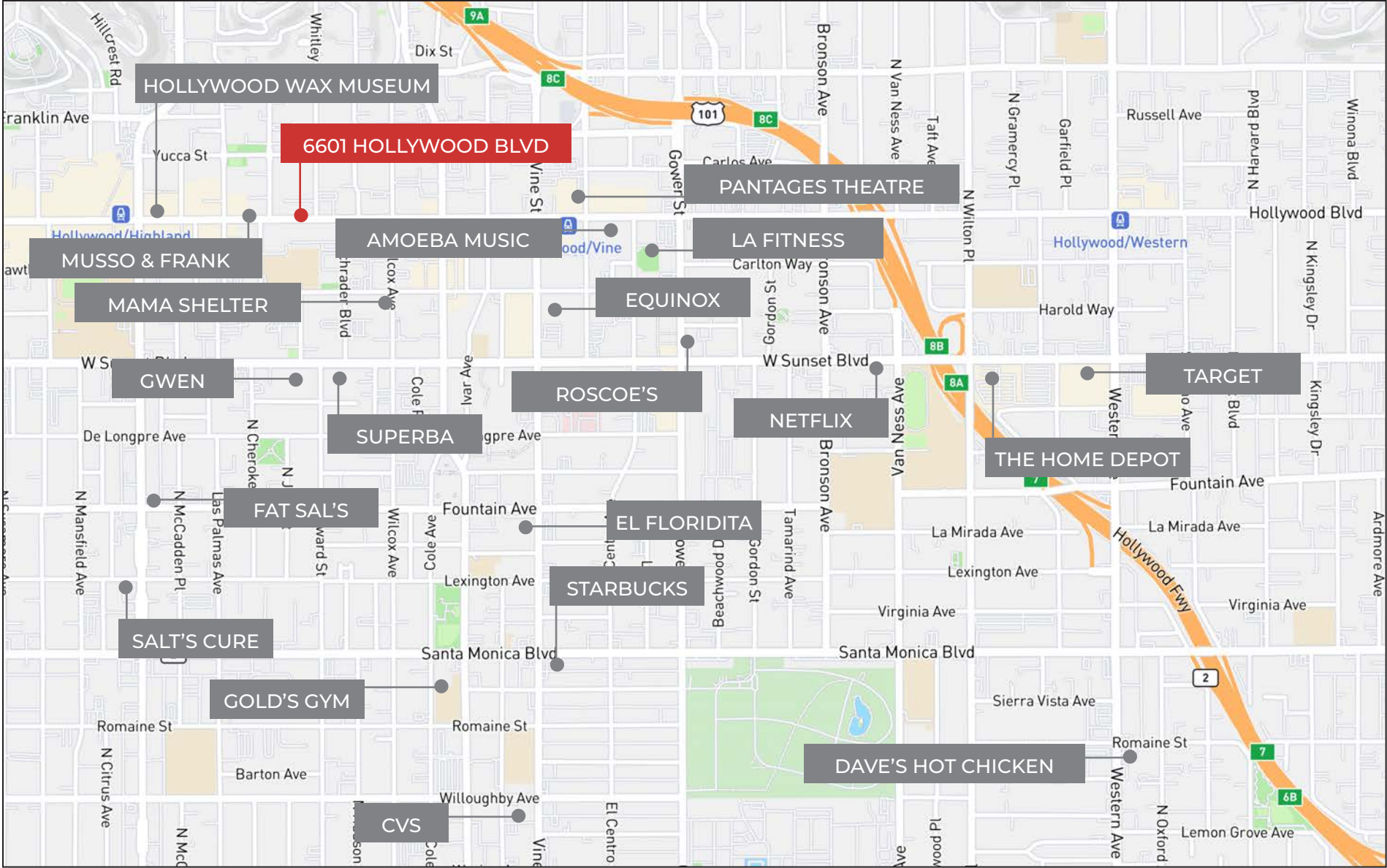


A DIVISION OF



6601 HOLLYWOOD BLVD

LOS ANGELES, CA 90028



6601 HOLLYWOOD BLVD | NEARBY AMENITIES

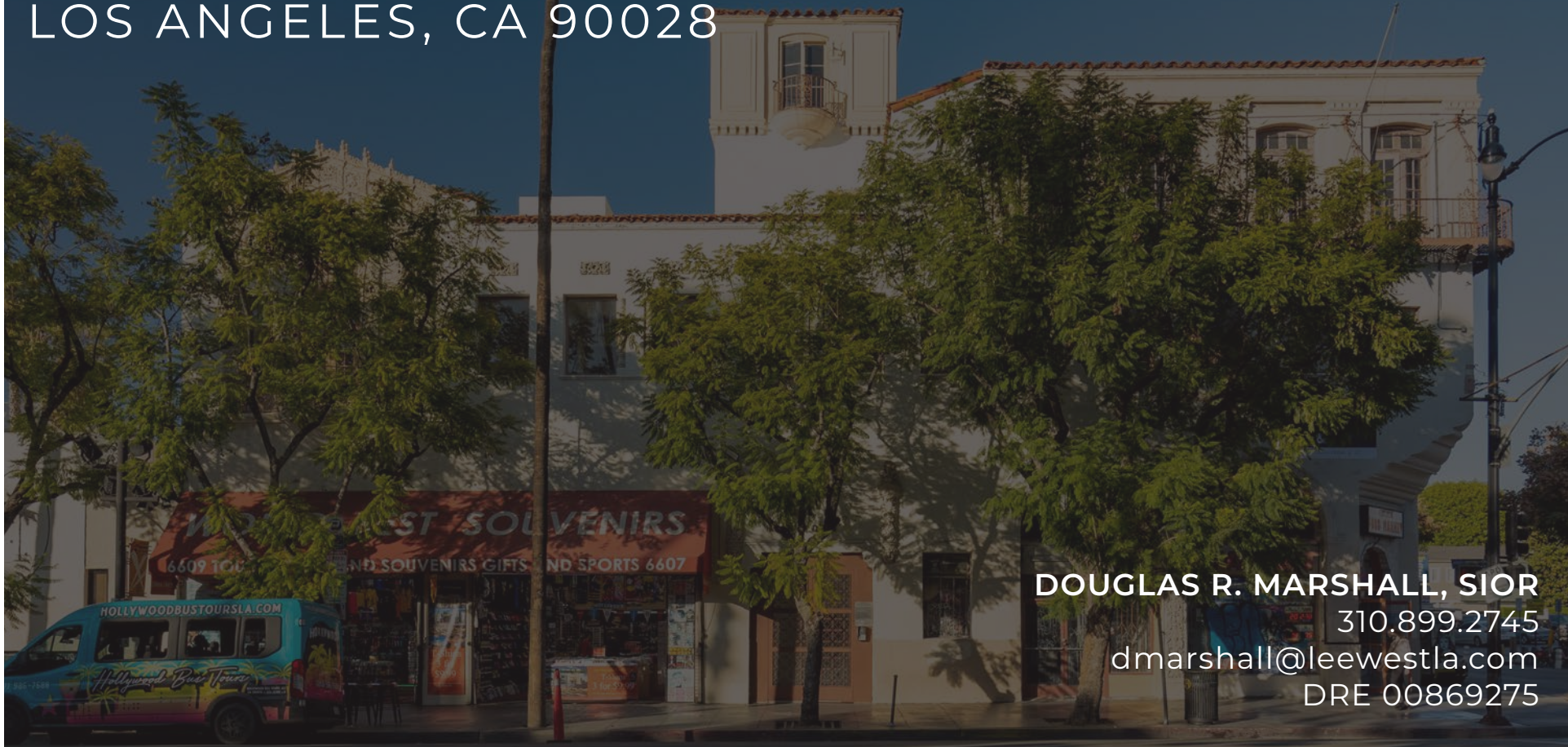


A DIVISION OF



6601 HOLLYWOOD BLVD

LOS ANGELES, CA 90028



DOUGLAS R. MARSHALL, SIOR
310.899.2745
dmarshall@leewestla.com
DRE 00869275

IAN AMECHE
310.899.2748
iameche@leewestla.com
DRE 01976053

ALEX RIVERA
310.899.2742
arivera@leewestla.com
AGT DRE 01328712

6601 HOLLYWOOD BLVD | CONTACTS